

100w photovoltaic panels connected in parallel





Overview

Here's how to calculate the power output of your solar array, regardless of how you're wiring your panels together -- and regardless of whether or not the panels are identical.

Here's a quick overview of how to wire solar panels in series and parallel. For more in-depth instructions, check out our full tutorial. Full tutorial:.

Should solar panels be connected in series or parallel?

As for a system that using the MPPT charge controller, there is no preference for solar panels to be connected in series, parallel, or series-parallel only if the voltage value of the solar panel system is higher than the battery bank voltage. Solar Connector In-line Fuse:.

How do you wire solar panels in parallel?

For instance, if you have three solar panels, you'll need a pair of 3-to-1 MC4 branch connectors. To wire four solar panels in parallel, use a pair of 4-to-1 MC4 branch connectors. Now, to wire my two solar panels in parallel, the initial step was connecting the fuses to the positive leads of the solar panels. Read more about fusing solar panels.

Should 12V solar panels be wired in series or parallel?

12V solar panels can be wired in either series or parallel, depending on your system requirements. For higher voltage systems, wire them in series to increase the overall voltage. For increased current and better performance under shaded conditions, wire them in parallel.

How much power does a 100W solar panel have?

Just how much less - is relative to dissimilarity in specified currents. Additionally if you connect collectively a 60W solar panels to a 100W panel in parallel, the absolute associated power is likely to be 160W, assuming that the two solar panels are of matching voltage.

What is the difference between series and parallel solar panels?



Wiring solar panels in series sums the voltages, but the current remains the same. Wiring solar panels in parallel sums the currents, but the voltage remains the same. Note: You can calculate the power output of your series and parallel wiring configurations with our solar panel series and parallel calculator.

Does connecting solar panels in parallel affect wattage?

No. Connecting solar panels in serial or parallel does not impact how much wattage they produce in laboratory conditions. Connecting solar panels in parallel increases amperage and keeps voltage constant. Series connections produce higher voltage while maintaining amperage, regardless of how many panels you use.



100w photovoltaic panels connected in parallel



Solar String Expansion. Panels Connection Parallel vs Series

Connecting Different Spec Solar Panels in Parallel. Mixing panels with different currents but equal voltages can work well when wiring them in parallel. When connected in ...

How to Wire Solar Panels in Series & Parallel

Wiring solar panels in parallel sums the currents, but the voltage remains the same. Note: You can calculate the power output of your series and parallel wiring ...



Parallel Connected Solar Panels For Increased Current

If the parallel connected pv panels are of different wattages and ratings, then both the voltage and current are limited to the lowest values, reducing the efficiency of the parallel connected array even at maximum irradiance. Thanks for the ...

Schematics: Wiring Solar Panels and Batteries in Series and Parallel

For example, a 100W solar panel can make (under standard test conditions, STC) 18 volts (V) and 5.5 amps (A). A 1200Wh battery is rated by both the 12V and 100Ah capacity. When ...



[Solar Panel Series and Parallel Calculator](#)

The Solar Panel Series and Parallel Calculator will display the maximum total power output from all panels. I have 40amp mppt with 4 100 watt panels Connected to 4 ...



Wiring Up Solar Panels: Series, Parallel, or Series-Parallel

The next method of wiring solar panels is in parallel. In this configuration, all the positive ends are connected together, and all the negative ends are connected, maintaining ...



How to Connect Solar Panels: Series, Parallel, and ...

The amperage values from the strings would be added depending on how many panel strings are connected in parallel. E.g. 4x12V panels connected in 2S/2P(2 parallel strings of 2 series groups), voltage ...





Should I connect my Solar Panels in Series or Parallel?

So when connecting Solar Panels in series always try to keep the electrical properties of the solar panels identical to get the full benefit of the solar array. Now lets look at ...



How to Wire Two or More Solar Panels in Parallel

In this case, it is possible to wire the two 6V panels in series and then wire the resultant array in parallel to the 12V panel. However, the latter type of connection is at the expense of efficiency. ...

Solar Panels: Connected In Parallel Or In Series

Another problem is the power problem. For solar panels, when connected in series with other power supplies, it is equivalent to current flowing through the panel. In this ...

Support Customized Product



Should Solar Panels Be Connected In Series or Parallel?

Series vs. Parallel Connections: A Comparison. Series Connections: How It Works: In a series connection, solar panels are connected end-to-end, with the positive ...



Solar Panel Wiring Basics: Complete Guide & Tips to Wire a PV ...

This connection wires solar panels in series by connecting positive to negative terminals to increase voltage and connects these strings in parallel. All solar panel strings ...



[How to connect three 100w panel array?](#)

I believe I should parallel connect the panels. The third panel will be placed next to the AC shroud. So I must assume that panel will be in shade once in a while. HQST ...

How To Wire Solar Panels In Parallel: A Step-By-Step Guide

Solar panel wiring in parallel allows for greater efficiency in shade. Skip to content. 0. Menu. Menu. four 100W panels with a rated voltage of 20.3V and a current of ...



Series vs. Parallel Connections Specific to Charge Controllers

You would also likely need branch connectors to finish the parallel connections of the solar panel wires. When connecting panels in parallel, the voltage values are not added ...



4x100w panels in parallel

With three or more panels in parallel each panel needs be fused at the labeled max fuse rating. For my Renogy 100W panels that is 15 amperes. I used a 4 space fuse panel from Blue Sea.

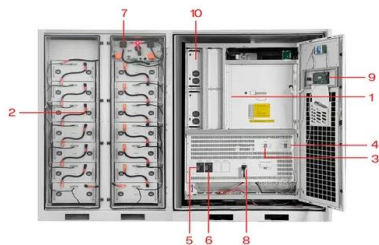


Solar Panel Fuse Calculator: How to Determine the Required Fuse ...

What Size Fuse for 100W Solar Panel? To determine the proper fuse size for a 100W solar panel, you have to find the maximum short circuit current of the panel. You can ...

Connecting Solar Panels in Series or in Parallel?

Yes, many large solar panel installations combine series and parallel wiring in one array to maximize the product of each group of panels. It's possible to strike the optimal ...



- 1 PCS Module
- 2 Battery room
- 3 Grid side circuit breaker
- 4 Load side circuit breaker
- 5 OPV1 side circuit breaker
- 6 OPV2 side circuit breaker
- 7 High Volt Box
- 8 BAT side circuit breaker
- 9 LCD display screen
- 10 MPPT

How to Connect Solar Panels in Parallel: A Step-by-Step Guide

Step-by-Step Guide to Wiring Solar Panels in Parallel. Starting to wire solar panels in parallel calls for careful solar panel assessment. This ensures they match your ...



Guide to Solar Panel Parallel vs Series Wiring

Electrical current, voltage, and power in solar panel systems 101. Whether your solar panels are connected in series or in parallel, there are three fundamental concepts to ...



Ultimate Guide to Solar Panels in Series vs. Parallel

When connected in parallel, four 100-watt panels with a combined maximum voltage of 17.9 volts could generate 17.9 volts. The same panels could generate 71.6 volts when connected in series. The Jackery ...

How to Connect Two or More Solar Panels Together

Identify Terminals: Find the positive and negative terminals on each solar panel. Connect Panels: In this example, we can connect two 100W panels in either parallel or ...



Wiring Solar Panels in Series vs Parallel: Which Is ...

Solar cells can also be arranged in parallel, where each solar panel is connected to every other panel in the circuit. Unlike connecting in series, connecting in parallel allows the voltage to stay the same, but the current adds ...



Series vs. Parallel

Learn about series, parallel, and series-parallel connections in solar panel systems. Understand why each connection type is used and how to set up your system accordingly. Discover the benefits and considerations of each ...

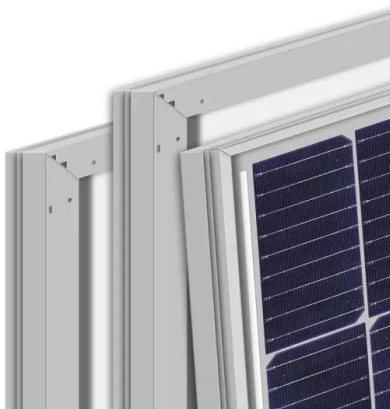
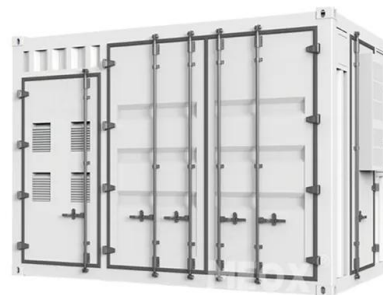


Solar Panel Series vs Parallel: What's The Difference

Wiring Solar Panels in Parallel. When discussing solar panel series vs parallel configurations, parallel wiring is a distinct approach to connecting multiple solar panels. In a parallel connection, all positive terminals ...

[Solar Panels Connected in Series/Parallel](#)

In this information blog, we will try and help you understand how to connect solar panels together, in parallel or series, as both have very different outcomes regarding the voltage and current output from the solar panels. Several solar ...



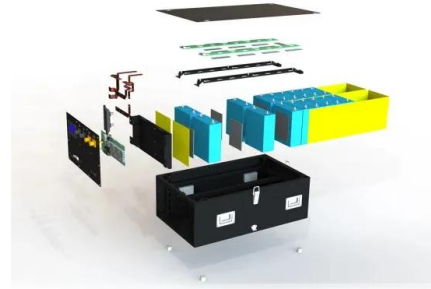
[How to Connect 3 Solar Panels in Parallel](#)

For the same, if you have solar panel 4, carry on the connection from panel 3 to panel 4 and then connect it with the controller. This is how to connect 3 solar panels in ...



Parallel connecting 4 100w panels , DIY Solar Power Forum

Limited-time deal: A ABIGAIL Solar Connectors Y Branch Parallel Adapter Cable Wire Plug Tool Kit for Solar Panel 1 to 4 Solar Panel Connectors Wire Plug (M/FFFF, ...



Should You Wire Your Solar Panels In Series Or Parallel?

Example: If you have four 100W solar panels wired in series-parallel (two series strings of 2 x 100W panels wired in parallel) and each panel outputs 5A at 20V, your ...

[How to Connect 2 100 Watt Solar Panels](#)

What size battery for a 100-watt solar panel would be suitable? You would need a 100 Ah 12V battery for a 100-watt solar panel. When Are Series and Parallel Circuits Used? Series. Series circuits are rarely found in ...



Connecting Solar Panels in Series or in Parallel: Which ...

Hybrid Setups (Series-Parallel) For large residential solar panel arrays, a hybrid configuration of series and parallel wiring is often the optimal solution. However, using a string inverter and PV panels you connect in ...



Contact Us

For catalog requests, pricing, or partnerships, please visit:
<https://vdbconstruction.co.za>