

2006 tacoma power steering system diagram





Overview

Do you use seat belts on a 2006 Tacoma?

Page 422 06 01.06 WE REALLY CARE ABOUT YOU PLEASE BUCKLE UP Toyota has made a special effort to encourage use of seat belts. Toyota belts are: Comfortable Easy to use Convenient We encourage you to use your belts every time you drive. View and Download Toyota 2006 Tacoma service manual online. 2006 Tacoma automobile pdf manual download.

What is the repair manual for Toyota Tacoma?

Page 421 The repair manual outlines exactly what main— The repair manual for TOYOTA TACOMA may tenance is required and clearly explains how to do the be purchased from any Toyota dealer or the work yourself step— by— step. Material Distribution Center. To purchase the Areas covered include such things as spark plug re—.

What switches are on a 2006 Toyota Tacoma?

17. Emergency flasher switch 18. Cigarette lighter 19. Parking brake lever (manual transmission) 2006 TACOMA from Jan.'06 Prod. (OM35871U) I n f o r ma t i o n P r o v i d e d b y :. Page 6 22. Clutch start cancel switch 23. "DAC" switch 24. Power rear view mirror control switches 2006 TACOMA from Jan.'06 Prod.

Are 2006 Toyota Tacoma parts reliable?

Driving 2006 Toyota Tacoma should be a safe and exciting experience. So all parts you can get from us are, without doubt, the most reliable ones. In other words, they are OEM parts. OEM stands for Original Equipment Manufacturer. These replacement parts will make your car perform as if it was fresh from the factory.

What's on a 2006 Toyota Tacoma?

Power rear view mirror control switches 2006 TACOMA from Jan.'06 Prod.



(OM35865U) 4. Service reminder indicators and 7. Trip meter reset knob indicator lights 2. Speedometer 8. Shift position indicator lights (automatic 5. Engine coolant temperature gauge transmission) 3. Odometer and two trip meters 6. Fuel gauge 2006 TACOMA from Jan.'06 Prod.

Where is the front drive control switch on a 2006 Toyota Tacoma?

The front drive control switch knob is in the "H2" or "H4" position. The rear differential is locked. If the indicator light does not come on when the switch is pushed, contact your Toyota dealer. 2006 TACOMA from Jan.'06 Prod.

(OM35865U)



2006 tacoma power steering system diagram



Steering Gear & Linkage for 2006 Toyota Tacoma

Description: Fits Tacoma Power Steering Pump - Repair or Replace if the steering in your Toyota whines or groans, or if your steering wheel is hard to turn, you may have a failed Power steering pump. Tacoma. 4.0l. 2wd. Tacoma. 4.0l. 4wd. 4.0L, without x-runner.

The Ultimate Guide: Understanding the Toyota Tacoma Front End Diagram

Get a detailed front end diagram of the Toyota Tacoma, including all the key components and their locations. Learn more about the suspension, steering, and braking systems of this popular midsize truck. If you're a proud owner of a Toyota Tacoma, it's important to



Toyota Tacoma Service Repair Manual. Electrical Wiring Diagrams

TOYOTA Tacoma, 4Runner and T100 In this manual: All models with 2.4 and 2.7L inline 4-cylinder petrol engines, as well as 3.0 and 3.4L (V6) engines, RWD and 4WD, equipped with 5 -step manual transmission, or 4-speed AT. Hundreds of illustrations show controls and individual stages of work. Quick and easy troubleshooting sections to help you troubleshoot. Electrical ...

How to Replace Power Steering Rack 2005-15 Toyota Tacoma

How to Replace Power Steering Rack 2005-15 Toyota Tacoma. Installation Instructions. Video



Transcript. Associated Vehicles. Created on: 2020-04-17. This video shows you how to install a new power steering rack in your 2005-15 Toyota Tacoma. Tools needed. 12mm ...



Power Steering Pump Rebuild: How to with photos

I try to search on replacing the power steering pump bearing online but couldn't find anything. So I thought I would share my experience with it. I call it a rebuild but I only replaced the bearing and seals. Did it on my 98 Tacoma 2.7. I think the 6 cylinder pump is

Toyota Tacoma power steering fluid capacity? , BobIsTheOilGuy

Anyone know the fluid capacity in quarts of the current Tacoma V6 power steering system? I want to change out the factory fluid and I cannot find the capacity ...



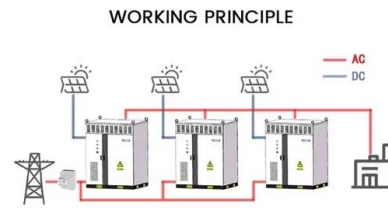
Power Steering Pump

Shop for the best Power Steering Pump for your 2006 Toyota Tacoma, and you can place your order online and pick up for free at your local O'Reilly Auto Parts. Power Steering Pump New; Reservoir Not Included; In-Line Filter Available; For Warranty Purposes It Is Recommended To Always Install A Filter And To Use Suggested OE Fluid And Flush The System; With Seal Kit



[2006 TACOMA Diagram selection](#)

2006 TOYOTA TACOMA (TRN260L-TRMDKA) my cars BASE USA RCB 2TRFE 5F Engine / Fuel Powertrain / Chassis Body Electrical Search parts: Please choose one of 4 diagram categories: Engine / Fuel Engine Water pump Radiator Alternator Starter



[A Visual Guide to Power Steering Systems](#)

Overall, the diagram of a power steering system allows us to visualize how power steering works and how its components interact to provide smooth and effortless steering. By understanding this diagram, we can appreciate the complexity and ingenuity behind this vital automotive system that enhances both driver comfort and vehicle handling.

[All Wiring Diagrams for Toyota Tacoma 2006](#)

List of elements for Computer Data Lines Wiring Diagram for Toyota Tacoma 2006: 2.7l 4.0l A/c amplifier (right side of dash) A10 A18 A21 Air bag sensor assembly center (in center of dash) B17 B18 B19 B20 Bat Canh Canl Combination meter Data link connector 3



Sticky steering on a 2006

Hey, I have a 2006 TRD Sport, totally stock in terms of the suspension/steering. I took it off road, nothing too hard, just some old logging roads. Since then, I've noticed sticky steering when turning left and right. Is this something related to an alignment, or is it





A Detailed Diagram of the Power Steering System in a 2006 F150

Find the power steering diagram for the 2006 F150. This diagram shows the layout and components of the power steering system in the vehicle. If you are experiencing issues with your power steering on a 2006 Ford F150, understanding the power steering system



How to change the rack and pinion steering -2nd gen V6

I thought I'd do a quick write up on how to change out the rack and pinion steering on a 2nd generation Tacoma with a 4.0L V6. First question is: when do you need to replace your rack and pinion? My thoughts: when your seals are leaking badly enough that the boots on the inner tie rods are constantly wet and you're having to regularly replace power steering fluid in ...

Step-by-Step: Replacing the Steering Rack on a 1st Gen Tacoma ...

If you have your 1st gen Tacoma long enough, you'll most likely have to replace the steering rack. This is a job that intimidates a lot of people, but with the right tools - and there aren't many specialty tools needed - the job isn't actually all that difficult. In fact, I was able to get it done in the rain, though I'd recommend waiting for a dry day if you don't have a shop to work in.



2005 to 2006 Toyota Tacoma OEM Repair Manuals

2005 to 2006 Toyota Tacoma OEM Repair Manuals R.M. 2006::Introduction: How To Use This Manual: General Information (Tacoma) R.M. 2006::Introduction: Identification



The Ultimate Guide to Understanding the 2006 Toyota ...

Explore the 2006 Toyota Tacoma parts diagram to find the right replacement parts for your truck. Our detailed diagram makes it easy to identify and order the exact parts you need for your Toyota Tacoma model. Shop with confidence ...



[Replacing power steering lines](#)

I took my 2006 Tacoma to a shop to replace both the power steering pressure and return lines along with draining and refilling the reservoir. I think My estimated hours is 1.5 for the pressure 1.2 for the return Add .3 hours for severe conditions. This doesn't include



2006 Toyota Tacoma Steering Parts , Columns, Racks, Pumps -- ...

Toyota Tacoma 2006, Power Steering Pump by Vision-OE®. Quantity: 1 per Pack. Power steering systems depend on the hydraulic fluid circulated by the pump. When it's time to replace this vital part, technicians and their customers want





[2006 Toyota Tacoma Power Steering Pump](#)

With ToyotaPartsDeal , you have access to an extensive inventory of genuine 2006 Toyota Tacoma Power Steering Pump, all priced competitively. Feel secure in your purchase, as all ...



2006 Toyota Tacoma 4.0 Belt Diagram: A Comprehensive Guide ...

As a proud owner of a 2006 Toyota Tacoma with a 4.0 engine, it's important to have a comprehensive understanding of your vehicle's belt system. The belt system plays a crucial role in the overall functionality and performance of your vehicle. Without a properly



Understanding the 2010 Toyota Tacoma V6 Serpentine Belt Diagram

The 2010 Toyota Tacoma is a popular mid-size pickup truck known for its reliability, durability, and off-road capabilities. One of the most essential components in its engine is the serpentine belt, which plays a crucial role in driving various systems and accessories.



Step-by-Step Guide: 2006 Toyota Tacoma Wiring ...

The 2006 Toyota Tacoma wiring diagram is a valuable tool for anyone working on the electrical systems of their Tacoma. Whether you are a professional mechanic or a DIY enthusiast, this diagram provides detailed information on the wiring ...



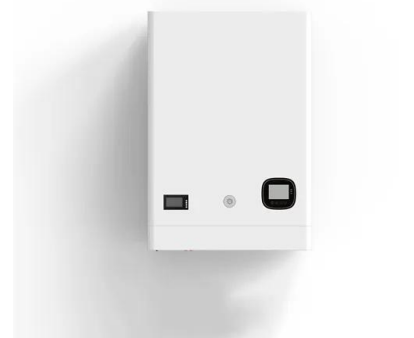


Toyota Tacoma Power Steering Fluid Leak: Causes and Solutions

One of the most common problems that can happen with a vehicle over time is it'll begin leaking power steering fluid. Without the power steering system, your Tacoma would be very difficult to drive. Most of the weight of the vehicle is absorbed by the power steering system, making it feel much lighter than it really

2006 Toyota Tacoma

Shop for the best Rack And Pinion Complete Unit for your 2006 Toyota Tacoma, and you can place your order online and pick up for free at your local O'Reilly Aut Contact Your Local Store Click here to find a store. Check Order Status Check



2006 Toyota Tacoma Parts

2006 Toyota Tacoma Parts Specifications for Engine and Transmission. Shop OEM 2006 Toyota Tacoma Parts at wholesale prices. You will find everything you need in this complete online ...



How To Change Your Toyota Tacoma Power Steering ...

If you have ever had to change your power steering pump, you know it can be a difficult and confusing process. There are a lot of steps involved, and it's easy to make a mistake. This article will guide you through the process ...





[Fuse Box Diagram Toyota Tacoma \(2005-2015\)](#)

Name Amp Designation 1 A/C 10 Air conditioning system 2 FR FOG 15 2005-2011: Front fog lights 2 TOWING TAIL 30 2012-2015: Trailer lights (tail lights) 3 TOWING TAIL 30 2005-2011: Trailer lights (tail lights) 3 FOG FR 15 2012 ...



 LFP 48V 100Ah

2006 Toyota Tacoma Rack & Pinion Steering Systems

Toyota Tacoma 2006, Hydraulic Power Steering Rack and Pinion Assembly by Maval®. Quantity: 1 per Pack. Steer your way with peace of mind by upgrading to hard-core off-road steering system parts built by Maval to give you the confidence



Contact Us

For catalog requests, pricing, or partnerships, please visit:
<https://vdbconstruction.co.za>