

330 Daily power generation of photovoltaic panels





Overview

The first factor in calculating solar panel output is the power rating. There are mainly 3 different classes of solar panels: 1. Small solar panels: 50W and 100W panels. 2. Standard solar panels: 200W, 250W, 300W, 350W, 500W panels. There are a lot of in-between power ratings like 265W, for example. 3. Big solar panel.

If the sun would be shining at STC test conditions 24 hours per day, 300W panels would produce 300W output all the time (minus the system 25%).

Every electric system experiences losses. Solar panels are no exception. Being able to capture 100% of generated solar panel output would be perfect. However, realistically, every solar.

On average, solar panels will produce about 2 kilowatt-hours (kWh) of electricity daily. That's worth an average of \$0.36. How many kWh does a solar panel produce a day?

So, the kWh output of the solar panel daily = Wattage (W) * Hours of sunlight * Efficiency In this case, kWh of solar panel = $300 * 4 * 0.2$, where the efficiency of the solar panel is 20%. = 2.4 kWh With a quick solar panels KWH calculator in hand, it is essential to consider here that several factors may impact this production.

How do you calculate kWh generation of a solar panel?

The daily kWh generation of a solar panel can be calculated using the following formula: The power rating of the solar panel in watts ×— Average hours of direct sunlight = Daily watt-hours. Consider a solar panel with a power output of 300 watts and six hours of direct sunlight per day. The formula is as follows:.

How much electricity can a 430 watt solar panel produce?

Solar panels are usually around 2m², which means the typical 430-watt model will produce 372kWh across a year. A solar panel system will need space on either side, so finding out your roof's area is only one part of working out how much solar electricity you can generate, but it's a great first step.



How many kWh does a 300 watt solar panel produce?

Just slide the 1st slider to '300', and the 2nd slider to '5.50', and we get the result: In a 5.50 peak sun hour area, a 300-watt solar panel will produce 1.24 kWh per day, 37.13 kWh per month, and 451.69 kWh per year. Example: What Is The Output Of a 100-Watt Solar Panel?

Let's look at a small 100-watt solar panel.

How much electricity can a 400W solar panel produce?

Multiplying this value by 30 days, we find that such a solar panel can produce around 54 kWh of electricity in a month. In states with sunnier climates like California, Arizona, and Florida, where the average daily peak sun hours are 5.25 or more, a 400W solar panel can generate 63 kWh or more of electricity per month.

How much power does a 370 watt solar system produce?

a single solar panel will produce on average 70-80% output of its total capacity per peak sun hour. For Example, one 370-watt solar panel will produce about 260-300 watts of output in one peak sun hours How much power does a 20kW solar system produce per day?



330 Daily power generation of photovoltaic panels

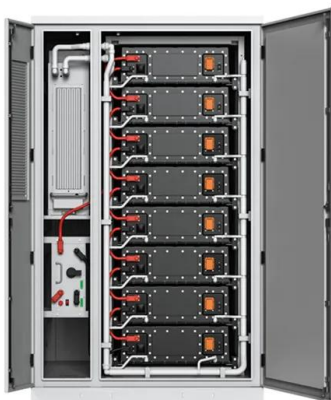


Advancements In Photovoltaic (Pv) Technology for Solar Energy Generation

This comprehensive overview illuminates the progress made and the potential of PV technology to shape the future of solar energy generation. Discover the world's research ...

[How to Calculate Solar Panel kWh](#)

The daily kWh generation of a solar panel can be calculated using the following formula: The power rating of the solar panel in watts x Average hours of direct sunlight = Daily watt-hours. Consider a solar panel ...



How To Calculate Solar Panel Output , 60 Hertz

For one panel, the daily energy output is calculated as $400W \times 5 \text{ hours} \times 0.22 = 440Wh$, or 0.44 kWh . If installation includes 100 panels, the total daily output becomes $0.44 \text{ kWh} \times 100 = 44 \text{ kWh}$...

Potential assessment of photovoltaic power generation in China

For China, some researchers have also assessed the PV power generation potential. He et al. [43] utilized 10-year hourly solar irradiation data from 2001 to 2010 from ...



Example of daily load profile for solar PV production relative to

Example of daily load profile for solar PV production relative to electricity demand in 2050 - Chart and data by the International Energy Agency. Electricity generation by source in Southeast ...



Solar power generation by PV (photovoltaic) technology: A review

For the generation of electricity in far flung area at reasonable price, sizing of the power supply system plays an important role. Photovoltaic systems and some other renewable ...



Effects of different environmental and operational factors on the PV

The sun is the source of solar energy and delivers 1367 W/m² solar energy in the atmosphere. 3 The total global absorption of solar energy is nearly 1.8 × 10¹¹ MW, 4 ...





Understanding Solar Photovoltaic (PV) Power ...

Solar photovoltaic (PV) power generation is the process of converting energy from the sun into electricity using solar panels. Solar panels, also called PV panels, are combined into arrays in a PV system. Directional ...



[Solar Panel Output Calculator](#)

How much power or energy does solar panel produce will depend on the number of peak sun hours your location receives, and the size of a solar panel. just to give you an idea, one 250-watt solar panel will produce about ...

Design methodology and implementation of stand-alone solar photovoltaic ...

While Day-2 shows the overall PV array power to be 130% higher than the daytime load power and 56.3% higher than the overall daily load power, The energy balance ...



How many solar panels do you need to power a UK home?

This will hold on to the power generated during sunny hours, so you can keep living off-grid all year round. Read more about batteries, and other home energy storage ...



Solar energy--A look into power generation, challenges, and a ...

Solar energy--A look into power generation, challenges, and a solar-powered future. International Journal of Energy Research. 43(6031) DOI:10.1002/er.4252. Authors: ...



Day-ahead solar photovoltaic energy forecasting based on

Photovoltaic (PV) panels are used to generate electricity by using solar energy from the sun. Although the technical features of the PV panel affect energy production, the ...

An improved model for available solar energy on Mars: ...

Solar energy is the most accessible source of electrical power on Mars (Delgado-Bonal et al., 2016) and has been a topic of interest in Mars Exploration for some ...



How to calculate the annual solar energy output of a photovoltaic ...

r is the yield of the solar panel given by the ratio : electrical power (in kWp) of one solar panel divided by the area of one panel. Example : the solar panel yield of a PV module of 250 Wp ...



Solar explained Photovoltaics and electricity

Sunlight is composed of photons, or particles of solar energy. Electricity generation at utility-scale PV power plants increased from 6 million kilowatthours (kWh) (or ...



[How to Calculate Solar Panel KWp \(KWh Vs. KWp\)](#)

1. Find the total solar panel area (A) in square meters by multiplying the number of panels with the area of each panel.
2. Determine the solar panel yield (r), which represents the ratio of the electrical power (in KWp) ...

Calculating the Kilowatt Hours Your Solar Panels ...

Divide your average monthly usage by 30 days in a month to get your daily usage. If you're going by the national average, then you should be using about 30 kWh per day. On average, your solar system is going to lose ...



Photovoltaic (PV) Solar Panel Energy Generation data

This dataset contains voltage, current, power, energy, and weather data from low-voltage substations and domestic premises with high uptake of solar photovoltaic (PV) ...



Optimized forecasting of photovoltaic power generation using ...

The massive deployment of photovoltaic solar energy generation systems represents a concrete and promising response to the environmental and energy challenges of ...



Environmental impacts of solar photovoltaic systems: A critical review

Among renewable energy resources, solar energy offers a clean source for electrical power generation with zero emissions of greenhouse gases (GHG) to the ...

Typical daily solar generation curve and load curve.

Solar photovoltaic energy is widespread worldwide and particularly in Europe, which became in 2016 the first region in the world to pass the 100 GW of installed capacity.



Evaluating the real-world performance of vertically installed ...

1 Introduction. The rising need for eco-friendly and renewable energy solutions has amplified the focus on photovoltaic (PV) systems. Bifacial PV (BiPV) panels, among these ...



Solar Energy News -

1 ??· Solar Energy Information. Read the latest news and techniques for efficient solar photovoltaic power, new solar energy systems and more. Harnessing Molecular Power: ...



[Solar Panel Sizes and Wattage Explained](#)

Solar Panel Size. It focuses on maximum electricity generation and overall capacity rather than the quantity of panels. To calculate the required system size, multiply the ...



[Photovoltaic panels tilt angle optimization](#)

The tilt angle of solar panels is significant for capturing solar radiation that reaches the surface of the panel. Photovoltaic (PV) performance and efficiency are highly ...



The Panel Generation factor (PGF) proof Nov. 10, 2017 ...

The Panel Generation factor (PGF) - proof Nov. 10, 2017 Page 2 of 2 where k is the index of the month; $k = 1$ to 12 The minimum daily energy production based on monthly average hourly ...



Contact Us

For catalog requests, pricing, or partnerships, please visit:
<https://vdbconstruction.co.za>