

# 400 watt q cells mono all-black solar panel





## 400 watt q cells mono all-black solar panel



### Q CELLS 400W Solar Panel 144 cell G5.3 Q.PEAK DUO L

All Hanwha Q CELLS products All 400 Watt Panels Attachments Q CELLS Q.PEAK DUO L G5.3 400W.PDF Warranty.PDF Installation Manual.PDF Specification Length 79.3in Width 39.3in Rated Power Output 400 W Voltage (VOC) 41.04V Number of cells

### 440 watt Emmvee Mono All-Black Solar Panel , SunWatts

400 watt YingLi Mono All-Black Solar Panel Yingli Solar \$240.00 The Yingli Solar 400 watt module features 108 half-cut monocrystalline solar with a sleek all-black appearance. Featuring higher output and performance, the Yingli Solar module operates at 20.5%



### FLEXIBLE SETTING OF MULTIPLE WORKING MODES



### Top 7 Best 400-Watt Solar Panels in 2024 (Cost, Specs & More)

Similarly, a 400 watt solar panel generates up to 400 watts of power with every hour of direct sunshine. Therefore, a 400 W panel can ideally run 80 of the above-mentioned LED bulbs (50 W x 80 = 400W).

### [Q CELLS Q.PEAK DUO BLK ML-G10+ 400](#)

All you need to know about the Qcells Q.PEAK DUO BLK ML-G10+ 400 solar panel including rating, cost, efficiency, and warranty terms. Power (measured in watts) and efficiency (how well panels convert sunlight to electricity) are some of the most common metrics used to



compare solar panel products.



### [410 watt Silfab Mono All Black Solar Panel](#)

The Silfab 410 watt monocrystalline module features 132 half-cells combined with a black conductive backsheet with a durable black anodized aluminum frame. Delivering higher output and performance, the Silfab SIL-410-HC+ solar panel operates at 20.7%



### **400 Watt Q Cells Mono All-Black Solar 182mm Perc Photovoltaic ...**

Details and Price about Solar Panel Mono Solar Panel from 400 Watt Q Cells Mono All-Black Solar 182mm Perc Photovoltaic Solar Panels 395W 405W 400W 410W 415W - Qingdao ...



### **Q Cells 400W Mono Solar Panel Q.PEAK DUO BLK ...**

With a higher efficiency rate than previous series, the Q.PEAK DUO BLK ML-G10+ is the first 400W module for the residential market and takes high performance to a new level. The G10+ module utilizes Q CELLS' zero gap ...





### QCells 400W Solar Panel Review: Specs, Warranty

With a -0% tolerance rating, the Q.PEAK DUO BLK ML-G10+ 400 panel operates at or above 400 W. American made Q Cells' tolerance means real world performance under Texas' most extreme conditions. Temperature Coefficient ...



### Phono Solar 400W Solar Panel 144 cell TwinPlus

Phono Solar 400W Solar Panel 144 cell TwinPlus The panel is made up of 144 monocrystalline half-cells on a white backsheet with a silver anodized aluminum alloy frame. Certified for the most challenging environmental conditions, the Phono Solar ...

### [Hanwha Q CELLS Solar Panels](#)

400 watt Q Cells Mono All Black Solar Panel Q CELLS \$290.00 The 400 watt Q Cells Q.PEAK DUO BLK ML-G10+ monocrystalline module features 132 monocrystalline Q.ANTUM solar half-cells with a sleek all-black design. Delivering higher output and



### 440 watt Sonali Solar Mono All-Black Solar Panel , SunWatts

The Sonali Solar SS-M-440 is a high-performance 440 watt monocrystalline 120 half-cell solar panel. This Sonali solar panel model features a sleek all-black appearance with a black anodized aluminum alloy frame on a black backsheet.





### **Q Cells Q.PEAK DUO BLK ML-G10+ 410W High Efficiency Solar Panel**

The Q Cells Q.PEAK DUO BLK ML-G10+ 410W solar panel offers exceptional efficiency, durability, and aesthetics for residential installations. With Q.ANTUM DUO Z Technology & rigorous quality control, this panel ensures optimal performance and reliability.



### **Q.PEAK DUO BLK ML-G10+**

With a higher efficiency rate than previous series, the Q.PEAK DUO BLK ML-G10+ is the first 400W module for the residential market and takes high performance to a new level. The G10+ module utilizes Q CELLS' zero gap ...

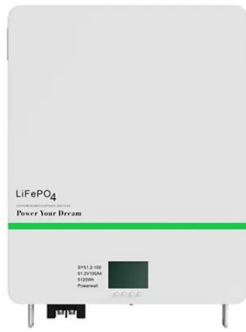
### **Q CELLS Q.PEAK DUO L-G7.2 400 400W Solar Panel**

Low wholesale price on the latest Q CELLS Q.PEAK DUO 400 solar panel w/ 144 half-cut cells. Expert advice & complete systems. Authorized Q CELLS supplier. Q.ANTUM TECHNOLOGY: LOW LEVELIZED COST OF ELECTRICITY Q.PEAK DUO L-G7.2 solar panels provide a higher yield per surface area, lower BOS costs, higher power classes, and a record breaking ...



### [Q.PEAK DUO BLK M-G11 SERIES](#)

MODEL. Q.PEAK DUO BLK M-G11. The ideal solution for: Rooftop arrays on residential buildings. Breaking the 20 % efficiency barrier. Q.ANTUM DUO Z technology with zero gap cell layout ...



Q.PEAK DUO BLK ML-G10+ SERIES

Q.PEAK DUO BLK ML-G10+ Q.PEAK DUO BLK ML-G10+ SERIES MODEL 385~--410~Wp , 132~Cells 20.9~% Maximum Module Efficiency PV MODULE RELIABILITY SCORECARD T 2022 TOP PERFORMER TOP BRAND PV MODULES USA 2022 ~ See data



**Canadian Solar 400W Solar Panel CS1Y-400MS - A1SolarStore**

Canadian Solar 400W Solar Panel is an all-black high density mono PERC module, which offers great power output. Silfab 400W Solar Panel 132 Cell SIL-400-HC+ Assembled in USA Rated Power Output 400 W Voltage (VOC) 43.02V Number of cells 132

Q Cells Q.PEAK DUO ML-G10+ 400W Solar Panel

Low wholesale price on the latest Q.CELLS Q.PEAK DUO BLK-G10 ML BLK 400W Solar Panel with 144 half-cut cells. Expert advice & complete systems. Authorized Q Cells Supplier. Q Cells Q.PEAK DUO ML-G10+ 400W Solar Panel The Q CELLS high-performance module Q.PEAK DUO ML-G10+ 400W is the ideal solution for commercial and utility applications thanks to a ...



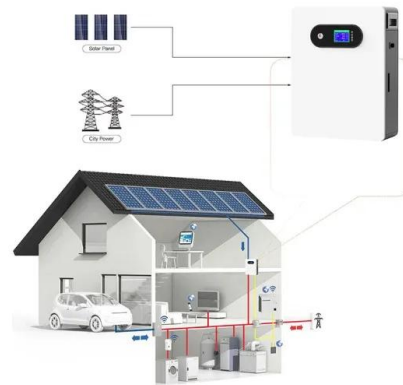


### REC Solar Alpha Series 400 Watt Mono Solar Panel

REC Solar Alpha Pure Black Series > 400 Watt Mono Solar Panel - All Black 132 Half-cut Cell. Mono solar panel. Black back sheet, 30mm black frame. REC Alpha Pure Black modules pack more power than conventional mono perc modules by way of their

### 485 watt Q Cells Mono XL Bifacial Solar Panel

The new Q Cells Q.PEAK DUO XL 485 watt solar panel features 144 monocrystalline bifacial Q.ANTUM solar half-cells. Delivering higher output and performance, the Q.PEAK DUO XL G10 485 watt module operates at 20.9% efficiency to maximize the light absorption area through its innovative Q.ANTUM DUO cell technology, cell separation and wiring.



### Solar Panels

Q CELLS' Solar Panels have up to 25-year product and performance warranty. AC Current Generation You can run your home appliances during the day directly from solar without Inverters, Batteries. BLK All-black Model Their homogeneous black surface

### 425 Jinko Mono All-Black Solar Panel

The Jinko Solar 425 watt monocrystalline all black module is the best in terms of power output and long-term reliability. The JKM425N-54HL4-B solar panel features 108 half-cell monocrystalline solar cells on a black backsheet with a robust black anodized aluminum alloy frame.

To Strive forward No Energy Waste

- ✓ All in one
- ✓ 100-215kWh High-capacity
- ✓ Intelligent Integration

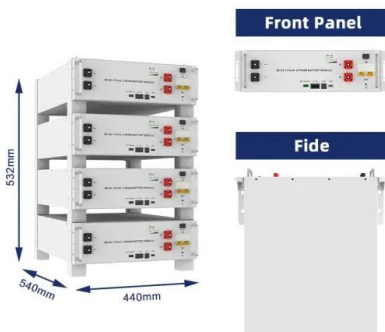


### Q.Peak Duo BLK ML G10+ 400 Watt Mono Solar Panel

Q.ANTUM DUO Z Technology with zero gap cell layout boosts module efficiency up to 20.9 %. THE MOST THOROUGH TESTING PROGRAMME IN THE INDUSTRY Q CELLS is the first ...

### Q CELLS 400W Solar Panel 132 Cell Q.PEAK DUO ...

This 400 W Q CELLS solar panel also comes with a generous 25-year product warranty. Enhanced frame design 400MLQPG10-BK design makes it ideal for residential and commercial rooftops. Strong 1.26" frame made from anodized ...



### 400 watt Hyundai Solar Mono All-Black Bifacial Solar Panel

The Hyundai 400 watt monocrystalline all-black bifacial solar panel is a high power output, reliable panel at an attractive low price. The HiS-S400YH(BK) solar panel is made up of 132 half-cut bifacial solar cells on a black backsheet with a black anodized aluminum frame.

### 410 watt Q Cells Mono All Black Solar Panel

SKU: Q.PEAK-DUO-BLK-ML-G10+410 UPC: MPN: Q.PEAK-DUO-BLK-ML-G10+410 Availability: SHIPS 1 - 2 WEEKS; MIN ORDER 10 Minimum Purchase: 10 units Shipping: The 410 watt Q Cells Q.PEAK DUO BLK ML-G10+ monocrystalline module features 132 monocrystalline Q.ANTUM solar half-cells with a sleek all-black design.





48V 100Ah



### Hanwha Q Cells Q.PEAK DUO BLK ML G10+ 400-12 ...

QCells, 400W PV Module, Black on Black, 132 Half Cut Cells, MC4 Connectors, BLK ML G10+ 400-12 This high-efficiency module is backed by Q.Cells trademark Q.ANTUM cell technology, which is what powers their solar panels to produce ...

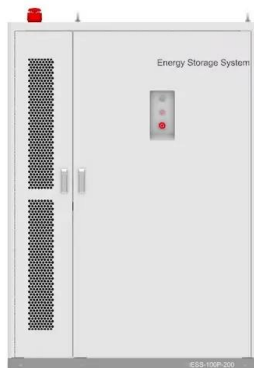
### 400 Watt Solar Panels

400 watt Q Cells Mono All Black Solar Panel Q CELLS \$290.00 The 400 watt Q Cells Q.PEAK DUO BLK ML-G10+ monocrystalline module features 132 monocrystalline Q.ANTUM solar half-cells with a sleek all-black design. Delivering higher output and



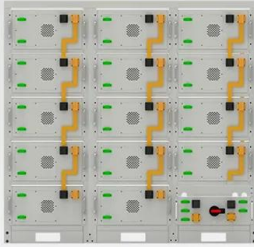
### [400 watt Q Cells Mono All Black Solar Panel](#)

The 400 watt Q Cells Q.PEAK DUO BLK ML-G10+ monocrystalline module features 132 monocrystalline Q.ANTUM solar half-cells with a sleek all-black design. Delivering higher output and performance, this Q Cells solar panel operates at an impressive 20.4% efficiency to maximize the light absorption area through its zero gap cell layout.



### Hanwha Q Cells Q.PEAK DUO BLK ML G10+ 400-12 ...

Product Description. Q Cells 400w Mono Solar Panel - BLK ML G10+ 400-12. QCells, 400W PV Module, Black on Black, 132 Half Cut Cells, MC4 Connectors, BLK ML G10+ 400-12. This high-efficiency module is backed by Q.Cells ...



**Battery String-S224**

- 1C Charge/Discharge
- Easy configuration and maintenance
- Power supply can be single battery string or parallel battery strings



### 485 watt Q Cells Mono XL Bifacial Solar Panel

400 watt Q Cells Mono All Black Solar Panel Q CELLS \$290.00 The 400 watt Q Cells Q.PEAK DUO BLK ML-G10+ monocrystalline module features 132 monocrystalline Q.ANTUM solar half-cells with a sleek all-black design. ...

### 400 watt Q Cells Q.PEAK DUO L-G5.2 Mono XL Solar Panel

The new Q Cells Q.PEAK DUO L-G5.2 400 watt solar panel features 144 monocrystalline Q.ANTUM solar half-cells. Delivering higher output and performance, the Q.PEAK DUO L-G5.2 400w module operates at 19.9% efficiency to maximize the light absorption area through its innovative Q ANTUM DUO cell technology, cell separation and wiring.



### [Q.PEAK DUO BLK ML-G10+ SERIES](#)

The ideal solution for: Rooftop arrays on residential buildings. Breaking the 20 % efficiency barrier. Q.ANTUM DUO Z Technology with zero gap cell layout boosts module efficiency up to 20.9 %. ...

## Contact Us

---

For catalog requests, pricing, or partnerships, please visit:  
<https://vdbconstruction.co.za>