

540W photovoltaic panel area





Overview

To give you an idea, a standard 540 watt solar panel is approximately 88 x 46 inches and tips the scales at around 72 pounds. What is a 540w monocrystalline silicon photovoltaic (PV) panel?

Sharp today announces the addition of a new 540W monocrystalline silicon photovoltaic (PV) panel to its half-cut cell portfolio – the NU-JD540. The new high wattage module is designed specifically for free-field and commercial rooftop installations, providing customers with a cutting edge design and high reliability.

What is a 540w sharp Nu-JD solar module?

The 540W Sharp NU-JD is a premium MCS-certified solar module with 1.75m of special solar cable and MC4-compatible connectors. Half-cut cell construction decreases internal losses, reduces the risk of hotspots and improves performance in shaded conditions. It is suitable for grid-tie, hybrid and off-grid applications.

What is a sharp nujd540 solar panel?

Sharp has been providing solar energy solutions for more than 60 years and has delivered more than 50 million cutting edge photovoltaic (PV) panels worldwide. The Sharp NUJD540 is a 540W solar panel with a silver frame. The panel has a 144 half-cell design and is ideal for large free-field and commercial rooftop photovoltaic systems.

What is the operating temperature coefficient of a nujd540 solar panel?

Its operating temperature coefficient is -0.341% per degree Celsius and its power tolerance reaches up to 5%. The NUJD540 panel. Image: Sharp Japanese electronics manufacturer Sharp has unveiled the NU-JD540 solar panel, a half-cut monocrystalline PERC product with a 20.9% efficiency rating and 540 W of power output.

What is a nujd540 solar panel?



The NUJD540 panel adopts MBB technology for enhanced power output, efficiency and reliability. Solar Panels are subject to a £150 ex VAT delivery charge up to 50 panels. This is due to being transported by pallet. This can take up to 48 hours. But is usually next working day. PRODUCT FEATURES Tested and certified - VDE, IEC/EN61215, IEC/EN61730.

How long does a 144 bifacial double glass solar panel last?

144 half-cell bifacial double glass solar panel designed for large free-field photovoltaic systems, optimized for long-term reliability and performance. Up to 25 Years Product Guarantee for the EU and several other countries: 25 years for modules installed on rooftops and 15 years for non-rooftop installations. 12 years globally.



540W photovoltaic panel area

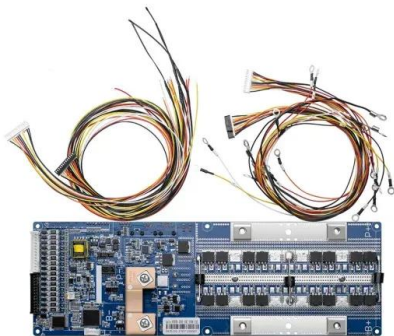


Standard Solar Panel Sizes And Wattages (100W-500W Dimensions)

As we can see, those 60-cell, 72-cell, and 96-cell solar panel dimensions are a bit theoretical. These are the practical solar panel dimensions by wattage from solar panels that are actually ...

540W Bifacial Mono PERC Solar Panel

Our 540W monocrystalline solar panel is designed to perform at its best for years to come, so you can enjoy the benefits of renewable energy with confidence. Don't let space constraints hold ...



Vikram 540W Mono Perc Half Cut Solar Panel - 24V

Vikram 535W 24V Mono Perc Half Cut Solar Panel is a premium quality product from Vikram Solar. All Vikram 535W 24V Mono Perc Half Cut Solar Panel are manufactured by using quality assured material and advanced techniques, ...

Mono Watt Half-cut Mono PERC Solar Panel (Pack of Two) , UTL

What is the size of a 540W solar panel in feet?
The 540W solar panel typically measures approximately: Length: 2285 mm (about 7.5 feet) Width: 1140 mm (about 3.7 feet) 53A/6, ...



[540W Bifacial Mono PERC Solar Panel](#)

Take control of your energy costs with our high-efficiency 540W monocrystalline solar panel. With a rated voltage of 41.39V and a rated current of 13.05A, this panel is designed to deliver ...



[Hyperion 540W Bifacial PV Module , RENVU](#)

Hyperion 540W Double Glass Bifacial Solar Panel
144 Half-Cell Mono PERC 30 mm Silver Frame
1200 mm cables EVO2 connectors 2.0mm AR
Tempered front glass 2.0mm Semi-tempered ...



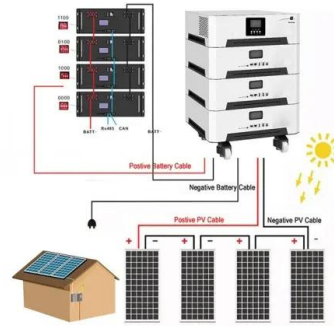
Felicity 540W Solar Panel

Bypass installation area restrictions. High shading efficiency. Felicity 540w Solar Panel Features Glass *Antireflective glass *Self-cleaning function *Module efficiency is increased by 2% *Service life is as long as 25 years ...



540W Sharp NU-JD Monocrystalline Solar Panel with high ...

Brand new 540W solar panel from "Top Brand PV" award-winning manufacturer Sharp, with over 50 million panels installed in every environment and 60 years of solar experience. High ...



Sharp NUJD540 540W Solar Panel Silver Frame Mono ...

The Sharp NUJD540 is a 540W solar panel with a silver frame. The panel has a 144 half-cell design and is ideal for large free-field and commercial rooftop photovoltaic systems. Sharp solar panels undergo rigorous testing to ensure ...

Solar Panel kWh Calculator: kWh Production Per Day, ...

How many kWh does this solar panel produce in a day, a month, and a year? Just slide the 1st slider to '300', and the 2nd slider to '5.50', and we get the result: In a 5.50 peak sun hour area, a 300-watt solar panel will produce 1.24 kWh per ...



Calculate Rooftop Area for Solar Panel Installation

Navitas Solar offers a guide on calculate rooftop area for solar panels, ensuring efficient space usage and optimal solar energy generation. Generally, the Total Size of 1 ...



Evolve Energy , EVVO 530-540W-182M/144 , Solar Panel ...

Evolve Energy Group (EVVO Solar) Solar Panel Series EVVO 530-540W-182M/144. Detailed profile including pictures, certification details and manufacturer PDF



Waaree 540W 144 Cells Monocrystalline PERC Solar Panel, ...

The Waaree 540W 144 Cells Monocrystalline PERC Solar Panel is a high-efficiency solar panel that is perfect for residential or commercial applications. This panel is made of high-quality ...

Adani 540 Watt Solar Panel Mono PERC Half Cut

No. of Cells: 144 Cells Watt: 540 W Application: Commercial Applications, Homes & Small Shops Open Circuit Voltage (VOC): 48.92 V Panel Type: Monofacial PV Modules Module Voltage: 42 ...



540W Sharp NU-JD Monocrystalline Solar panel with high ...

Photonic Universe are proud to present this high quality 540W solar panel from leading solar panel manufacturer Sharp, which has over 60 years of experience with solar technology and ...





Buy a Sharp 540W Mono Solar Panel for Large Rooftops

The high wattage 144 half-cell solar panel is designed for large free-field and commercial rooftop photovoltaic systems, optimised for long-term reliability and performance. NU-JD540 has a module efficiency of 20.89% and is designed ...



540W Sharp NU-JD Solar panel with High-Efficiency PERC Cells

The 540W Sharp NU-JD is a premium MCS-certified solar module with 1.75m of special solar cable and MC4-compatible connectors. Half-cut cell construction decreases internal losses, ...



51.2V 150AH, 7.68KWH

Felicity 540W Mono Crystal Solar Panel

Felicity 540W Mono Crystal Solar Panel Model: FL-H-540W 540W High Efficiency Best Home Solar Energy Panel Improve the durability of solar panels. Higher output rating than common ...

Nominal Capacity
280Ah
Nominal Energy
50kW/100kWh
IP Grade
IP54



540 Watt Solar Panel Manufacturers, Suppliers, Factory

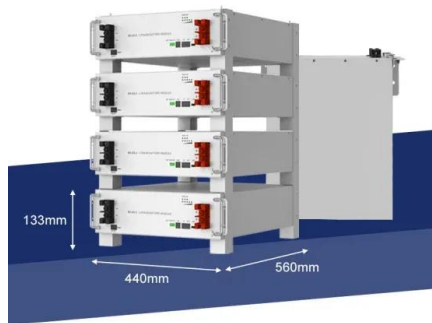
We're professional 540 watt solar panel manufacturers and suppliers in China, specialized in providing high quality products made in China for sale. This 540W solar panels is with ...





Sharp launches 540 W half-cut PV module with 20.9

Japanese electronics manufacturer Sharp has unveiled the NU-JD540 solar panel, a half-cut monocrystalline PERC product with a 20.9% efficiency rating and 540 W of power output.. The IEC/EN61215



ZNShine Solar 540W Solar Panel 144 Cell Bifacial ZXM7 ...

ZNShine Solar 540W Solar Panel 144 Cell Bifacial ZXM7-SHLDD144-540/M is the highest power solar module in residential US market. Look into detailed descriptions, ...

Contact Us

For catalog requests, pricing, or partnerships, please visit:
<https://vdbconstruction.co.za>