

Are the solar tube and bracket parallel





Overview

If you're using more than one solar panel, connecting each PV module together and to a portable power station or other balance of system is essential. Solar panels on their own are useless. The magic happens when you connect a PV module to a solar inverter or charge controller to convert or store electricity. Regardless of.

In most modern solar panel arrays, the physical act of wiring multiple solar panels together is as simple as plugging in a cable. But before you do so, there's one essential decision to make. Should you connect your solar panels.

Connecting solar panels in series or parallel has its pros and cons. Can you have the best of both worlds?

Yes, many large solar panel.

If you've already purchased your solar panel array and balance of system and you'd like to install them yourself, here are seven basic steps that.

Are solar panels in series or parallel?

There are two options for connecting numerous solar panels in a system: series and parallel. This blog aims to explain why wire solar panels are in series or parallel, compare their differences, pros, and cons, and discuss which connection is the most beneficial to use based on your circumstances.

How are solar panels wired to each other?

Solar panels are wired to each other in two different ways: series and parallel. Every solar panel has a negative and positive terminal, just like the batteries you use at home, and how they're connected determines whether your system is in series or parallel.

Should I connect my solar panels in parallel?

If at least some of your solar panel system will often be in the shade, connecting your panels in parallel could be the answer. If one of your panels is obstructed, parallel wiring ensures the other panels operate as usual.



How do you wire solar panels in parallel?

(Source: Alternative Energy Tutorials) To wire solar panels in parallel, connect each panel's positive terminals together. You also connect all the negative terminals to one another. Parallel wiring results in amperage accumulating and voltage remaining the same. The exact opposite effect of series wiring.

Are solar panels connected in series?

Solar panels are linked in series and collectively produce energy. Because it enables the most sunlight to reach the panel and make the most power, this solar panel installation method is typically the most effective. Solar panel series use does have some drawbacks, though.

How do you wire a solar panel in a series?

Connect the positive terminal on the first solar panel to the negative terminal on the second, and so forth, to wire solar panels in sequence. All of the panel voltages in the series will be added to produce the final voltage. However, the overall current will be the same as one panel's outgoing current.



Are the solar tube and bracket parallel

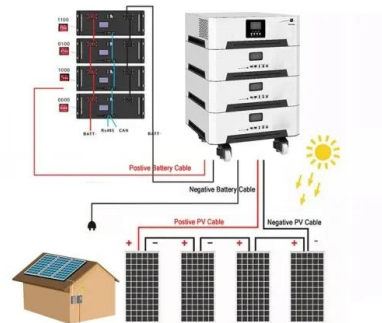


Ultimate Guide to Solar Panels in Series vs. Parallel

There are two options for connecting numerous solar panels in a system: series and parallel. This blog aims to explain why wire solar panels are in series or parallel, compare ...

[DN16 Solar tube fittings , Connection set](#)

DN12 solar tube back nut. DN12 x 3/4" BSP solar pump station connector DN16 stainless steel tube solar connection set . DN16 back nut fiber washer and circlip set DN16 C clip back nut ...



Anleitung: Solarmodule richtig in Reihe & parallel schalten

Für einen optimalen Betrieb von Photovoltaikanlagen müssen eine Vielzahl von Faktoren beachtet werden. Die bedarfsgerechte und leistungsoptimierte Verschaltung von Solarzellen und ...

Solar hot water system installation guide for evacuated tube ...

collector's thermal efficiency. This efficiency measures the solar collector's ability to convert incoming solar radiation to usable heat in the form of a hot working fluid. This hot working fluid ...



Solar Panel Brackets: The Ultimate Guide, types and best options.

Types of Solar Panels Brackets. There are different types available, including railless brackets, and top-of-pole mounts, the specific type of bracket or clamp chosen ...

Solar module mounting bracket assemblies

Solar mounting systems are provided to support and couple an array of one or more photovoltaic ("PV") modules to a framework, such as, for example, a plurality of parallel-oriented, rotatable ...



How to Install a Solar Tube

Make the necessary adjustments to clear the path for the solar tube. Measure and Mark the Roof. Measure and mark the precise location where the solar tube will penetrate the roof. Accurate ...



Installing Solar Panel Roof Mount Brackets, So They Will Not Leak

DIY Solar Panel Installation: Mounting, Wiring, and Combining Arrays for Maximum Efficiency
Description: In this comprehensive tutorial, we guide you through

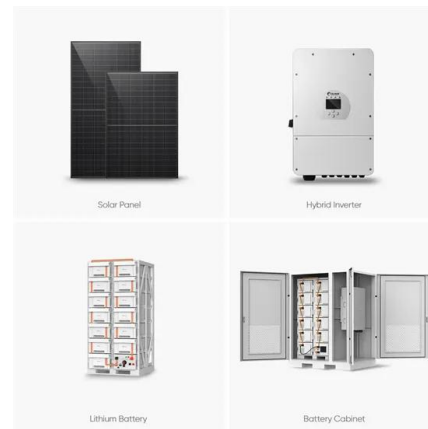


[Series and Parallel Connections Video](#)

Mounts & Brackets. IOT Monitoring. Accessories. View All Outdoors & Lifestyle Heated Vests. Shoe Dryers. Portable Power Stations These videos show how to connect ...

[Series vs Parallel Solar Panel Wiring Basics](#)

Learn the difference between wiring your solar panels in series and parallel. We'll also explain how to combine both of these configurations to wire your panels in a series ...



[EVACUATED TUBE COLLECTOR SOLAR-LUX 6/12](#)

Fig. 2 Functional diagram of an evacuated tube collector, here: type Solar-Lux 6 = 6 tubes (type Solar-Lux 12 = 12 tubes) 1 Manifold 2 CPC mirror for optimum sunlight utilisation 3 Heat ...



Stainless Steel Tube Flange Mount, Parallel Mount Bracket, 316

The tube is secured to the flanged stainless steel mounting bracket with two M6 grub-screws. These stainless steel tube mounting brackets can be used as flag-pole mounts / bimini mounts ...



How to Design a Solar Pump System: A Step-by-Step Tutorial

Mounting: Securely mount the PV combiner box close to the solar panels.. Connections: Connect the positive and negative terminals of the solar panels to the ...

How to Build and Crimp Solar Extension Cables with ...

In this video I will show you how to build your own solar extension wire with MC4connectors.00:00 - 00:17 Intro00:18 MC4 Connectors Anatomy02:31 Selecting th



CE UN38.3 MSDS



DN12 Solar tube fittings , Flexible thermal connection set

DN12 solar tube back nut. DN12 x 3/4? BSP solar pump station connector DN16 stainless steel tube solar connection set. DN16 back nut fiber washer and circlip set DN16 C clip back nut ...



Solar panels serial or parallel with MPPT controller

I am a bit confused on the advantages of connecting solar panels in series vs parallel when using a MPPT controller to charge a 12 volt battery. with 10ft Cable Micro ...



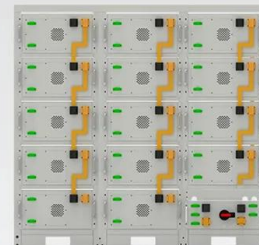
Solar Panel Brackets

Choosing the right solar panel brackets can be a critical decision for the success of your solar energy system. Our team of experts are dedicated to providing you with personalised support ...



Wiring Up Solar Panels: Series, Parallel, or Series-Parallel

The next method of wiring solar panels is in parallel. In this configuration, all the positive ends are connected together, and all the negative ends are connected, maintaining the voltage but adding up the current.



Battery String-S224

- 1C Charge/Discharge
- Easy configuration and maintenance
- Power supply can be single battery string or parallel battery strings

Solar Panels in Series or Parallel: Differences Explained

Adding solar panels can sometimes be more complicated and expensive than expected, but it is generally feasible. Do solar panels charge faster in series or parallel? Wiring in parallel usually ...



Wiring Solar Panels in Series vs Parallel: Which Is Better?

Understand the difference between wiring your solar panels in series vs parallel. You want your solar panels to deliver the maximum amount of energy possible, right? But did you know how your solar panels are connected ...



Z Profiles and Purlins Brackets for Solar power systems

The utility model relates to a solar PV mounting purlins bracket comprises a plurality of beams for fixing the solar photovoltaic modules and roof purlins fixed with mounting pads, a plurality of ...

Should you put your solar panels in series or parallel?

Solar panels wired in parallel are better protected against obstructions. Most solar panel systems feature both connections. As well as knowing the best angle and direction for solar panels, it's important to know if ...



Ultimate Guide to Solar Panels in Series vs. Parallel

This blog aims to explain why wire solar panels are in series or parallel, compare their differences, pros, and cons, and discuss which connection is the most beneficial to use based on your circumstances. There are two ...



Solar Panel Series Vs Parallel: Wiring, Differences, And Your Right

In this tutorial, I'll show you how to wire solar panels in series and how to wire them in parallel. Once we've got that covered, I'll also explain the difference between these ...

12.8V 100Ah



PV Installation Guide

Installing The Solar PV Panels. With the bars in place, the frame is complete and the panels can start to be attached and clamped to the frame. A minimum of 4 clamps is used per solar panel, though in some cases extra clamps are used ...

Solar Panel Wiring Basics: Complete Guide & Tips to ...

There is a solar panel wiring combining series and parallel connections, known as series-parallel. This connection wires solar panels in series by connecting positive to negative terminals to increase voltage and ...



Contact Us

For catalog requests, pricing, or partnerships, please visit:
<https://vdbconstruction.co.za>