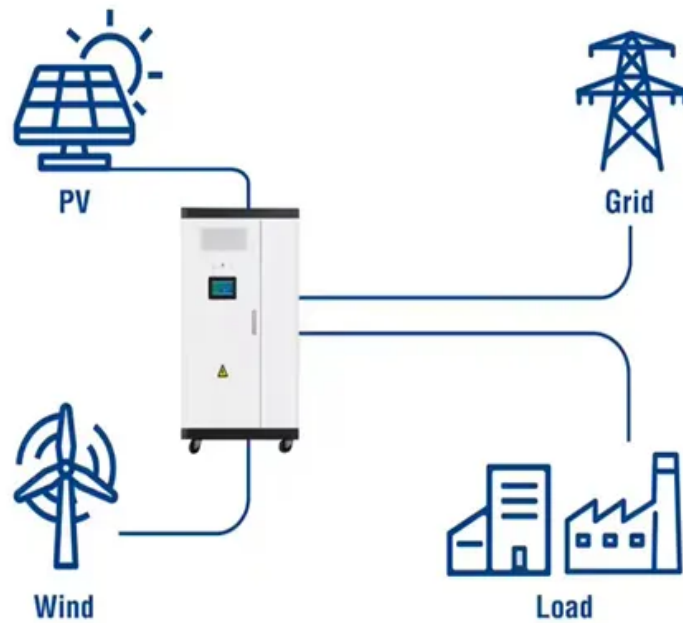


Average office building energy storage price per 500kW in New Zealand

Utility-Scale ESS solutions





Overview

How much does energy storage cost?

Let's analyze the numbers, the factors influencing them, and why now is the best time to invest in energy storage. \$280 - \$580 per kWh (installed cost), though of course this will vary from region to region depending on economic levels. For large containerized systems (e.g., 100 kWh or more), the cost can drop to \$180 - \$300 per kWh.

Do distributed battery energy storage systems work in New Zealand?

A recent study on distributed battery energy storage systems in New Zealand shows that if such systems are appropriately configured, they can respond faster than current providers of instantaneous reserve, recovering frequency faster and stabilising the system with fewer oscillations (Transpower, 2019a). 49.8 Hz and 50.2 Hz.

Are smart refrigerators a good option for NZ Energy Futures?

A study by Imperial College London⁵ on NZ energy futures determined that there are mainly two flexible demand technologies that would be well placed to provide frequency response services - smart refrigerators and electric vehicles (Strbac, et al., 2012).

How much does an electricity retailer charge a consumer?

An electricity retailer may charge a consumer 100 cents/day and 22c/kWh of electricity consumed. 26.6 c/kWh — that is, $(2125/8000) \times 100$. If the Retailer offered a 10% prompt payment discount, the final cost to the consumer would be 23.9 c/kWh. The line charge component is calculated in a similar manner (all figures include GST).

How much does electricity cost in 2021?

These prices are \$271, \$155 and \$154 \$/kW in 2021, 2035 and 2050 respectively. The cost assumptions are summarised below. Based on 2016



capex of USD 21,029 based (Ardani, et al., 2017), and excluding US-market specific cost components. Electricity cost savings are then netted out.

How much does a 100 kWh battery cost?

A standard 100 kWh system can cost between \$25,000 and \$50,000, depending on the components and complexity. What are the costs of commercial battery storage?

Battery pack - typically LFP (Lithium Uranium Phosphate), GSL Energy utilizes new A-grade cells.



Average office building energy storage price per 500kW in New Zealand

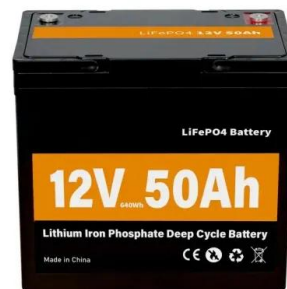


How Much Energy Is Consumed By U.S. Buildings?

But where do commercial property owners spend most of their energy? In this blog, we explore average building energy consumption, where the most energy is spent, and the opportunities for commercial operators to reduce energy usage ...

BATTERY STORAGE IN NEW ZEALAND

We considered hosting our own trial of grid-connected battery storage, but first we chose to investigate the benefits of battery storage across the electricity supply chain. We did this by ...



Thermal Energy Storage in Commercial Buildings

This fact sheet describes the benefits of thermal energy storage systems when integrated with on-site renewable energy in commercial buildings, including an overview of the latest state-of-the ...

Grid-scale battery costs: \$/kW or \$/kWh?

Grid-scale battery costs can be measured in \$/kW or \$/kWh terms. Thinking in kW terms is more helpful for modelling grid resiliency. A good rule of thumb is that grid-scale lithium ion batteries will have 4-hours of storage ...



INTEGRATED DESIGN
EASY TO TRANSPORT AND INSTALL,
FLEXIBLE DEPLOYMENT



[Commercial Energy Usage Comparison by State](#)

Here are some other neat facts about commercial energy consumption: Average Building Energy Use: The average commercial building in the U.S. consumes 22.5 kWh per square foot on an annual basis. ...

What Is The Average Utility Cost Per Square Foot Of ...

For most commercial buildings, energy is the single largest operating expense, most of which comes in the form of electricity. That being the case, the cost of utility-supplied power is of major concern to property ...



Domestic electricity prices in New Zealand towns and ...

Retail price = Lines Component + Energy and Other Component. Energy and other component is found by subtracting lines charges from total retail charges. Lines Charges = Transmission Component + Distribution Component.





Auckland Power Prices Guide: Costs, Trends & Solar ...

Understanding Auckland's electricity costs
Regional price comparisons Auckland's electricity costs, while substantial, actually fare better than several other regions in New Zealand. For context, Kerikeri residents face the highest ...



[Solar Photovoltaic System Cost Benchmarks](#)

The U.S. Department of Energy's solar office and its national laboratory partners analyze cost data for U.S. solar photovoltaic systems to develop cost benchmarks to measure progress towards goals and guide research and development ...

[Solar power in New Zealand](#)

Solar potential of New Zealand Solar panels on a home in Auckland Solar power in New Zealand is increasing in capacity, in part due to price supports created through the emissions trading scheme. As of the end of May 2025, New ...



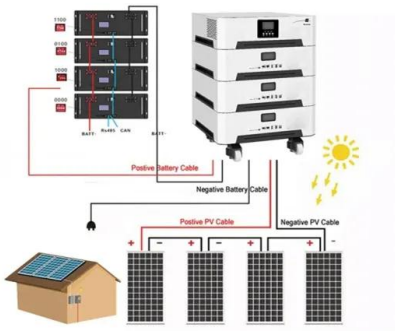
Business energy costs: How much does the average ...

Where are you using energy? - and How much are you spending per unit of energy used? How much does the average office cost to run? It might surprise you which appliances consume the most electricity and costs you the most to ...



[Detailed monitoring results](#)

These results suggested that server electricity consumption might be larger on average than hot water energy consumption in commercial buildings. Temperature: A finding from the Household Energy End-use Project was that ...



[New Zealand electricity prices](#)

The residential electricity price in New Zealand is NZD 0.000 per kWh or USD . These retail prices were collected in December 2024 and include the cost of power, distribution and transmission, and all taxes and fees. Compare New ...

[Energy Storage Cost and Performance Database](#)

hydrogen energy storage pumped storage
hydropower gravitational energy storage
compressed air energy storage thermal energy storage
For more information about each, as well as the related cost estimates, please click on ...



**2MW / 5MWh
Customizable**

[US Energy Use Intensity by Property Type](#)

Using Median Site and Source Energy Use Intensity (EUI) The national median source EUI is a recommended benchmark metric for all buildings. The median value is the middle of the ...





Cost Projections for Utility-Scale Battery Storage: 2021 ...

This report was jointly funded by the U.S. Department of Energy Office of Energy Efficiency and Renewable Energy Office of Strategic Programs, Solar Energy Technologies Office, Water ...

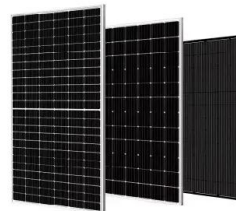


New Zealand's Energy Outlook , Ministry of Business, Innovation

New Zealand's Energy Outlook presents projections of future energy supply, demand, prices and greenhouse gas emissions, aimed at informing the energy debate.

Designing to make a building energy efficient

A typical New Zealand home consumes 10,500 kWh of energy per year. Sustainable energy use means designing homes to conserve energy, obtaining energy from sources that do the least ...



Benchmarking Commercial Building Energy Use Per ...

In this article, we'll discuss the average commercial building energy consumption per square foot, and tell how to measure and compare your own usage with other buildings in your industry. Let's get started.



[New Zealand's 'first grid-scale battery](#)

However, electricity generator and retailer Meridian Energy - owned by UK renewables utility Good Energy - is currently building another project almost three times as big in megawatt terms and of 2-hour duration, ...



Energy prices , Ministry of Business, Innovation & Employment

On this page you can find real and nominal price data relating to New Zealand's energy prices -- petrol, diesel, fuel oil, natural gas and electricity.

[What Does Green Energy Storage Cost in 2025?](#)

In 2025, you're looking at an average cost of about \$152 per kilowatt-hour (kWh) for lithium-ion battery packs, which represents a 7% increase since 2021. Energy storage systems (ESS) for four-hour durations exceed \$300/kWh, marking the ...



LFP 48V 100Ah

Benchmarking commercial energy use per square foot

Book a demo What is the average commercial building energy consumption per square foot? Typically, the average number of kilowatt-hours per square foot for a commercial building is approximately 22.5 kWh per year. Here is the ...



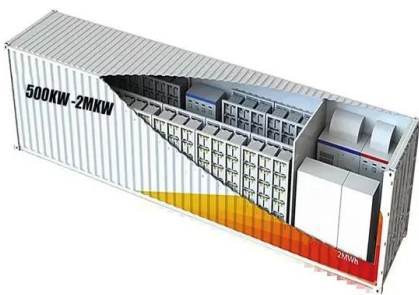
Real average prices of commercial and industrial ...

0 5 10 15 20 25 30 Real average prices of commercial and industrial electricity in New Zealand By type, 1983-2023, NZ cents per kWh (at 2023 prices) Provider: Ministry of Business, Innovation, and Employment 1983 1987 1991 1995 1999 ...



The Real Cost of Commercial Battery Energy Storage ...

With fluctuating energy prices and the growing urgency of sustainability goals, commercial battery energy storage has become an increasingly attractive energy storage solution for businesses. But what will the ...



Solar Photovoltaic System Cost Benchmarks

The U.S. Department of Energy's solar office and its national laboratory partners analyze cost data for U.S. solar photovoltaic systems to develop cost benchmarks to measure progress ...



Average Power Bill in New Zealand 2024

Are you aware of average power bills in New Zealand? It's always a good idea to keep up with the average bills in your area so you can determine if you are paying too much. Kiwi Power Providers Are Changing ...



Contact Us

For catalog requests, pricing, or partnerships, please visit:
<https://vdbconstruction.co.za>