

Blocking diodes for solar panels in parallel

48V 100Ah





Overview

Why do solar panels need a blocking diode?

There is a possibility of the current flowing from the battery to the solar panel, thereby discharging the battery overnight. To prevent this from happening, a blocking diode is installed. It allows the current to flow from the panel to the battery but blocks the flow in opposite direction. It is always installed in series with the solar panel.

What is a blocking diode?

A blocking diode and bypass diode are commonly used in solar energy systems and solar panels. Learn how and why blocking diodes and bypass diodes are used. In simplest terms a diode can be understood as a two terminal electronic device, which allows electrical current to pass in one direction.

Why are blocking diodes used in parallel connected modules?

This not only reduces the required current carrying capability of the blocking diode, but also prevents current flowing from one parallel string into a lower-current string and therefore helps to minimize mismatch losses arising in parallel connected arrays. Impact of blocking diodes in parallel connected modules.

Why do solar panels need bypass diodes?

This is where bypass diodes make a difference. If you connect these diodes in parallel with the solar panels, they will allow the current from the unshaded panel to flow into them. Other than that, bypass diodes also make sure that the current flowing from unshaded panels doesn't end up overheating and igniting the shaded panels.

What are the two types of diodes used in a solar system?

Therefore, the two main types of diodes used in a solar system are: A blocking



diode allows the flow of current from a solar panel to the battery but prevents/blocks the flow of current from battery to solar panel thereby preventing the battery from discharging.

Why are diodes used in solar panels?

Diodes are extensively used in solar panel installations. Since they prevent backflow of current (unidirectional flow of current), they are used as blocking devices. They are also used as bypass devices to maintain the reliability of the entire solar power system in the event of a solar panel failure.



Blocking diodes for solar panels in parallel



BLOCKING DIODE INSTALLATION INSTRUCTIONS

%PDF-1.2 %âãÏ 12 0 obj /Length 13 0 R /Filter /FlateDecode >> stream H?UOA Â@ ,Ap0G=4Mv·»Û«Ö, Oî SS..."ZÄi»® J " l?j [6² RG,WŸN ° ``Éä*aÑ V[à

Maximizing Solar Panel Efficiency: Role of Blocking Diodes

Blocking Diodes in Solar Panels Blocking diodes play a pivotal role in protecting your solar panels and batteries. They ensure that the power flows in one direction - from the solar panel to the battery - and prevent the reverse flow, which could drain the battery at



Blocking Diode for Solar Panels and Its Configuration

A blocking diode for solar panels is a simple yet vital component in many solar systems. It prevents the unwanted reverse flow of current, protecting your panels and preventing battery drain. When configuring a blocking diode, ensure you select the right diode based on your system's current and voltage requirements to maintain optimal efficiency.

Understanding Solar Panel Bypass Diodes

In a solar panel system, blocking diodes are typically connected in parallel to each solar cell or cell group within the panel. When shading occurs, the shaded cells produce less electricity,



causing a voltage drop.



Bypass Diodes vs Blocking Diodes: What are the differences?

Blocking diodes are connected in parallel with the solar panels (or another charging source). When they are working correctly, this will prevent current from flowing backward through the panel when it is dark or low on voltage .

Blocking Diode and Bypass Diode for Solar Panels

Series Diodes Protect Parallel String of Solar Panels (Or Just 1 Joint) Solar Panel Array Design - In layman's terms, the way we refer to our solar panels being wired up together. All of those solar panels connect in a line, notice how. That's called a string. More



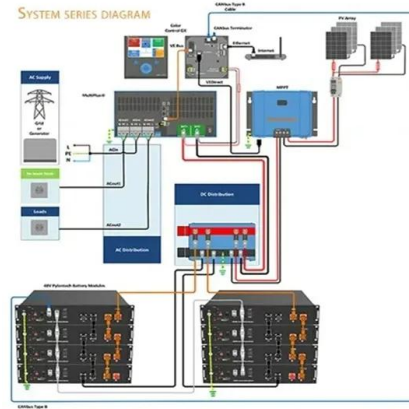
[Bypass Diodes in Solar Panels](#)

Bypass diodes in solar panels are connected in "parallel" with a photovoltaic cell or panel to shunt the current around it, whereas blocking diodes are connected in "series" with the PV panels to prevent current flowing back ...



Bypass Diodes in Solar Panels

Figure 4: The PV array with bypass and blocking diodes In the above figure, the green color diodes placed in parallel to solar panels are bypass diodes.They serve the purpose of a low resistance path and should have the capability to safely handle the rated current.



Connecting panels in parallel with Blocking Diodes

If you place your panels all in the sun, you don't need blocking diodes. panels in the shade are useless. Modern charge controllers all perform the blocking diode function, no need to add another one. More than 2 strings in parallel, need FUSES on each string.



How to Install a Blocking Diode

For solar panels, we recommend you put one blocking diode on each solar panel, inside an ABS project box. The diode needs to have a voltage and amperage rating above that of the panel. Example: If you have two 175 watt panels each at 42 volts, ...



What is a blocking diode?

Blocking diodes placed at the head of separate series wired strings in high voltage systems can perform yet another function during daylight conditions. If one string be comes severely shaded, or if there is a short circuit in one of the modules, the blocking diode prevents the other strings from loosing current backwards down the shaded or damaged string.



Mismatch Effects in Arrays

Bypass diodes in paralleled modules. There are typically two bypass diodes in each 36 cell module. In addition to the use of by-pass diodes to prevent mismatch losses, an additional ...



Bypass Diodes in Solar Panels

The blocking diodes and bypass diodes are physically same, but their functionality is different. Blocking diodes are also called as series diodes or isolation diodes. For each parallel brach of solar panels we will use a single blocking diode. Type and size of the

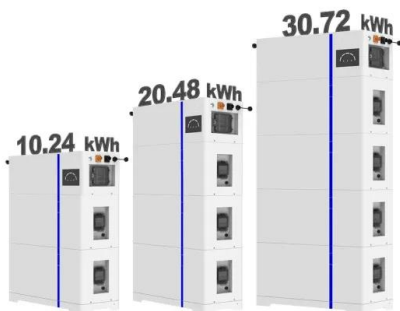


Are bypass diodes in low voltage solar panels with parallel cells

I have 5 solar cells, ~3W ~3.3v 900mA each, a total ~15W, connected in parallel. Considering the low voltage and current involved, do I still need a diode attached to each cell? Will I still risk damage if one or more cell are shadowed or will I just risk power drop?



ESS



Blocking Diode

30 ?· Blocking diodes are used to keep batteries from releasing in reverse through the solar panel boards during the evening. Current streams from high to low voltage, so on a bright day, ...



Blocking and Bypass diode in PV installations

Parallel connected solar panels must each have their own Blocking Diode mounted. The Rutland 1200 charging regulator has separate electronics with a built-in diode for the solar cells and therefore there is no need for an external Blocking Diode.



51.2V 300AH



BLOCKING DIODES AND BYPASS DIODES IN SOLAR PANELS AND SOLAR ...

If you have multiple parallel strings of solar panels that get shaded at different times, a blocking diode in series will help prevent the power from the sunny string being forced back up through

What is the use of diode in solar panel?

Function: Blocking diodes are typically used in solar panel arrays to prevent reverse current flow from the battery back to the solar panels during the night or periods of low sunlight. Usage : These diodes are often used in off-grid solar systems with battery storage to ensure that energy stored in the batteries doesn't discharge back through the panels.



Parallel solar panels

I am mounting two 100w panels on an arch and having researched the advantages and disadvantages of both series and parallel connections I am leaning towards a parallel connection due to potential shading from the mast/boom etc. across one panel at a time. The cable runs from the panels to the



Is bypass diodes useful in parallel panel setup

I think in my setup, 75wx3 in parallel, the bypass diodes are not useful anyway. Most popular panels, like 100w Renogy has 2 bypass diodes in junction box, if a panel is partially and baded shaded, it would lose half of it's output voltage even with a bypass diode



INTEGRATED DESIGN

EASY TO TRANSPORT AND INSTALL,
FLEXIBLE DEPLOYMENT



Blocking Diode

Installation Guidelines Anastasios Kyritsis, Stathis Tselepis, in McEvoy's Handbook of Photovoltaics (Third Edition), 20185.8 Blocking diodes Blocking diodes are sometimes specified in a PV array to prevent reverse currents; generally they should not be seen as a substitute for an overcurrent protective device, unless local country requirements permit this.

Shading and Serial vs Parallel with modern solar panels with ...

It is generally accepted that if you have shading on some of the solar panels, it is better to put them in parallel so the shaded panels don't impact the unshaded panels. However, with modern panels that have two or 3 bypass diodes and MPPT controllers, is parallel



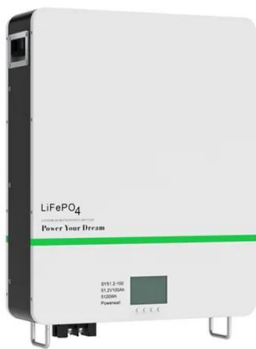
Solar Panel Shading Problems & Solutions

Shading on solar panels often results in a significant decline in performance. Bypass diodes are used to mitigate the effects of shading, but their failure can exacerbate the issue, leading to potential damage to the solar panels. In this article, we'll delve into the challenges posed by solar panel



Modelling series and parallel combinations of mismatched solar ...

Bypass diodes can help in series arrays with temporary mismatch due to shading, but they are not a solution to long-term mismatch. For parallel connection, simulations ...



Bypass Diodes

A bypass diode is connected in parallel, but with opposite polarity, to a solar cell as shown below. Under normal operation, each solar cell will be forward biased and therefore the bypass diode ...

Fuse or diode or both for solar panels in parallel

I am installing a bunch of panels in parallel. For simplicity let's just say I'm installing 10 100 Watt single panels in parallel. It is my understanding that I need a fuse between each parallel panel to prevent back-feeding a panel just in ...



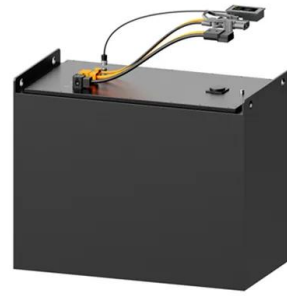
Photovoltaics in the shade: one bypass diode per solar cell ...

This paper presents simulations and experiments showing that a new generation of bypass diodes (BPDs) can be used, up to 1 BPD per cell, to improve the shading tolerance ...



Diodes on Solar Panels: How They Work and Why They Matter?

Blocking diodes are used in parallel-connected solar panels to prevent the high voltage from one panel from damaging the other. They ensure that the current flows in one direction only, preventing damage to the solar panel's cells.



Solar PV strings in parallel, blocking diodes or not.

If we have one string of 10 PV panels due east and one string of 10 PV panels due west, connected in parallel, with blocking diodes, and it is 10am, I would expect that the east facing string will be outputting at basically full power (say 350 Volts and 8 Amps

Are blocking diodes really needed for solar panels in parallel?

If one connects two technically identical solar panels in parallel (to increase current), many sources suggest to put each of the panels in series with a Schottky diode before joining these branches together in parallel.



Photo by [solarpanels.com](#)



[Blocking diode with parallel solar panels.](#)

I'm looking for a sanity check here. The situation is multiple parallel solar panels (4, to be exact) feeding a single MPPT charge controller. The panels are 60V Vmp, 6A Isc, and battery voltage 24V. I'm no expert in this but if there's a blocking diode already it fixes



How to Wire Two or More Solar Panels in Parallel

How to wire in parallel both identical and different solar panels, what happens to the panels in case of shading, how to optimize the system, what is the function of the blocking diode and ...

FLEXIBLE SETTING OF MULTIPLE WORKING MODES



wiring

In a residential solar array, bypass diodes are used when panels are in series to prevent a shaded panel from effectively becoming a large resistor. Blocking diodes prevent current from going back into a panel (or series of panels) in parallel with a load or other panel series.

Analyze the solar panel bypass diode and the thermal ...

6. Blocking diodes and bypass diodes The physical structure is the same, but the functions are different. Blocking diodes are also known as series diodes or isolation diodes. For each solar panel connected in parallel, a ...



Contact Us

For catalog requests, pricing, or partnerships, please visit:
<https://vdbconstruction.co.za>