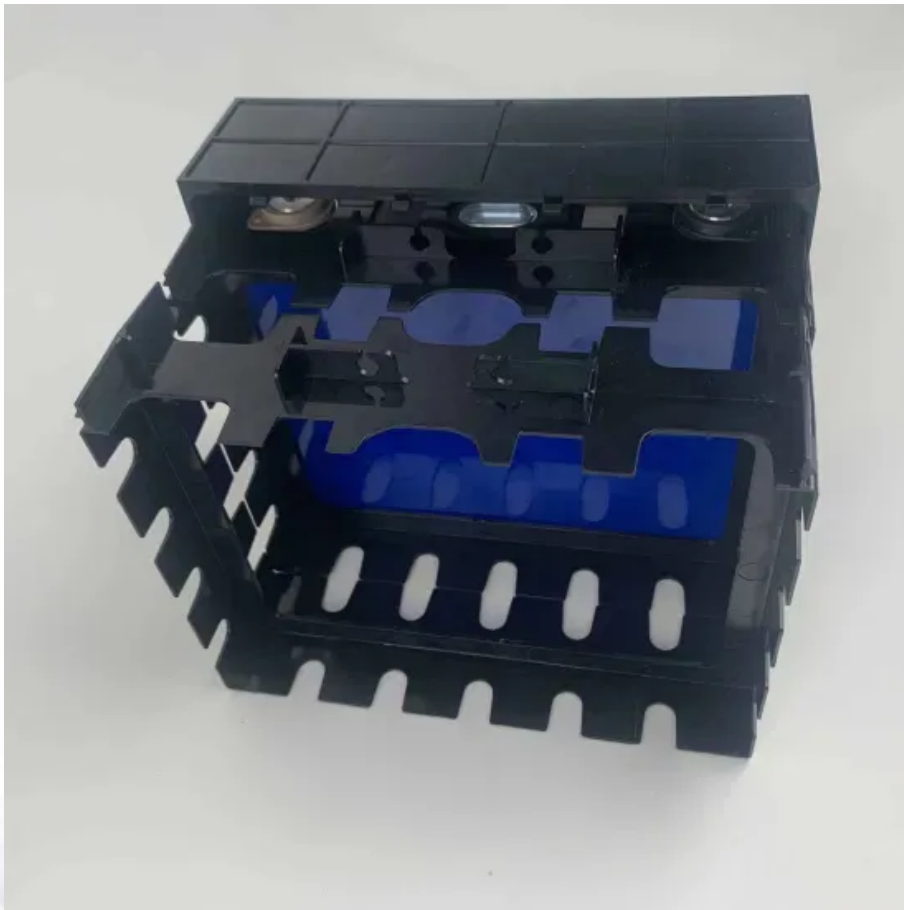


# **Can photovoltaic panels be connected in series or in parallel with an inverter**





## Overview

---

When connecting solar panels to an inverter, understanding the wiring configurations is crucial. The two primary methods are series connections and parallel connections. Are solar panels in series or parallel?

There are two options for connecting numerous solar panels in a system: series and parallel. This blog aims to explain why wire solar panels are in series or parallel, compare their differences, pros, and cons, and discuss which connection is the most beneficial to use based on your circumstances.

What is the difference between a series and a parallel solar inverter?

**Constant Voltage:** Unlike series connections, you can add additional PV panels without increasing the voltage. This makes parallel connections invaluable in applications that require 12V power input, like many motorhome and recreational vehicle systems. Similarly, solar inverters have a maximum voltage capacity.

Are solar panels connected in series?

When you connect solar panels in series, the total output current of the solar array is the same as the current passing through a single panel, while the total output voltage is a sum of the voltage drops on each solar panel. The latter is only valid provided that the panels connected are of the same type and power rating.

Can a solar inverter be connected in parallel?

Inverters are also limited by amperage, which you can overcome by connecting your solar panels in parallel. Although there are exceptions, strictly parallel connections are typically used in smaller, more basic systems and with PWM (pulse width modulation) controllers.

Why do solar panels need to be connected in parallel?

Connecting solar panels in parallel is just the opposite of series connection



and is used to increase the total output current of the array, and hence the total output power while keeping the same voltage. 'The same voltage' is the system voltage which for off-grid solar panels systems is usually as low as either 6V or 12V.

Can a solar inverter & charge controller be connected parallel?

Less power is lost transmitting electricity over distances to your solar inverter or charge controller through a series connection. Though the savings are unlikely to be substantial, parallel connections require thicker gauge wiring. Series connections may cost slightly less to wire the same number of panels.



## Can photovoltaic panels be connected in series or in parallel with a



### Connecting Solar Panels in Series or in Parallel: Which ...

Yes, you can wire solar panels in series or parallel. In some cases, you can even wire solar panels in both series and parallel simultaneously. For example, if you have two panels with 12V each, wire them in series to ...

### Should Solar Panels Be Connected In Series or Parallel?

Series vs. Parallel Connections: A Comparison. Series Connections: How It Works: In a series connection, solar panels are connected end-to-end, with the positive ...



12V 10AH



### Connecting Solar Panels in Series Vs Parallel

For example, there are 3 panels for the connection, two panels are 12V and one panel is 24V, you can link 12V together in series and go for a parallel connection to the 24V panel. Note: Be careful with wiring, take proper ...

### Wiring Solar Panels in Series vs Parallel: Which Is Better?

Just like the examples above, you can choose whether to connect your solar panels in series or in parallel. Let's go over the pros and cons of each as well as how to choose between the two. Connecting in series. ...

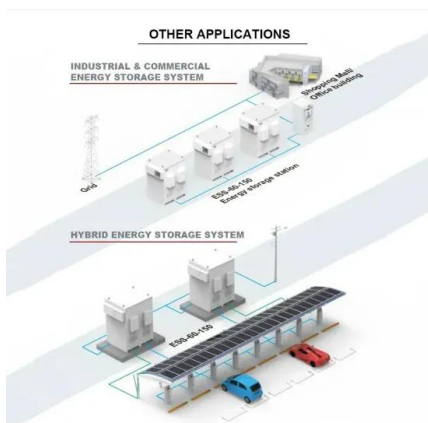


### Connecting Solar Panels in Series or in Parallel?

Step 5: Connect Solar Panels in Series or Parallel. However, using a string inverter and PV panels you connect in series can be problematic if you don't have consistent ...

### How to wire solar panels in series vs. parallel

Key takeaways. The way in which solar panels are wired determines how the system performs and what inverter the system can be paired with. When solar panels are wired in series, the positive terminal of one solar module is ...



### The Complete Guide to Solar Panel Wiring Diagrams

Connecting PV modules in series and parallel are the two basic options, but you can also combine series and parallel wiring to create a hybrid solar panel array. Some solar ...



### Understanding PV Wiring in Series, Parallel and Polystring

I hope to see in the morning The three east side panels preform well and in the afternoon the westside panels preform well. All three east west parallel PV-panel pairs will be ...



### Ultimate Guide to Solar Panels in Series vs. Parallel

Jackery portable solar panels' charging efficiency is up to 25%, which uses solar energy to its fullest potential. It is simple to connect your power station and solar panel. ...

### How to Connect Solar Panels in Series: A Simple Guide

The inverter changes the solar panel's DC into usable AC. Make sure to check its max input voltage, start voltage, max input current, and MPPT numbers when choosing. ...



### Series Vs Parallel Solar Panels Connections Explained

Solar panels are connected in series to enhance voltage and meet the inverter's minimal working requirements. When solar modules are interconnected in parallel, one module's positive terminal is connected to the ...



## Calculating Solar PV String Size - A Step-By-Step Guide

The maximum number of solar panels you can connect in a string is determined by the maximum input voltage of your inverter or charge controller. You can find this value on the inverter ...



## Commercial and Industrial ESS

Air Cooling / Liquid Cooling

- Budget Friendly Solution
- Renewable Energy Integration
- Modular Design for Flexible Expansion



## How to Wire Solar Panels in Series-Parallel Configuration?

The following solar panel and battery wiring diagram shows how to wire a four 12V Solar Panels in series-parallel connection to a 24V, 400Ah battery with an automatic inverter system. Note ...

## [Solar Panel Series vs Parallel](#) , SolarLab

First of all, let's start by saying that there are 2 ways to connect photovoltaic modules together: in series or in parallel. Do you know the main differences between the two? ...



## Wiring Solar Panels in Series vs Parallel: Which Is ...

Connecting your solar panel in series vs parallel affects current flow and is dictated by your installation's setup. Solar cells can also be arranged in parallel, where each solar panel is connected to every other panel ...



## Solar Panels: Series or Parallel Connection - Which is Best?

The inverter and charge controller's specs are critical. They set the minimum voltage and maximum current the system can handle. Making sure the solar panel output fits ...

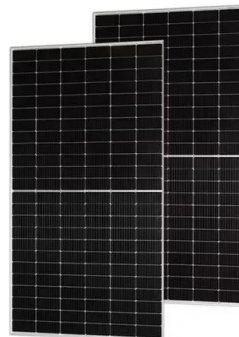


### [Can You Connect Inverters in Series?](#)

Can Two Inverters be Connected in Series?  
Inverter in Series: The thyristors in a series inverter are connected in series. It employs the class A commutation method. The ...

## Solar panel wiring basics: How to wire solar panels

For example, if you have a 5,000 W inverter, you can connect approximately 5,000 watts (or 5 kW) of solar panels. Using 300 W solar panels, you could then connect roughly 17 solar panels (5000 W / 300 W per panel). Can I connect ...



## Ultimate Guide to Solar Panels in Series vs. Parallel

There are two options for connecting numerous solar panels in a system: series and parallel. This blog aims to explain why wire solar panels are in series or parallel, compare their differences, pros, and cons, and discuss ...



## How To Size Your String? How Many Panels In A String

One can take the solar panel or module as the housing for the cells. So, a 12V solar panel/module has 36 or 72 cells that are connected in parallel or series. For increasing ...



## Connect Solar Panels To An Inverter: A Step-by-Step ...

Series connections are useful when you need to increase the voltage of your solar panel system, such as when you have a long distance between your panels and your inverter. Parallel Connection A parallel connection involves ...

## Connecting Solar Panels in Series or in Parallel?

Solar Panels Series vs Parallel: What Is The Difference? Whether you connect solar panels in series or in parallel, the total power output (in Watts) is the sum of the power ...



## Solar String Expansion. Panels Connection Parallel vs Series

String 1. Panels Connection  
TypeSeriesParallelNumber of PanelsVoc (V)Isc (A)Remove StringAdd String. Connecting Solar Panels in Strings. Connecting multiple solar ...



### Running Inverters in Parallel: A Comprehensive Guide

Yes, you can connect inverters in parallel to boost power, but it's important to do it right. Check that both inverters have similar specs, like voltage and current ratings. Plug in ...



### Series, Parallel & Series-Parallel Connection of PV Panels

How to Wire Batteries in Series-Parallel to a Solar Panel? Example: Now to understand these steps in a more mathematical way. Let's take an example of a power plant of 2 MW, in which a large number of PV modules are connected ...

### Connecting Multiple Solar Panels - Series vs. Parallel

To design a solar PV system for any household, it is necessary to consider several parameters like the available solar resource, amount of power to be supplied by the system, solar panel efficiency, autonomy of the system ...



### Should you put your solar panels in series or parallel?

If there's no risk of your solar panels being obstructed, you can increase the system's output with a series connection. The high voltage will usually result in a higher ...



## Series vs. Parallel

For this connection, a string is created by 2 or more panels in series. Then, an equal string needs to be created and paralleled. 4 panels in series needs to be parallel with another 4 panels in ...



## Understanding the series and parallel connection of solar panels

The resulting effect is to produce a solar panel system with an increased amperage rating (the sum of the individual amperages in the parallel array) while the total ...

## How Many Solar Panels Can I Connect to an Inverter? A ...

In this guide, we will explore several factors that determine how many solar panels can be connected to an inverter: Inverter Specifications: Understanding the technical ...



## How to Connect Solar Panel to Inverter for Pro Performance

Here are some commonly asked questions on how to connect solar panel to inverter. Can a 12V Inverter Be Directly Connected to a Solar Panel? Yes, a 12V inverter can ...



## How to Connect Solar Panels in Parallel and Series

Designing a series-connected solar panel system means thinking about voltages and amps. You have to match the system's total voltage with the inverter's allowed voltage range. It's key to keep the total array amperage ...



## Contact Us

---

For catalog requests, pricing, or partnerships, please visit:  
<https://vdbconstruction.co.za>