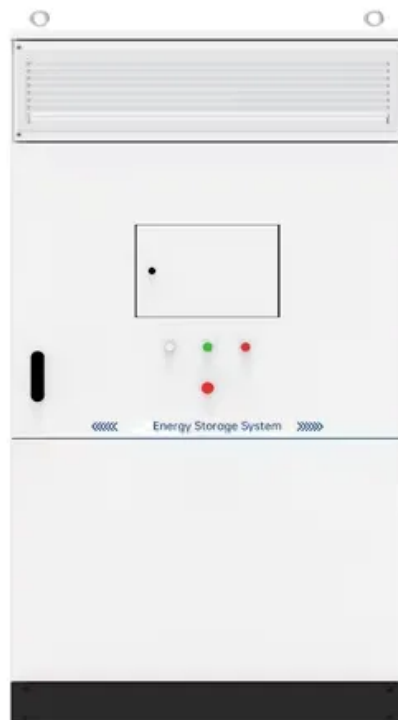


# **Can photovoltaic panels be installed on the roof at the foot of the mountain**





## Overview

---

Can solar panels be mounted on a flat roof?

For solar panels on a flat roof, mounting systems are slightly different and can include a triangle 'ballast' box to support the panels. For solar thermal panels (with cells that use the sun's heat to warm water in a house) things are a little different.

Can solar panels be installed on a roof?

"The solar panels will need to be mounted on the roof by installers who understand roofing and will need some scaffold decks to safely get the panels to the roof.

How many solar panels can be installed on a roof?

Your roof will need to be large enough to fit a suitable number of solar panels, as there's rarely much point putting just two or three panels up there. The average solar panel takes up 2m<sup>2</sup>, and your installer should leave around 40cm on each side of the array, as well as 3cm between every panel.

What angle should solar panels be installed on a roof?

Anywhere between 20 and 50 degrees will usually enable your system to produce roughly as much electricity as it could. And in the case of most rooftop solar panel installations, the angle of the solar panels is determined by the angle of the roof - so there isn't much you can do to change it.

Can a UK roof support solar panels?

As long as your roof is pitched, has enough unshaded space, and doesn't contain spray foam insulation underneath, it should be suitable for solar panels. The large majority of UK roofs are more than capable of supporting solar panels for as long as you need them to.

Do solar panels need a south-facing roof?



You don't necessarily need a south-facing roof for solar panels to work effectively. South-facing roofs do get the best sun exposure in the UK, but east or west-facing roofs can also work - panels on those sides get daylight at different times, so you'll still produce a decent amount of electricity.



## Can photovoltaic panels be installed on the roof at the foot of the m

---



### Solar Panels on Metal Roofs: A Comprehensive Guide

Panels with higher efficiency ratings can capture more sunlight, converting it into usable energy more effectively. Roof Condition. Before installing solar panels, evaluate the condition of your metal roof. If it's nearing ...

### Solar Roof Tiles in the UK: Costs, Pros + Cons in 2024

- More expensive to produce but provide greater energy generation per square foot.
- Monocrystalline solar panels' cell lifespan can be 25 - 30 years. and installation complexity. Solar panel roof tile manufacturers in the UK. As of ...



### Is Your Roof Suitable for Solar PV Panels? A ...

Installing solar PV panels on your roof can be a smart and environmentally-conscious decision, but it's essential to evaluate whether your roof is suitable for such an installation. Consider the orientation, pitch, ...

### [The Complete Guide To Rooftop Solar Mounting](#)

Pros-Reduced energy costs: Rooftop solar installations are the best way to reduce or even eliminate your electric bills over the long term.-Increase in property value: ...



### [Our Barn Roof Gets an 18-kW Solar Array](#)

The first photovoltaic panels being installed on our barn roof. The PV array is being installed on top of the standing-seam metal roof. Image Credit: All photos by Alex Wilson ...



### **Can Solar Panels Be Installed on a Flat Roof in the UK?**

However, it is still common for them to be installed on domestic properties as well. The flat roof solar panel array that is installed uses the same type of solar panel as a ...



### [The Ultimate Guide To Flat Roof Solar Panels](#)

The ideal pitch for a Solar Panel is around 30 degrees off the horizontal. Simply because this allows the panels to gain more exposure from the sun throughout the entire day. ...





## A step-by-step guide to installing solar panels

"Solar PV (photovoltaic) panels generate electricity from sunlight and will normally be installed on the roof of the building facing in the most south direction. The panels should also face as much south as possible.



### [Fixing solar panels to membrane roofs](#)

Solar panels are predominately mounted on a supporting framework. The interface between the support framework and the roof covering is critical and if not taken care of correctly can cause damage to the roof membrane and ...



## How to install photovoltaic panels on the roof

Flat roof PV systems are generally installed in the form of concrete columns and PV brackets. The investment cost is not high and the economy is better. On a horizontal roof, we can determine ...



### [How many solar panels can I fit on my roof?](#)

having now solar panels for a couple off years I can say with out doubt they are a terrific investment our bills have come down from over £1200 per year elec. and gas down to ...

**LPSB48V400H**  
48V or 51.2V





### Can You Install Solar Panels on Tile Roofs?

A preferred technique utilized to install SunPower's highly efficient solar panels on a lightweight tile roof is called an inset solar installation, sometimes referred to as a "comp-out." This process will add additional steps ...

### ESS



### Solar Panel Mounting Systems and Their Installation

Generally, roof mounted systems are less expensive than ground mounted systems, because the main structure needed to sustain the panels is the rooftop itself. This ...

### Can Solar Panels Be Installed on a Slate Roof?

Solar energy has been a leading topic in the renewable energy sector for many years. As homeowners and businesses increasingly look to reduce their carbon footprint and ...



### How Much Solar Power Can My Roof Generate? , EnergySage

In some cases, way more than you probably need. According to our calculations, the average-sized roof can produce about 21,840 kilowatt-hours (kWh) of solar ...



## Is my roof suitable for solar panels? [UK checklist]

A lower roof can stop your scaffolding's feet from reaching the ground - and you can't install scaffolding on the lower roof, as it won't be strong enough. Unfortunately, you also can't get around the issue by just putting the ...

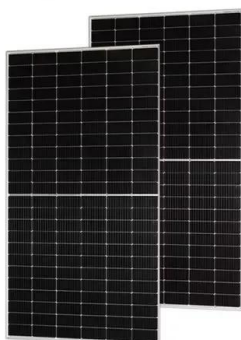


## Ultimate Guide to Photovoltaic Installation: Step-by-Step ...

Solar roof tiles are a special type of in-roof installation. They can be integrated into the existing roof cladding without any extra mounting systems. This makes for a seamless installation.

## A step-by-step guide to installing solar panels

3. Make space for the solar panel accessories (solar inverter, cables and solar batteries, if desired), for instance in a plant room. 4. Plan a day for installation. 5. Erect the scaffolding (this can be done by your supplier or by ...



## [How to Install Solar Panels on Roof](#)

So, how to install solar panels on roof? The detailed steps are given below, take a look. Step 1: Mount Installation. The first step in the solar panel installation guide is to install the mounts that will support the solar ...



## Is Your Roof Strong Enough for Solar Panels? , Paradise Energy

In the case of most rooftop solar panel installations, the angle is determined by the roof - and fortunately, most roofs in the UK are angled at roughly 30 to 50 degrees. ? Solar panels that face east or west are still ...



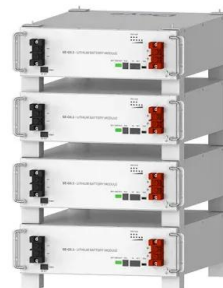
### [Solar Panel Cost Calculator UK](#)

Solar panel brackets. Solar panel inverter. Solar panel brackets. Installation i.e. labour costs of the installer. Cost of the solar battery storage system (although this is optional). ...



### [Installing Solar Panels on a Tile Roof](#)

These flat roof varieties are suitable for solar panel installation. These roofs' additional asphalt layers offer strong panel support and guard against leaks and cracks. Solar ...



**Deye Official Store** **10 years warranty**

### Can You Put Solar Panels On A Conservatory Roof?

More than 1.3 million UK households now have solar panels. A typical three-bedroom home will save up to £454 a year on its energy bill with a solar panel system. Solar ...





### How to Install Solar Panels on Roof

The first step in the solar panel installation guide is to install the mounts that will support the solar panels. These come in three primary types: pole, roof-ground, and flush ...



### Can You Install Solar Panels on Tile Roofs

Moreover, considering roof upgrades may enhance the longevity of the roof and the solar panel system. Professional roof assessment. A professional roof assessment is pivotal to determining the feasibility of solar ...

### **How close can solar panels be to the edge of the roof?**

In most cases, solar panels are required to have a minimum of 18 inches of recoil from the roof ridge and may also require a three-foot path along one of the edges. Once on the ...



### **Solar Panels on Flat Roofs: Costs, Pros & Cons (November 2024)**

Flat roof solar panel mounting is usually done with ballasts, which can also incur extra costs during purchase. Ballasts can be around £60 to £120 per kilowatt on average ...



## A Guide to Metal Roof Solar Installation , Greentech ...

Greentech Renewables has organized crucial insights to help solar installers understand the most cost-effective and safest options when working on metal roof solar installations. The following article covers various metal roof types and ...



## How Close Can Solar Panels Be To Edge Of Roof?

However, the cost of a solar panel installation can vary depending on the type and model of panels used, as well as the size of the system. Solar tax credits and other ...

## Contact Us

---

For catalog requests, pricing, or partnerships, please visit:  
<https://vdbconstruction.co.za>