

# **Can we build solar power generation in landslide pits**





## Overview

---

Why is landslide susceptibility of photovoltaic power project important?

Photovoltaic power generation also involves engineering construction processes, which disturb the slope in the natural state and destroy the original stable state. Therefore, an assessment of the landslide susceptibility of the photovoltaic power project land is significant for facilitating reasonable planning and management of the project.

Does a 30 year old photovoltaic plant occupy less land?

A 30-year old photovoltaic plant is seen to occupy ~15% less land than a coal power plant of the same age. As the age of the power plant increases, the land use intensity of photovoltaic power becomes significantly smaller than that for coal power.

Are construction projects Prone to landslide disasters?

However, engineering constructions in mountainous regions are susceptible to landslide disasters. Therefore, the assessment of landslide disaster susceptibility is indispensable for disaster prevention and risk management in construction projects.

Can a solar power plant be built on a slope?

For example, mitigation plans for storm flow surface water were required for the 400 MW Ivanpah power plant in California , and the U.S. BLM and DOE require . If solar power plants are built on slopes, access roads between the panels could produce erosion similar to that seen in vineyards .

Should geological landslides be protected during construction and operation?

Special attention should be paid to the protection of geological landslides during construction and operation. By comparing factors, it is found that the presence of a factor with high weight or factors without high weight is not enough for areas with occasional landslides to be classified as moderate- or



high-susceptibility zones.

Do large-scale solar power plants have environmental issues?

Large-scale solar power plants are being developed at a rapid rate, and are setting up to use thousands or millions of acres of land globally. The environmental issues related to the installation and operation phases of such facilities have not, so far, been addressed comprehensively in the literature.



## Can we build solar power generation in landslide pits

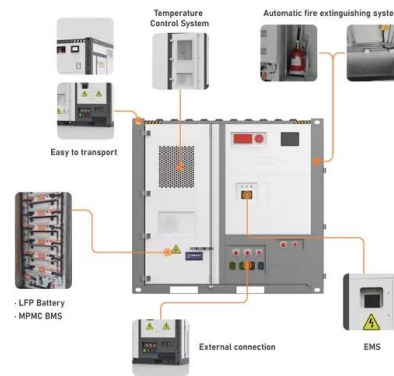


### Earthing in electrical network

Hi, I don't think No. of earth pit depends on the KW values of connected load, the No. is totally depends on the resistivity of soil, for generating Stations generally we required ...

### Fire pits, lanterns, generators: Life in no-power landslide area

Life without power or gas in Portuguese Bend landslide area. By Susan Valot Sep. 18, At night, the solar lanterns come out, providing just enough light to walk around ...



### Case Study of Solar Photovoltaic Power-Plant Site Selection for

Using location (e.g., highways, lakes, rivers), monthly solar power output, and orographic (e.g., slope) data, suitable regions are identified with the geo-spatial analysis; then, ...

### Lyrics for Generation Landslide by Alice Cooper

I can never be stated enough how a producer must be the final member of the band in the control booth and a good producer can make an average album good and a great or the right ...



### Large-scale photovoltaic solar farms in the Sahara affect solar power

They can worsen the conditions for seasonal solar power generation in many other regions where an energy transition to solar power is being heavily promoted, such as the ...



### Landslide risk on photovoltaic power stations under ...

To achieve the net-zero carbon dioxide emission goals, the number of solar photovoltaic (PV) power stations (PPSs) installed worldwide has increased. An increasing number of PPSs are exposed to natural hazards, ...



### Solar energy--A look into power generation, challenges, and a solar ...

The most exciting possibility for solar energy is satellite power station that will be transmitting electrical energy from the solar panels in space to Earth via microwave beams.



LFP 280Ah C&I



### Going from coal pits to floating solar plants

The Fraunhofer ISE analyses the potential of solar power plants located on pit lakes in former lignite mines. Assessing the potential for electricity generation. About 500 pit ...



### Mining Raw Materials for Solar Panels: Problems and Solutions

As described above, there are many challenges associated with the materials mining and manufacturing processes needed to make solar panels. But effective policy and ...

### Landslide Susceptibility Assessment Using the Analytic ...

Photovoltaic power generation is representative of generating energy from renewable resources. The installed capacity and the output of photovoltaic power generation in China have been increasing every year .



### Concentrated solar power is an old technology making a ...

At the moment, the power we use at night mostly comes from coal- and gas-fired generation, said Dominic Zaal, director of the Australian Solar Thermal Research Institute ...



## PIT Becomes First Airport to Power Itself with Natural Gas, Solar

The power generated at PIT is the primary supply for the entire airport, including the terminals, airfield, Hyatt hotel and Sunoco. "We talk a lot about the natural resources we ...

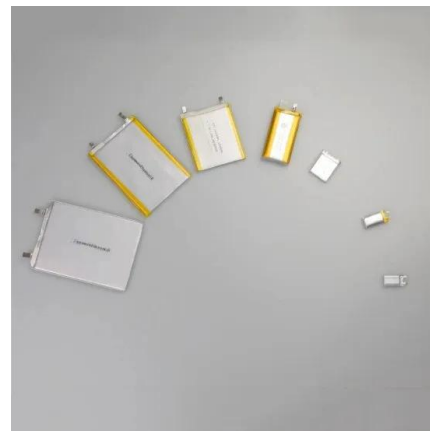


## (PDF) Landslide risk on photovoltaic power stations ...

In this study, we assessed the landslide risk for PPSs by combining statistical susceptibility and physical-based hazard analyses under three representative concentration pathways (RCPs).

## Ultimate Pit Limit Optimization Method with ...

The ecological impacts of mining and the instability of slopes are the key factors restricting the safe, efficient, and low-carbon production of open-pit mines. This study focused on the ultimate pit limit (UPL) optimization ...



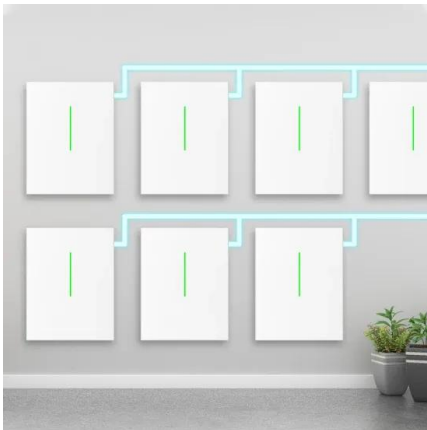
## (PDF) Landslide mechanism and stability of an open-pit slope: The

the landslides at the Shengli open-pit coal mine (Zhang et al., We can use the sliding slope to draw a free body diagram and perform a force analysis, as shown in Fig. 5.



### Step-by-Step Guide on How to Build Your Own Solar System

Arguably, the main advantage of DIY solar panels is the significant cost savings on their installation. According to the Solar Energy Industries Association (SEIA) report, ...



### Ground Rules: The Critical Importance of Earthing in Solar Energy ...

Welcome to the electrifying world of solar energy, where the sun isn't just a celestial body, but a powerhouse fueling our journey towards a sustainable future. But, as we ...

### 80% of Japan's 47 prefectures have problems with ...

A Mainichi Shimbun survey found that of all 47 prefectures in Japan, 80% have problems with solar power energy in one way or another. Known as the "sunny land" because of its many fair-weather



### All About 1 MW Solar Power Plant: Price, Specifications & More

High-capacity systems of over 100kW are called Solar Power Stations, Energy Generating Stations, or Ground Mounted Solar Power Plants. A 1MW solar power plant of 1 ...





### Landslide Druid Endgame Build Guide

To summarize all the details that follow: the passives we choose enable us to deal more damage by 1) increasing our Spirit generation so we can cast Earth Spike and Landslide more often ...



### **Kinetic characteristics and runout behavior of the rainfall-induced**

Landslides 20 o (2023) 1907 The solar power generation facility which was completed in 2019 has 200 large panels and 999.18 kW power generation capacity on 8,0100 m 2 in the study area. ...

### **Landslide susceptibility analysis of photovoltaic power stations in**

Photovoltaic power generation depends on the solar irradiance, particularly the downward surface shortwave radiation We selected environmental landslide factors based ...



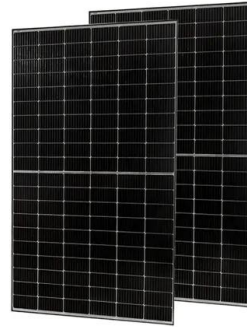
### **Fire in the holes: Transforming mined out lands into ...**

A new study from the European Union's Joint Research Centre (JRC) entitled Solar Photovoltaic Electricity Generation: A Lifeline for the European Coal Regions in Transition suggests that if solar PV systems were ...



## Assessment of Landslide Risk Near Mountain Power Generation ...

Therefore, in this study, the risk of installed solar power generation facilities was evaluated based on the precipitation in a year and rainy season only, and topographical characteristics. The ...



### [The solar discs that could power Earth](#)

Ultimately, we need a way to store energy on a large scale before we can make the switch to renewable sources. Benefits of space A possible way around this would be to generate solar energy in space.

### **(PDF) Land Use Requirements of Solar and Wind ...**

PDF , This work reviews over 100 academic studies and U.S. government reports on the land use impacts of solar and wind power. , Find, read and cite all the research you need on ResearchGate



## Contact Us

---

For catalog requests, pricing, or partnerships, please visit:  
<https://vdbconstruction.co.za>