

# **Composition of the combiner box of a photovoltaic power station**





## Overview

---

What is a combiner box in a photovoltaic system?

In a photovoltaic system, a combiner box acts as a central hub that consolidates and manages the direct current (DC) output of multiple solar panels. Its main purpose is to simplify the wiring structure, enhance system security and simplify maintenance procedures.

How do I choose a photovoltaic (PV) combiner box?

When selecting a photovoltaic (PV) combiner box, several key parameters must be considered to ensure the efficient operation and safety stability of the PV power station.

Why should you choose a PV combiner box?

Leading Manufacturer Protects Solar Power Safety. The selection of a PV combiner box is a critical link to ensuring the efficient and safe operation of a PV power station. It involves considering multiple parameters and factors, including input power parameters, input voltage parameters, protection level, temperature range, and reliability.

What is the input power parameter of a PV combiner box?

The input power parameter is one of the key considerations in the selection process. It refers to the maximum input power that the PV combiner box can handle. When selecting, it's necessary to determine the input power parameter of the PV combiner box based on the total installed capacity and expected power generation of the PV power station.

Why are combiner boxes important for solar energy systems?

Compliance not only ensures system security but also facilitates regulatory approval and certification. Within the intricacies of solar energy systems, combiner boxes are a testament to the careful planning and engineering required to effectively harness the power of the sun.



## Why do solar panels need a combination box?

Efficiency is the hallmark of any successful solar installation. Combiner boxes help improve the overall efficiency of the photovoltaic system by optimizing the wiring structure and integrating the DC output. Combiner boxes are designed to accommodate the inherent scalability and flexibility of solar installations.



## Composition of the combiner box of a photovoltaic power station

---

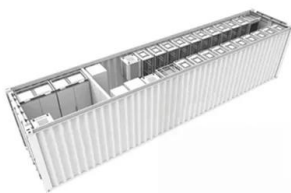


### [What is a PV Combiner Box?](#)

The convergence box means that the user can connect a certain number of PV cells with the same specifications in series to form a PV series, and then connect a number of PV series in parallel to the PV convergence box, after ...

### The composition of solar photovoltaic power ...

It mainly consists of solar cell modules (or square arrays), energy storage batteries (groups), photovoltaic controllers, photovoltaic inverters (used when AC power needs to be output), etc., and DC combiner boxes., ...



### [How Does a PV Combiner Box Work?](#)

The working principle of the PV combiner box can be imaginatively understood as the "current collection station", and its main task is to unify the management and distribution of the power generated by the ...

### What is a PV Combiner Box?-Most detailed introduction

A PV combiner box is a critical component in solar photovoltaic (PV) systems, designed to consolidate the electrical output from multiple solar panel strings. Understanding ...



### The Ultimate Guide to Solar Combiner Boxes: From Basics to ...

Solar combiner boxes are integral to solar power systems, serving to combine the outputs of multiple solar panel strings into a single output for the inverter. The ...

### Micro inverter combiner box: functions, purchase guide and ...

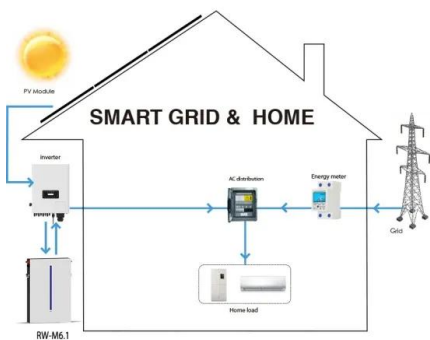
Regularly monitor the running status of the micro inverter combiner box: you can use a multimeter to connect the probe to the corresponding terminal of the micro inverter ...

↑ ESS



### Solar String Combiner Boxes

Solar string combiners improve safety of solar panels and the entire photovoltaic plant. Solar combiner box, also called DC switchboard, as plug and play solution factory-assembled with the monitoring device, fuse disconnectors with fuse ...





## The Importance of Combiner Boxes in Solar Energy Installations

Solar power is a rapidly growing industry, and as the demand for renewable energy continues to rise, the efficiency and reliability of solar power systems are critical. Combiner boxes play a ...



## Exploring the Significance and Functionality of Solar Combiner Boxes

The role of solar combiner boxes in solar energy systems. Behind every successful solar PV installation lies a network of components working in harmony, with solar ...

## Photovoltaic AC combiner box detailed explanation

For a huge photovoltaic power station, the amount of the combiner box only accounts for 1%, but 100% of the current passes through it. During commissioning, operation and maintenance, ...



## System composition of photovoltaic power station

The entire photovoltaic station can be regarded as an independent system, which basically consists of a solar cell array, a combiner box, a DC distribution cabinet, an ...



## What Is A Photovoltaic Combiner Box And Its Function

The definition and composition of the photovoltaic combiner box. In order to facilitate monitoring of the working status of the entire power station, a data acquisition module ...



## What Is a Combiner Box as Used in PV Systems?

The Photovoltaic Combiner Box (PV Combiner Box) is usually also called DC Combiner Box. In a photovoltaic system, the PV Combiner Box is an electrical device used to ...

## TECHNICAL SPECIFICATIONS OF ON-GRID SOLAR PV POWER ...

appropriate DC and AC Cables, Array Junction Boxes (AJB) / String Combiner Boxes (SCB), AC and DC Distribution Box, Lightning Arrester, Earthing Systems, Net meter, etc. PV modules ...



## [Single Line Diagram \(SLD\) of Solar Power Plant](#)

Example SLD of a Solar Power Plant. Here is a simple SLD illustration of a solar power plant: For an ideal solar panel SLD: - At the beginning, there is a representation of the ...



## String Monitoring Unit for Megawatt Solar Power Plants

Figure 1 shows the configuration of a megawatt solar power plant, equipped with the string monitoring unit. At megawatt solar power plants, strings are integrated by a combiner box, ...



### [Solar Photovoltaic \(PV\) System Components](#)

The photovoltaic AC combiner box is used in a photovoltaic power generation system with string inverters and is installed between the AC output side of the inverter and the grid connection point/load. It is internally equipped with input ...

### [System Composition Of Solar Power Plant](#)

The solar power station system consists of solar cell array, combiner box, DC power distribution cabinet, grid-connected inverter, AC power distribution cabinet, and booster. Solar panel The ...



### [A Comprehensive Guide to Combiner Boxes in ...](#)

Combiner boxes play an important role in photovoltaic (PV) installations. This comprehensive guide aims to shed light on the importance, functions, types and best practices of combiner boxes, unlocking the mystery behind their role in ...



### Ultimate Guide to Choosing Photovoltaic DC ...

When diving into the world of solar energy, the photovoltaic DC combiner box stands out as a pivotal component. Acting as the heart of the photovoltaic array, it's the power source for the entire photovoltaic station. The ...



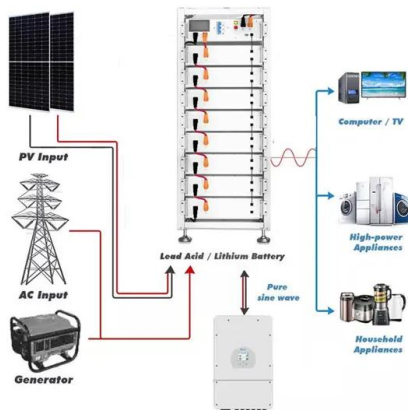
### How does the Single Line Diagram (SLD) of a Solar ...

Example SLD of a Solar Power Plant. Here is a simple SLD illustration of a solar power plant: For an ideal solar panel SLD: - At the beginning, there is a representation of the solar panels (PV modules). - DC ...



### What is DC PV Solar Combiner Box

The Solar combiner box in the photovoltaic power generation system is a wiring device that ensures orderly connection and convergence of photovoltaic modules. This device can ensure that the photovoltaic system is ...



### Ultimate Guide to Choosing Photovoltaic DC Combiner ...

Choosing the right components for a photovoltaic DC combiner box is crucial for the efficiency and reliability of the entire solar power system. By understanding the role and specifications of each component, you can ensure ...



### Solar combiner box: definition, core functions and working principle

In the solar power sector, the combiner box plays a crucial role. It not only consolidates the current output from multiple solar panels but also provides protection and ...



### [What is a Combiner Box -A Complete Guide](#)

Maintaining a combiner box is necessary for the proper function of the system. If you ignore maintenance, its working will be affected. The following tips will help you maintain your combiner box. Regular Cleaning can ...

### [What is a PV Combiner Box?-Most detailed ...](#)

A PV combiner box, also known simply as a combiner box, is an essential component in photovoltaic (PV) solar power systems. It serves as a central point where the electrical outputs from multiple solar panel strings are ...



### **What is the composition of photovoltaic grid-connected power ...**

For the overall design scheme, a lightning protection combiner box of model PVS-16M is selected. Each combiner box has 16 channels of DC input, and each channel has ...



## Contact Us

---

For catalog requests, pricing, or partnerships, please visit:  
<https://vdbconstruction.co.za>