

District Solar Power Generation Demolition





Overview

Could a solar farm be connected to Drakelow Power Station?

This site, if approved, would be connected to the Drakelow Power Station site by underground cabling. A government planning inspector dismissed plans for a 173-acre solar farm stretching between Lullington and Coton in the Elms, which had previously been rejected by the district council, in July last year.

Could a 82-acre solar farm be built on a former power station?

Early plans to build an 82-acre solar farm on the site of a former Derbyshire power station have been submitted. Drakelow Power Station closed in 2003 and there have been various plans for the site since then, including building a gas-fired power station. The latest plan would see much of the site covered in solar panels.

Will a 410 acre solar farm be built in South Derbyshire?

It is the third large solar farm scheme pitched for the same area of South Derbyshire within the last 12 months. A formal application by BayWa r.e. UK for a 410-acre solar farm stretching from Walton to Rosliston was submitted to the Planning Inspectorate on Thursday.

Will Lullington & Coton have a solar farm?

A government planning inspector dismissed plans for a 173-acre solar farm stretching between Lullington and Coton in the Elms, which had previously been rejected by the district council, in July last year.

What happened to Drakelow Power Station?

Drakelow Power Station was closed in 2003 with the buildings at the site demolished in 2006. Since then various energy schemes have been brought forward, including a gas-fired power station, a biomass-fired power station, and an energy-from-waste facility.



Could a solar farm be coming to Burton-upon-Trent?

The cooling towers at Drakelow Power Station used to be a local landmark (Credit: Alan Slater / CC BY-SA 2.0) Plans for a solar farm and battery energy storage system in Burton-upon-Trent could be brought forward by energy giant E.ON.



District Solar Power Generation Demolition

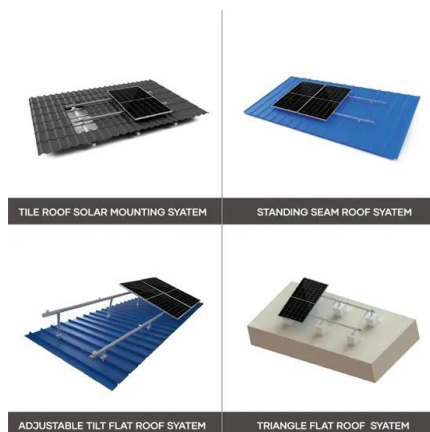


Bihar's Banka District Goes Green with 50 MW Solar Power ...

Bihar took a significant step towards renewable energy by commissioning a new 50 MW solar power plant in Banka district, Sanjeev Hans highlighted the urgency in ...

Proposal to build solar farm on Drakelow Power Station site

A government planning inspector dismissed plans for a 173-acre solar farm stretching between Lullington and Coton in the Elms, which had previously been rejected by the district council, in



Subsystems of the solar power tower and the cooling district ...

In addition, a comparison is made between solar thermal power plants and PV power generation plants. Based on published studies, PV-based systems are more suitable for small-scale ...

Power Down: Drake demolition ushering in a new ...

The \$20 million demolition of the decommissioned coal power plant remains on schedule to be completed by the end of 2024. it will have a power generation portfolio composed of 33% wind, 26%



Enhancing and Optimising Solar Power Forecasting in Dhar District ...

Data Description. Data obtained from a solar power plant located in Dhar, Madhya Pradesh, India, for the amorphous silicon technology shown in Fig. 3(a). The total ...

Electric Power Generation , Services , Burns & McDonnell

Reliable power generation is critical to the energy transition. Varied fuel sources and emerging technology implementations can build reliability into a generation fleet, protecting against ...



Fossil Fuel Power Plant Demolition: Key Pre-Demolition ...

As existing electricity generation infrastructure matures, generation system owners are looking to the future for newer and greener technologies to meet consumption ...



Proposal to build solar farm on Drakelow Power Station site

A government planning inspector dismissed plans for a 173-acre solar farm stretching between Lullington and Coton in the Elms, which had previously been rejected by ...



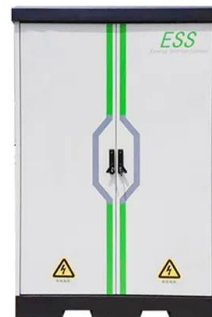
The Impact of Renewable Power Generation on the Profitability of Solar

The intermittency of power generation by wind and photovoltaic results in volatile spot prices at the power exchanges. As a consequence amendments in the operational ...



The end is nigh for landmark power station as ...

Developers behind plans to demolish Ratcliffe-on-Soar Power Station say the flattening of the major structure will be "managed and controlled" to protect the environment.



Optimizing solar full-spectrum integration in a methanol-driven

This paper focuses on the application of solar-assisted district energy systems to meet diverse building energy requirements. 2016)) are harnessed for solar power ...





[Little Bear Solar Project Final EIR](#)

1,288 acres of Westlands Water District-owned lands in unincorporated Fresno County adjacent to but that are not allowed as a matter of right within a zoning district. PV ...

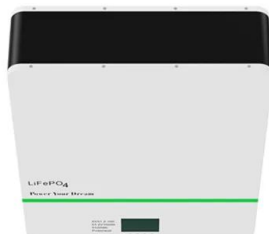


[Kadapa Ultra Mega Solar Park](#)

The project is being implemented by the Andhra Pradesh Solar Power Corporation Private Limited (APSPCL), a joint venture of Solar Energy Corporation of India (SECI), Andhra Pradesh Power ...

Exergy-based optimization constraints for solar PVT panels and district ...

Nearly-avoidable CO 2 emissions: ?CO 2. The concept of nearly-avoidable CO 2 emissions applies to all applications, even if 100% renewable energy sources are utilized in ...



Newark: Concerns over scale of solar farm development

A proposed solar farm in Nottinghamshire that could become the biggest in the UK has raised concerns. Planned for an area north-west of Newark, the Great North Road Solar Park has the ...



Distributed Generation Resources

DG Systems approved under the Solar Power Program before July 1, 2015, are subject to closed Rider Nos. 3 and 4. This analysis examines existing infrastructure and ED3's ability to take ...



Public Agenda Item No.3.1 DERBYSHIRE COUNTY COUNCIL ...

o A solar farm, approximately 275m to the west of the proposed development.
o A gas turbine power station, approximately 500m to the south-west of the proposed development ...

End of coal power sparks new horizons for Rugeley (from ENGIE)

Rugeley B Power Station which was opened in 1970, ceased generation in 2016. In 2018 ENGIE announced plans to transform the former 1 GW coal fired station into an ...



Demolition

A demolition permit is required for the moving or removal of a building or structure. Review the demolition permit process. Downtown Event & Entertainment District. Journey to the District; ...



DCO decision for 400MW solar NSIP expected in May ...

3 ???· Image: Boom Power. UK-based solar developer Boom Power has announced the closure of the examination period for its 400MW East Yorkshire Solar Farm. A development consent order (DCO) decision will be reached by ...



Rugeley Power Station demolition marks the end of an ...

Demolition of the cooling tower structures marks the start of the redevelopment phase and a new chapter for the town - moving from coal-based technology to one of the lowest carbon mixed use developments of its size in ...

Eastern Municipal Water District's Solar Initiative

Dan Howell: Phases 1 and 2 were capital expenditures-- capital projects that the district built, paid for, and owned from the beginning. Our solar phase 3 projects are being installed under a ...



District Dhule, Government of Maharashtra , Major Projects of Solar ...

ABOUT DISTRICT. The Old West Khandesh is the district Dhule today. This district is situated at the foot of the Satpuda hill. The mountain range of Sahyadri has reached ...



Electricity Generation from Slabs of Construction and ...

The objective of this study is to perform a diagnosis of the Construction Waste (CW) generation at sites in the city of Recife, Brazil, and obtain indicators to improve waste management.

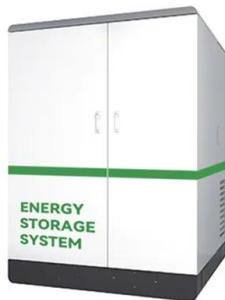


Concentrating Solar Collectors for District Heating Applications

A survey of existing systems identified three main applications of concentrating solar collectors within the district heating sector: (1) direct district heat production using ...

Cooling Towers At Rugeley Power Station Demolished

Rugeley B Power Station which was opened in 1970, ceased generation in 2016. In 2018 ENGIE announced plans to transform the former 1 GW coal fired station into an ...



RWE submits planning application for data centre ...

During the demolition phase, RWE has formulated a broad redevelopment strategy for the site, working with both the Vale of White Horse District Council and Oxfordshire Country Council. The strategy reserves land ...



Contact Us

For catalog requests, pricing, or partnerships, please visit:
<https://vdbconstruction.co.za>