

# **Do photovoltaic panels have a positive and negative side**





## Overview

---

The article explains how to determine the positive and negative terminals of a solar panel, crucial for proper installation to avoid energy wastage. Methods include examining the diode and using a voltmeter to measure voltage. It also discusses checking solar panel polarity and fixing reverse polarity issues.

The polarity of the solar panel is a crucial factor to consider during installation. If your system is not configured properly, you could end up wasting energy and have to buy more power from the grid, which hurts your wallet.

Most modern high-power solar modules are made with wire leads that have MC4 connectors on the ends. They use these MC4 connectors because.

Struggling to understand how solar + storage systems actually work?

Looking to build or buy your own solar power system one day but not sure what.

Yes, solar panels do have polarity. Polarity relates to the positive and negative terminals of the panel. Do solar panels have positive and negative terminals?

Solar panels feature positive and negative terminals. Wiring solar panels in series means wiring the positive terminal of a module to the negative of the following, and so on for the whole string. This wiring type increases the output voltage, which can be measured at the available terminals.

How do you know if a solar panel is positive or negative?

The positive and negative terminals of the panel are located at either end of this series. One of the easiest ways to identify the positive and negative terminals of a solar panel is to look for the markings on the back of the panel itself. Most panels will have a label or sticker that indicates which end is positive and which end is negative.

Do solar panels have polarity?

Yes, solar panels do have polarity. Polarity relates to the positive and negative terminals of the panel. Accurately recognizing this polarity during the



connection of solar panels is crucial to ensure their optimal operation and to avert potential damage. This underscores the significance of polarity for solar panels.

Are solar panels energy negative?

Some solar panels are energy negative, meaning they take in more electrical power than they generate. This is good because it allows you to store excess energy from your system for later use or sale back onto the grid - this makes switching over to renewable sources of electricity easier!.

How do you know if a solar panel polarity is correct?

The positive lead is on the negative terminal and the negative lead is on the positive. If the voltage is a positive number, then the polarities are correct. Either of the results tells you the polarities of the terminals. What Are The Different Solar Panel Connectors?

.

What does reverse polarity mean on a solar panel?

Solar panel, battery, charge controller and inverter. What is Reverse Polarity?

If you get two different readings, one positive and one negative, your system has reverse polarity. Reverse polarity can be caused by incorrect wiring or damaged equipment.



## Do photovoltaic panels have a positive and negative side

---



### How Solar Panels Work

All solar panels have positive and negative electric terminals, so after the electrons carry the electric current out of the solar panel and into a battery or an inverter, a fresh supply of ...

### Are Solar Panels Beneficial for the Environment?

By ensuring responsible handling of these materials, we can continue to enjoy the benefits of solar energy while minimising its environmental impact. 4) Life-Cycle Global ...



### Solar panel wiring basics: How to wire solar panels

When stringing in series, the wire from the positive terminal of one solar panel is connected to the negative terminal of the next panel and so on. When stringing panels in series, each additional ...

### How to find positive and negative terminal of solar panel?

The positive terminal of a solar panel is usually marked with a plus sign, while the negative terminal is marked with a minus sign. These markings may be located on the ...



- Voltage range: 691.2-947.2V
- >6000 cycles (100% DOD)
- Rated battery capacity: 216KWh (customizable)
- EMS communications: 4G/CAN/RS485

### The Pros and Cons Of Solar Energy (2024 Guide) - Forbes Home

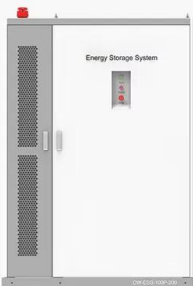
Key Takeaways. Some of the solar energy pros are: renewable energy, reduced electric bill, energy independence, increased home resale value, long term savings, low ...

### How do solar cells work? Photovoltaic cells explained

A photovoltaic cell is the most critical part of a solar panel that allows it to convert sunlight into electricity. The two main types of solar cells are monocrystalline and polycrystalline. The "photovoltaic effect" refers to the ...



#### PRODUCT INFORMATION



- BATTERY CAPACITY: 50kWh~500kWh
- DC VOLTAGE RANGE: 400V~1000V
- DEGREE OF PROTECTION: IP54
- OPERATING TEMPERATURE RANGE: -10~50°C

### How to find positive and negative on a solar panel?

One of the easiest ways to identify the positive and negative terminals of a solar panel is to look for the markings on the back of the panel itself. Most panels will have a label or ...



### How do you know if a solar panel is positive or negative

When visually inspecting solar panels, the positive and negative terminals are usually marked with a plus (+) and minus (-) sign, respectively. However, the color of the wires ...



### How to Check Solar Panel Polarity (Reverses + Fixes)

It means that one side of the generator has positive charges, and the other has negative charges. This voltage difference allows electric current to flow through wires from one ...

### How Do Solar Panels Work? (Everything You Need To ...)

Most solar panels are made from photovoltaic cells grouped together to convert sunlight into electricity by creating an electric field between a positive and a negative charge. Panels can be arranged together into larger solar arrays to ...



### How to Figure Out the Plus and Minus Terminals of a Solar Panel ...

Another way to find the polarity of the solar panel is to check with a voltmeter. A simple voltage reading will show you the polarity of a solar panel, even when inside. To ...



[MC4 Positive and Negative : r/SolarDIY](#)

I gather that the one with the female PIN is positive. So when connecting an MC4 extension cable (see 2nd image), the red cable (female pin) connects to the male pin on the solar panel, so will ...



[How to Check Solar Panel Polarity](#)

Yes, solar panels do have polarity. Polarity relates to the positive and negative terminals of the panel. Accurately recognizing this polarity during the connection of solar ...

**Which Solar Panel Connector Is Positive? (Types Listed)**

A solar panel has different wires and connectors that connect it to the rest of the system. In this article, we look at connectors. What are they for and how do you identify them? We also look at the terminals in a solar panel. ...



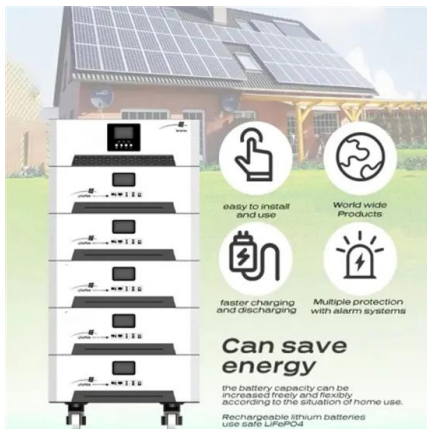
**Identify Positive Solar Panel Connectors , PV ...**

Expose the solar panel to sunlight: Ensure the solar panel is facing the sun and producing electricity during the test.. Connect the probes: Touch the red probe to the suspected positive connector and the black probe ...



## Solar Panel Wiring Basics: Complete Guide & Tips to ...

Solar panels feature positive and negative terminals. Wiring solar panels in series means wiring the positive terminal of a module to the negative of the following, and so on for the whole string. This wiring type ...



### How do you know if a solar panel is positive or negative

Voltage Meter: Useful for checking the voltage output, indicating the active side of the panel. Step-by-Step Guide to Determining Polarity. Set Up Your Multimeter: helping ...

### How do solar panels have a positive and negative side?

This causes a positive voltage from the N to the P electrode. Electrodes are attached to each semiconductor doping type and become the positive and negative electrode. When solar ...



### Unveiling Solar Panels' Environmental Impact--Pros ...

Solar energy is presently on par with conventional energy sources in terms of accessibility and affordability. Solar Energy Industries Association data indicates that the price of solar panels has decreased by 99 ...





## How Do Solar Panels Work? (Everything You Need To ...

These PV or photovoltaic cells convert sunlight into electricity by establishing an electric field between a positive charge on one side and a negative charge on the other. Average figures for solar panel power generation during monsoons

...



## How Do Solar Panels Work? A Complete Guide to Understanding Solar Energy

The journey begins when sunlight hits the surface of a solar panel. The sun emits energy in the form of photons--small packets of light energy. These photons travel ...

## The Complete Guide to Solar Panel Wiring Diagrams

(Source: Alternative Energy Tutorials) Parallel connections require the opposite: you wire all the positive terminals to the next positive input and negative-to-negative for each ...



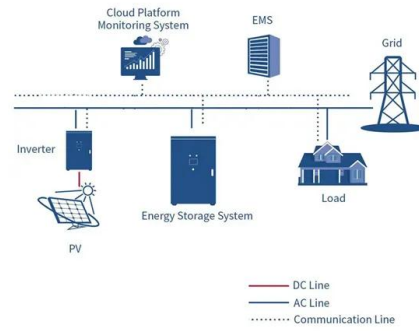
## How to wire solar panels , Essentra Components US

Solar panels are similar to batteries in that they have positive and negative terminals. A series connection is made by connecting the positive terminal of one panel to the ...



### Bypass Diodes in Solar Panels

The back of the cell, the side away from the incoming sunlight consists of a layer of aluminium or molybdenum metal which forms the negative (-) connection to the cell. Then a photovoltaic ...



### **How to find and repair ground faults in solar PV systems**

A PV string circuit without a ground fault will have open circuit voltage (Voc) between positive and negative conductors. It will have zero volts from positive to ground and from negative to ground. When a ground fault is present, ...

### **What Are the Positive and Negative Effects of Solar Energy?**

What Negative Effects Does Solar Energy Have? When considering the negative effects of solar energy, it's important to acknowledge the environmental impact of ...



### **The Complete Guide for Solar Panel Connectors**

Crimping & tightening of solar panel connectors. Solar panels do not always come with the solar connector attached. Attaching a solar panel connector to a PV wire is a ...



### Electrons and Solar Panels (How They Work)

A Solar Panel requires an electric field to function effectively and an electric field is created when opposite charges i.e. positive and negative, are separated. To capture the energy of the electrons once they are free from ...



### **Everything You Need To Know About Solar Panel Wiring**

Wiring solar panels in parallel means connecting the positive terminal of one panel to the positive terminal of another, and then the negative terminals together as well. These connections are ...

### **Grounded Vs. Ungrounded PV Systems: 5 Key Differences**

A negative grounded PV system is a solar electric system where the negative terminal of the PV solar power array is connected to the ground. This connection is made through conductive materials like a fuse, circuit breaker, ...



## **Contact Us**

---

For catalog requests, pricing, or partnerships, please visit:  
<https://vdbconstruction.co.za>