

Do ps4 controllers have lithium batteries





Overview

We recommend you are working in a controlled workspace. The buttons and springs for the L2 a.

Step #1: Remove the four screws on the back of the DualShock. They are pretty small, so place them somewhere they are not going to roll away or get lost. Step #2: With the front of t.

The only tools you will need for this repair are a Phillips #00 screwdriver and a nonabrasive prying tool. You may already have a screwdriver, but if not, you can pick one up for around \$3 on Amazon. A nylon spudger will work for prying. The cheapest we found was one from iFixit for about \$2. You will also need a 3.7V.

We recommend you are working in a controlled workspace. The buttons and springs for the L2 and R2 triggers have a tendency to fall out, particularly the R2. The springs are small and.

Step #1: Remove the four screws on the back of the DualShock. They are pretty small, so place them somewhere they are not going to roll away or.

No. Unlike Microsoft's Xbox controllers, the DualShock 4 has an internal battery that you are not meant to replace. Instead, Sony's alternative to constantly swapping out batteries is to just charge up your controller on your console (or a charging station) via a micro-USB cable. What battery does a PS4 controller use?

The stock PS4 controller is equipped with a 3.7 V lithium polymer (LiPo) battery rated for a capacity of 1000 mAh. Replacement batteries are generally available in capacities ranging from 1200 mAh to 2500 mAh. Avoid anything lower than the stock capacity. Pay attention to battery compatibility.

Can you replace a PS4 controller battery?

Fortunately, batteries are cheap and easy to replace. So we created a guide to help you finish the job in a snap. Here's how you can quickly replace your PlayStation 4 controller battery so that you can keep gaming without interruption. A word of warning: This can void your DualShock 4 warranty.



How to improve battery life on PS4 controller?

The final way of improving battery life on your PS4 controller requires getting your hands dirty. The PS4 controller has a 1000mAh battery, but you can buy a 2000mAh DualShock 4 replacement battery and install it yourself. It's not as tricky as you might think, and will double your controller's battery life, although it will void the warranty.

How to choose a replacement battery for a DualShock 4 controller?

Replacement batteries are generally available in capacities ranging from 1200 mAh to 2500 mAh. Avoid anything lower than the stock capacity. Pay attention to battery compatibility. DualShock 4 controllers manufactured after 2016 utilize a different battery connector. Verifying this is easy once you identify the model number of your controller.

Does DualShock 4 have a battery?

Unfortunately, the DualShock 4 controller's sealed, non-replaceable battery is the weakest link in the aging console. Most PS4 owners discard their controllers once the battery refuses to hold a charge. Although Sony expects you to fork out cash for a new one, it's cheaper to replace the battery for a fraction of the cost.

Why is my PlayStation 4 controller not working?

When this happens, one of the first culprits to suspect is the controller's battery. Fortunately, batteries are cheap and easy to replace. So we created a guide to help you finish the job in a snap. Here's how you can quickly replace your PlayStation 4 controller battery so that you can keep gaming without interruption.



Do ps4 controllers have lithium batteries



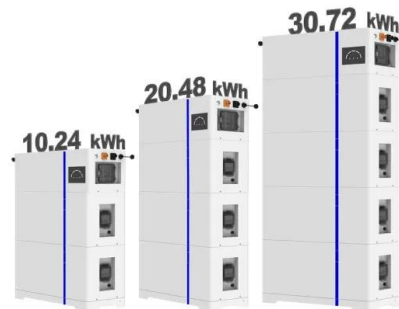
[Do all PS4 controllers use the same battery?](#)

Yes, as long as is about the same voltage and connector. A DualShock 4 Battery is 3.65v at 1000mAh, so try to get one with more mAh but same voltage. Then, there is the connector type. The DS4 comes with one of two types of battery connectors: The Big Connector Type (used on the DualShock ... Do all PS4 controllers use the same battery? Read More »

PS4 Controller Battery Replacement Guide: Save Your

The stock PS4 controller is equipped with a 3.7 V lithium polymer (LiPo) battery rated for a capacity of 1000 mAh. Replacement batteries are generally available in capacities ...

ESS



How Long Does a Ps4 Battery Last (It's Benefits)

Fortunately, there are a few things you can do to extend the battery life of your PS4 controllers. First, make sure you're only using official Sony PlayStation 4 controllers and batteries. Third-party products may not work as well with the console and could potentially damage it or shorten its lifespan.

How do you manage the ps4 controllers battery

I know I will be instantly down voted, but the PS4 controller (although really good) has the worst battery life every! My controllers at this point



refuse to take a full charge and it feels like they live either tethered or on charge. I run multiple controllers to get through



PlayStation Controllers: Do They Have Batteries? Find Out Now!

The answer to the question "Do PlayStation controllers have batteries?" is nuanced. Older PlayStation controllers (PS1, PS2): Yes, they require two AA batteries. Modern ...

[How To Replace Your PS4 Controller Battery](#)

Source: Android Central11. Place the battery into the slot and attach the connector back into the socket, making sure to put it in the right way. 12. Reverse this entire step by step guide to putting the PS4 controller back together. Make sure you put the three small



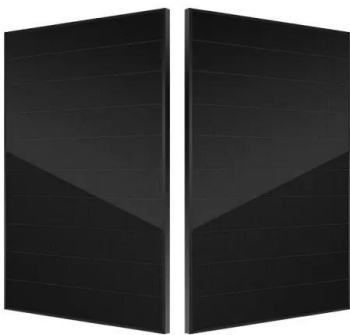
DUALSHOCK®4 Wireless Controller Instruction Manual

4 Battery life and duration ? The battery has a limited lifespan. Battery charge duration gradually decreases with repeated usage and age. Battery life also varies depending on the storage method, usage state, environment and other factors. ? Charge in an environment where the temperature range is between 10 C - 30 C.



Here's what you need to know about the PS5 controller

But as of right now, you can only use DualShock controllers with the PS4. You can, however, use the PS5 controller with your gaming PC or mobile device, including iPhone/iPad and Android.

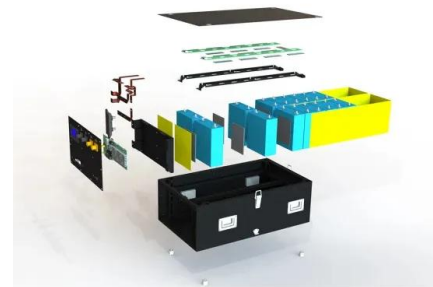


It's incredible to me that the Xbox controller not having an

One of my favorite things about my elite series 2 is it's integrated lithium battery. My original PS3 controllers all still work. My PS4 controllers all still work. My first gen iPad mini still works. So long as they make battery replacements relatively inexpensive then

How To Check PS4 Controller Battery On PC? [3 ...

Checking a PS4 controller's battery on a PC feels like a secret handshake for gamers. It's not built-in, leaving PS4 fans stumped and searching forums for answers. They become detectives, sharing tips and tricks for ...



[Does A Ps4 Have A Lithium Battery](#)

The LIP1922-S 2200mAh lithium polymer battery is a LIP1522 replacement. It's compatible with the DUALSHOCK 4 PS4 Pro controller released by Sony in 2016 and after. Number of Batteries2 Lithium Polymer batteries required. (included)Battery Weight35 Grams



[How to replace a PS4 controller battery](#)

Here's how you can quickly replace your PlayStation 4 controller battery so that you can keep gaming without interruption. A word of warning: This can void your DualShock 4 warranty.



Lithium VS AA Batteries for controllers : r/gamecollecting

Yeah definitely!!, I know its kinda a last resort but I've decided to try have a ps4 controller that takes battery 3rd party so I can just play my ps4 or a cons games without worrying about the lithium battery replacement But I can't find any so far and every time I ask

Why is the PS5 controller battery life so bad...

However, the battery life on the PS5 controller is absolute trash. I used to see people say Xbox is stuck in the past because their controllers use AA batteries, but after using both controllers I've realized the AA batteries is way better.



DUALSHOCK®4 Wireless Controller Instruction Manual

Use a USB cable that complies with the USB standard. You might not be able to charge the controller on some devices. Battery Caution - using the built-in battery: ` This product contains ...



Does the PS4 slim itself have a lithium battery at all? : r/PS4

I believe it uses a 2032 lithium ion 3V battery, yes. Reply reply [deleted] o Wait the console right Reply reply More replies TheRealBlazzMaTazz o Ps4 no, controllers Yes Reply reply google_it_bruh o I believe it uses a 2032 lithium ion 3V battery, yes



How to Replace PS4 CMOS Battery? Step-by-Step Guide

CMOS battery failure on the PS4 can lead to various issues, from incorrect time settings to game crashes. Follow our guide, replace it in about 30 mins. PS4 Fat If you own a Fat model, you will have already removed the shiny half of the top cover and the hard drive

PS4 Controller Battery Life: Tips and tricks to increase ...

The final way of improving battery life on your PS4 controller requires getting your hands dirty. The PS4 controller has a 1000mAh battery, but you can buy a 2000mAh DualShock 4



Controllers: Do you prefer non-removable batteries (PS4) or removable

Non-removable 100%. No unnecessary faffing with batteries. They need to improve the battery life though, even though I sit right next to the screen when playing, so I normally have a cable in anyway. EDIT: literally charge the controller when you're not ...



Dualshock 4 Battery Capacity? (How Long Does the Dualshock 4 Battery)

The Dualshock 4 battery capacity is smaller than that of the Xbox One (you can charge your Xbox One controller using batteries, but it's not necessarily the best option) and PS4 controllers. This means that it will need to be recharged more frequently.



[How Long Does a PS4 Controller Last?](#)

PS4 controllers are based on rechargeable batteries, and it wears off as you use them more often. With time the battery level falls like any other electronic gadget. I recommend taking care of the Dualshock 4 controller ...



[Do PS4 controllers have lithium batteries?](#)

The stock PS4 controller is equipped with a 3.7 V lithium polymer (LiPo) battery rated for a capacity of 1000 mAh. Replacement batteries are generally available in capacities ranging from ...



5 Tips for saving battery life in your PlayStation 4 controller

Though the PS4's Dualshock 4 has a very short battery life, this guide will give you all the tips you'll need to get the most mileage out of your controller.



[How to Check PS4 Controller Battery?](#)

Section 3: Troubleshooting to check PS4 controller battery Issues No battery guide would be complete without troubleshooting tips for common problems. Let's cover what to do if you see blinking lights or get low battery warnings. **Blinking Pattern Meanings**



[DualShock 4 \(CUH-ZCT1U\) Battery Replacement](#)

Follow this guide to replace the battery in your DualShock 4 model CUH-ZCT1U controller. The x button on my controller want working properly so I ordered new rubber mounts. I followed the guide, taking my time to make sure I didn't damage anything.



[Do PS4 Controllers Come Charged? \(Explained\)](#)

Why Does My PS4 Controller Run Out of Battery So Fast? Some players may notice that their DualShock controllers seem to die quickly. Even if they indicate that they have a full charge, it is possible that some controllers will last only a ...



What type of batteries come with the Sony Dualsho - Q& A

What type of batteries come with the Sony Dualshock 4 wireless controller - lithium? I am - Learn about Sony - DualShock 4 Wireless Controller for PlayStation 4 - Glacier White with 11 Answers - Best Buy In-store pricing may vary. Prices and offers are subject to



DualShock 4 (CUH-ZCT1U) Battery Replacement

Introduction. Follow this guide to replace the battery in your DualShock 4 model CUH-ZCT1U controller. What you need. Step 1 Check your controller model. Check the model number on ...



Support Customized Product



The best PS4 controller for your PlayStation 4

Sure, it's the default pad for any PS4 gamer. But that doesn't stop the DualShock 4 being Sony's best controller ever. Delightfully ergonomic, we'd happily have paid extra to have a controller this good for the PS3 's much more comfortable, thanks to a bigger

Do PS4 controllers have lithium batteries?

Lithium metal (non-rechargeable) batteries are limited to 2 grams of lithium per battery. What devices have a lithium battery? Lithium-Ion batteries are rechargeable and are used in vaping devices, many personal electronics such as cell phones, tablets, and laptops, E-Bikes, electric toothbrushes, tools, hoverboards, scooters, and for solar power backup storage.



How to Check the Battery Life of a PS4 Controller?

It is best to charge the controllers fully while not in use, even if there are some bars left on the battery indicator. What battery does PS4 DualShock Controller use? DualShock Controllers use a lithium-ion battery with 2000mAh. When it comes time to replace the



Contact Us

For catalog requests, pricing, or partnerships, please visit:
<https://vdbconstruction.co.za>