

Dr Phillip A Fields University of South Alabama lithium battery





Overview

Who is Dr Phillip fields?

On this inspiring episode, Dr. Jennifer Young Pierce talks with Dr. Phillip Fields, professor of anatomy at the University of South Alabama College of Medicine. In 2007, Dr. Fields was diagnosed with chronic lymphocytic leukemia (CLL) and told to give up his passion - running.

Are lithium leach fields destroying the environment?

More than half of lithium extracted is used in the production of car batteries, according to the Minerals Education Coalition. Not only do such photographs show the extent of environmental destruction related to lithium extraction, but they also highlight other potential detrimental impacts from lithium leach fields.

What does Dr fields do?

Dr. Fields' duties include the design and delivery of the curriculum linked to the anatomical sciences. Areas of focus include the integration of both developmental anatomy and radiologic imaging related to clinical anatomy. Dr. Fields can be reached at pfields@southalabama.edu or (251) 460-6766.



Dr Phillip a fields university of south alabama lithium battery

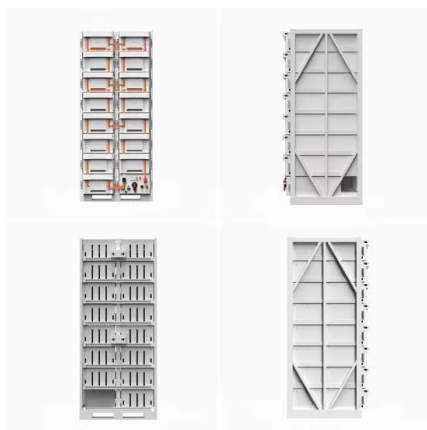


[The Amazing Life of Phillip Fields](#)

Every chair is occupied. Cheerful, hectic chatter fills the wood-paneled room, and cloudy skies peek through the large front windows. A white-haired man with kind eyes and a quiet disposition takes to the podium. The ...

Li-Cycle to build EV battery recycling plant in Alabama

Li-Cycle Holdings Corp said on Wednesday it will build a recycling facility in Alabama to process a rising volume of lithium-ion battery scrap in the U.S. Southeast for reuse by



Lithium fields: Beautiful from the air, trouble on the ...

The element is a critical component in the lithium-ion batteries used to power electric cars, which are projected to account for up to 60 per cent of new car sales by 2030. The ongoing demand for

Phillip Fields

About Company Experience Org Chart News & Media Similar Profiles About Phillip Fields Phillip Fields is a Full Professor at University of South Alabama College of Medicine based in Dothan, Alabama. Previously, Phillip was an Associate Professor at University of South Alabama College



of Medicine and also held positions at University of South Alabama.



[Phillip N. Smith, Ph.D., Psychology](#)

Phillip N. Smith, Ph.D., Professor, Department of Psychology. National Institute of Mental Health, Psychology Department UCOM 1000 University of South Alabama 75 South University Boulevard Mobile, AL 36688-0002 Ph: (251) 460-6371 Inash@ psmith@

Nah This CANNOT BE TRUE

A machine like this is required to move 500 tons of earth/ ore which will be refined into one lithium car battery. It burns 900-1000 gallons of fuel in a 12- hour shift. Lithium is refined from ore using sulfuric acid The proposed lithium mine at Thacker Pass, Nevada is



Fact check: Viral image shows coal mining machine, not

The claim: A machine must move 500 tons of earth to make one lithium car battery A post circulating widely on Facebook shows an enormous mining machine and claims to detail the earth moving needed



Leukemia doesn't stop Mobile marthoner from soaking in Boston ...

Dr. Phillip Fields just completed his third Boston Marathon. This time as a Leukemia survivor. But the University of South Alabama professor doesn't know if he'll ever grace the Boston Marathon



[Philip Carr , University of South Alabama](#)

Philip Carr, University of South Alabama, Sociology, Anthropology and Social Work Department, Faculty Member. Studies Lithic Analysis, Hunter-Gatherer Archaeology, and Lithic Technology. [Skip to main content](#)



Case Study , USA News

In 2022, a large shipment of lithium batteries resulted in a fire likely due to improper packaging, according to FAA data. The box designed by Crump, along with students Paige Palazzo, Luke Andress, Devon Edinburgh



Alabama Will Get A Li-Cycle Battery Recycling Facility

Greg Canfield, Secretary of the Alabama Department of Commerce, said, "With EV production set to start in Alabama in 2022, Li-Cycle's Tuscaloosa recycling facility will ensure that Alabama





Phillip Fields

· Experience: University of South Alabama, College of Medicine · Education: Texas A& M University · Location: Mobile · 332 connections on LinkedIn. View Phillip Fields' profile on



Division of Medical Education , College of Medicine

Phillip Fields, Ph.D. Professor, Medical Education. Dr. Fields' duties include the design and delivery of the curriculum linked to the anatomical sciences. Areas of focus include the integration of both developmental anatomy and radiologic ...

Fact check: Post wrongly IDs nickel mine, lacks electric car context

The claim: A photo shows a mine where lithium is extracted with diesel vehicles to supply materials for electric car batteries. An image circulating on Facebook allegedly ...



Phillip Fields, Ph.D.: books, biography, news, upcoming events

Phillip Arthur Fields received his BS degree from the University of Florida (1969) and his PhD in biochemistry from Texas A& M University (1976). He has been teaching human anatomy and human embryology to medical students at the University of South Alabama, College of Medicine in Mobile, Alabama since 1980.



Mystery of impediment to a next-gen battery solved

In the race for fast-charging, energy-dense lithium metal batteries, researchers discovered why the promising solid electrolyte version has not performed as hoped. This could help new designs



Lithium fields: Beautiful from the air, trouble on the ...

The rush for lithium is transforming landscapes across South America. The varying hues of the ponds in this extraction field on the salt flats are caused by different concentrations of



Case Study , USA News

In 2022, a large shipment of lithium batteries resulted in a fire likely due to improper packaging, according to FAA data. The box designed by Crump, along with students Paige Palazzo, Luke ...



Med School Watercooler

Dr. Fields, who is an associate professor of cell biology and neuroscience at the University of South Alabama College of Medicine, teaches the first course students take in medical school - human anatomy. As a life-long runner, Dr. Fields has typically run two





Marathoner to keep running to inspire others who are facing cancer

Dr. Phillip Fields sits in his office at the University of South Alabama's Medical Sciences Building with some of his marathon memorabilia on Tuesday, Jan. 29, 2013. (Mark Inabinett/minabinett@al)



Whiddon College of Medicine at the University of South Alabama

Phillip Fields, Ph.D., has just finished signing copies of his memoir for a couple of second-year medical students in his office at the University of South Alabama College of Medicine. "Never give up," says Fields, explaining the main takeaway from his book, "The Long Road Back to Boston: Running Marathons with Leukemia."

Nothing But Lies

refined into one lithium car battery. It burns 900-1000 gallons of fuel in a 12-hour shift. Dr. Phillip A. Fields University of South Alabama Mobile, Alabama Take action and share this! About the Author Mychal Massie Mychal S. Massie is an ordained minister



Nicholas Ashton on LinkedIn: Dr. Phillip A. Fields Lithium-ion.pdf

Dr. Phillip A. Fields Lithium-ion.pdf dropbox 15 10 Comments Like Comment Share Copy LinkedIn Facebook Twitter Sean McBride Lithium Batteries, Safe or Dangerous? What do you think? Lithium



Phillip Fields/Runs Marathons with leukemia (CLL)/Mobile, AL

My name is Phillip Fields, born 1947. I am a professor of Anatomy at the University of South Alabama College of Medicine where I teach Human Anatomy to MD, PA and PT students (Resume). My life consists of God, teaching, and running marathons. In 2007, I



UA Leading Project to Give EV Batteries Second Life

The University of Alabama, part of The University of Alabama System, is the state's flagship university. UA shapes a better world through its teaching, research and service. With a global reputation for excellence, UA provides an inclusive, forward-thinking environment and nearly 200 degree programs on a beautiful, student-centered campus.

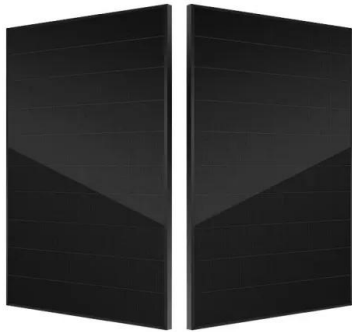
Posts mislead about environmental impact of green energy

Us Electricity Is 19 Percent Coal, Not 40 Percent Exaggerated Mineral Figures Solar Panels Can Be Recycled Raw Materials List 'exaggerated' Wind Turbine Blades Can Be Recycled The posts say that electric vehicles' (EV) batteries store electricity manufactured "primarily by coal, uranium, natural gas-powered plants, or diesel-fueled generators." "Since forty percent of the electricity generated in the U.S. is from coal-fired plants, it follows that forty percent of the EVs on the road are coal-pow...?factcheck.afp ???????2/5?????: 2022?3?12?Snopes



Does Viral Photo Show a 'Toxic' Lithium Extraction Field?

?: Lithium leach fields, such as the one shown in a viral photograph circulating in 2022, pose hazards to the environment and human health.



Faculty

Faculty Name Faculty Department Faculty Position Degrees Held Abend, Robert David Music Assistant Professor BME, Eastern Michigan University MM, Western Michigan University DMA, Michigan State University Abeynanda, Gayan Shanaka Mathematics and

News , Engineering

Research focused on why and how lithium-ion batteries may suddenly fail energetically, causing smoke, fire or even an explosion, a phenomenon called thermal runaway, has earned a researcher at The University of Alabama in Huntsville (UAH) a National Science Foundation (NSF) CAREER Award totaling \$598,181.



James Bear on LinkedIn: "A machine like this is required to move ...

Dr. Phillip A. Fields University of South Alabama College of Medicine 5851 USA Dr N MSB 1164 Mobile, Alabama 36688 251/460-6766 copied and pasted 5 Like Comment

[Panasonic 18650PF Li-ion Battery Data](#)

The included tests were performed at the University of Wisconsin-Madison by Dr. Phillip Kollmeyer (phillip.kollmeyer@gmail). If this data is utilized for any purpose, it should be appropriately referenced. The tests can be used to test Neural Network and Kalman Filter State of Charge algorithms, or to develop battery models, and are intended to be a ...





Fact check: Post wrongly IDs nickel mine, lacks electric car context

Yet AFP, which fact-checked the same meme as Snopes, points out that open mines (similar to the nickel mine shown in the post) aren't the most common method of extracting lithium. AFP cited a

Contact Us

For catalog requests, pricing, or partnerships, please visit:
<https://vdbconstruction.co.za>