

# **Ee6711 power system simulation syllabus**





## Ee6711 power system simulation syllabus

---



### [SRM VALLIAMMAI ENGINEERING COLLEGE](#)

1916108 - POWER SYSTEM SIMULATION LABORATORY M.E (POWER SYSTEMS ENGINEERING) SEMESTER - I (REGULATION 2019) LAB MANUAL / OBSERVATION Prepared by, ACADEMIC YEAR: 2021-2022 Mr. T.Santhoshkumar, AP (Sr.G)/ EEE

### **EE3501-Power System Analysis Syllabus Regulation 2021 Anna ...**

The article contains the subject code EE3501, which deals with the Anna University B.E Electrical and Electronics Engineering Semester -V Power System Analysis Syllabus. Unit-wise detailed syllabus of this subject EE3501 is included in this article. You can get



### **EE6711 Powersystem Simulation Laboratory Manual Question ...**

Power System Simulation Laboratory.pdf (Size: 2.48 MB / Downloads: 798) EE6711 Powersystem Simulation Laboratory Manual Question Bank - VEC Edition View a Printable Version



### [PS5111-Power System Simulation Lab-I , PDF](#)

This document describes a power system simulation laboratory course covering power flow analysis and other topics. The syllabus includes power flow analysis using the Newton-Raphson and fast decoupled methods, transient stability

...



**K.L.N. COLLEGE OF ENGINEERING  
DEPARTMENT OF ...**

- 58. EE6005 C405E4 Elective - II - Power Quality
- 59. EE6004 C405E3 Elective - II - Flexible AC Transmission Systems
- 60. EE6008 C406E4 Elective - III - Microcontroller Based System Design
- 61. EE6711 C407 Power System Simulation Laboratory VIII

**18CS645 System Modelling and Simulation syllabus for CS**

18CS645 System Modelling and Simulation syllabus for CS VTU Syllabus CS 2018 Scheme 6 SEM System Modelling and Simulation A d v e r t i s e m e n t Module-1 Introduction 8 hours  
Introduction: When simulation is the appropriate tool and when it is not



[Anna University EEE Syllabus \(R-2013\) , PDF](#)

EE6711 Power System Simulation Laboratory 0 0 3 2 8. EE6712 Comprehension 0 0 2 1 TOTAL 18 0 5 21 SEMESTER VIII S.NO. COURSE CODE COURSE TITLE L T P C THEORY 1. EE6801 Electric Energy Generation, Utilization and Conservation 3 0 0 3 2.



## EE6711 Power System Simulation Laboratory Manual

Anna University Chennai Department of B.E- Electrical and Electronics and Engineering Final Year Seventh Semester EE6711 Power System Simulation Laboratory Lab ...

## High Voltage Solar Battery



### [EE 6711 Power System Simulation Laboratory](#)

EE 6711 Power System Simulation Laboratory 9  
ALGORITHM FOR FORMATION OF Z-BUS MATRIX  
Step 1 : Read the values such as number of lines, number of buses and line data, Generator data and Transformer data. Step 2 : Initialize Ybus matrix. Y



### [EE6711 Power System Simulation Lab manual](#)

An independent system operator maintains grid operations. This topic belongs to Power System Operation and Control. It will help to all electrical engineering students as well as faculties. Vector control is a more advanced ...



### **ABCTOTO : Situs Slot Online Terpercaya dengan Slot Gacor dan ...**

ABCTOTO adalah destinasi terbaik untuk penggemar judi online dengan pilihan slot gacor, info RTP slot terbaru, dan fitur demo slot yang seru. Temukan pengalaman bermain slot online dengan tingkat kemenangan tinggi hanya di ABCTOTO. Nikmati sensasi



### 15EEL76 Power system Simulation Laboratory syllabus for EE

VTU exam syllabus of Power system Simulation Laboratory for Electrical and Electronics Engineering Seventh Semester 2015 scheme Experiments 1 Use of MATLAB package Formation for symmetric  $\Delta$  / Y configuration for Verification of  $AD - BC = 1$ , Determination of



### EE3611: Power System Laboratory syllabus for EEE 2021 regulation

Power System Laboratory detailed syllabus for Electrical & Electronics Engineering (EEE) for 2021 regulation curriculum has been taken from the Anna University official website and presented for the EEE students. For course code, course name, number of do

### [Anna University EEE Syllabus \(R-2013\) . PDF](#)

Anna University EEE Syllabus (R-2013) The document provides information on the curriculum and syllabus for the Bachelor of Electrical and Electronics Engineering program at an affiliated institution of Anna University, ...



### [EE 6711 Power System Simulation Laboratory](#)

To obtain the bus impedance matrix  $Z$  - bus of the given power system network using MATLAB software package. THEORY  $Z$  - bus matrix is an important matrix used in different kinds of ...



DEPARTMENT OF ELECTRICAL AND ELECTRONICS

...

This Laboratory manual for Power System Simulation Lab -II has been revised and updated in order to meet the Curriculum changes, laboratory equipment upgrading and the latest circuit simulation. Every effort has been made to correct all the known if you find

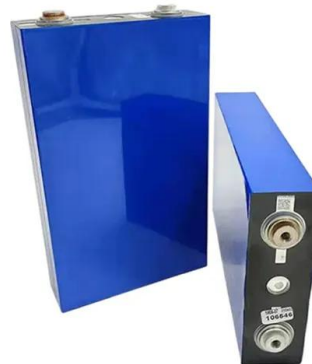


**AFFILIATED INSTITUTIONS B.E. ELECTRICAL AND ...**

EE6711 Power System Simulation Laboratory 0 0  
3 2 8. EE6712 Comprehension 0 0 2 1 TOTAL 18  
0 5 21 SEMESTER VIII S.NO. COURSE CODE  
COURSE TITLE L T P C THEORY 1. EE6801

**EE6711-Power System Simulation Laboratory , PDF**

EE6711-Power System Simulation Laboratory - Free ebook download as PDF File (.pdf), Text File (.txt) or read book online for free. The document contains procedures for calculating line parameters of various transmission line ...



[EE8711-Power System Simulation Lab Manual](#)

SRM Valliammai Engineering College An Autonomous Institution SRM Nagar, Kattankulathur - 603203 Department of Electrical and Electronics Engineering EE8711 - Power system Simulation Laboratory Manual LAB MANUAL IV Year- VII Semester - Electrical and Electronics Engineering Academic Year 2021-2022 (2017 Regulation) Prepared by, Mr.S.Rajan Babu/AP - (Sel.G) ...



[EE3611-Power System Laboratory Syllabus ...](#)

The article contains the subject code EE3611, which deals with the Anna University B.E Electrical and Electronics Engineering Semester -VI Power System Laboratory Syllabus. Unit-wise detailed syllabus of this subject ...

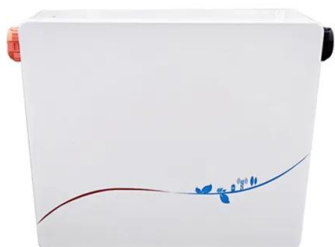
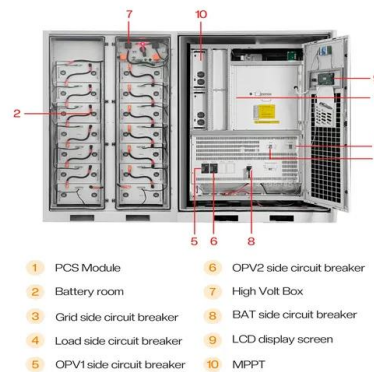


**Ere Perumal Manimekalai College of Engineering Accredited by ...**

Subject code & Name: EE6711 Power System Simulation Laboratory Lab Manual (Regulation -2017) Semester (EEE) Academic Year: 2018 - 2019 H IEEE PRINCIPAL AC TY DEPARTMENT OF ELECTRICAL ELECTRONICS ENGINEERING SEM - E.E.E.

**EE8711-Power System Simulation Lab Manual , PDF**

This document contains a laboratory manual for the power system simulation lab of the Department of Electrical and Electronics Engineering at SRM Valliammai Engineering College. It includes 10 experiments related to topics like ...



[EE6711 Power System Simulation Lab Manual](#)

Department Of Electrical And Electronics Engineering Subject Code: EE6711 Subject Name: Power System Simulation Lab Semester : 7 Prepared By: R DHINESH KUMAR M.E., AP/EEE SEMBODAI R.V ENGINEERING COLL



## [PDF] EE8711 Power System Simulation Laboratory 2017 ...

Download [PDF] EE8711 Power System Simulation Laboratory 2017 Regulation Syllabus plus Lab Manuals for Anna University Students [PDF] EE8711 Power System Simulation Laboratory 2017 Regulation Syllabus and Lab Manuals for Anna University Students , wpehye / EE6711 Power System Simulation Lab manual



## A LABORATORY MANUAL For POWER SYSTEMS SIMULATION ...

POWER SYSTEMS SIMULATION LABORATORY  
Version 2014-2015 For Final Year 2nd Semester  
EEE Students DEPARTMENT OF ELECTRICAL &  
ELECTRONICS ENGINEERING Sir C.R. Reddy  
College of Engineering ELURU - 534 007 (A.P)  
CONTENTS

### [Scheme & Syllabi ME \(Power Systems\)](#)

ME (Power Systems) w.e.f. 2020 First Semester  
S. No. Course No. Course Name L T P Cr 1  
PEE106 Modelling and Analysis of Power System 3 1 2 4.5 2  
PEE109 Power System Dynamics and Stability 3 1 0 3.5 3  
PEE110 Protective Relaying



### [EE 6711 Power System Simulation Laboratory](#)

EXERCISE 1 . AIM . To compute bus admittance matrix for the given power system network using. MATLAB software package. THEORY . Bus admittance matrix is often used in power ...



## B.E EEE I TO VIII Semesters Curriculum and Syllabus R2013

- 7. EE6711 Power System Simulation Laboratory
- 8. EE6712 Comprehension SEMESTER VIII
- THEORY 1. EE6801 Electric Energy Generation, Utilization and Conservation 2. Elective - IV 3. Elective - V PRACTICAL 4. EE6811 Project Work ELECTIVE - I 4.



### R.M.K. ENGINEERING COLLEGE

Course code : EE6711 Course Name: Power System Simulation lab CO Course outcome(CO) - Statements C407.1 Model the Transmission line of power system C407.2 Develop Bus Impedance and Admittance matrices for a network C407.3 Analysis of C407.5

## EE3511-Power Electronics Laboratory Syllabus Regulation 2021 ...

Switched mode power converter. Simulation of PE circuits (1 $\phi$  & 3 $\phi$  semi converter, 1 $\phi$  & 3 $\phi$  full converter, dc-dc converters, ac voltage controllers). Related Posts On Semester -V: EE3501 - Power System Analysis EE3591 - Power Electronics



## EE6711-Power System Simulation Laboratory PDF

The document is a laboratory manual for a Power System Simulation course. It contains 10 experiments related to topics like transmission line parameter calculation, load flow analysis, ...



## Contact Us

---

For catalog requests, pricing, or partnerships, please visit:  
<https://vdbconstruction.co.za>