

# Electric power steering the eps system is not functioning correctly





## Overview

---

An electric power steering system uses an electric motor to assist the driver when turning t.

If the EPS system fails while driving, it will become more difficult to steer the vehicle. This can make it difficult to keep the car in its lane and may even cause the vehicle to veer off course. I.

Several symptoms can indicate that the EPS system is failing. The most common symptoms include: 1. EPS Warning Light 2. Loss of Power Assist 3. Vehicle Pulling to One Direction 4.

Electric power steering (EPS) is a vehicle steering system that uses an electric motor to assist the driver in turning the wheels. This system replaces the traditional hydraulic power steering system, which uses hydraulic fluid to help the driver. EPS is a newer technology that offers several advantages over hydraulic.

An electric power steering system uses an electric motor to assist the driver when turning the steering wheel. The motor is connected to the steering column and interacts.

If the EPS system fails while driving, it will become more difficult to steer the vehicle. This can make it difficult to keep the car in its lane and may even cause the.

Several symptoms can indicate that the EPS system is failing. The most common symptoms include: 1. EPS Warning Light 2. Loss of Power Assist 3. Vehicle Pulling to.

If your electric power steering system fails, it can trigger an EPS warning light on your dash. This light is usually red or yellow, meaning there is a problem with your power steering. If you see this light, you should take your car to a mechanic to have it checked out. What is electric power steering (EPS)?

As technology evolves in the automotive space, auto Manufacturers are shifting from conventional power steering to electric power steering systems (EPS). Don't confuse EPS with an electro-hydraulic system, which is a hybrid of



both conventional and electric power steering systems.

Why do electronic power steering systems fail?

Electronic power steering systems may fail due to issues with the mounted electric motor. Excessive heat on the motor is a common cause of failure. Infiltration of the system environment by water, dirt, or other contaminants is also likely to lead to EPS failure.

How do I contact electric power steering (EPS)?

Contact us today, either by filling in our easy online form or giving us a call on 0208 853 3343. Tags : Electric Power-Assisted Steering, EPS System, Power Steering Specialist, Steering System, Torque Sensor. Problems with your Electric Power Steering (EPS) system?

.

Are You facing problems with your electric power steering system?

If you're facing issues with your Electric Power Steering (EPS) system, it's important to identify the problem and find a solution. Here are some common EPS problems that car owners often encounter: Loss of Power Assist: One of the most common problems with EPS is a sudden loss of power assist.

Can EPs and steering position sensors be replaced individually?

In other configurations, the EPS module, steering torque and steering position sensors can be individually replaced. Although configurations might vary, the basic electric steering system consists of the power steering control module, assist motor, torque sensor and steering position sensor.

What causes EPs failure?

Electronic Power Steering (EPS) system failure can be caused by infiltration of the system environment by water, dirt, or other contaminants. In brush style systems, carbon contamination may also lead to steering failure. In general, brush style systems are more prone to failure than brushless systems. Another area of concern is the electronic board and circuitry.



## Electric power steering the eps system is not functioning correctly

---



### Diagnosing Electrical Power Steering (EPS) Issues

ELECTRIC STEERING SYSTEMS Since many electric steering systems aren't field serviceable, they are usually replaced as a unit. In other configurations, the EPS module, ...

### Electric Power Steering

Electric power steering (EPS) has been around for more than 20 years. What was once a solution for small cars has turned into a "go to" steering assist for trucks, large sedans and EVs. The technology has made stop/start, hybrids and ADAS possible.



### Power Steering Not Working: Causes, Diagnosis, and Solutions

Common causes include low or leaking power steering fluid, a failing power steering pump, or issues with the electric power steering system. Power steering is a critical ...



### [A Visual Guide to Power Steering Systems](#)

The electric power steering (EPS) system is an advanced steering system that has become increasingly popular in modern vehicles. It is designed to assist the driver in steering the vehicle by applying an electric motor to the steering mechanism.



### 12.8V 200Ah



### [Electric power steering system \(EPS\)](#)



Automated driving with electric power steering  
The EPS controls and assists with the support of an intelligent electric motor the vehicle steering. Based on the steering signal from the torque sensor, the control unit calculates the optimal steering support and sends

### 2014-2018 ALTIMA; HYDRAULIC ELECTRIC POWER STEERING

Electric Power Steering (H-EPS) system. Check fluid level with the ignition OFF and fluid temperature between 0 - 30 C (32 - 86 F). is not secured correctly. b. If the clamp is loose like the one shown in Figure 7, replace the H-EPS high pressure line.



- 50KW/100KWH
- HIGHER POWER OUTPUT IN OFF-GRID MODE
- CONVENIENT OPERATION & MAINTENANCE
- PRE-WIRED

### S& S Unit 4 Flashcards

Study with Quizlet and memorize flashcards containing terms like What is the maximum pressure a power steering pump provides during low speed cornering?, Technician A says that some power assist systems use an external cooler for the power steering fluid. Technician B says that the cooler is located in the pressure line, before the steering gear box. Which technician is correct, ...



## Does a Low Car Battery Affect Electric Power Steering? (How Does)

While a low battery will not affect the electric power steering system itself, it can affect other systems in the vehicle that is necessary for the power steering to function properly. For example, if the battery is too low, it may not have enough power to operate the electric motor that assists in turning the wheels.



### [Electric power steering system \(EPS\)](#)

Electric power steering (EPS) is a key technology for highly automated driving. The Bosch EPS variants meet the requirements for small, mid-range, sports cars as well as light commercial ...



### [Common EPS Electronic Column System Failures](#)

Today's electronic power steering systems may fail due to issues with the mounted electric motor. In particular, excessive heat on the motor is likely to cause the failure modes. Infiltration of the system environment by ...



### [How Does Electric Power Steering Work?](#)

Introduction: GM vehicles have used electric power steering (EPS) systems for almost a decade now, so odds are good you've already worked on a vehicle using the system. Interestingly, it's not just expensive or luxury ...



**2MW / 5MWh**  
**Customizable**



### Common EPS Electronic Column System Failures

Today's electronic power steering systems may fail due to issues with the mounted electric motor. In particular, excessive heat on the motor is likely to cause the failure modes. Infiltration of the system environment by water, dirt, or other contaminants will also likely lead to EPS failure.



### **KIA Electric Power Steering Problems - Reasons and Symptoms**

Signs and Causes of Electric Power Steering System Failure When the EPS is failing, you will experience these symptoms: The EPS Warning Light Will Illuminate If the electric power steering system in your KIA is failing, you'll notice a warning light on the

### What Is Electric Power Steering System?

The automotive industry has seen significant advancements in recent years, and one of the key innovations in vehicle steering technology is the electric power steering (EPS) system. Unlike traditional hydraulic power steering, which relies on fluid pressure, the electric power steering system utilizes an electric motor to provide steering assistance.



### Fail-operational electric power steering (EPS)

Fail-operational electric power steering (EPS) is a safety critical application in cars that are increasingly autonomous. A redundant system ensures that EPS will continue to function even in the highly unlikely event of a system failure. Beyond fulfilling safety



### Electrical power steering repair

Electrical power steering (EPS) is a result of eliminating the power steering pump and has drastically changed the way we diagnose and repair steering systems. These systems first ...



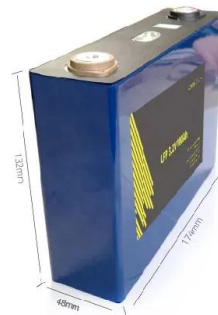
### **(PDF) Simulation analysis of electric power steering System (EPS...**

Electric Power Steering (EPS) is a full electric system, which reduces the amount of steering effort by directly applying the output from an electric motor to the steering system.



### **Understanding the Basics: Electric Power Steering System ...**

Electric power steering (EPS) is a modern technology that has replaced traditional hydraulic systems in many vehicles. This advanced system provides drivers with enhanced control and responsiveness, improving the overall driving experience. Understanding how



**Can save energy**  
the battery capacity can be increased freely and flexibly according to the situation of home use.  
Rechargeable lithium batteries use safe LiFePO4

- easy to install and use
- World wide Products
- faster charging and discharging
- Multiple protection with alarm systems

### **Stiff Steering Wheel in Electric Power Steering Systems: Causes ...**

Experiencing a stiff steering wheel with your electric power steering (EPS) system? This article uncovers the possible causes, like a malfunctioning power steering pump or faulty steering gear. Discover solutions like checking fluid levels and consulting a professional mechanic to resolve this vexing issue.



## Electric Power Steering

Electric power steering (EPS) has been around for more than 20 years. What was once a solution for small cars has turned into a "go to" steering assist for trucks, large sedans and EVs. The technology has made ...



## Solving EPS Problem in Your Car (Expert Tips & Tricks)

Understanding the Electric Power Steering (EPS) system and its components is crucial for effectively diagnosing and solving EPS problems in your car. By having a basic ...

## Electric Power Steering (EPS)

If you're an import specialist, it's important to know that, although electric power steering (EPS) has been introduced on many 2004-and-later domestic applications, EPS recently began appearing on popular import nameplates like the 2015 Honda S2000 and 2014 and 2015 models of Toyota RAV4, Camry and Highlander.



## EPS Systems: How To Diagnose Issues

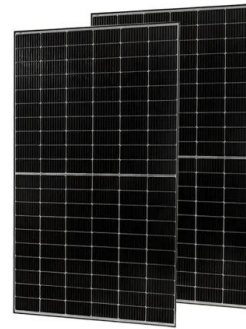
Some general issues that you may have with EPS systems are: Problems With Alignment: You may encounter an issue where the electric power steering is providing more assistive torque in ...





### Electric Power Steering Problems

To fix this, you need to diagnose and reset the system. As much as there are no steering hoses and pumps involved in the EPS system, it is designed with other system components that may malfunction. Some other vehicle brands like ...



### **Electric Power Steering**

EPS: Electric power steering is more energy-efficient since the electric motor only consumes power when assistance is required, resulting in improved fuel economy. Hydraulic Power Steering: Hydraulic systems operate continuously, using engine power even when steering assistance is not needed, which can lead to slightly lower fuel efficiency.

### **3 Common Ram 1500 Electric Power Steering Problems**

Are you having trouble with the electric power steering (EPS) in your Ram 1500? You're not alone--many Ram 1500 owners face this issue. You might be surprised to learn that one common cause of EPS problems is a broken belt. This blog will guide you through



### Phantom . Power Steering Racks

Phantom Power Steering was founded by Dumisane Sibanda, a local family owned business, based near Germiston, Gauteng South Africa. Dumisane has been in the power steering industry for over 8 years and his knowledge on power steering is extensive. We are



### C1604 Code

Yes, it is recommended to reset the OBDII system after repairing code C1604 to clear the fault codes and ensure proper functioning of the electric power steering system. 10. Can regular maintenance help prevent OBDII code C1604 from occurring?



### Chapter 123

Study with Quizlet and memorize flashcards containing terms like The two basic types of electric power steering include \_\_\_\_, The advantages of electric power steering compared to hydraulic power steering include the following EXCEPT:, What type of motor is used in most electric power steering systems? and more.

### [Check The Power-Assisted Steering Is Working](#)

Step-by-Step Guide to Checking Power-Assisted Steering How to Determine if Power Steering is Functioning Correctly To assess whether the power-assisted steering system is operating correctly, follow these steps: Start the Engine: With the vehicle parked, start the engine.: With the vehicle parked, start the engine.

Nominal Capacity  
**280Ah**  
Nominal Energy  
**50kW/100kWh**  
IP Grade  
**IP54**



### Does a Low Car Battery Affect Electric Power Steering ...

If you think that your electric power steering may not be functioning correctly, it's important to have it checked out by a professional as soon as possible. Driving without power steering can be dangerous and may ...



## An Illustrated Guide to Eps Electric Power Steering Diagrams

The EPS electric power steering system consists of several key components that work together to provide smooth and efficient steering assistance. These components include: Electric Power Steering Motor: This motor is responsible for providing the power It is



## Diagnosing Electric Power Steering (EPS) Issues

This scan tool screen displays the steering position 2 voltage, the steering wheel position in degrees of rotation, and the EPS motor command amperage. To better understand ...

## Contact Us

---

For catalog requests, pricing, or partnerships, please visit:  
<https://vdbconstruction.co.za>