

# Enphase micro inverters for solar panels

Scooter battery

The battery is installed in the pedal



Built-in battery in car beam

The battery is installed in the car beam

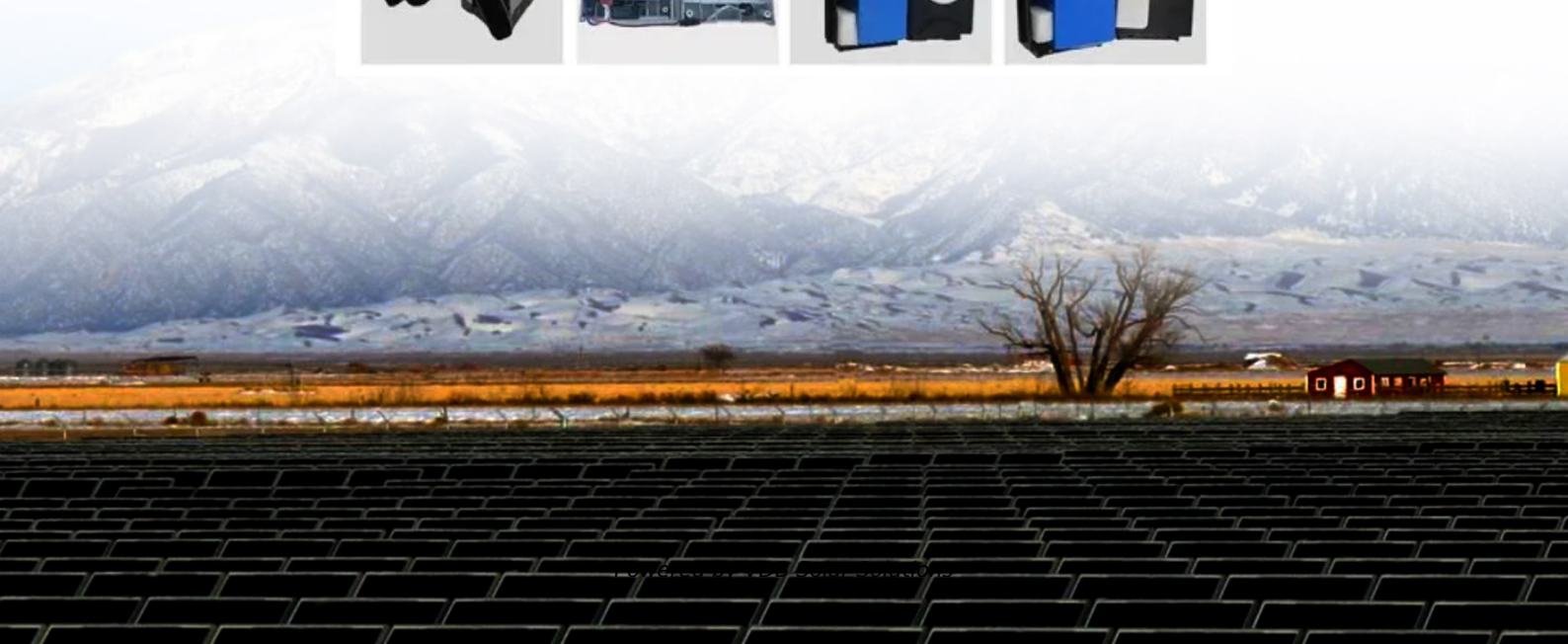


Pack the battery in the box

This the battery installation box, replace the battery cells without changing the shell



Ebike battery





## Overview

---

What are the limitations of Enphase microinverters?

The only significant limitation of Enphase Microinverters is in regard to battery storage. Microinverters aren't compatible with the majority of solar batteries as they are DC coupled, this is because of microinverters output AC power.

What types of microinverters does Enphase Energy offer?

Enphase Energy has two families of microinverters: the older seventh-generation IQ7 series and the new eighth-generation IQ8 series. IQ8 micros are available in an extensive range of sizes to suit specific panel sizes and voltages, in particular, the more powerful commercial solar panels rated up to 600W.

Why are Enphase micro-inverters installed on each solar panel?

Because of the less than ideal orientation of the solar panels I decided to have Enphase micro-inverters installed on each panel so that each panel operated at the optimum output independently of shading etc of other panels in the system unlike systems where panels are installed in a "string".

Why do schools use Enphase microinverters?

Enphase Microinverters are commonly chosen for schools, since they meet even the strictest government safety requirements. Enphase microinverters come with a 25-year warranty; string inverters need to be replaced at least once in the lifetime of the system. Streamlined components make for quicker and less costly installations.

Where are Enphase microinverters made?

Enphase's micro inverters, renowned for their design in the USA, are manufactured across various global locations, including China, India, Mexico, and Romania. The Australian operations of Enphase are headquartered in Melbourne, Victoria, further solidifying their presence in the global renewable



energy sector. How Do Microinverters Work?

.

How does Enphase solar work?

Enphase solar uses plug-and-play technology to make your installations faster and easier. Everything snaps together with a click—even if you are wearing gloves. Updated IQ Microinverters are now available. Enphase Solar Panel Microinverters are the industry's first grid-forming inverters eliminate battery sizing restriction.



## Enphase micro inverters for solar panels



### What is a Microinverter?

A solar micro-inverter, or simply microinverter, is a plug-and-play device used in photovoltaics, that converts direct current (DC) generated by a single solar module to alternating current ...

### how many micro inverters do i need for a 24 solar panel system?

Micro Inverters Solar Panel System Like Answer Share 2 answers 1.27K views simmons\_3784 Edited September 11, 2022 at 2:00 PM 24 or 1 for each PV panel, thus the term "micro inverter". instead of transferring DC(direct current & BIG WIRES)power from



### [Enphase micro inverters for sale](#)

Enphase Micro Inverters While solar panels are at the forefront of a PV system, it's the inverter that does all the real work. Solar inverter is a power conditioning unit that converts the DC power generated from the solar panels to AC power. The latter is used for

### Enphase Micro Inverters , High-Efficiency Solar Solutions

Unlock the full potential of your solar system with Enphase Micro Inverters. Each micro inverter operates independently to maximise energy production from every panel, ensuring greater efficiency and reliability. Known for their



superior performance and durability



### Sunpower AC Modules

Integrated Enphase IQ7XS microinverters deliver tailor-made performance for SunPower X-Series Solar Modules, a 96-cell PV module with a record-breaking 22.8% efficiency. Read more Choose an option



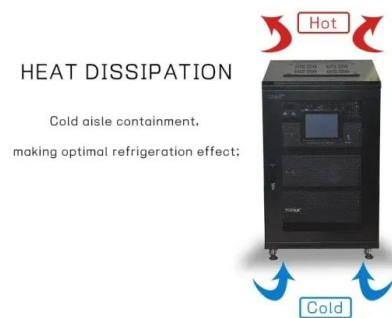
### Micro-Inverters and Solar Panel Optimisers

Again like micro-inverters, they'll add around 15% to your system cost. The array is still matched to the inverter's power rating, so you typically can't just add more panels later. Enphase micro-inverters Enphase is the most well established and respected micro



### Home solar system with microinverter technology Solar

Enphase solar has a plug-and-play design. As your home energy needs grow over the years, an installer can simply plug in more solar panels and microinverters. A bright idea, even in low light If shadows or clouds pass overhead, Enphase IQ Microinverters use





## Solar inverters: pros and cons of string inverters vs. microinverters

Solar inverters have one core function: convert the direct current (DC) solar panels generate into an alternating current (AC) used in your home. There are two main types of home solar inverters: Microinverters attach to the back of each panel and are best for complex solar installations.



## IQ7A inverters for solar panels microinverters , Enphase

Facendo parte dell'Enphase Energy System, l'IQ7A Microinverter si integra con IQ Gateway e con Enphase App. Gli IQ7 Series Microinverter superano gli standard di affidabilità delle generazioni precedenti e sono sottoposti a oltre un milione di ore di prove di accensione, permettendo a Enphase di offrire una garanzia limitata che arriva fino a 25 anni, all'avanguardia nel settore.

## [Micro-Inverters , Solar Mason](#)

Discover the power of solar energy with Enphase micro-inverters from Solar Mason. Our solar panels and inverters are designed for maximum efficiency and ease of installation. Enphase Energy is a global technology company that designs and manufactures energy



## [Enphase Microinverter Systems](#)

Enphase brings you the leading micro inverter, compatible with most solar panels, storage, and powerful monitoring software all from one company. We are an authorised Enphase installer so ensure everything is built to work together, ...



### [Enphase IQ Microinverters](#) , [Enphase](#)

Enphase solar has a plug-and-play design. As your home energy needs grow over the years, an installer can simply plug in more solar panels and microinverters. A bright idea, even in low light. If shadows or clouds pass overhead, Enphase IQ Microinverters use

↑ ESS



### Microinverter Comparison Chart -- Clean Energy ...

The latest models added in 2024 are the new 3-phase IQ8-3P series from Enphase, the new SAJ M2 Series, and the NEO 2000M-X quad micro from Growatt. Since many of these microinverters have just become available, ...



### Enphase Microinverters: An Independent Review by Solar Choice

The versatile Enphase M250 Microinverter™ performs in both residential and commercial solar PV installations and is compatible with both 60-cell and 72-cell modules. With its all-AC ...



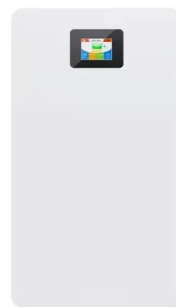


### The Best Solar Inverter: Enphase or SolarEdge?

Enphase Micro Inverters: Enphase is our pick for the best solar inverter. Enphase produces microinverters in different models for different panels. The micro inverters can be mounted in the field or in the factory (AC modules).

#### Reliable solar inverters for solar panels

Enphase Solar Panel Microinverters are the industry's first grid-forming inverters eliminate battery sizing restriction. Get a quote now to get upto 25yr warranty. Maximum power per module. Whether it's leaves, dirt, snow, or cloudy ...



### IQ 7 microinverters for solar systems microinverters , Enphase

Max. inverters per 20 A single-phase circuit: 16  
Max. inverters per 25 A multi-phase circuit: 20  
Faster installation with improved, lighter two-wire cabling State-of-the-art monitoring with the Enphase App More than a million hours of testing Class II double-insulated

### Micro Inverters for Solar Panels: Pros, Cons & Comparison

For example, the Enphase microinverter reports a 1 in 2000 failure rate and they're backed by a full replacement 25-year warranty. While in the case of string inverters, all solar panels ultimately connect to a single string inverter (most of the time eventually





## Enphase Micro Inverter Review - Are They Worth It?



Because micro inverters are attached to each solar panel, each panel operates independently of the rest of the solar array, and DC power is converted to AC immediately on the roof. AC solar modules are solar panels that come with factory-installed microinverters.

### **IQ Microinverter compatibility calculator , Enphase**

Modules paired with Enphase microinverters with integrated ground must use PV wire or PV cable that is compliant with NEC 690.35(D) for ungrounded PV power systems. Do not connect an Enphase microinverter to a module that this calculator indicates is incompatible.



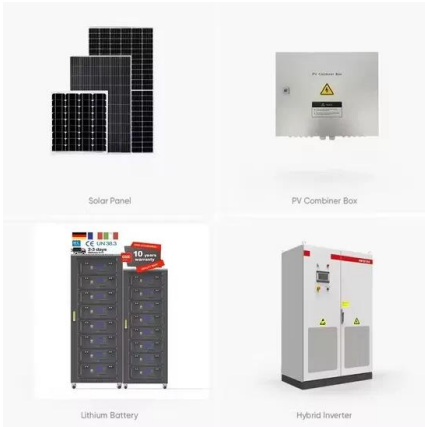
### [Enphase IQ Microinverters , Enphase](#)

The proprietary, intelligent microchip inside every IQ8 Series Microinverter makes switching your home from on-grid to off-grid virtually seamless. All Enphase IQ Microinverters are all-weather ...

### **Microinverters: Everything You Need to Know in 2024**

For example, a typical Enphase IQ8+ microinverter is rated for a peak output power of 300 VA and an input power of 235-440+ W, This means that your panels, solar cells, inverters, battery and EV chargers are designed to work together and are all covered





### Reliable solar inverters for solar panels microinverters , Enphase

Enphase, the world's leading solar power inverter manufacturer, provides high-powered smart grid-ready IQ 7+ microinverters that simplify the installation process while achieving the ...

### Enphase Micro Inverters for Solar

Using the Enphase Micro Inverter system dramatically increases the performance of your solar power system. Enphase IQ System Designed for higher powered modules, the smart grid ...



### Enphase Micro Inverters

The unsung heroes of solar are the Enphase micro inverters, the foundation beneath every solar panel - no matter how great they are. Each panel has its own energy conversion unit that takes the raw Direct Current (DC) from the panel and converts it into usable Alternating Current (AC), for use in your home, office or factory.

### Microinverter Comparison Chart -- Clean Energy ...

Enphase Energy and APsystems are the most well-known microinverter manufacturers, while ZJBeny, Hoymiles & ZJ Beny recently entered the increasingly competitive market. The latest models added in 2024 are the new ...





**200kWh  
Battery Cluster**

**Reliable solar inverters for solar panels microinverters , Enphase**

Enphase, the world's leading solar power inverter manufacturer, provides high-powered smart grid-ready IQ 7+ microinverters that simplify the installation process while achieving the highest system efficiency.



**Enphase Microinverter and Battery Review -- Clean ...**

Enphase Microinverters Quick Summary. Power rating: 240VA to 380VA AC (230W - 540W DC) Latest products: IQ8 Micros, IQ battery 5P, Bidirectional EV charger. Battery compatible - Yes (AC-coupled batteries only) ...

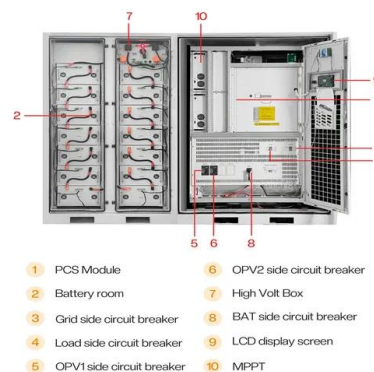
**IQ8+ Microinverter (MC4)**

Part of the Enphase Energy System, IQ8+ Microinverters integrate with the Enphase IQ Battery, Enphase IQ Gateway, and the Enphase App monitoring and analysis software. IQ8+ Microinverters redefine reliability standards with more than one million cumulative hours of power-on testing, enabling an industry-leading limited warranty of up to 25 years.



[Get to know the Enphase microinverter family](#)

The Enphase Energy Microinverter System improves energy harvest, increases reliability, and dramatically simplifies the design, installation, and management of solar power systems. Peak ...





### **Hanwha Q Cells solar panels + Enphase microinverters for home ...**

Q Cells' innovative monocrystalline half-cell technology and the intelligence of the Enphase IQ 7+ microinverters make this a high-performing, smart-grid-ready module. Hanwha Q Cells solar panels + Enphase microinverters for home AC modules , Enphase

## **Contact Us**

---

For catalog requests, pricing, or partnerships, please visit:  
<https://vdbconstruction.co.za>