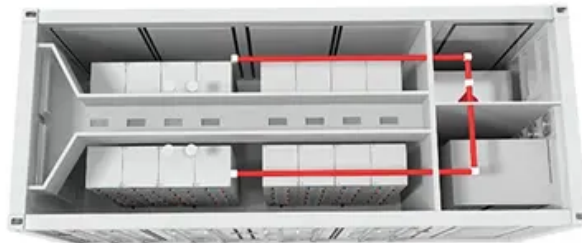


# Es5000 power systems





## Overview

---

What is a Pramac es5000 generator?

The Pramac ES5000 offers a generous fuel tank and basic configuration which makes it the perfect solution for when you need a long lasting professional generator. Pramac ES5000: Providing a long lasting professional power supply, it is a compact generator with a generous fuel tank and basic configuration. Includes: Professional GX Honda engine.

How does the es500 power supply work?

The ES500 power supply includes an adjustable 360 degree digital display and voltage readout. The adjustable screen makes it possible to route your cords in any direction, and then set the screen orientation. The white OLED display provides a bright, crisp readout in any lighting condition, even when the ES500 is covered or bagged.

What is a system 5000 ESU?

For information on. Electrosurgical Generators System 5000™ ESU The System 5000™ is the technology leader in electrosurgery generators. Maximum flexibility allows surgeons to attain a specific clinical effect in most surgical conditions.

What is the es500 dual channel power supply?

The ES500 dual channel power supply is our most innovative ES series power supply to date. With features like omnidirectional display, dual machine ports, Bluetooth capability, a magnetic base and two USB charging ports, the ES500 power supply was designed to adapt to the way you work, anywhere you work. The ES500 does not have an ON or OFF switch.

What is ESS 5000?

ESS 5000 consists of two POWER9 servers, each 2U high and both running Spectrum Scale RAID, controlling either 5U92 standard depth storage



enclosures (the SL models) or 4U106 ultra-dense, deep depth storage enclosures (the SC models.) The ESS 5000 provides a simple way to create a data lake.

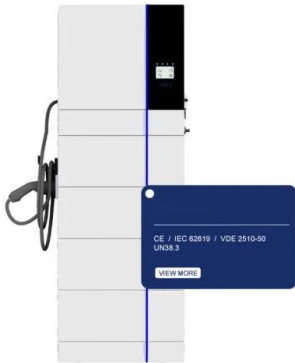
What are the features of the es500 series?

The ES500 series uses a bright panel and adaptive backlight dimming to produce beautiful picture quality in Full-HD. It also boasts great smart networking and content sharing features. \*Design, functions and specifications are subject to change without notice.



## Es5000 power systems

---

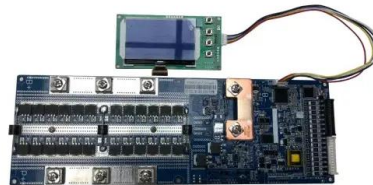


### ES5000 115/230V

Pramac ES5000: Providing a long lasting professional power supply, it is a compact generator with a generous fuel tank and basic configuration. Includes: Professional GX Honda engine. Recoil starting system. Super silent muffler. ...

### Pramac

L'ENERGIE LONGUE DUREE ES5000 230V 50Hz  
#AVR Spécialement étudiée pour les applications intensives, la série ES assure une autonomie et une robustesse particulièrement indiquées pour la location et dans le secteur de la construction. Siège social En



### Pramac

ES5000 230V 50Hz. ?? . ????. ??????. ????????.  
???????(AMF / RSS) ??????. ??????????. ????????. ??.  
Hz. 50. ?? . V. 230. ??????. 1. ????? . ?????? ESP.  
kVA. 5.1. ?????? ESP. kW. 4.6. ???? COP. kVA. 4.2.  
? ...

### [Pramac ES5000 Groupe Electrogène](#)

Pramac ES5000 - 75 kg - 4600W - 69 dB - Groupe Electrogène EUR1.575,00 Pronk Machinery BV Veilingweg 70 1749 EJ Warmenhuizen (Noord-Holland) Nederland (+31) 0226-753742 Service à la clientèle A propos de nous Contactez-nous Expéditions et retours



### Pramac

ES5000 230V 50Hz ?? ???? ????? ???????  
??????(AMF / RSS Company subject to the  
management and coordination of Generac Power  
Systems Inc. V.A.T. 06264860484  
Corporate.pramac



### Clore Automotive ES5000 'Booster PAC' 12V Portable Battery Booster

Bring on the power! With a high performance battery and up to 1500 Peak Amps, the ES5000 is the Booster PAC for professionals who need serious starting power. Multiple jumps between charges and 43 inch cables make the ES5000 as convenient as it is



### Groupe électrogène ES 5000

GRUPE ELECTROGENE ES5000 Groupe électrogène ES 5000 4 kW - PRAMAC Sécurité niveau d'huile. Protection thermique. Protection IP 23. Option : kit brouette et disjoncteur différentiel. Garantie : 2 ans.



### CLORE AUTOMOTIVE 1500 Peak Amp 12-Volt Jump Starter ES5000 ...

A high-powered LED light and LCD screen readout with real-time information helps you work in the dark. The jncair 1700 peak amp 12-volt jump starter with air system from core automotive gives you the ability to jump quickly and easily start your vehicle or

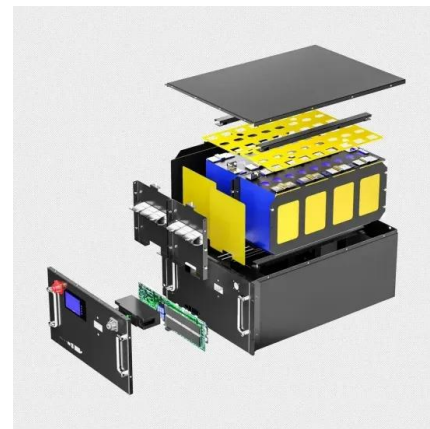


### [Power Systems GENERATOR USER MANUAL](#)

Power Systems Downloaded from manuals search engine English 2 CONTACT INFORMATION For Parts, Service or your nearest distributor call: U.S. and Canada (770) 479 -2922 Latin America (305) 888 -9911 Downloaded from

### ES5000 230V 50HZ #AVR

ES5000 230V 50HZ #AVR LONG RUN ENERGY Modello a Benzina sviluppato da Pramac per garantire un alto livello di qualità e prestazioni ad prezzo interessante. Generatore ideale per applicazioni intensive, caratterizzato da una robusta struttura con



### [Booster Pac Portable Power Supply](#)

The Booster Pac Portable Power Supply is a high-performance battery meant for people who need portable starting power. With features like 1500 Peak Amps, 43 cables and multiple jumps between charges make this portable power supply powerful as well as convenient. This easy-to-use jump starter comes in a rugged case and is compact in size. Though small, it can easily ...



## Booster PAC ES5000 1500 Peak Amp 12V Jump Starter

The ES5000 Jump Starter from Clore Automotive is the everyday workhorse of the Booster PAC line. With a high-performance battery, 43-inch cable reach and automatic charging, it is the perfect jump starter for cars, trucks, boats and more.



## ES5000 230V 50HZ #AVR

ES5000 230V 50HZ #AVR. LONG RUN ENERGY. A petrol generator designed specifically for intensive operations where performance power is demanded by professional user, over an extended period of time. Main Features. Frequency Hz 50 Voltage V 230 Power factor cos ? ...

## Product

Headquarter As a global group, our corporate purpose is to lead the evolution to more resilient, efficient and sustainable energy solutions and have a broad suite of products that supports this energy transition. Località Il Piano snc - 53031



## PRAMAC Lifter ES 5000 Specifications & Technical Data (2004 ...

See detailed specifications and technical data for PRAMAC Lifter ES 5000 manufactured in 2004 - 2021. Get more in-depth insight with PRAMAC Lifter ES 5000 specifications on LECTURA Specs.



## Booster PAC ES5000 1500 Peak Amp 12V Jump Starter

Booster PAC ES5000 1500 Peak Amp 12V Jump Starter The Booster PAC ES5000 is the everyday workhorse of the Booster PAC line. With a high performance battery, 43" long cable reach and automatic charging, it is the perfect jump starter for cars, trucks, boats and more. So rugged and reliable, it is the choice of professionals around the globe as their go-to problem ...

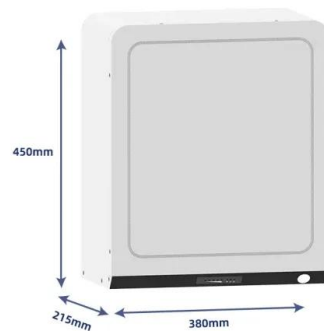


## Pramac S5000 Gebrauchs

Ansicht Und Herunterladen Pramac S5000 Gebrauchs- Und Instandhaltungsanleitung Online. S5000 Generatoren Pdf Anleitung Herunterladen. Seite 1 USO E MANUTENZIONE USO E MANUTENZIONE TORRE FARO TORRE FARO Seite 2: Informazioni Generali

## [Pramac ES5000 Long Run Generator](#)

The Pramac ES5000 generator is powered by the universally proven Honda GX270 industrial engine, the frame Rigid tubular structure, although light, is tough and provides protection for the generator even in tough conditions. Pramac ...



## Pramac ES5000

Il generatore Pramac Power Systems ES5000 è progettato per applicazioni professionali e intensive di lunga durata. Adatto anche per situazione di emergenza. Con AVR (regolatore elettronico della tensione) progettato per ridurre il rischio di danneggiamento di apparecchiatura sensibili.



### Groupe électrogène ES5000 230V 50HZ

Groupe électrogène ES5000 230V 50HZ 1 pièce(s) En stock Voir les stocks Magasin  
Quantité 13 % de remise 1 259,13 EUR HT 1 101,08 EUR HT soit 1 321,30 EUR TTC

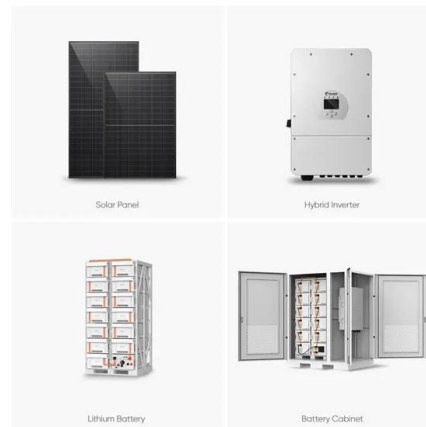


### **ES5000 Booster Pac 1500 Peak Amp 12 Volt Jump Starter**

With a high performance battery and up to 1500 Peak Amps, the ES5000 is the Booster Pac for professionals who need serious starting power. Multiple jumps between charges and 43" cables make the ES5000 as convenient as it is powerful.

### **The ES Series**

How to select the right portable generators? I Identify all the items you want to power at the same time. I Total the Watts for all the items (Amps x Volts = Watts). I Note that electric engines require substantially more Watts (2 to 3 times more) for starting. I Choose a Pramac generator that exceeds the total



### **ES5000 230/115V + HUK**

ES5000 230/115V + HUK. LONG RUN ENERGY. A petrol generator designed specifically for intensive operations where performance power is demanded by professional user, over an extended period of time.



### **Booster PAC ES5000 1500 Peak Amp 12 Volt Jump Starter**

Buy Booster PAC ES5000 1500 Peak Amp 12 Volt Jump Starter - SOR ES5000 online from NAPA Auto Parts Stores. Get deals on automotive parts, truck parts and more. This item is currently not at your store, but is available for order. Please call store to verify

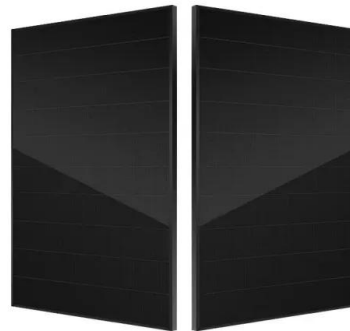


### PRAMAC ES5000 SINGLE PHASE

Maximum power Single-phase: 4.6 KW. Single-phase continuous use power: 3.9 KW. Fuel: Gasoline. Voltage: 230 V. Frequency: 50 Hz. Engine: Honda GX270 Recoil. Starting: Tear-off. Consumption: 2.2 Lt/h at 100% of load. Length: 729 mm.

### **Electrical Power System: What is it? (Power System Basics)**

What is a Power System? An electric power system is defined as a network of electrical components used to supply, transfer, and consume electric power. The supply is done through some form of generation (e.g. a power plant), the transfer is done through a transmission (via a transmission line) and distribution system, and the consumption can be through ...



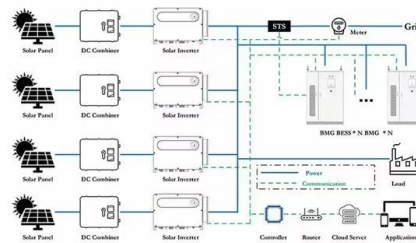
### **Pramac ES5000**

DANGER Carry out all needed connections in compliance with local legislation in respect of safety and security or power /electrical systems, using proper and certified materials, when required. 3. PAGE 11



### Growatt 5000es

Hi All, I have a Growatt SPF5000es with a Dyness A48100. I noticed that after an extended power outage, the battery reaches 20% and the system shuts down as it should. However, when the grid power returned, the inverter did not start up itself. I had to manually switch off the inverter (I/O



### Booster PAC ES5000 1500 Peak Amp 12V Jump Starter and ...



Booster PAC ES5000 1500 Peak Amp 12V Jump Starter Booster PAC ES5000 1500 Peak Amp 12V Jump Starte Clore Automotive Jump-N-Carry JNC660 1700 Peak Amp 12 Volt Jump Starter, Blue The JNC660 delivers 1700 Peak Amps and 425 Cranking Amps of starting power and weighs just 18 lbs. Perfect for a variety of professional starting environments, including ...

### [Growatt Es5000 LiFePO4 Battery : GobelPower](#)

With the Growatt ES5000 LiFePO4 Battery, you can enjoy the benefits of energy independence, lower energy costs, and a reduced carbon footprint. This revolutionary battery system is the perfect choice for anyone looking to take control of their energy usage and contribute to a sustainable future.





### PRAMAC ES5000 THREE PHASE AVR

Single-phase continuous use power: 2.8 KW.  
Maximum power Three-phase: 5 KW. Power  
continuous use Three-phase: 4.3 KW. Fuel:  
Gasoline. Voltage: 230 V / 400 V. Frequency: 50  
Hz. Engine: Honda GX270 Recoil. Starting: Tear-  
off. Consumption: 2.2 Lt/h at 100% of load.

## Contact Us

---

For catalog requests, pricing, or partnerships, please visit:  
<https://vdbconstruction.co.za>