

How big a photovoltaic panel should I use for a 24 volt battery

Highvoltage Battery





Overview

Setting up a fully functioning 24V solar system requires these key components: 340-500W polycrystalline or monocrystalline panels in 24V or 48V nominal voltage ratings. How many watts a solar panel to charge a 24v battery?

You need around 600-900 watts of solar panels to charge most of the 24V lithium (LiFePO4) batteries from 100% depth of discharge in 6 peak sun hours with an MPPT charge controller. Full article: [What Size Solar Panel To Charge 24v Battery?](#)

What Size Solar Panel To Charge 48V Battery?

.

How big should a solar panel battery be?

Your battery for solar panel size should be big enough to hold the average amount of electricity that you sell back to the grid (or over-generate and waste) in one day. Larger capacities are fine, but that's the minimum to consider. Let's say you have a 4 kW solar array. Average year-round peak solar hours in the U.K. are around three and a half.

How many watts a solar panel to charge a lithium battery?

You need around 1600-2000 watts of solar panels to charge most of the 48V lithium batteries from 100% depth of discharge in 6 peak sun hours with an MPPT charge controller. [What Size Solar Panel To Charge 120Ah Battery?](#)

.

How many solar panels to charge a 120ah battery?

You need around 350 watts of solar panels to charge a 12V 120ah lithium battery from 100% depth of discharge in 5 peak sun hours with an MPPT charge controller. Full article: [Charging 120Ah Battery Guide What Size Solar](#)



Panel To Charge 100Ah Battery?

.

How do I choose the right solar battery size?

To pinpoint the right solar battery size, start by checking your daily energy consumption. Then aim for a battery with at least double this usage to ensure you're covered, especially during less sunny days. What is the process for calculating the solar battery capacity needed for a 4kW solar system?

.

How many watts a solar panel to charge a 200Ah battery?

You need around 830 watts of solar panels to charge a 24V 200ah lead-acid battery from 50% depth of discharge in 4 peak sun hours. You need around 1450 watts of solar panels to charge a 24V 200ah Lithium (LiFePO4) battery from 100% depth of discharge in 4 peak sun hours. Full article: [What Size Solar Panel To Charge 200Ah Battery?](#)



How big a photovoltaic panel should I use for a 24 volt battery



Solar Battery Size Calculator: What size battery do I need?

What size solar panel array do you need for your home? And if you're considering battery storage, what size battery bank would be most appropriate? This article includes tables that provide an at-a-glance guide, as ...

What Size Fuse Do I Need for My Solar Panels? Types & Calculate

What Size Fuse for 100W Solar Panel? If you're wondering what size fuse for 100W solar panel, the answer is 15 amps. This is because the maximum current that a 100W ...



How to Choose the Right Size Solar Panel for a 24 Volt Battery?

However, choosing the right size solar panel for your system can be challenging, especially when it comes to ensuring compatibility with a 24-volt battery. What Factors Should ...

[What Size Solar Battery Do I Need?](#)

But while sizing a solar system is pretty straightforward, choosing a battery size takes a bit of nuance and largely depends on how you plan on using it. In this article, we'll explore the nuances of sizing a solar ...



What size solar panel do I need to charge a 12v ...

This calculation brings us to the size of the solar power system we would need to appropriately power our 12v battery system while including daily consumption. Combining Solar Panels for 12-Volt Battery Systems. If ...



The Complete Off Grid Solar System Sizing Calculator

The size, or Wattage, of your solar panel array depends not only on your energy needs but also on the amount of sunlight that's RICH SOLAR 600 Watt 12 Volt 3 Pcs 200W Panel+40A MPPT Charge Controller+ ...

Commercial and Industrial ESS

Air Cooling / Liquid Cooling

- Budget Friendly Solution
- Renewable Energy Integration
- Modular Design for Flexible Expansion



[What Size Solar Panel to Charge 12V Battery?](#)

What Size Solar Panel to Charge 12V Battery: A 150-watt solar panel can charge a 100 Ah battery in 10 hours. Close Menu. About; EV; FAQs; Glossary; Green. What ...





What Size Solar Panel To Charge 100Ah Battery?

100Ah 12V Lithium Battery Solar Panel Size:
100Ah 12V Deep Cycle Battery Solar Panel Size:
100Ah 12V Lead-Acid Battery Solar Panel Size: 1
Peak Sun Hour (4.8 Normal Hours): 1.080 Watt
Solar Panel: 960 Watt Solar Panel: 600 ...



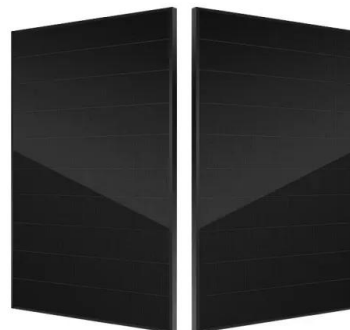
Choosing and Sizing Batteries, Charge Controllers and

This can be 12, 24 or 48 for commercial application. If we choose to use 48V, the minimum AH capacity is then $10\ 800/48 = 225$ AH. Now if you divide by your battery's rating you find the ...



[The Solar Wire Size Calculator](#)

You can use our Solar Wire Size Calculator to select the proper wire for your needs. Below you will find a detailed explanation on how to use the calculator, and how it selects the proper wire ...



[What Size Solar Charge Controller Do I Need](#)

For a 1000-watt solar panel, you will have to use a 24v battery. Otherwise, it will draw a current above 60 amperes, and solar charge controllers above 60-ampere ratings get expensive to ...





Solar Panel Fuse Calculator: How to Determine the Required Fuse Size

Also See: What is Vmp in Solar Panels? What Size Fuse for 120W Solar Panel? Now, to determine the fuse size for a 120W solar panel, you can use the formula: Fuse ...








[Solar Panel Size Calculator](#)

Use our solar panel size calculator to find out what size solar panel you need to charge your battery in desired time. Simply enter the battery specifications, including Ah, volts, and battery type. Also the charge controller ...

What Size Solar Panel For 24 Volt Battery: A Complete Guide To ...

To choose the right size solar panel for your 24-volt battery system, first calculate your daily energy consumption in watt-hours. Then, consider the peak sunlight hours ...

 TAX FREE    


Product Model
HJ-ESS-215A(100KW/215KWh)
HJ-ESS-115A(50KW/115KWh)

Dimensions
1600*1280*2200mm
1600*1200*2000mm

Rated Battery Capacity
215KWH/115KWH

Battery Cooling Method
Air Cooled/Liquid Cooled

ENERGY STORAGE SYSTEM



[How to Properly Fuse Your Solar System](#)

Moreover, the fuse or breaker should be placed as close to the battery as possible. This minimizes the risk of wire damage between the charge controller and the battery in the event of a short circuit. To calculate the ...



Solar Panel Battery Storage: Can You Save Money Storing ...

Without solar panels, you could use a battery to make the most of a time-of-use tariff by storing up electricity while it's cheap (overnight, for example) to use during peak times. ...



[Motorhome solar panels: the ultimate guide](#)

Our guide talks you through the key points you need to consider when you're looking to choose the best solar panel for your motorhome. Reviews; Advice; 68Ah and ...

Size Matters: Choosing Solar Panels to Keep Your RV's Batteries ...

June 3, 2024 April 24, 2024 by Jesse. and solar panels are an excellent solution. However, selecting the right size solar panel for your RV battery is crucial to ensure you have enough ...



[Fitting a Solar Panel to your Campervan](#)

Recommended solar panel. 10W solar panel kit for trickle charging a 12v battery; 50W solar panel for small loads & light use; 100W solar panel for heavy loads & frequent use



How to select a solar charge controller for your PV ...

This makes it possible to use different solar PV panels which may cost less or be more optimal in size. For example, 60-cell cost less than 36-cell modules and are a more manageable size for mounting than larger 72-cell ...



How to calculate your solar power requirements

Which solar panel size to charge a 200AH battery? If you have a large 200AH lithium battery, the calculation would be as follows: 200AH Lithium Battery x 12V = 2400WH ...

What Size Solar Panel Do I Need to Charge a 12 Volt Battery?

What Size Solar Panel to Keep Car Battery Charged? If you have a car, you know that one of the most important parts of owning a vehicle is keeping the battery charged. ...

Energy storage(KWh)

102.4kWh

Nominal voltage(Vdc)

512V

Outdoor All-in-one ESS cabinet



solar panel batteries, solar power battery, a complete guide

Deep cycle solar power batteries are the best solution for battery storage. They look similar to car batteries, but are actually very different. In contrast to car batteries which only provide short ...



What Size Solar Panel To Charge 24v Battery? (incl. Calculator)

The size of the battery you need typically depends on how many bedrooms your home has, and how much electricity you use each month. It's generally better to buy an oversized battery, but make sure you have a solar ...



How to Size a Solar System [Step-by-Step Guide]

If your solar panel's performance warranty guarantees 80% performance after 25 years, then their degradation rate is calculated as 20%/25 years, or 0.8% production loss each year. By the end of its lifecycle, a 400W-rated panel ...

[What Size Solar Battery Do I Need?](#)

What size solar battery do I need? We explore the nuances of sizing a solar battery and how to determine the right size for your goals. 24: 1.5 kWh: Sleep apnea machine (CPAP) 200 Watts: 8: 1.6 kWh: LED lights: 38 ...



Choosing the Right Size Solar Panel for Your Campervan

Several factors influence solar panel sizing, including solar panel wattage, efficiency, surface area, climate and sunlight exposure, and battery storage capacity. Solar panel wattage is the ...





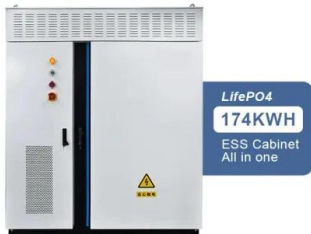
Solar Panel Sizes & Dimensions UK (2024)

The size of a solar panel should be chosen based on factors such as available space, energy needs, and budget. Solar panels can be combined to create larger systems, ...



Solar Charge Controller Sizing and How to Choose One

Solar charge controllers play an integral role in solar power systems, making them safe and effective. You can't simply connect your solar panels to a battery directly and ...



What Size Solar Panel Needed To Charge 12 Volt Battery: Key ...

Discover how to choose the right size solar panel to effectively charge a 12-volt battery in this comprehensive guide. Learn about crucial factors like battery capacity, charging ...



What Size Solar Battery Do I Need? ? Guide (2024)

How can you figure out the proper size of a solar battery for your home? To pinpoint the right solar battery size, start by checking your daily energy consumption. Then aim for a battery with at least double this usage to ensure ...





Calculate Battery Size For Any Size Inverter (Using Our ...

Battery size chart for inverter. Note! The input voltage of the inverter should match the battery voltage. (For example 12v battery for 12v inverter, 24v battery for 24v inverter and 48v battery for 48v inverter



Contact Us

For catalog requests, pricing, or partnerships, please visit:
<https://vdbconstruction.co.za>