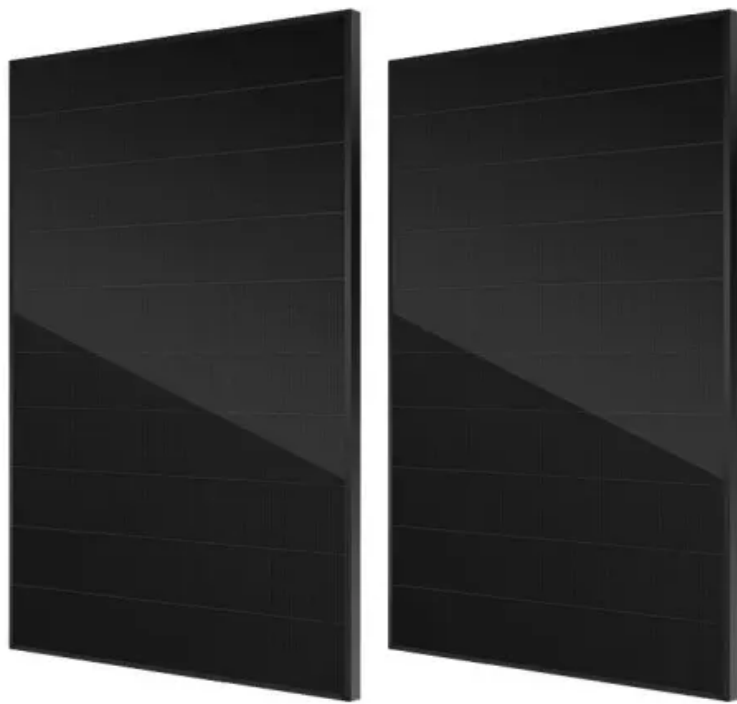


How big a wire should I use for a 15 watt photovoltaic panel





Overview

How many amps can a solar panel use?

Based on your requirements and relevant parameters, you can utilize various DC and AC solar cable sizing calculators to determine the suitable wire size for your solar power system. Commercial panels over 50 watts use 10 gauge wires, allowing up to 30 amps per solar panel.

How many amps does a 100W solar panel output?

A typical 100W solar panel outputs about six amps of current. As a result, you can use a 14 AWG wire for a 100W panel. What is the best wire for a solar setup?

Pure copper wires are the best for a solar system. These wires can safely transmit more amps than copper-clad wires. Make sure your wires are also 'marine grade.'

How many volts does a solar panel produce?

Usually 12, 24, or 48 volts. Enter the total Amps that your Solar Panels will produce all together. Enter the distance in feet from your Solar Panels to your Battery Bank / Charge Controller. Click on 'Calculate' to see the size wire required in AWG (American Wire Gauge). Enter the output voltage of your Solar Panels.

What size cable do I need for a 24V solar panel?

For instance, for a 24V panel, if you have a 10 Amp load, and need to cover a distance of 100 feet with a 2% loss, you calculate a VDI value of 20.83. So, based on this table data, you will need a 4 AWG cable. Cross-Reference: [Selecting wire size based on voltage drop for solar systems Can I Use a 2.5 mm Cable for Solar Panels?](#)



How do I calculate a solar panel wire size?

Just like water in a pipe, the smaller the pipe, the less water that can pass through it. To use the Wire Size Calculator, just follow these 4 simple steps: Enter Solar Panel output voltage. Usually 12, 24, or 48 volts. Enter the total Amps that your Solar Panels will produce all together.

How to calculate the wire thickness for solar panels?

Now we need to adjust the wire size diameter for the voltage drop to become less than 3%. In this case, we will need a 12AWG or 4mm² wire. There you have it! That's how you calculate the wire thickness for solar panels. If you have these two solar panels wired in parallel, you double the current instead of the voltage.



How big a wire should I use for a 15 watt photovoltaic panel



What size wire should I use for my LED light bar - Nilight

What size wire should I use? A1: When we think about wire size, it's pretty simple. The 16 gauge is a car wire that is large enough to support 6 amps, given the distance ...

Solar Panel Wire Size (Cable Gauge + Calculations ...

Table 1: Solar panel cable for amp chart for 90°C (194°F) Copper. Amperage tables exist for copper cables reflecting the current carrying capacity of the different gauge cables at different operating temperatures.



What Size Wire Do I Need For A 200-Watt Solar Panel?

When wiring a 200-watt solar panel, the wire size depends on the amount of electricity produced and the distance between the panel and the charge controller.

How to Choose a Correctly Sized MPPT Charge Controller

You would never use a PWM charge controller for a home or cottage. Any kind of portable solar system being used to charge devices on a trip likely isn't worth the added ...



400W Solar Panel Kit (DIY): What Size Battery, Charge controller?

Battery Bank Size (Ah) = (Solar panel total watt-hours (Wh)/solar panel voltage) x 2 (for lead-acid battery type) Now let's put the values which we have calculated before. ...



[Online Wire Size Calculators & Tables](#)

To calculate ground wire size, use the Ground Wire Size Calculator. Insulation - Select the thermal rating of the insulation on the wire. Conductor - Choose the material used as a ...



Low Voltage Lighting Wire Size Calculator - Calculator

What size wire do I need for a 60-watt bulb? The wire size for a 60-watt bulb changes with the system's voltage and cable length. Usually, a 16-gauge wire (1.5 mm²) works ...





How To Check You Have The Right Cable Size , Lampfix

4. Work out the conductor size. Now you know the Current, you can work out the cable conductor size you need from the table below. In our example, we know we need a ...



TAX FREE

Product Model
HJ-ESS-215A(100KW/215KWH)
HJ-ESS-115A(50KW 115KWH)

Dimensions
1600*1280*2200mm
1600*1200*2000mm

Rated Battery Capacity
215KWH/115KWH

Battery Cooling Method
Air Cooled/Liquid Cooled



Calculate Battery Size For Any Size Inverter (Using Our ...

Battery size chart for inverter. Note! The input voltage of the inverter should match the battery voltage. (For example 12v battery for 12v inverter, 24v battery for 24v inverter and 48v battery for 48v inverter

Fuse Size Calculator

Consult Section 310.15(B) of the National Electrical Code (NEC) for ampacity correction factors where the ambient temperature is other than 30°C (86°F). Solar panel tilt angle calculator; Amp hours to watt hours conversion ...

Highvoltage Battery



Microwave Breaker Size: Wire & Outlet for Microwave Ovens

Microwaves that use 600 to 900 watts can get by with a 15-amp breaker or outlet, but microwaves that use over 900 watts or higher should have a 20-amp breaker or ...





What Gauge Wire Should I Use for Lights and Outlets? , Hunker

As the wire size amp rating chart at Cerrowire states, under normal household temperature conditions, the maximum current rating for a 14-gauge wire is 15 amps, while that ...



[What Gauge Wire for 100 Watt Solar Panel](#)

When calculating wire gauge, there is not necessarily a "one size fits all" for 100-watt solar panels. The wire gauge needs to be calculated in accordance with your solar array. ...

Wire Size Guide for Solar PV Systems (How To Calculate)

After adding 25%, the resulting amount is what we will use to determine the solar wire size you need for section 2. Example: A 30A controller will output a maximum 30A ...



[What Size of Wire to Run to a Shed or Barn?](#)

The wire size needed for a 15 Amp circuit will depend on how far the circuit travels. For example, if a circuit will only use 25 feet or less, a 14/2 with ground will work just ...



12V Wire Size Calculator + Chart: What Size Wire You Need?

Min. Ampacity (150W) = $12.5A \times 1.25 = 15.63A$;
That means we need a wire size with an ampacity of 15.63A or higher. To choose the correct AWG wire size for a 12-volt circuit, ...



[Inverter Wire Size Calculator Online](#)

Inverter Power (Watts): This is the maximum output power of your inverter. **Voltage (Volts):** This is the DC voltage of your battery bank. **Cable Efficiency:** This is a value (usually between 0.95 and 1) that represents the ...

MPPT charge controller calculator: Find the right solar charge

What size wire between solar panels and MPPT?
What I'm trying to say is, yes, you can add a 450 Watt solar panel in parallel to your array. Hope this helped! Lucy. April ...



Wire & Breaker Size for Electric Stoves, Wall Ovens, & Cooktops

Because most electric stoves require a 50 amp circuit breaker, using #6-gauge wire is very common. For most stoves, you'll want to go with a 6/3-gauge cable, which has four ...



[Solar Panel Wire Size Calculator](#)

What size wire should I use for 100 watt solar panel? For a 100-watt solar panel, the appropriate wire size will depend on the maximum current rating of the panel and the distance between the panel and the charge ...



Type of Wire Used for Solar Panels? (Best + Installation)

Today we look at the best wire to use for solar panels. The difference will protect you and your panels and produce a better return. The solar panel voltage is around 15 volts, ...

[The Solar Wire Size Calculator](#)

You can use our Solar Wire Size Calculator to select the proper wire for your needs. Below you will find a detailed explanation on how to use the calculator, and how it selects the proper wire ...



How to Wire a Subpanel: the Top Tips for Wiring a Subpanel

Use the Correct Size Subpanel Feeder Wire The hot wires in the feeder cable that connect the subpanel to the service panel attach to the hot lugs in the subpanel. The ...



Wire Gauge For 15 Amp Service + 15 Amp Breaker Wire Size

Here you will get an easy-to-use 15 Amp Service Wire Size Calculator, complete with a copper wire size chart for 15 amp service for 12V, 120V, and 220V circuits at 3% and 10% allowable ...



Contact Us

For catalog requests, pricing, or partnerships, please visit:
<https://vdbconstruction.co.za>