

# How big an inverter should I use for a 100kw photovoltaic panel





## Overview

---

You'll generally need an inverter that's 75% as big as your solar panel system's kilowatt-peak (kWp), which is how much solar energy it produces at standard test conditions. How do I choose a solar inverter size?

To calculate the ideal inverter size for your solar PV system, you should consider the total wattage of your solar panels and the specific conditions of your installation site. The general rule is to ensure the inverter's maximum capacity closely matches or slightly exceeds the solar panel array's peak power output.

How much power does a solar inverter need?

Because your solar inverter converts DC electricity coming from the panels, your solar inverter needs to have the capacity to handle all the power your array produces. As a general rule of thumb, you'll want to match your solar panel wattage. So if you have a 3000 watt solar panel system, you'll need at least a 3000 watt inverter.

Are solar inverters rated in Watts?

Like solar panels, inverters are rated in watts. Because your solar inverter converts DC electricity coming from the panels, your solar inverter needs to have the capacity to handle all the power your array produces. As a general rule of thumb, you'll want to match your solar panel wattage.

How much solar power can a 5kw inverter produce?

Under the Clean Energy Council rules for accredited installers, the solar panel capacity can only exceed the inverter capacity by 33%. That means for a typical 5kW inverter you can go up to a maximum of 6.6kW of solar panel output within the rules.

Do I need a 3000 watt solar inverter?

As a general rule of thumb, you'll want to match your solar panel wattage. So



if you have a 3000 watt solar panel system, you'll need at least a 3000 watt inverter. Need help deciding how much solar power you'll need to meet your energy needs?

Use the Renogy solar calculator to determine your needs.

Do solar panels need inverters?

Without appropriately sized inverters, your expensive solar panels will be futile. These intelligent devices also optimize energy harvesting from the solar PV system by maximizing production through MPPT (maximum power point tracking).



## How big an inverter should I use for a 100kw photovoltaic panel

---

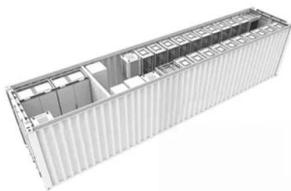


### Understanding Solar Inverter Sizes: What Size Do You Need?

What Is the Most Common Solar Inverter Size for Home? In Australia, the most common solar inverter size for the home is 5 kW or 6.6 kW. Some homeowners opt for 2 kW ...

### A Guide to Solar Inverters , How much do they cost? , Eco Experts

Solar inverters convert solar panel electricity so it can be used in your home; A standard string inverter will typically cost £500-£1,000; Microinverters usually cost £100-150 ...

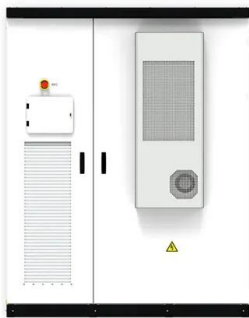


### How Many Batteries Do I Need for a 100 Watt Solar Panel?

A safe bet would be to have a 10-amp charge controller for a 100W solar panel with a 12V battery bank. Inverter. Inverters work to convert the electricity flowing from your ...

### Optimize Your Solar Setup with Our Inverter Size ...

Our Inverter Size Calculator is designed to help you determine the appropriate size for your solar system's inverter. This guide will take you through each step to ensure you get accurate and useful results.



### [Solar PV Inverter Sizing , Complete Guide](#)

Before selecting an appropriate inverter size, there are several key factors to consider, including the total system size (DC wattage of all solar panels), expected energy consumption (daily and peak usage in kW), future expansion ...

### 100kW Solar System: Price, Load Capacity, How Big, and More

To reach the 100kW capacity, you will need a sufficient number of solar panels. Most panels have a capacity of 300 watts, meaning you will need 333 or more panels to ...



### Solar Panel Battery Storage: Can You Save Money Storing ...

In our 2024 survey of more than 2,000 solar panel owners, 43% of them also had a battery. Many others said they'd add a battery if they were installing their system now. Without solar panels, ...



## Recommended Inverter Cable, Breaker & Fuse Sizing

Larger cables may be used if the distance from your inverter and battery banks is more than 10 feet (~3m). altE offers battery cables ranging from 1/0 to 4/0 AWG in a variety of lengths for both ...



### Application Note: Determining the Circuit Breaker Size

Multiply the inverter's maximum continuous output current by the factor. For example, 40A x 1.25 = 50A. Round up the rated size, as calculated in step 1, to the closest standard circuit breaker ...

### calculate inverter size for solar + Sizing Formula

2. Calculate Solar Panel Output. Determine how many watts and the number of solar panels you will be installing. For example, assume you have eight 350W panels, then your total wattage would be (8 \* 350W = ...



### What Size Inverter Do I Need for a 100 Watt Solar Panel

You will also find a quick and easy guide for calculating what size inverter you need, and different types of inverters. You will also find out which batteries and solar charge ...



### What Size Inverter Needed for Solar Panels?

The size of an inverter is typically determined by the amount of power it can deliver. For example, a small inverter might be able to provide 1,000 watts of power, while a ...



### **How to Calculate Solar Panel, Battery, and Inverter Size**

- Step 1: Turn on all the appliances and devices you want to power with the solar panel system.
- Step 2: Use a clamp meter to measure the current consumption in amps (A) by clamping it ...

### **Solar Cable Size Selection Guide For PV Plants**

1. Solar Panel PV Wire. It is a well-known solar power wire that is used for connecting cabling in photovoltaic installations. The XLPE cable insulation provides remarkable resistance to ozone, ultraviolet radiation, and ...



### **Size your solar system**

Inverter sizing. In many systems, the inverter is sized to be smaller than the panel output. For example, a 6.6 kW solar system is often paired with a 5 kW inverter. Because the panels are ...





## The expert guide to solar panel inverters & costs [UK, 2024]

Microinverters are significantly more expensive than string inverters when you start thinking about them on a whole-system basis. If a solar panel system comprising 12 ...



### How to pick the right Inverter: Guide from Naked Solar

One of the disadvantages of string inverters is that if there is a fault or shading on one panel in the string, it will affect the performance of all the panels on the same string. In a microinverter system each panel has an inverter all to itself. Each ...

### What size inverter do you need for a 100ah battery?

For example, a 12v 100aH battery  $12 * 100 = 1200W$  So the maximum ideal inverter size for 12V 100aH battery is a 1.2KW inverter. If it's a 12V 200aH battery  $12 * 200 = 2400W$  So the maximum ideal inverter size for ...



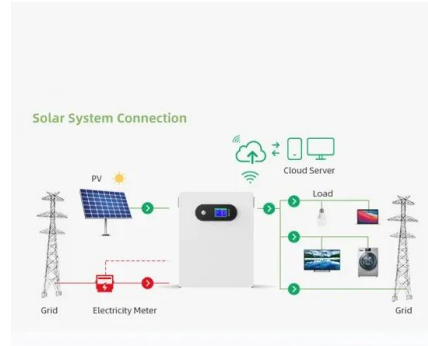
### [Solar Panel Inverter Size Calculator](#)

What size inverter do I need for a 400w solar panel? A 400W solar panel would typically require an inverter that can handle at least 400W. It's recommended to go slightly ...



### [Inverter Wire Size Calculator](#)

Check The Inverter Store's handy calculator and guide that breaks down the complex process for you easily. Learning what cable to use for an inverter is a vital step in the process of powering ...



### How to Calculate Solar Panel, Battery, and Inverter Size

It's essential to select an inverter with a continuous power rating that meets or exceeds your daily energy needs and a peak power rating that can handle any startup surges from your appliances. In general, your inverter capacity should ...

### Sizing the DC Disconnect for Solar PV Systems

The AC disconnect may be a breaker on a service panel or it may be a stand-alone switch. The AC disconnect is sized based on the output current of the inverter and will be looked at in ...



### How to size an inverter that can run your air conditioner?

This means that the inverter that could run this unit needs to have a Continuous Power rating of more than 455 watts. So, a 500W inverter should do the trick, right? The ...



## Solar panels

Use our solar panel calculator to get an idea of what size system is right for you. Get quotes from at least three installers. Make sure the installers you look at are MCS-certified, which ensures they adhere to a strict ...



## How Do I Calculate What Size Inverter I Need?

Having the right size inverter is vital for operating your appliances and devices properly. An undersized inverter will overload and potentially fail when trying to meet higher ...



## What Size Solar Inverter Do You Need for Solar ...

Inverter Size (watts) = Solar Panel Rating (watts) / Inverter Efficiency (%) For example, if you have a 6 kW (6,000 watts) solar array and the inverter efficiency is 96%, you would need an inverter with a capacity of at ...



## [How To Size A Solar Inverter in 3 Easy Steps](#)

Depending on where they fall in that band and the size of their solar array, they will likely use a 3, 5, or 10kW inverter. Considering Surge Watts and Voltage Drop You also need to consider surge watts and voltage drop.





### [How to Size an Inverter for a Solar System](#)

The optimal solar inverter size depends primarily on the power rating of the solar PV array. You need to match the array's rated output in kW DC closely to the inverter's input capacity for maximum utilization.



- IP65/IP55 OUTDOOR CABINET
- OUTDOOR MODULE CABINET
- OUTDOOR 5G BASE STATION CABINET
- WATERPROOF

### **The Complete Off Grid Solar System Sizing Calculator**

The power inverter. Simply follow the steps and instructions provided below. PS: For more information, I recommend checking out this detailed guide on sizing and ...

## **Contact Us**

---

For catalog requests, pricing, or partnerships, please visit:  
<https://vdbconstruction.co.za>