

How big and heavy are the photovoltaic panels of 660





Overview

As you can imagine, you can get almost any size solar panel you desire, from single tiles to ones that cover the entire roof. There are even companies that will craft custom and bespoke solar panels for your roof. However, if you have a particularly small roof there's no need to be too worried as you can still install solar.

The majority of solar panels for sale in the UK average around 350 watts (W) in power for residential units. However, it's quite easy to get your hands on more powerful solar panels.

If you have a small home or want to power mobile vehicles like caravans and campervans, the good news is that there are many smaller-sized.

Below we have detailed some of the most common solar panel installations in the UK for domestic properties. Please note that both the costs and final.

How much energy does a 60 cell solar panel use?

A typical US home consumes 877 kWh monthl y. To replace everything with solar, you need a 6.5 kWh solar panel. 60 cell solar panels come in different sizes, ranging from 285 watts to 375 watts. For example: The solar cells vary, but the size of the individual cells are always 6 x 6 inches.

What is the size of a solar panel?

The size of a solar panel is measured in watts, which indicates the amount of power it can generate. The most common solar panel sizes for residential installations are between 250W and 400W, while larger commercial installations may use panels up to 500W or more.

How much does a commercial solar panel weigh?

Commercial solar panels tend to be about a foot longer than residential solar panels at 6.5 feet by 3 feet and can weigh 50 pounds or more. The exact size of residential and commercial solar panels depends on the manufacturer and their specifications.



How much power does a solar panel produce?

These include power output, physical dimensions, and weight to ensure optimal energy generation. The average domestic solar panel outputs 250-400 watts, with physical dimensions around 1.7m in length and 1m in width, weighing 18-20kg. Proper sizing is crucial for efficiency and meeting energy goals.

What size solar panels do I Need?

6kW system (for a four- or five-bedroom home) – 16 x 350W panels or 13 x 450W panels. Besides size and dimensions, solar panel power output is also determined by the energy efficiency of the system. Solar panel efficiency is the percentage of daylight turned into electricity.

Is solar panel size the same as solar array size?

As such, solar panel size shouldn't be confused with solar array (or, if you prefer, solar system) size.



How big and heavy are the photovoltaic panels of 660



Understanding Solar Panel Efficiency Ratings: What it Means

A solar panel's degradation rate, typically 0.5-1% per year, indicates the expected annual decline in efficiency throughout the panel's lifespan (National Renewable ...

How Much Does a Solar Panel Weigh? - Solar Panel Facts

How much does a solar panel weigh? Go through the article below to learn more about this topic. Skip to content. How Heavy Are Solar Panels. How Big Are Solar ...

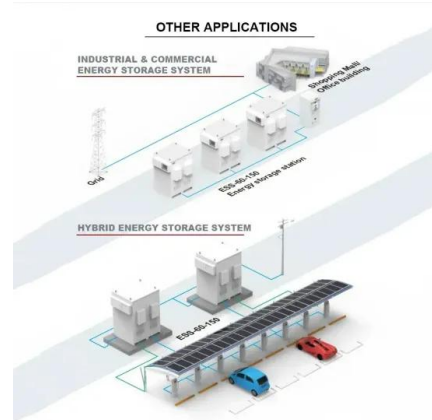


Canadian Solar 660 Watt Solar Panel Price in Pakistan

Heavy snow load up to 5400 Pa, wind load up to 2400 Pa* Document: Canadian 660W HiKu7 Mono PERC Solar Panel. Product Details: OVERVIEW:Explore all Longi Solar Panel price ...

[Solar Panel Dimensions Sizes and Wattage](#)

Monocrystalline solar panels. They comprise monocrystalline silicon cells, which offer high efficiency and a neat aesthetic (black-colored cells).Their dimensions vary ...



[How Big Are Commercial Solar Panels?](#)

The average solar panel size for commercial use is 72 cells, approximately 78x39 inches. Panels this size produce 350-400 watts, making them ideal for large-scale solar installations. The 72 ...

Bifacial solar panel Canadian Solar 660W - BiHiKu7

It has a hot spot temperature that is 40°C lower than traditional solar panels, reducing the risk of module damage. The panel can withstand heavy snow loads up to 5400 Pa and wind loads up ...



How Big is a Solar Panel? , Get the Facts with this Guide

Anker Solar Panel 625 is an excellent and revolutionary solar panel that weighs only 11 pounds or 5 kilograms. This portable, foldable, and adjustable solar panel has a cell ...





Sunshine Solar Panels 160W 12V Crystalline

Our 160W solar panel is the most powerful of the Sunshine Solar range for 12V battery charging if you are looking for faster power generation this solar module will deliver. The high wattage ...

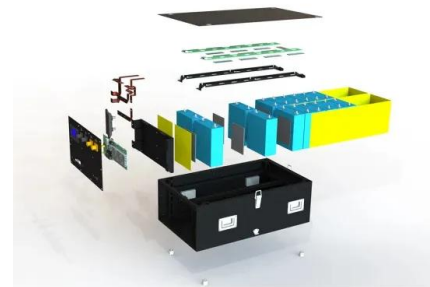


Solar panel sizes and wattages , The Independent

Remember, one standard-sized 350W solar panel takes up 1.89m² of precious roof real estate, with more powerful panels hogging yet more - so it's a good idea to make ...

How Big Are Solar Panels? Understanding Solar Panel ...

How big are solar panels? The size and cell configurations of solar panels play a critical role in determining their suitability for different applications, ranging from residential rooftops to vast commercial ...



Solar Panel Size

Choosing the right solar panel size for your home involves a few considerations. These include power output, physical dimensions, and weight to ensure optimal energy generation. The average domestic solar panel outputs ...





Solar Panel Size and Weight: How Big Are Solar Panels?

Solar panels generate clean energy and significant savings, but they aren't a one-size-fits-all solution. The size and weight of solar panels vary depending on the make and ...



Guide to Solar Panel Sizes & Dimensions (November ...

Solar cell dimensions are typically around 189 x 100 x 3.99cm (6.2 x 3.28 x 0.13 feet), while solar panel dimensions are usually between 1.6m² to 2m² (17.22 to 21.53 square feet). The physical size of the solar panel is ...

How Big Are Solar Panels? A Guide for UK Homeowners

? A typical solar panel measures approximately 1.6 meters long and 1 meter wide. But before you dive into the world of solar energy, it's important to understand the ...



[Panel solar 660W , Risen , RSM132-8-660M](#)

Garantía Panel solar 660 W Risen. Modelo: RSM132-8-660M: Garantía: Garantía de Producto: 12 Años: Garantía de energía: 10 años de 90% potencia de salida, 25 años de 84.8% potencia ...



[Solar Panel Sizes and Wattage Explained](#)

Best Solar Panel Sizes and Wattage Calculator. This curated list includes top-brand calculators for determining panel size, output and battery capacity for your system along ...



[660W Datasheet Vertex DE21 EN 2020 PA4 web](#)



DIMENSIONS OF PV MODULE(mm) Corriente (A)
Potencia (W) Voltaje (V) Voltaje (V) Voltaje (V) 0
10 20 30 40 50 200W/m" 400W/m" 1000W/m"
800W/m" 600W/m" Corriente (A) 0 10 20 30 ...

End-of-Life Heavy Metal Releases from Photovoltaic Panels and ...

Solar photovoltaic panels (PV) as a clean, available and inexhaustible renewable energy source has been incorporated into different key industrial sectors to replace ...



(PDF) Potential for leaching of heavy metals and metalloids from

Photovoltaics (PV) are a rapidly growing technology as global energy sectors shift towards "greener" solutions. Despite the clean energy benefits of solar power, ...





660 Watt Canadian Solar Panel

660 Watt Canadian Solar Panel MORE POWER. Module power up to 670 W Module efficiency up to 21.6 %. Up to 3.5 % lower LCOE Heavy snow loads up to 5400 Pa, wind load up to 2400 Pa*. WARRANTY. 12-year Enhanced ...



Photovoltaic module TW Solar 660W Silver Frame

TW Solar is a commitment to the research and development of solar energy products, a state-of-the-art company with many years of experience, with a high degree of technological ...



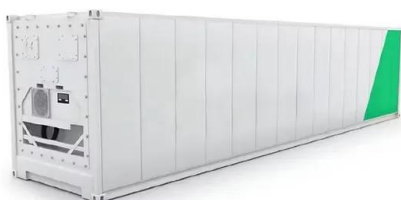
Solar Panel Sizes, Dimensions & Weight

Solar panels also come with 72 solar cells, which are larger to accommodate the additional cells. They are around 30% larger than residential solar panels, measuring approximately 2.1m tall x 1.1m wide (or 2.3 m2).



Solar Panel Size Guide (with 4 Charts)

Q CELLS 60 Cell Solar Panel: 65.8 x 39.4 inches: 41 lbs: Q CELLS 72 Cell Solar Panel: 78.5 x 39.4 inches: 52.9 lbs: Hyundai PERL Monocrystalline Solar Panel 60 Cells 60 cells: 64.5 x ...





Standard Solar Panel Sizes And Wattages (100W ...

That's basically a 66×39 solar panel. But what is the wattage? That is unfortunately not listed at all. 72-cell solar panel size. The dimensions of 72-cell solar panels are as follows: 77 inches long, and 39 inches wide. That's a ...



[Trina Solar 660w Solar Panel](#)

Key Features: High Power Output: Generates 660 watts of power, ideal for large-scale solar installations and maximizing energy production per unit area. Monocrystalline Technology: ...

[Polycrystalline Solar Panels](#)

The panels are constructed with a heavy duty anodised aluminium Width of panel (mm) 285 350 350 660 660 660 680 Fixing holes distance (mm) 251 315 315 626 626 626 648 The ...



Contact Us

For catalog requests, pricing, or partnerships, please visit:
<https://vdbconstruction.co.za>