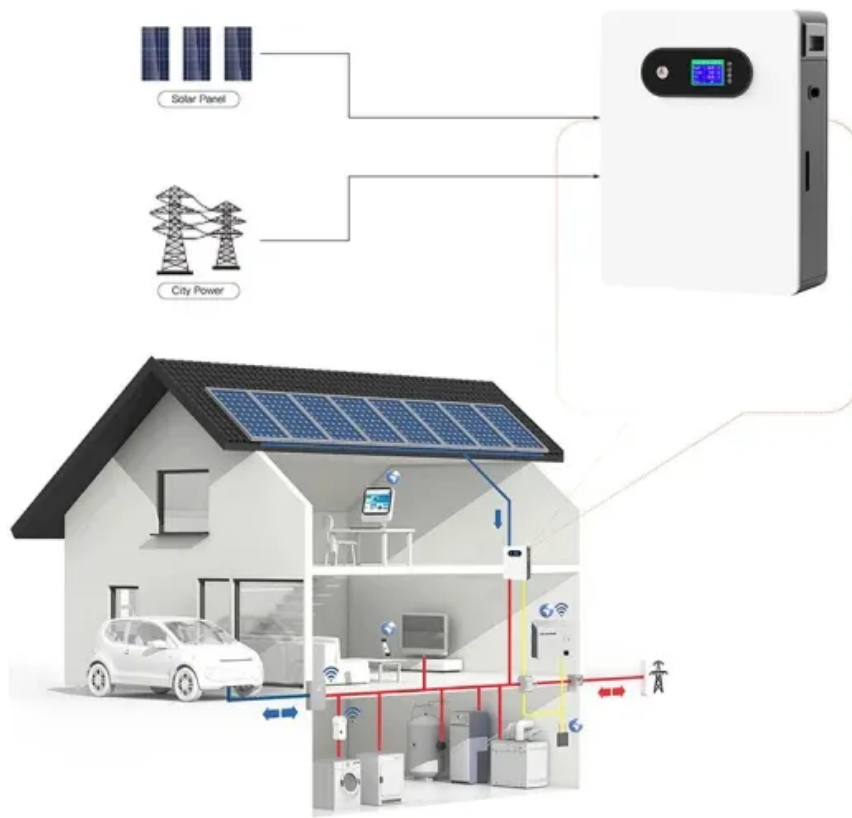


# How far are the planets from the earth





## Overview

---

The distance from Earth to each planet in our solar system varies significantly. For example, the average distance from Earth to Venus is about 41 million kilometers (25 million miles), while the average distance to Mars is approximately 78 million kilometers (48 million miles). How far away are planets from each other?

Sometimes the distances will be closer and other times they will be farther away. The reason for this is that the planets have elliptical orbits and none of them are perfect circles. As an example, the distance between the planet Mercury and Earth can range from 77 million km at the closest point, to as far as 222 million km at the farthest.

How do we calculate the distance between planets?

For this reason, to calculate the distance, we use the average to measure how far planets are from one another. The Astronomical units (AU) column is the average distance between Earth and the Sun and is the most common way for scientists to measure distance in our Solar System.

How do planets' distance from the Sun vary?

The planets' distance from the Sun varies because all the planets orbit the Sun on different elliptical paths. The top row of planets shows the distance in kilometers or miles. The second row of planets dotted on a line illustrates their relative distance from the Sun and each other.

How far is each planet from the Sun?

How far each planet is from the sun is a more complicated question than it appears. Each planet is in an elliptical orbit around the sun. This means that the orbits of the planets are oval-shaped, and so at different intervals, the planets will be closer or further from the sun. It can be hard to fully grasp the scale of the solar system.

Why does the distance between the 8 planets vary?



The distance among each of the eight planets in our Solar System will alter depending on where each planet is in its orbit revolution around the Sun. Depending on the time of year the distance can also differ significantly. The main reason for the planets to vary their distance is due to elliptical orbits.

What is the distance between Earth and Venus?

Earth is the third planet from the Sun, orbiting at an average distance of 93 million miles (149.7 million kilometers). Venus is the sixth largest planet in the solar system. Venus is about the same width as Earth, and has an equatorial diameter of about 7,521 miles (12,104 kilometers).



## How far are the planets from the earth



### [How Far Is Each Planet From Earth In Miles](#)

1. Review planet order and relative sizes in our solar system. Display the NASA illustration: All Planet Sizes. Ask students to point out the location of Earth. Then challenge them to identify all of the planets, outward from the sun (left to right): inner planets

### What are the distances of all planets from the Sun in scientific

We already know that the distance of all the planets are generally calculated by keeping the Sun as the main location point. The distances of all the planets from the Sun in scientific notation and exponential form- Mercury- 57 million kilometers. Scientific notation-  $5.7 \times 10^7$  "km" Venus- 108 million kilometers. Scientific notation-  $1.08 \times 10^8$  "km" Earth- 150 ...



### How Far is the Sun From Earth? , Distance, KM, Time Takes

How far is the Sun from Earth? Well, when it comes to space, we apply different measurements, and in terms of distance. Click for more. Everything in the Universe is moving, from a couple of kilometers/miles per second to more than 200 km / 124 mi per second, with space itself theorized to expand faster than even the speed of light, which is 299,792 km / ...

### Distance From Earth

The distance from Earth to a planet can vary greatly depending on several factors, including



the planet's position in its orbit around the Sun and Earth's position in its own orbit. Since the planets and Earth all orbit the Sun, their ...



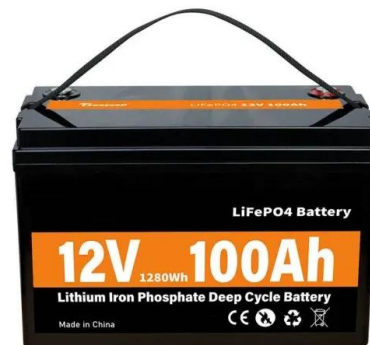
### Order of the Planets by the Distance From the Sun

The planet Earth is 93 million miles away from the sun, and with a diameter of 7,926 miles, it is the fifth largest planet in the solar system. As far as we know, it is the only planet with life, and about 70 percent of its surface is covered in water.



### Facts About Earth

Earth is the third planet from the Sun, and the fifth largest planet. It's the only place we know of inhabited by living things. As far as we know, such a magnetic reversal doesn't cause any harm to life on Earth, and a reversal is ...



### How do Astronomers Know Where Planets Are?

How do astronomers work out how far planets are from Earth, and what sort of accuracy do they achieve? Answer Dominic - We know the laws of gravity that the planets are orbiting under and we can see how long it takes those planets to orbit around the Sun.





### Planets In Order: By Size And Distance From The Sun

The planets in order from the sun are Mercury, Venus, Earth, Mars, Jupiter, Saturn, Uranus, Neptune and finally the dwarf planet Pluto. Most people have at least heard about our solar system and the planets in it. Our solar system is usually gone over in elementary school, so you might just need a refresher course about



### Distances of the Planets From the Sun in Light Years

Planets are far closer to Earth than distant galaxies, so seeing a planet through a telescope or in a photo is not such a distant view into the past. In fact, it's common to measure planet distances from the sun in light minutes or light hours as opposed to light years, since those numbers are smaller and easier to comprehend.



### Earth facts: Size, distance from the Sun, orbit

Size: Earth has a diameter of 7,926 miles (12,756 kilometers). Distance from the Sun: Earth is the third planet from the Sun, which is about 93 million miles (150 million km) away. Orbit around the



### Solar System Facts

Our solar system includes the Sun, eight planets, five officially named dwarf planets, and hundreds of moons, and thousands of asteroids and comets. Our solar system is located in the Milky Way, a barred spiral galaxy with two major ...



### How Far Is the Sun From Earth?

All of the planets, comets, and asteroids in the solar system orbit the Sun. The average distance between the Earth and the Sun is 92,955,807 miles (149,597,870 km). Most people just round it up to 93 million miles. This distance is called an astronomical unit or AU and is used to measure and compare other [...]



### How far are the planets from the Sun?

all the planets and their distance to the Sun, as well as how close these planets get to Earth. Mercury Closest: 46 million km How far are the planets from the Sun? (2014, April 22) retrieved



### **Student Video: Solar System Size and Distance , NASA/JPL Edu**

How big are the planets and how far away are they compared to each other? See how the sizes of planets and the distances between them compare. And find out why it's so hard to create a scale model of the solar system that accurately represents both size and ...



### Order Of the Planets From The Sun

First the quick facts: Our Solar System has eight "official" planets which orbit the Sun. Here are the planets listed in order of their distance from the Sun: Mercury, Venus, Earth, Mars



### Mercury Facts

Introduction Mercury's surface temperatures are both extremely hot and cold. Because the planet is so close to the Sun, day temperatures can reach highs of 800°F (430°C). Without an atmosphere to retain that heat at night, temperatures can dip as low as -290°F (-180°C). Despite its proximity to the Sun, Mercury is not the hottest [...]

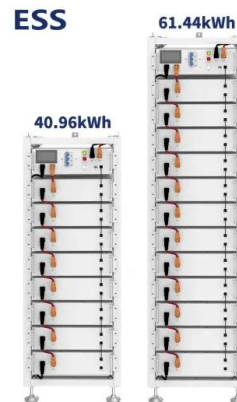


### Cosmic Distances - NASA Solar System Exploration

One AU is the distance from the Sun to Earth's orbit, which is about 93 million miles (150 million kilometers). When measured in astronomical units, the 886,000,000-mile ...

### Distance, Brightness, and Size of Planets

Earth is the third planet from the sun at an average distance of one AU. Scientists base Astronomical Units off the Earth, so one AU is equal to 93-million miles. Also ...



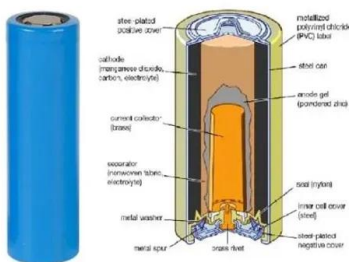
### How far is Pluto from Earth?

The average distance from the Earth to Pluto is about 3.67 billion miles (5.9 billion kilometers). To put that in perspective, consider this: if you were to drive your car to Pluto at a steady 60 miles per hour (97 kilometers per hour), it would take you about 67,000 years



### How Long Would It Take To Travel To Each Planet?

Our solar system is home to eight individual planets. Moving outwards from the sun, they are Mercury, Venus, Earth, Mars, Jupiter, Saturn, Uranus, and Neptune. Some of these worlds are far closer than others, and the time it would take to travel to each planet



### How Far Are The Planets From The Sun?

The table below (first created by Universe Today founder Fraser Cain in 2008) shows all the planets and their distance to the Sun, as well as how close these planets get to Earth. Mercury: Closest

### How Far is Earth From the Sun? , Space Questions

How Far Away Is the Sun From Earth? The planet Earth orbits the sun in roughly 365 days but this is not in a perfectly circular orbit. As such we are slightly differing distances from this massive star throughout the year. On average we are 93 million miles (150



### The Planets in Order of Distance, Size, Mass & More

Venus is often called Earth's twin because it's about the same size and mass as our planet. But that's about where the similarities end! Venus has a thick, toxic atmosphere that's mostly made up of carbon dioxide, with ...



### What Planets are Visible from Earth?

Five planets can be seen from Earth without help from telescopes. Most of these can be seen all throughout the year although usually, not all of them at the same time as their orbits can sometimes take them behind the Sun, blocking the visibility, or too far



### **Solar System**

Diagram of the early Solar System's protoplanetary disk, out of which Earth and other Solar System bodies formed The Solar System formed at least 4.568 billion years ago from the gravitational collapse of a region within a large molecular cloud.[b] This initial cloud was likely several light-years across and probably birthed several stars. [14]

### **How Far Is The Moon?**

While other planets have many natural satellites, the Earth only has one--the Moon. On average, the Moon is 384,400 kilometers or 238,855 miles from Earth. With this distance, we can say that the Moon is about 30 Earths away from us.



### **Encyclopedia**

The table below provides the distances from the planets to the Earth sorted by minimal distances. In order to sort by maximal distance, click on the title of the columns. Concerning the asteroids and comets, see the pages dedicated to the close approaches to the Earth by these bodies.





### In Depth , Earth's Moon - NASA Solar System Exploration

If Earth were the size of a nickel, the Moon would be about as big as a coffee bean. The Moon is an average of 238,855 miles (384,400 kilometers) away. That means 30 Earth-sized planets could fit in between Earth and the Moon. The Moon is slowly moving

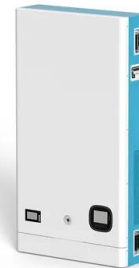


### What is the distance of all planets from earth?

How far is earth from mars in au? This distance is continuously varying as the two planets orbit the Sun. The minimum distance is about 0.5 au. That's because the (average) distance of Earth from

### The Planets In Order , From The Sun, Information, History

Earth is the biggest terrestrial planet having a diameter of 12.760 km / 7.926 mi. Surface temperatures on Earth are around 14 degrees Celsius. Around 70% of Earth's surface is covered in water, while the atmosphere is made out of ...



### Distance Between Planets Of The Solar System , KM & Current ...

The Astronomical units (AU) column is the average distance between Earth and the Sun and is the most common way for scientists to measure distance in our Solar System. Below is a table of the distances between each of the planets in our solar system.



## Contact Us

---

For catalog requests, pricing, or partnerships, please visit:  
<https://vdbconstruction.co.za>