

How high should the photovoltaic panels be installed from the floor





Overview

What is the optimal tilt angle of photovoltaic solar panels?

The optimal tilt angle of photovoltaic solar panels is that the surface of the solar panel faces the Sun perpendicularly. However, the angle of incidence of solar radiation varies during the day and during different times of the year.

How high should solar panels be on a flat roof?

On a flat roof, the highest part of the solar PV equipment should not be more than 600mm higher than the highest part of the roof (excluding chimney). In some cases, however, permitted development rights are more limited.

What angle should solar panels be placed?

The good news is that for most areas, positioning your solar panels within 30 to 45 degrees of your latitude will still provide good year-round energy production. So, while the optimal angle varies based on location and goals, solar panels can work effectively for homes and businesses at a wide range of angles.

How much space do you need to install solar panels?

For an average 3-bedroom house, 20-35 sq metres of space is required for ground mounted solar panels. This estimate differs according to the size of the solar installation. Therefore, you will need to be aware of the planning permissions required to install them.

What angle should solar panels be installed in London?

For instance, the latitude of London is 51.5 degrees, but the optimum angle for solar panels in this city is 36 degrees. However, in the case of most rooftop solar panel installations, the angle of the solar panels is determined by the angle of the roof - there isn't much you can do to change it.

Should solar panels be installed in landscape orientation?



Installing solar panels in landscape orientation is often the default choice for solar designers. The simplicity of design and installation, coupled with the widespread use of landscape-mounted panels in commercial installations, makes it a go-to solution for many solar projects. However, simplicity does not always equate to optimal performance.



How high should the photovoltaic panels be installed from the floor



A Step-By-Step Guide To Rooftop Solar Panel Installation

This step-by-step guide will provide you with all of the information necessary to successfully install a rooftop solar panel system. It will cover everything from planning and ...

How to Install Solar Panels DIY: A Simple Step-by-Step Guide

A successful solar panel installation starts with meticulous planning. This involves assessing your energy needs, ensuring your roof is suitable, and obtaining necessary ...

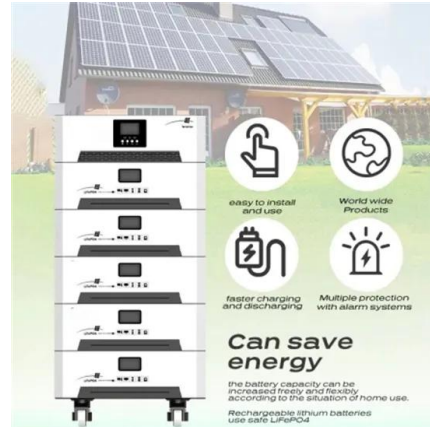


Photovoltaic pavement and solar road: A review and perspectives

As a type of inexhaustible and infinite energy source [19], solar energy plays a vital role in the energy system around the world. At the same time, since most roadways are ...

Solar panel inclination angle, location and orientation

On a pitched roof, panels should not be installed above the highest part of the roof (excluding the chimney) and should project no more than 200mm from the roof slope or wall surface. On a flat roof, the highest part of ...

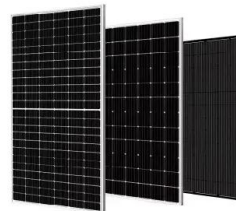


Solar PV fixings and wind loading

whether the solar PV panels are going to be: o retrofitted onto an existing roof o roof integrated - used instead of tiles or other roofing materials o installed on a flat roof o ground mounted. ...

What's the Best Angle for Solar Panels? , EnergySage

The bigger blockers tend to be shading, roof size, local electricity prices, and local solar power policies. Below, we'll get into the finer details of the ideal direction and angle for solar panels, how it varies ...



How to Install Solar Panels (Detailed Step-By-Step ...

How to install solar panels wiring . Solar panel wiring installation is not overly complicated if you understand basic electricity procedures. First, there is a positive wire and a grounding wire. Most solar components have a ...



Floor

PV modules require the use of silicone sealant high quality for bonding and sealing of junction boxes of photovoltaic modules. Silicone has excellent adhesion to most substrates used in the manufacture of photovoltaic modules and does ...



[Solar Panel Costs in the UK: 2024 Prices](#)

A 4kW solar panel system is suitable for the average home in the UK and costs around £5,000 - £6,000.; The estimated average yearly savings you can expect with a solar panel system ...

A Full Guide to Solar Panel Placement and Installation

The direction of the solar panel should be facing the equator (due south in the Northern Hemisphere and due north in the Southern Hemisphere). making them less visible. They're also more aerodynamic, ...



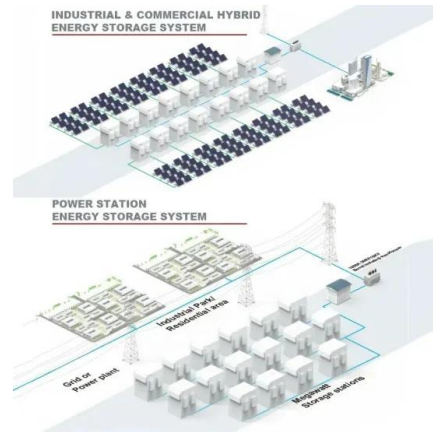
How are solar panels installed? , 11 steps explained

Most ground-mounted solar panel projects also require planning permission. Get in touch with your local authority if your planned installation is: Composed of more than one solar panel; Within five metres of ...



PV Floor , Walkable Solar Module, Solar Panel Floor Tiles

Discover our innovative PV Floor solutions, featuring Walkable Solar Modules and Solar Panel Floor Tiles. Our Photovoltaic Floors seamlessly integrate solar energy generation into your ...



Ground Mounted Solar Panels: November 2024 Guide

Ground-mounted solar panels are installed on the ground, typically in open spaces, and offer greater flexibility in orientation and tilt, which can maximise energy production. An average 3-bedroom house requires ...

How a solar panel system is installed , What to expect on the day

For small or medium-sized solar panel systems, installation will normally take no more than 1 day. A small system is 2-8 panels. A medium-sized system is 9-20 panels. Ideally, the inverter ...



Ground Mounted Solar Panels: November 2024 Guide

Ground mounted solar panels are 20%-25% more efficient than rooftop solar panels, as they can be positioned in the ideal direction and angle to maximise energy production and they have a lower degradation rate.; ...



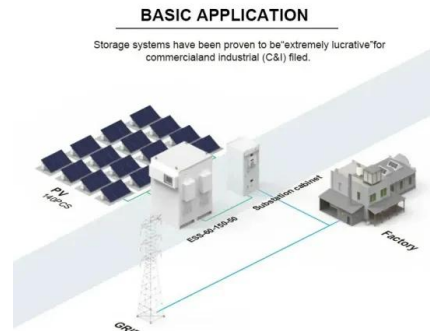
What's the Best Angle for Solar Panels? , EnergySage

South-facing panels give you the most bang for your buck because the sun crosses the sky in the south, giving the panels more sunlight. "We tell people that a solar panel ...



Best Practices for Installing Bifacial Solar Panels , Explained

Bifacial solar panels represent a significant advancement in photovoltaic technology, offering the potential to capture sunlight from both their front and rear surfaces. ...



Solar Panel Orientation: Landscape vs Portrait , Fenice ...

Solar-paneling construction and installation services often face a medley of issues, including which way to orient the panels - whether vertical (portrait) or horizontal (landscape). This blog is going to break down how the ...



A guide for where to place your solar panels , Geo ...

The good news is that for most areas, positioning your solar panels within 30 to 45 degrees of your latitude will still provide good year-round energy production. So, while the optimal angle varies based on location and ...



Solar Panels for UK Houses

3 ???· Solar photovoltaic (PV) panels convert sunlight into electricity for your home. Read our complete guide now. Solar Panels for UK Houses - Updated November 2024 Guide



How to install ground-mounted solar panels (The 5-step process)

Calculate the total surface of your solar panel array. Add 20% extra space to allow movement around your structure. For example, a 400W solar panel covers an area of ...

Ground-mounted solar panels: what you need to ...

Here's what to consider if you're thinking about going solar with a ground-mounted solar panel installation. Here are the top five companies that provide ground-mounted solar panels. Qcells: With high-quality solar panels and U.S. ...



Is my roof suitable for solar panels? [UK checklist]

? Solar panel installation is much easier if you have a useable loft space It's much easier to get rooftop solar panels installed if you have a loft space. This way, installers can ...



How Much Do Solar Panels Cost? (Nov 2024)

Average solar panel cost in 2024. The average 5-kilowatt (kW) solar panel system is \$14,210 before considering any financial incentives. However, a typical American household needs a system closer



How Much Do Solar Panels Cost?

High (5,000kWh) Electricity use based on Ofgem typical domestic use values, taking a mid-point between profile class 1 (single-rate meter) and 2 (multi-rate meter) at the time of calculation.

Complete Solar Panel Installation Guide

Final Thoughts About Solar Panel Installation. Solar panels are a significant investment that can lead to substantial long-term benefits for homeowners. While some homeowners can handle DIY solar power ...



Solar Panel Install

Elevation - the optimal elevation for a photovoltaic installation is 40° from horizontal. This has been calculated to give you the maximum exposure during all seasons i.e. the low sun in ...



Correct Installation of Photovoltaic (PV) System

PV system installed on ground floor beside village house is not accepted as green and amenity facility for village houses. PV system installed on roof should not exceed ...



How are solar panels installed? Our guide to solar panel roof

In recent years, solar panels have become more popular than ever before, with the UK seeing more than 17,000 new solar installations each month so far in 2023. This isn't surprising, given ...

A guide for where to place your solar panels , Geo Green Power

Whether you are having a domestic or a commercial solar panel installation, it is important to understand the factors involved in finding the ideal location for your panels to get ...



Contact Us

For catalog requests, pricing, or partnerships, please visit:
<https://vdbconstruction.co.za>