

How long is the longest blade of a generator





Overview

Forty years ago, wind turbine blades were only 26 feet long and made of fiberglass and resin . Today, blades can be 351 feet, longer than the height of.

Longer blades create more efficient turbines; however, they also put more mechanical stress on the structure, so it requires lighter materials.

The limit to the maximum size of a wind turbine blade involves the point of inflection, when the blades begin to bend and flex. Longer blades are more flexible which also creates more vibration, affecting the overall.

Today, blades can be 351 feet, longer than the height of the Statue of Liberty, and produce 15,000 kW of power. How many blades does a wind turbine have?

Most turbines have three blades which are made mostly of fiberglass. Turbine blades vary in size, but a typical modern land-based wind turbine has blades of over 170 feet (52 meters). The largest turbine is GE's Haliade-X offshore wind turbine, with blades 351 feet long (107 meters) - about the same length as a football field.

Who makes the longest wind turbine blades?

The company produced its first wind turbine blades in the 1970s, measuring less than 10 meters long at the time. Fast-forward 40 years, the Lunderskov Pilot Plant continues to manufacture the longest and most advanced blades in the world, and LM Wind Power is the world's leading independent blade supplier, with factories in all major wind markets.

How long do wind turbine blades last?

So, how long do wind turbine blades last really depends on these factors. The main reasons for wind turbine blades to be replaced after approximately ten years are higher levels of loading and fatigue, damage from bird or lightning strikes and high winds loads. Their performance largely diminishes by about 1.6% per year.

How big is a GE wind turbine?



The GE 4.8-158 is one of the world's largest onshore wind turbines. Each unit is powerful enough to provide electricity for 5,000 European homes. What is The Diameter of Wind Turbine Blades?

At the time of writing the average wind turbine blade diameter is about 125 meters (410 feet).

How long is a wind turbine rotor?

Wind turbine blade length or wind turbine blades size usually ranges from 18 to 107 meters (59 to 351 feet) long. Depending upon the use of the electricity produced. A large, utility-scale turbine may have blades over 165 feet (50 meters) long, thus the diameter of the rotor is over 325 feet (100 meters).

What is the largest wind turbine in the world?

The largest wind turbine at the time of writing is the GE's Haliade-X offshore wind turbine, has blades up to 351 feet (107 meters) long! Its production site is in Saint-Nazaire, France. The GE 4.8-158 is one of the world's largest onshore wind turbines. Each unit is powerful enough to provide electricity for 5,000 European homes.



How long is the longest blade of a generator



[How Long Can a Portable Generator Run ...](#)

How Long Can a Portable Generator Run Continuously? Most popular gas or propane-powered portable generators will run from 8 to 12 hours at a 25% load. If you get a bigger-sized generator it can run for up to 16 hours ...

Max length for 50 amp generator cord? : r/askanelectrician

Say I have a generator with 12,000 running watts, and a 50amp receptacle, what is a safest long cord I could use? My inlet box is far away from where I want the generator to actually be. Is a ...



The world's longest onshore wind turbine blade makes its debut

The world's longest onshore wind turbine blade will be attached to the company's 15-megawatt (MW) wind turbine unit, which debuted at the China Wind Power 2023 exhibition ...

What Is the Average Length of a Wind Turbine Blade?

The evolution of wind turbine blade length has seen a remarkable increase in rural America, with the average blade size exceeding 170 meters. Longer blades play a pivotal ...



Bosch Precision Extra Long 10 Inch Jigsaw Blades Review

These extra long Bosch blades run about \$21 per three pack and are available in both wood and wood/metal blade styles. Buy Now - 6 TPI for wood via Amazon. Buy Now - ...

Wind Turbine Blade Technology: Designing for Efficiency

Wind turbine blades are the primary components responsible for capturing wind energy and converting it into mechanical power, which is then transformed into electrical energy through a ...



Massive 430-foot, 'longest on land' wind turbine ...

Sany Renewable Energy, a China-based manufacturer of wind turbines, has rolled out the SY1310A turbine blades measuring 430 feet (131 m) long turbine blades from its Bayannur Intelligent





How Long are Wind Turbine Blades: The Quick Guide ...

Blade Specifications: Length: 354 feet, rivalling the wingspan of a Boeing 747; Generation Capacity: Capable of lighting up thousands of European homes; Material Advancements: Utilizing cutting-edge materials like ...



World's longest wind turbine blade successfully ...

The world's longest wind turbine blade, at 88.4 meters, has successfully completed its first journey - perhaps as the largest cargo ever transported on danish roads.

How Long Do Wind Turbines Last? Average Lifespan ...

Wind turbine blades failing are still rare with about 0.54% (or 3,800) of all blades in the United States failing every year [10]. The top three types of wind turbine failure are due to the blades, generator, and gearbox. ...



How Long Does A Generator Last? (2024 Run Time ...

What fuel type can dictate how long your generator is able to run continuously due to the capacity of the fuel tank. Below we will discuss each fuel type. The size load you have on your generator will also affect the length ...



AI Photo Generator (realistic, free, no sign-up, no limits)

Realistic AI Image Generator. Free. No sign-up. No limits. No watermark. Generates photorealistic photos from text. Can do everything from casual selfie style to celebrity photoshoot style, with ...



Wind Turbine Blades; What You Really Need To Know

Wind turbine blade length or wind turbine blades size usually ranges from 18 to 107 meters (59 to 351 feet) long. Depending upon the use of the electricity produced. A large, utility-scale turbine ...

How Long Can A Generac Generator Run Nonstop?

How long your Generac generator runs non-stop also depends on your home's wattage requirements. So far, we have assumed average consumption of 900 kW/h per month ...



at 115 meters, this is siemens gamesa's longest wind ...

Siemens Gamesa, the Spanish-German renewable energy giant, has started production of its first B115 wind turbine blades in Aalborg, Denmark. Measuring 115 meters long, the blades will be used



How Long Can a 30-Amp Generator Extension Cord Be?

In this comprehensive FAQ-style guide, we'll answer all your questions about how long a 30-amp generator extension cord can be. So sit back, relax, and let's dive right in! ...



What is The Longest Running Portable Generator

From the ones, we have given you the answer is very obvious. It's the Westinghouse WH7500E with a running time of 12 hours at half the capacity, its unrivaled by the other three we have ...

How Blade Length Affects Wind Turbine Performance

2. Why do longer blades increase costs? Longer blades require more materials and are more expensive to manufacture and transport. Additionally, they can require more ...



How Long Do Home Generators Last? , Learn the Lifespan

Now that we've looked at all the factors that affect how long your home generator lasts, it's the moment you've been waiting for. How long do home generators last on ...



How a Wind Turbine Works

Turbine blades vary in size, but a typical modern land-based wind turbine has blades of over 170 feet (52 meters). The largest turbine is GE's Haliade-X offshore wind turbine, with blades 351 feet long (107 meters) - about the ...



Efficient Higher Revenue

- Max. Efficiency 97.5%
- Max. PV Input Voltage 600V
- 50% Peak Output Power
- 2MPP Trackers, 150% DC Input Overvoltage
- Max. PV Input Current 15A, Compatible with High Power Modules

Intelligent Simple O&M

- IP66 Protection Degree: support outdoor installation
- Smart I-V Curve Diagnosis Function: locate PV string faults accurately and automatically detect faults
- DC & AC Type II SPD: prevent lightning damage
- Battery Reverse Connection Protection

Flexible Abundant Configuration

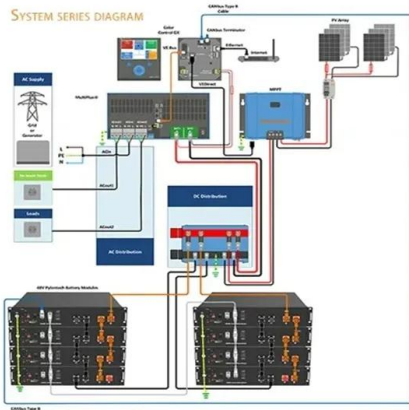
- Plug & Play, UPS Switching Under 10ms
- Compatible with Lead Acid and Lithium Batteries
- Max. 6 units Inverters Parallel
- AFCI Function (Optional): when an arc fault is detected the inverter immediately stops operation

[How Long Can a Generator Cord Be? - Crankfix](#)

To better illustrate how long a generator cord should be, I'll give you a couple of hypothetical examples based on the type of generator you have. Ideal Length of a Stationary Generator Cord. Let's say your shed is 50 feet (15 ...

How Long Does a Solar Generator Last? (With Examples)

How long does a solar generator last? A solar generator with a cycle life of 500 cycles lasts about 1.37 years after using one battery lifecycle per day. In the same format, one with a cycle life of 2,000 cycles lasts about 5.48 ...



[The World's Longest Wind Turbine Blade - FTW](#)

The new blade has also broken the record of GE's LM 107 meter long blade and has been officially upgraded to the world's longest wind turbine blade. In addition, in June 2020, Aerodyn ...



What Is The Longest Hedge Trimmer Blade And How To Choose ...

Discover the benefits of longest hedge trimmer blades in our comprehensive guide. Learn how blade length impacts efficiency, allowing you to tackle high hedges and overgrown bushes with ...



[How Long Are Wind Turbine Blades?](#)

The world's longest wind turbine blade rolls off the production line for the first time. This turbine has the potential to generate 67 GWh of renewable electricity each year which is enough to power over 16,000 homes.

[How Long Does a Solar-Powered Generator Run?](#)

How long will a solar generator run? The runtime of a solar generator depends on several factors, including its capacity, solar panel efficiency, battery capacity, and power consumption of connected devices. Small portable generators can run ...



How a Wind Turbine Works

Turbine blades vary in size, but a typical modern land-based wind turbine has blades of over 170 feet (52 meters). The largest turbine is GE's Haliade-X offshore wind turbine, with blades 351 ...



Massive 430-foot, 'longest on land' wind turbine blades unveiled ...

It makes them the longest blades on land. The 430-foot-long blade will now enter a long testing phase before being deployed on the 15 MW wind turbines SANY plans to ...



How Long Are Wind Turbine Blades? The Surprising Answer!

Wind turbine blades usually measure about 210 feet long, but some of the biggest ones can stretch up to 351 feet! For example, the GE Haliade-X turbine boasts the ...

Engineering Feat: World's Longest Onshore Wind Turbine Blades

China's wind turbine manufacturing giant, SANY Renewable Energy, has recently developed the world's largest onshore wind turbine blades. At a length of 430 feet, the ...



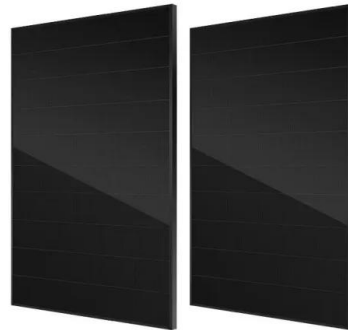
[How Long Is a Wind Turbine Propeller?](#)

If you've ever wondered about the size of a wind turbine propeller, they can range from 20 to 370 feet in length, depending on the turbine's size and capacity. Turbines ...



World's longest wind turbine blade successfully completes its ...

The company produced its first wind turbine blades in the 1970s, measuring less than 10 meters long at the time. Fast-forward 40 years, the Lunderskov Pilot Plant continues to manufacture ...



How Long Do Generators Last? (Running Hours, Not Lifespan)

As we can see, diesel generators run for up to about 15 hours on 100% load and up to about 60 hours on 25% load. The smaller diesel generators like 500W generators can last up to 322.11 ...

Contact Us

For catalog requests, pricing, or partnerships, please visit:
<https://vdbconstruction.co.za>