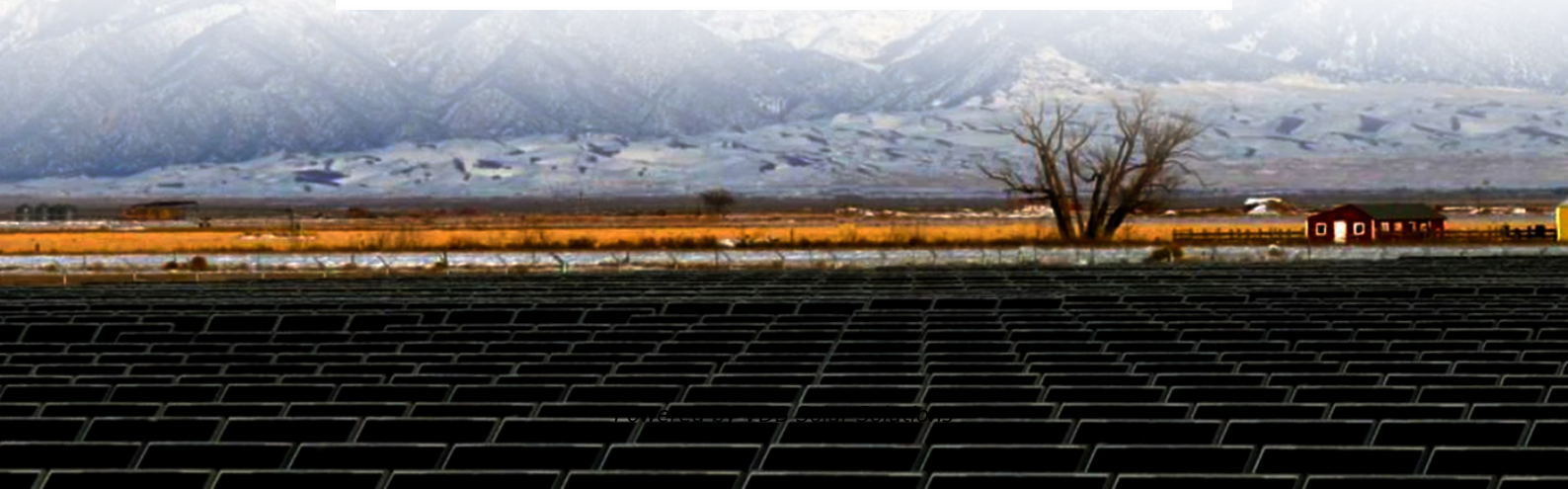


# **How many cubic meters are the double-glass photovoltaic panels**





## Overview

---

How much does a double glass solar panel cost?

Due to the fact that double glass modules use glass on both sides, their costs are often higher than those of glass-foil modules. When glass is used on both sides of solar panels, the average cost of PV glass per square meter, which is \$6, doubles.

What are double glass solar panels used for?

Double glass solar panels can be used in a variety of settings, including commercial solar farms, residential rooftops, and cutting-edge architectural projects. They are an excellent option for many solar energy projects because of their strength, efficiency, and design flexibility.

What are Coulee double-glass solar panels?

Coulee double-glass solar panels can be designed and produced in various dimensions with different numbers of cells (36, 48, 60, 72 cells, etc.). Allows adjusting the light transmission and shading level inside the building by regulating the solar cells' distance during the production process.

Why do solar panels have two sheets of glass?

The combined strength of using two sheets of glass makes the solar panel less prone to becoming deformed or for microcracks to form in the cells. Installing dual-glass panels on a reflective surface, like a white rooftop, can increase solar energy production.

What are the disadvantages of double glass solar panels?

Despite all of its benefits, double glass solar panels have some disadvantages, such as: **Greater Weight:** Due to their larger weight compared to standard modules with a foil back, double glass solar panels can be more difficult to install. But over time, improvements have been made to make them lighter.



How long do double glass solar panels last?

**Improved Durability:** Double glass solar panels, which have glass on both sides, offer excellent protection and have a long service life, frequently lasting 30 years or more. They provide enhanced moisture resistance and enhanced fire safety.



## How many cubic meters are the double-glass photovoltaic panels



### What is the Double Glass(Dual Glass) Photovoltaic Solar Panel?

Glass-glass module structures (Dual Glass or Double Glass) is a technology that uses a glass layer on the back of the modules instead of the traditional polymer backsheet. ...

### Solar Panel Wiring Basics: Complete Guide & Tips to Wire a PV ...

You should know that there are limitations for series solar panel wiring. In the U.S., solar strings are required to feature a maximum voltage of 600V, so solar arrays comply ...



Deye inverters and Deye batteries are more compatible.

### An overview of solar photovoltaic panels' end-of-life material

Each sample was obtained by cutting a piece of about 10 × 10 cm by using a diamond blade for glass cutting, followed by panel cutting. The gas supply flow rates for the ...



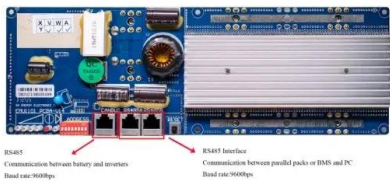
### [Solar Panel Output Calculator UK 2024](#)

If you're planning to cut your energy bills and help the climate by getting solar panels on your roof, you'll want to know exactly how much electricity they can produce and ...



### Types of Solar Panels: On the Market and in the Lab [2023]

What is a solar panel system? A solar panel system is an inter-connected assembly, (often called an array), of photovoltaic (PV) solar cells that (1) capture energy emanating from the sun in ...



### Solar Rooftop Calculator: How Many Solar Panels Can Fit On ...

Now, by average solar panel wattage per square foot, we can put a 10.35kW solar system on an 800 sq ft roof. This is how many solar panels you can put on this roof: If you only use 100-watt ...



### A Comprehensive Guide to Bifacial Solar Panels

Bifacial solar panels are double-sided panels that use both the top and bottom sides to capture and transform the solar energy. They've been around since they were first ...





### Solar Panel Glass Specifications Explained

PV glass is available in various sizes to suit different applications: Standard sizes: Many manufacturers offer standard sizes for ease of production and installation. Custom ...

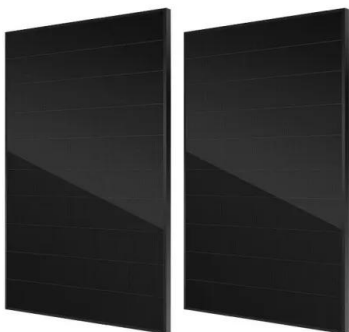


### Windows with Solar Panels Built-In

This new form of solar panel has provided us with a new and exciting form of solar energy that is generated through glass that is practically clear. At the moment, a lot of ...

### **Exploring double glass solar panels: A Technological Br**

Discover the technological structure, working principles, cost-effectiveness, advantages, and applications of double glass solar panels, a promising innovation in the solar energy.



### What are Double Glass Solar Panels?

Should you go for double glass vs single glass solar panel? Fear not, sun-seeker! This guide will illuminate the key differences and help you pick the perfect panel for your needs.



### Standard Solar Panel Sizes And Wattages (100W-500W Dimensions)

A typical 400-watt solar panel is 79.1 inches long and 39.1 inches wide. It takes up 21.53 sq ft of area. If you have a 1000 sq ft roof, and you can use 75% of that roof area for solar panels, you ...



### Solar Panel Cost Calculator in the Philippines

FAQ: Calculate the number of solar panels for your needs How many solar panel for 3kw. It takes around 7 to 8 solar panels to produce 3 kW. How many solar panel for 6kw. To generate 6 kW, you need around 14 to 16 ...

### Krannich Solar Germany: Double glass solar panels

But what sets double glass solar panels apart from other types, and what are the advantages and disadvantages for electricians and solar professionals? In this blog post, we'll explore the world of double glass panels, ...



### Double Glass vs Single Glass Solar Panel: Which is ...

However, double glass panels hold the edge in durability, lasting longer and experiencing less performance degradation over time. Cost Comparison: Counting Solar Pennies. Budget plays a big role in any decision. ...



### Solar panel output: How much electricity do they produce?

Make sure your solar panels are installed in direct sunlight. If just a small amount of shade covers a solar panel, it can significantly reduce how much electricity it's able ...



### Transparent Solar Panels: Reforming Future Energy Supply

This clear solar panel could turn virtually any glass sheet or window into a PV cell. By 2020, the researchers in the U.S. and Europe have already achieved full transparency ...

### Why Dual-Glass is the best solar panel technology for ...

Trina Solar double-glass solar panels come with a high fire protection rating compared to backsheet modules. That makes them suitable for constructing roofs for residential homes, chemical plants, and other building ...



### How many solar panels do you need to power a UK home?

The best way of knowing exactly how much energy you use at home is to install a smart meter. According to the Renewable Energy Hub, domestic solar panel systems ...



### How many solar panels do I need? Our guide to sizing ...

When translating your energy needs into solar panel numbers, remember that a typical 350W solar panel produces around 265kWh per year in the UK. So if you use 2,650kWh of electricity annually, you can theoretically ...



### The Benefits and Drawbacks of Glass Solar Panels: A ...

Key Takeaways. Durability and Warranty: Full black glass glass solar panels come with a 38-year performance guarantee. High Performance: Double glass solar panels are crafted to work well even in tough conditions. ...

### Solar Panel Sizes & Dimensions UK (2024)

For example, instead of the typical 2-meter solar panel, they are around 0.5 metres. Although, please note that they will not generate as much power as standard-sized ...



### What Are Bifacial Solar Panels

The double-glass structure of bifacial solar panels can offer improved durability and longevity compared to traditional solar panels. The dual-layered glass provides added protection against environmental factors such ...



## Solar Panel Installation Philippines for 3kw, 5kw, 10kw

How much is solar panel installation cost for 3kw, 5kw, 2kw, 1kw, 10kw, for 500w solar panel price philippines Without a smart meter, the photovoltaic system must be ...



## A Complete Guide on Solar Panel Calculations (2023 ...

For instance, assuming a solar panel has a surface area of 1.6 square meters and the highest power output of 200W, then its efficiency would be:  $\text{Efficiency} = [(200 \div 1.6) \div 1000] \times 100\% = 12.5\%$  How many kWh does ...

## How Many Solar Panels Do I Need To Power a House?

Solar panel wattage x peak sun hours x number of panels = daily electricity use. Obviously, electricity use, peak sun hours, and panel wattage will be different for ...



## [Solar Panel Sizes, Dimensions & Weight](#)

The size of a solar panel will directly impact the number of solar cells that can fit onto the panel, which determines how much electricity can be generated from captured solar power. Dimensions of solar panels differ ...



## Contact Us

---

For catalog requests, pricing, or partnerships, please visit:  
<https://vdbconstruction.co.za>