



VDB Solar Solutions

How many meters does a photovoltaic panel have





Overview

As you can imagine, you can get almost any size solar panel you desire, from single tiles to ones that cover the entire roof. There are even companies that will craft custom and bespoke solar panels for your roof. However, if you have a particularly small roof there's no need to be too worried as you can still install solar.

The majority of solar panels for sale in the UK average around 350 watts (W) in power for residential units. However, it's quite easy to get your hands on more powerful solar panels.

If you have a small home or want to power mobile vehicles like caravans and campervans, the good news is that there are many smaller-sized.

Below we have detailed some of the most common solar panel installations in the UK for domestic properties. Please note that both the costs and final.

The size of a photovoltaic panel can vary, but most residential solar panels are approximately 1.7 meters tall by 1 meter wide¹²³. Commercial solar panels are larger, measuring about 2 meters by 1 meter⁴.

Most residential solar panels are 1.7m tall x 1.0m wide (or 1.7 m²), with a maximum power output of around 330W.

Residential solar panels are rectangular and measure approximately 2-meters tall by 1-meter wide. They are typically between 3 and 5cm deep, although all dimensions vary by brand.

In general, the length of residential solar panels is usually between 65 inches (1.65m) and 79 inches (2m), their width is between 39 and 41 inches (around 1m).

The average size of a commercial solar panel, such as those you would see on top of a hospital or in a field, is about 6.5 feet (2 meters) by 3.35 feet (1 meter), or 78 inches by 39 inches. What is the size of a solar panel?

The size of a solar panel is measured in watts, which indicates the amount of power it can generate. The most common solar panel sizes for residential



installations are between 250W and 400W, while larger commercial installations may use panels up to 500W or more.

How many solar panels do I Need?

The number and size of your solar panels depend on the size of your property and energy demands. A 4kW solar system is one of the most popular sizes for domestic solar systems, as it is typically appropriate for homes with 3 to 4 people. So in this case, you'd need something like 10 solar panels installed on your roof, each at a power of 400 kW.

Does solar panel size matter?

Solar panel size does matter: The more solar cells a panel has, the more energy it can absorb from the sun. However, solar panels can vary in terms of efficiency, so the key factor when choosing solar panels should be their power rating. Most residential panels range between 250 and 400 watts per hour.

How much power does a solar panel produce?

(The most powerful solar panel we recommend, the JA Solar JAM72S30 Mono PERC Half-Cell MBB, has a power output of between 525W and 550W.) Understanding solar panel wattage is vital to picking a solar panel powerful enough to meet your home's electricity needs.

What size solar panel do I Need?

The most common solar panel sizes for residential installations are between 250W and 400W, while larger commercial installations may use panels up to 500W or more. The size of a solar panel affects its efficiency, with larger panels generally being more efficient but also more expensive and heavier.

Is solar panel size the same as solar array size?

As such, solar panel size shouldn't be confused with solar array (or, if you prefer, solar system) size.



How many meters does a photovoltaic panel have



Ultimate Guide to Solar Panel Sizes, Dimensions

Typically, to understand solar panel size, the dimensions of a standard solar panel range from 65 inches by 39 inches. However, it's essential to note that there are variations in sizes based on the type of solar panel, such ...

Solar panel sizes and wattages , The Independent

Remember, one standard-sized 350W solar panel takes up 1.89m² of precious roof real estate, with more powerful panels hogging yet more - so it's a good idea to make ...



OEM service

Hot Colors:



Color can be customized
more questions just do not hesitate to contact us

LOGO Position: (Screen printing)



How To Read Your Solar Panel Meter: Mastering The Basics

By monitoring your solar production and usage, you can make adjustments to your energy usage and save money on your energy bills.. Types of Solar Panel Meters. There are two types of ...

[How much energy does a solar panel produce?](#)

How much energy does a solar panel produce? As mentioned above, the two main factors that determine solar panel energy output are panel power and sunshine. In the UK, a typical solar panel has a power rating of 350W (watts), ...



How Many kWh Does A Solar Panel Produce Per Day? Calculator ...

Now you can just read the solar panel daily kWh production off this chart. Here are some examples of individual solar panels: A 300-watt solar panel will produce anywhere from 0.90 to ...

How do solar cells work? Photovoltaic cells explained

A typical residential solar panel with 60 cells combined might produce anywhere from 220 to over 400 watts of power. Depending on factors like temperature, hours of sunlight, ...



How to Test Solar Panels: Output, Amps & Watts

2. Connect the power meter inline between the solar panel and charge controller. Throw a towel of the panel during this step. 3. Remove the towel and place your ...



How to Calculate Solar Panel kWh

Multiply the size of one solar panel in square meters by 1,000 to convert it to square centimeters. Example: If a solar panel is 1.6 square meters, the calculation would be $1.6 \times 1,000 = 1,600$ square centimeters. 2. ...

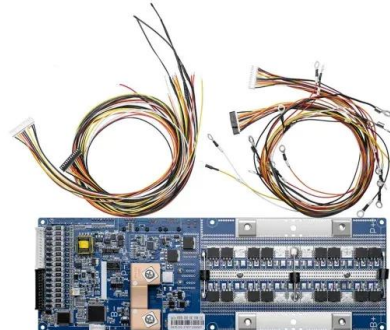


Solar Panel Output Voltage: How Many Volts Do PV ...

If you know the number of PV cells in a solar panel, you can, by using 0.58V per PV cell voltage, calculate the total solar panel output voltage for a 36-cell panel, for example. You only need to sum up all the voltages of the individual ...

Solar Rooftop Calculator: How Many Solar Panels Can Fit On ...

Number Of Solar Panel By Roof Size Chart. We have calculated how many of either 100-watt, 300-watt, or 400-watt solar panels you can put on roofs ranging from very little 300 sq ft roof to ...



Understanding your solar PV system and maximising the benefits

3 Description of your Solar PV system Figure 1 - Diagram showing typical components of a solar PV system The main components of a solar photovoltaic (PV) system are: Solar PV panels - ...



How Many Solar Panels Do I Need to Power My House?

How Many Solar Panels Do I Need for a 3-Bedroom House? It's difficult to determine how many photovoltaic panels you need based on the number of bedrooms. It ...

Home Energy Storage (Stackable system)



High Efficiency

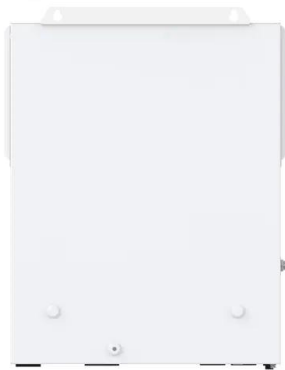
Easy installation

Safe and Reliable

Perfect Compatibility

Product Introduction

- Scalable from 10 kWh to 50 kWh
- Self-Consumption Optimizer
- Integrated with inverter to avoid the compatibility problem
- LFP battery, safest and long cycle life
- Stackable design for easy installation
- Capable of High-Powered Emergency-Backup and Off-Grid Function

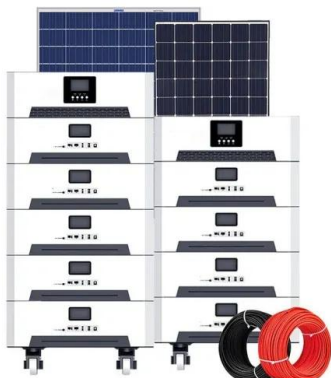


How many solar panels do you need to power a UK ...

Most home panels can each produce between 250 and 400 Watts per hour. According to the Renewable Energy Hub, domestic solar panel systems usually range in size from around to 1 kW to 5 kW. Allowing for some ...

Guide to Solar Panel Sizes & Dimensions (November ...

Solar cell dimensions are typically around 189 x 100 x 3.99cm (6.2 x 3.28 x 0.13 feet), while solar panel dimensions are usually between 1.6m² to 2m² (17.22 to 21.53 square feet). The physical size of the solar panel is ...



Solar Panels Sizes and Weights (All Sizes)

Roofs can only withstand so much weight, and it is crucial to know how much your solar panel of choice will weigh. Plus, there are specific wattages for different uses.



How much electricity do solar panels produce? [UK, 2024]

The average temperature coefficient for a solar panel is $-0.32\%/^{\circ}\text{C}$, which means for every degree above 25°C , a solar panel's output falls by a miniscule 0.32%

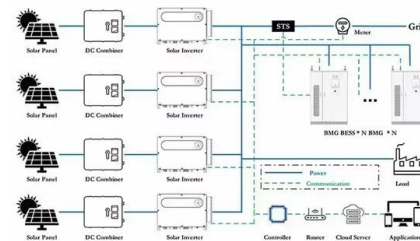


[Solar Panel Output Calculator UK 2024](#)

If you're planning to cut your energy bills and help the climate by getting solar panels on your roof, you'll want to know exactly how much electricity they can produce and which is the most efficient solar panel. Learning about ...

[How Much Power \(Watts\) does a Solar Panel ...](#)

Solar panel output per square meter. The most common domestic solar panel system is 4 kW. And it has 16 panels, each of which is about 1.6 square meters (m2) in size. How much energy does a solar panel produce? As you have ...



[Solar Panel Radiation - The Complete Guide](#)

Just like with utility smart meters, there may be a way for you to opt-out of having a solar panel smart meter. Many of these meters are installed by power companies ...



How Much Electricity Does a Solar Panel Produce, UK?

How Much Electricity Does a Solar Panel Produce, UK? According to Statista, in 2023 UK solar panels generated an impressive 15,225 gigawatt hours of electricity. That ...



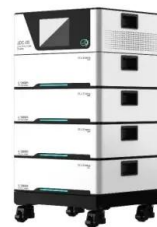
[Solar Panel Sizes and Wattage Explained](#)

Solar Panel Size. It focuses on maximum electricity generation and overall capacity rather than the quantity of panels. To calculate the required system size, multiply the number of panels by the output. For example, a 6.6 ...



How Many Solar Panels Do I Need For My UK Home? 2024 ...

How many solar panels do I need for 2,000kWh per month? Assuming sunshine hours of 3.5 to 4 per day, 35 to 40 400W solar panels would be enough to generate 2000kWh per month. The ...



How Many Solar Panels Do I Need? UK Guide to Accurate ...

It is also essential to consider the available roof space when calculating the size of the solar panel system. Solar panels usually have an area of 1.3-1.7m², with 1.6m being the most common ...



How Many Solar Panels Do I Need To Power a House?

How many solar panels do you need to power a house? That depends on a few things -- and we'll show you exactly how to find out. averages 1,000 watts per square ...



The Complete Guide for Solar Panel Connectors

To connect solar panels in parallel, you require an additional component known as an MC4 combiner (or MC4 multi-branch connector), this name differs for other types ...

How many solar panels do you need to power a UK home?

The final question remains: how many panels will you need to power your home, and do you have space for them? To answer this, we need to look at how much energy solar ...



Contact Us

For catalog requests, pricing, or partnerships, please visit:
<https://vdbconstruction.co.za>