

How many square meters are 1 trillion photovoltaic panels





Overview

Dividing the global yearly demand by 400 kW•h per square meter (198,721,800,000,000 / 400) and we arrive at 496,804,500,000 square meters or 496,805 square kilometers (191,817 square miles) as the . How much energy does a solar panel use per square meter?

On average, you can expect around 850 to 1,100 kilowatt-hours (kWh) of solar energy per square meter (approximately 10.764 square feet) annually. Panel Efficiency: Solar panel efficiency determines how well the panel converts sunlight into electricity. The efficiency of commercially available solar panels is around 15% to 24.5%.

How many solar panels kWh do I Need?

You need 24 to 25 solar panels kwh to get a solar panel output of 1000 kWh. The solar panel calculator helps to figure out how many solar panels you need and determine the right system size and roof area requirements for your system.

How many solar cells are in a solar panel system?

Number of Solar Cells The most common categorization of solar cells is in 60-cell solar panels and 72-cell solar panels. The former one means there are almost 60 solar cells in the solar panels and the latter determines the usage of 72 solar cells. There is an extra row of solar cells in a 72-cell solar panel system.

How much space is needed to power the world with solar panels?

Dividing the global yearly demand by 400 kW•h per square meter (198,721,800,000,000 / 400) and we arrive at 496,804,500,000 square meters or 496,805 square kilometers (191,817 square miles) as the area required to power the world with solar panels. This is roughly equal to the area of Spain. At first that sounds like a lot and it is.

What is a solar panel calculator?



Whether you want to help our planet or just save some money, the solar panel calculator might be just the tool you want to use. It's created to help you find the perfect solar panel size for your house depending on how much of your electric bill you'd like to offset.

How much power does a solar panel produce?

When we talk about solar panels, we usually refer to the power produced in watts (W) or kilowatts (kW). An example of this in context would be that the average household requires a 3.8-6kW system to produce enough electricity to cover most of the electrical requirement.



How many square meters are 1 trillion photovoltaic panels



How Many Solar Panels Do I Need To Power a House?

A peak sun hour is when the intensity of sunlight (known as solar irradiance) averages 1,000 watts per square meter or 1 kW/m². When you think of solar, you probably ...

How many solar panels do I need? Our guide to sizing up your ...

When translating your energy needs into solar panel numbers, remember that a typical 350W solar panel produces around 265kWh per year in the UK. So if you use ...



Solar Panel Calculator

You need 24 to 25 solar panels kwh to get a solar panel output of 1000 kWh. The solar panel calculator helps to figure out how many solar panels you need and determine the right system size and roof area requirements for your system.



How Many Solar Panels To Produce A Gigawatt? (November 2024)

The amount of space needed for a 1-gigawatt solar farm will vary depending on the region and the orientation of the solar array. Depending on the geographic location, the ...



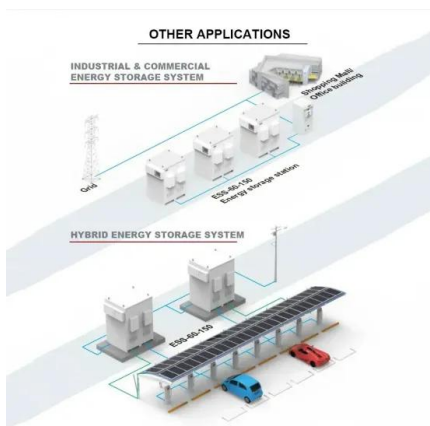
[Solar Power Per Square Meter Calculator](#)

How much power do solar panels produce per square meter? To answer this, there's a number of factors to consider. Table - Compare solar panel power production for cities in US and UK. Location Average Daily kWh ...



Solar Rooftop Calculator: How Many Solar Panels Can Fit On ...

Now, by average solar panel wattage per square foot, we can put a 10.35kW solar system on an 800 sq ft roof. This is how many solar panels you can put on this roof: If you only use 100-watt ...



[How Many Solar Panels Do I Need](#)

Solar panel efficiency typically ranges from 15% to 20%. As a consequence, a portion of the solar radiation that strikes the solar panels for houses remains unreformed into electrical energy. Consequently, the daily ...



Solar panel output: How much electricity do they produce?

The higher the efficiency rating, the more electricity it will produce per square metre. Here's what you can expect from different solar panel types: Monocrystalline: 18-24% ...



How much energy do solar panels produce for your home?

1. Solar panel output per day. Work out how much electricity--measured in kilowatt hours (kWh)--your panels would produce each day by using this formula: Size of one solar panel (in ...

How to Calculate the Surface Area Required by Solar ...

One square meter can produce about 200 Watts and the cost of the solar system is about \$1 to \$2 per Watt depending upon how much backup you want. Solar panels can produce peak power for about 5 hours daily.



Guide to Solar Panel Sizes & Dimensions (November 2024)

Solar panel sizes and wattage range from 250W to 450W, taking up 1.6 to 2 square metres per panel. For instance, a typical 2kW solar panel system suited for 1-3 ...



[Solar Panel Output Calculator UK 2024](#)

If you're planning to cut your energy bills and help the climate by getting solar panels on your roof, you'll want to know exactly how much electricity they can produce and which is the most efficient solar panel. Learning about ...



Total Surface Area Required to Fuel the World With Solar

Dividing the global yearly demand by 400 kWh per square meter ($198,721,800,000,000 / 400$) and we arrive at 496,804,500,000 square meters or 496,805 square kilometers (191,817 square miles) as the area ...



[Solar Panel Cost Calculator UK](#)

A 3.5 kWp solar panel system would typically require around 10 solar panels (at 350 W each) and cost between £5,000 and £10,000. *kWp stands for 'kilowatt peak'. This is the amount of power that a solar panel or array will ...



How much energy does a solar panel produce? Measuring solar ...

How much energy does a solar panel produce? As mentioned above, the two main factors that determine solar panel energy output are panel power and sunshine. In the UK, a typical solar ...





Solar Panel Calculator , Solar PV System Calculator

Use this calculator to quickly estimate how many large solar panels you could fit onto a roof and roughly calculate how much power they could generate (kWhrs). The number of panels, the ...

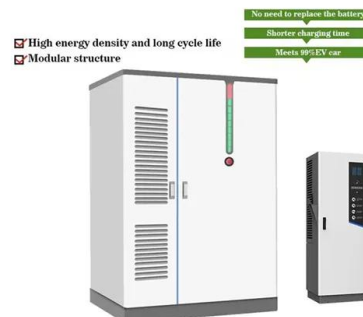


How Many Solar Panels Do I Need in the UK? (November 2024)

Most roofs can easily manage 10kg per square meter, while the average weight load of a solar panel on a slanted roof is about 1.3kg per square meter (2.3kg per m2 on a flat ...

How Many Solar Panels Can Fit on One Acre of Land?

Learn the typical solar panel density and land usage for utility-scale solar farms in this guide. One square meter of solar panels, in full sun, can make roughly 1 kilowatt-hour each hour for 6 hours. An acre has about ...



Deye inverters and Deye batteries are more compatible.

How many solar panels do you need to power a UK home?

The best way of knowing exactly how much energy you use at home is to install a smart meter. According to the Renewable Energy Hub, domestic solar panel systems ...



A Complete Guide on Solar Panel Calculations (2023 Update)

For instance, assuming a solar panel has a surface area of 1.6 square meters and the highest power output of 200W, then its efficiency would be: $\text{Efficiency} = [(200 \div 1.6) \div \dots]$



How Many Solar Panels Do I Need to Power My ...

Solar Panel Type and Efficiency. While useful references, these maps fail to consider the type of photovoltaics installed at each location. Most weigh no more than 10-20kg per square meter, including mounting hardware. ...

How Much Power Do Solar Panels Produce Per Square Meter?

How much energy does a solar panel create per square meter? The average solar panel has an input rate of roughly 1000 Watts per square meter, while the majority of solar panels on the ...



Solar Panel Watts Per Square Meter Explained

How to Calculate Solar Panel Watts per Square Meter. Calculating watts per square meter (W/m) is simple: Calculate total watts generated: Multiply the power output of a single panel by the ...



How much Space do I need for Solar Panels? UK Guide 2024

A solar power per square meter calculator takes details regarding these factors and then gives the accurate output generated by the solar panel per square meter. After this, it's time to learn about solar panel output ...



DETAILS AND PACKAGING



- 1 USER MANUAL PDF
- 2 RJ45 Cable For RS485/CAN
- 3 Battery in Parallel Cables
- 4 RJ45 TO USB Monitor Cable
- 5 M8 Terminal*4

How Many Solar Panels Needed For 1 MW POWER ...

Average Power Output per Solar Panel. The average power output of a solar panel is typically measured in watts (W). It varies based on the panel's efficiency and the solar irradiance it receives. For example, a standard ...

[How to Calculate Solar Panel KWp \(KWh Vs. KWp\)](#)

To calculate the KWp (kilowatt-peak) of a solar panel system, you need to determine the total solar panel area and the solar panel yield, expressed as a percentage. Here are the steps involved in this calculation: 1. ...



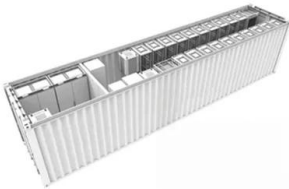
[Solar Power Per Square Meter Calculator](#)

How many square meters of solar panels do you need? Try our solar panel cost calculator if you want to work out what size of solar system you need to save money whilst being grid-tied. We've also written in more detail ...



Photovoltaics

Calculator for the power per area or area per power of a photovoltaic system and of solar modules. You can enter the size of the modules and click from top to bottom, or omit some steps and start e.g. with the surface area.



[Solar Panels Sizes and Weights \(All Sizes\)](#)

On average, a solar panel can provide 15 watts per square foot. Let's start by breaking down the average dimensions of different solar panels by size. 200-watt solar ...

Contact Us

For catalog requests, pricing, or partnerships, please visit:
<https://vdbconstruction.co.za>