

# **How many square meters are there for a 620w photovoltaic panel**





## Overview

---

What is solar panel watts per square meter (W/M)?

Solar panel watts per square meter (W/m) measures the power output of a solar panel based on its size. Compare solar panels to see which generates most electricity per square meter. A higher W/m value means a solar panel produces more power from a given area. This can help you determine how many solar panels you need for your energy needs.

How many Watts Does a solar panel produce?

Watt (W) = the amount of power the solar panels are capable of producing  
Kilowatt (kW) = 1,000 Watts  
Watt-hour (Wh) = the amount of watts solar panels produce over an hour  
How big are solar panels?

You should note that when this guide talks about a solar panel's size, it's referring to its physical measurements - its dimensions.

How much energy does a solar panel use per square meter?

On average, you can expect around 850 to 1,100 kilowatt-hours (kWh) of solar energy per square meter (approximately 10.764 square feet) annually. Panel Efficiency: Solar panel efficiency determines how well the panel converts sunlight into electricity. The efficiency of commercially available solar panels is around 15% to 24.5%.

How do you measure solar panel efficiency?

To measure this efficiency, use solar panel Watts per square meter (W/m). This metric shows how much power a solar panel produces per square meter of surface area under standard conditions. By knowing W/m, you can: Install solar panels and maximize your energy output! What is Solar Panel Efficiency?

.

How much power does a small solar panel generate?



Although, please note that they will not generate as much power as standard-sized solar panels, but that goes without saying. In terms of power, small solar panels typically start at around 50 watts but can go all the way up to 150 watts. Recommended solar reading:.

What is solar panel efficiency?

Solar panel efficiency is crucial for a solar power system's success. High-efficiency panels convert more sunlight into electricity, boosting overall output. To measure this efficiency, use solar panel Watts per square meter (W/m). This metric shows how much power a solar panel produces per square meter of surface area under standard conditions.



## How many square meters are there for a 620w photovoltaic panel



### Solar Panel Sizes And Wattage , Sizing, Dimensions & Weight

A solar photovoltaic (PV) system's size or capacity is the maximum amount of electricity it can produce. It isn't about the number of solar panels but the system's overall ...

### [Solar Panel Sizes & Dimensions UK \(2024\)](#)

In particular, there are solar panel kits for caravans that come with solar panels that are around four times smaller than the average. For example, instead of the typical 2-meter solar panel, they are around 0.5 metres.



### [How much energy does a solar panel produce?](#)

How much energy does a solar panel produce? As mentioned above, the two main factors that determine solar panel energy output are panel power and sunshine. In the UK, a typical solar panel has a power rating of 350W (watts), ...

### [Solar Panel Watts Per Square Meter Explained](#)

Solar panel watts per square meter (W/m) measures the power output of a solar panel based on its size. Compare solar panels to see which generates most electricity per square meter. A higher W/m value means a solar panel ...



### How Many Solar Panels Do I Need to Power My House?

There are a lot of factors that must be considered, including: The above map shows Global Horizontal Irradiance and projected electricity production per m<sup>2</sup> (square meter) ...

### How many solar panels do I need for my home in 2024?

Solar panel cost There is a consideration for how many solar panels to buy without including cost. Solar panels cost \$2.75/W on average. Square footage of different ...



### How Many Solar Panels Do I Need in the UK?

Specific Photovoltaic Power Output (PVOUT) = The annual electricity output per each kilowatt of solar panel capacity, assuming favourable site conditions. Optimum Tilt of PV Modules (OPTA) = The tilt angle that ...



Solar Panels Sizes and Weights (All Sizes)

They weigh 6.48 kilograms per square meter. 60-cell solar panels that are 20 kilograms and measure 1.68 meters long by 1.01 meters wide have an area of 1.70 meters squared. Thus, they weigh 11.76 kilograms per ...



**Solar Rooftop Calculator: How Many Solar Panels Can ...**

Now, by average solar panel wattage per square foot, we can put a 10.35kW solar system on an 800 sq ft roof. This is how many solar panels you can put on this roof: If you only use 100-watt solar panels, you can put 103 100-watt solar ...



**(PDF) Spatial layout optimization for solar photovoltaic (PV) panel ...**

Spatial layout of solar PV panels (a) 99.8% coverage with  $p = 26$ ; (b) 79.7% coverage with  $p = 15$ . 325 Figure 6 shows the coverage achieved based on the four different ...



How to Calculate Solar Panel kWh

1. Determine the Size of One Solar Panel. Multiply the size of one solar panel in square meters by 1,000 to convert it to square centimeters. Example: If a solar panel is 1.6 ...





### How do solar cells work? Photovoltaic cells explained

There are many photovoltaic cells within a single solar module, and the current created by all of the cells together adds up to enough electricity to help power your home. A ...



### How Many Solar Panels Needed For 1 MW POWER (Updated)

Average Power Output per Solar Panel. The average power output of a solar panel is typically measured in watts (W). It varies based on the panel's efficiency and the solar ...

### Solar Panel Calculator

The Efficiency of Photovoltaic Cells ; Solar Panel Wattage; Here peak sun hours mean the time at which the light of the sun equals 1000 watts per square meter. For more precise ...



### How Many Solar Panels Do I Need in the UK? (November 2024)

Most roofs can easily manage 10kg per square meter, while the average weight load of a solar panel on a slanted roof is about 1.3kg per square meter (2.3kg per m2 on a flat ...



### [Solar Power per Square Meter Calculator](#)

A solar power per square meter calculator takes details regarding these factors and then gives the accurate output generated by the solar panel per square meter. After this, ...



### Square Footage Calculator

Calculate square footage, square meters, square yardage and acres for home or construction project. Calculate square feet, meters, yards and acres for flooring, carpet, or tiling projects. Enter measurements in US or ...

### Photovoltaics

Calculator for the power per area or area per power of a photovoltaic system and of solar modules. You can enter the size of the modules and click from top to bottom, or omit some steps and start e.g. with the surface area.



### 4 Different Types Of Solar Panels (2022): Cost, Efficiency & Power

Each panel consists of several individual solar cells. Most commonly used solar panels are of 72 cells & 60 cells, which have a size of 2m x 1m & 1.6m x 1m respectively.



### Solar Panel Sizes & Dimensions UK (2024)

This not only includes dimensions but also wattage and weight. In this guide, we will answer the most frequently asked questions so you know exactly what size panels you need for your solar PV system. Your roof size ...

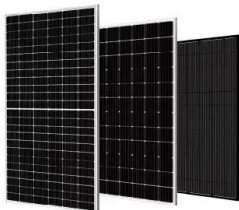


### Solar Panel Sizes, Dimensions & Weight

The dimensions of the panel - height x width measured in metres or centimetres. The maximum power output of the panel - measured in wattage, or 'W' The size of a solar ...

### Solar Irradiance and Solar Irradiation

Our sun is an excellent source of radiant energy. The amount of solar energy per unit area arriving on a surface at a particular angle is called irradiance which is measured in watts per square metre,  $W/m^2$ , or kilowatts per square metre, ...



### How to Choose Solar PV Panel Size

(There is some variation because manufacturers use different frame sizes.) the installation of 1KW is about 8 square meters; if you want to install a 15KW PV power plant, ...



### A Guide to Solar Panel Dimensions

There are many different sizes of solar panels, but the two most frequently used sizes are: A 60-cell solar panel. 39x--66 inches; 3.25x--5.5 feet; A 72-cell solar panel . ...

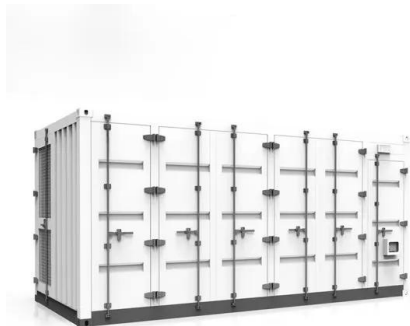


### Solar Panel Dimensions Sizes and Wattage

Solar panel dimensions is an essential criterion to consider when planning a photovoltaic solar installation. How big is a standard solar panel? There is no "standard" ...

### **How to Calculate Solar Panel KWp (KWh Vs. KWp + Meanings)**

1. Find the total solar panel area (A) in square meters by multiplying the number of panels with the area of each panel. 2. Determine the solar panel yield (r), which ...



### **How Much Solar Power Can My Roof Generate? , EnergySage**

850 square feet of usable roof space for solar: The average U.S. roof is about 1,700 square feet. You should never put panels on northern roof planes. So with a north/south ...



## Guide to Solar Panel Sizes & Dimensions (November ...

Solar cell dimensions are typically around 189 x 100 x 3.99cm (6.2 x 3.28 x 0.13 feet), while solar panel dimensions are usually between 1.6m<sup>2</sup> to 2m<sup>2</sup> (17.22 to 21.53 square feet). The physical size of the solar panel is ...



## Contact Us

---

For catalog requests, pricing, or partnerships, please visit:  
<https://vdbconstruction.co.za>