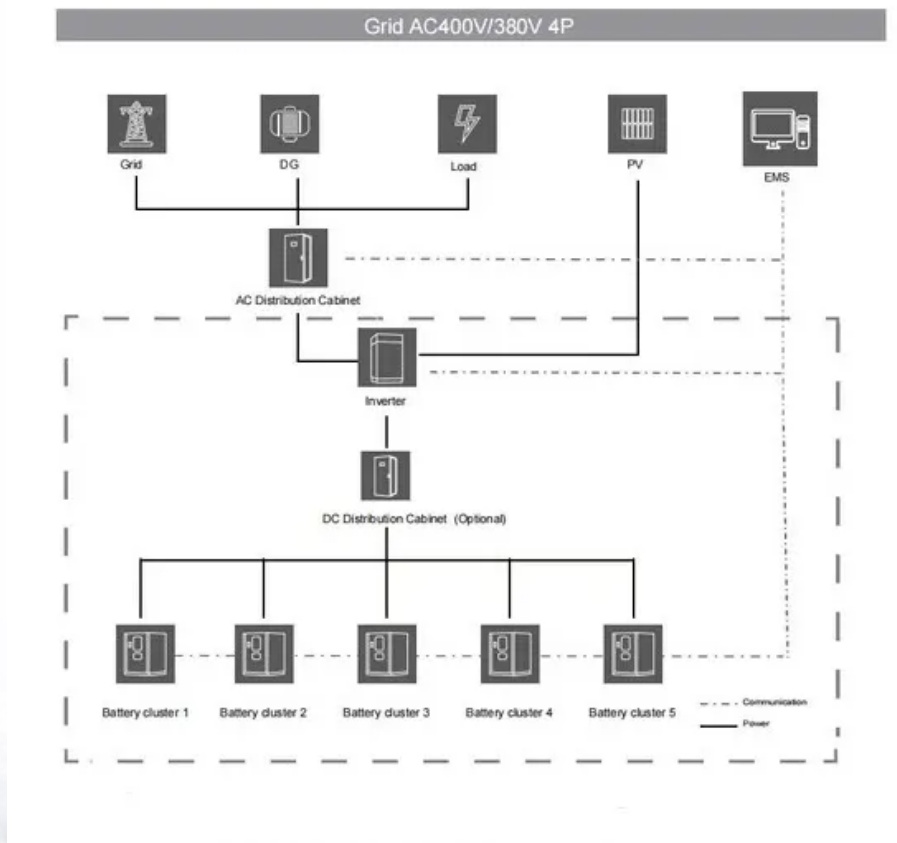


How many square meters does a watt of photovoltaic panel cover





Overview

What is solar panel watts per square meter (W/M)?

Solar panel watts per square meter (W/m) measures the power output of a solar panel based on its size. Compare solar panels to see which generates most electricity per square meter. A higher W/m value means a solar panel produces more power from a given area. This can help you determine how many solar panels you need for your energy needs.

How many Watts Does a solar panel use per square foot?

Dividing the specified wattage by the square footage of the solar panel will give us just this result: The average solar panel output per area is 17.25 watts per square foot. Let's say that you have 500 square feet of roof available for solar panel installation. What is theoretically the biggest solar system you can put on that roof?

.

How much power does a solar panel produce?

(The most powerful solar panel we recommend, the JA Solar JAM72S30 Mono PERC Half-Cell MBB, has a power output of between 525W and 550W.)

Understanding solar panel wattage is vital to picking a solar panel powerful enough to meet your home's electricity needs.

What is solar panel wattage?

Solar panel wattage refers to the amount of power a solar panel can generate under standard test conditions (STC). Measured in watts, solar panel wattage refers to the maximum power output a solar panel can produce when exposed to sunlight.

What is the size of a solar panel?

The size of a solar panel is measured in watts, which indicates the amount of



power it can generate. The most common solar panel sizes for residential installations are between 250W and 400W, while larger commercial installations may use panels up to 500W or more.

How many solar panels are in a 20 x 330 watt solar system?

The number of solar panels x output = Solar system size
 $20 \times 330\text{W panels} = 6,600\text{ W}$ or 6.6kW solar system
The number of solar panels multiplied by their output determines the size of the solar system. For example, if you have 20 solar panels with a wattage of 330W each, it results in a 6,600 W or 6.6kW solar system.



How many square meters does a watt of photovoltaic panel cover



[Solar Panel Watts Per Square Meter Explained](#)

Solar panel watts per square meter (W/m) measures the power output of a solar panel based on its size. Compare solar panels to see which generates most electricity per square meter. A higher W/m value means a solar panel ...

How Many Solar Panels Do I Need? Solar Panel ...

The following formula will help you work out the output of each panel: Solar panel watts x average hours of sunlight x 0.75 = daily watt-hours . You may ask what the x 0.75 is for? This helps to account for variables we ...



Standard 20ft containers



Standard 40ft containers

Solar Panel Sizes And Wattage , Sizing, Dimensions & Weight

The power generated by a solar panel is measured in watts (W), which correspond to the panel's optimum sunshine and temperature conditions. For much of the ...

[How Much Solar Power Can My Roof Generate?](#)

850 square feet of usable roof space for solar:
The average U.S. roof is about 1,700 square feet. You should never put panels on northern roof planes. So with a north/south roof, that gives you 850 square feet. 400 ...



[Average Solar Panel Output Per Day: UK Guide](#)

How much power does a solar panel produce per day in UK? Now learn all about the average solar output per day, month, and year for solar panels in this article. solar ...



[How Many Solar Panels Do I Need in the UK?](#)

The average home needs 8 to 13 panels for a 4kW system to cover its electricity needs (2,700kWh annually on average).; A 2 bedroom house requires 4 to 8 panels, a 3 bedroom house needs between 8 and 13 panels, ...



[150 watt Solar Panel: How Many Amps ...](#)

A 12v 150 watt solar panel will produce about 18.3 volts and 8.2 amps under ideal sunlight conditions. (inc. 1kw/m² of sunlight intensity, no wind, and 25 o C temperature). The above values are based on DC (Direct current) ...





How to Calculate the Surface Area Required by Solar Panels

Suppose the area is A square meters then the equation becomes. $1000 \times 0.20 \times A = 25000$. $200 \times A = 25000$. $A = 25000 / 200$. $A = 125$ square meters. This is for panels lying ...



[Solar Power Per Square Meter Calculator](#)

What do solar panels produce per m²? Six factors to consider. The amount of power solar panels produce per square meter varies depending on the type of solar panel, ...



51.2V 150AH, 7.68KWH

[Solar Panel Sizes & Dimensions UK \(2024\)](#)

The size of a solar panel is measured in watts, which indicates the amount of power it can generate. The most common solar panel sizes for residential installations are ...



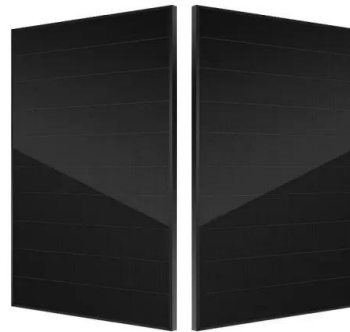
Solar Panel Output: How Much Power Does a Solar Panel Produce...

On average, solar panels designed for domestic use produce 250-400 watts, enough to power a household appliance like a refrigerator for an hour. To work out how much ...



How Much Power Do Solar Panels Produce Per Square Meter?

The average solar panel has an input rate of roughly 1000 Watts per square meter, while the majority of solar panels on the market have an input rate of around 15-20 percent. As a result, ...



Solar Panel Calculator , Solar PV System Calculator

The more directly a solar panel faces the sun, the more light the panel will receive, the more power it will produce. 1001mm, Output: 320 Watts (per panel) Mounting: Roof mounted, ...

Solar panel output: How much electricity do they produce?

A solar panel's output is expressed in watts (W). One way you can do this is by checking the solar panel meter, which - it should be somewhere accessible in your home. ...



How to calculate how many solar panels you need.

We'll use 400-watt panels in these calculations because 390-400 W is the most quoted capacity range on the EnergySage Marketplace, according to you'll be able to produce enough ...



[Solar Panel Sizes, Dimensions And Wattage](#)

The wattage of solar panels directly affects kilowatt-hour (kWh) production, making it necessary to consider the wattage of solar panels for accurate system sizing. Check out our page to learn more about the difference ...

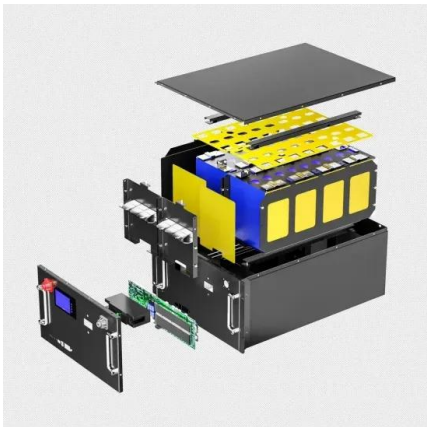


[Solar Panel Sizes & Dimensions UK \(2024\)](#)

You can put a 7.763 kW solar system on a 600 sq ft room. If you use only 100-watt panels, you will be able to fit 77 of them on the roof. If you use only 300-watt panels, you will be able to fit 25 of them on the roof. If you use only 400-watt ...

[Solar Energy Per Square Meter](#)

Solar energy per square meter, or "watts per square meter" (W/m^2), is a measure of the amount of solar energy that is received per unit area on a surface. and the ...



How many solar panels do you need to power a UK home?

In that case, you can use this helpful solar power calculator from the Solar Centre UK to work out how many panels you're likely to need for your house. But remember, sunshine ...



[Solar Power per Square Meter Calculator](#)

A solar power per square meter calculator takes details regarding these factors and then gives the accurate output generated by the solar panel per square meter. After this, ...



[Solar Panels Sizes and Weights \(All Sizes\)](#)

The following are some key topics that we will cover: Sizes of solar panels; they weigh 13.66 kilograms per square meter. Pounds per Foot. A 100-watt solar panel that is 18.8 pounds and measures 3.92 feet long by 1.78 ...

How Much Power (Watts) does a Solar Panel Produce?

Solar panel output per month. Based on the above-mentioned formula, you can easily get the daily data. So to get the monthly power output, you simply calculate the daily figure then ...



Need Help Deciding How Many Solar Panels You Require? This ...

By dividing 350 by 1,000, we can convert this to kilowatts or kW. Therefore, 350 watts equals 0.35 kW. Step 5. Determine the required number of solar panels: Divide the daily energy production



How Much Energy Does A Solar Panel Produce? , EnergySage

Most home solar panels that installers offer in 2024 produce between 350 and 450 watts of power, based on thousands of quotes from the EnergySage Marketplace. Each of ...

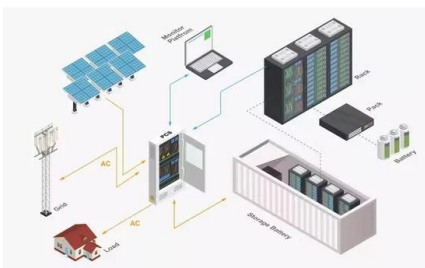


How Many kWh Does A Solar Panel Produce Per Day? Calculator ...

Now you can just read the solar panel daily kWh production off this chart. Here are some examples of individual solar panels: A 300-watt solar panel will produce anywhere from 0.90 to ...

Standard Solar Panel Sizes And Wattages (100W-500W ...

How many watts per square foot can a solar panel generate? Dividing the specified wattage by the square footage of the solar panel will give us just this result: The average solar panel output per area is 17.25 watts per square foot. ...



[How to Calculate Solar Panel kWh](#)

Multiply the size of one solar panel in square meters by 1,000 to convert it to square centimeters. Example: If a solar panel is 1.6 square meters, the calculation would be $1.6 \times 1,000 = 1,600$ square centimeters. 2. ...



Contact Us

For catalog requests, pricing, or partnerships, please visit:
<https://vdbconstruction.co.za>