

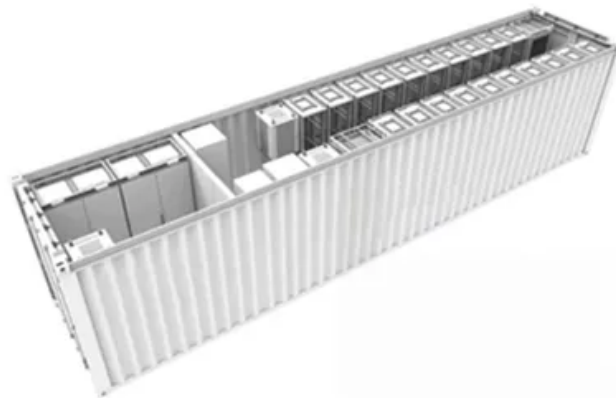
How many square meters of cable are there for a 10M photovoltaic panel



 TAX FREE

1-3MWh

BESS





Overview

Can I use a 1.5mm solar cable for a 10kW Solar System?

Yes, you can use a 1.5mm solar cable for solar power systems. There are several 1.5mm solar cables available for purchase, and they are suitable for connecting solar panels and solar generators. After this, let's find out what size cable for a 10kW solar system is most suitable.

Can I use a 2.5 mm cable for solar?

Yes, you can use a 2.5 mm cable for solar panels. In fact, it is one of the most popular sizes for DC cable. Now, let's see if you can use a 1.5mm cable for solar or not. [Can I Use a 1.5 mm Cable for Solar?](#)

Yes, you can use a 1.5mm solar cable for solar power systems.

What size cable do I need for a 24V solar panel?

For instance, for a 24V panel, if you have a 10 Amp load, and need to cover a distance of 100 feet with a 2% loss, you calculate a VDI value of 20.83. So, based on this table data, you will need a 4 AWG cable. Cross-Reference: [Selecting wire size based on voltage drop for solar systems](#) [Can I Use a 2.5 mm Cable for Solar Panels?](#)

.

What size solar cable do I Need?

For a 20kW 12V renewable energy system with less than 5% voltage loss, you will require a two-core cable with at least 0.5 sq. mm cross-section. In summary, the solar cable sizing calculator is a vital resource for both professionals and enthusiasts in the solar energy industry.

How to choose a solar panel cable?

The power producing capacity of your solar panel. The bigger the electric



power created, the bigger the size of the PV cable should be. The distance of the PV panel to components and the loads. The farther the distance, the bigger the size of the solar cable to use.

How many amps can a solar panel use?

Based on your requirements and relevant parameters, you can utilize various DC and AC solar cable sizing calculators to determine the suitable wire size for your solar power system. Commercial panels over 50 watts use 10 gauge wires, allowing up to 30 amps per solar panel.



How many square meters of cable are there for a 10M photovoltaic



How Many Solar Panels Do I Need in the UK? (November 2024)

Most roofs can easily manage 10kg per square meter, while the average weight load of a solar panel on a slanted roof is about 1.3kg per square meter (2.3kg per m2 on a flat ...

How Many Solar Panels Do I Need? A Guide For NZ Homes

In fact, there's a lot to consider when picking a system size and therefore the right amount of solar panels. If you want to take the easy route and get a specialist to make a recommendation for ...



Solar Cable , Solar Panel Cable , Photovoltaic Cable , PV Cable

PV cable is used to connect solar panel together They're suitable for internal and external installations and also connect the solar cells to the inverter or the DC mains cable. Our range ...

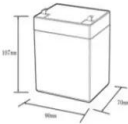

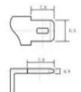


How Many Solar Panels Do I Need For My UK Home?

Do I have enough space on the roof for this many panels? Each solar panel can be 2m 2, if you require 10 can you ensure you have 20m2 this is down to how many people live there and if you need to power larger appliances for longer ...



12.8V6Ah

Nominal voltage (V):12.8
 Nominal capacity (ah):6
 Rated energy (Wh):76.8
 Maximum charging voltage (V):14.6
 Maximum charging current (a):6
 Floating charge voltage (V):13.6-13.8
 Maximum continuous discharge current (a):10
 Maximum peak discharge current @ 10 seconds (a):20
 Maximum load power (W):100
 Discharge cut-off voltage (V):10.8
 Charging temperature (°C):0-+50
 Discharge temperature (°C): -20-+60
 Working humidity: $\le 95\%$ RH (non condensing)
 Number of cycles (25 °C, 0.5C, 100%DoD): >2000
 Cell combination mode: 32700-4s1p
 Terminal specification: T2 (6.3mm)
 Protection grade: IP65
 Overall dimension (mm):50*70*107mm
 Reference weight (kg):0.7
 Certification: un38.3/msds

[Solar Panel Sizes & Dimensions UK \(2024\)](#)

In particular, there are solar panel kits for caravans that come with solar panels that are around four times smaller than the average. For example, instead of the typical 2-meter solar panel, they are around 0.5 ...

How Much Solar Power Can My Roof Generate? , EnergySage

So with a north/south roof, that gives you 850 square feet. 400-watt solar panels that are 20 square feet in size: This is the most frequently quoted panel power output ...



[Off-grid Solar Cable Size Calculator](#)

Solar cable is also referred to as 'PV wire' or 'PV cable'. Cable is the correct technical term as wires are simpler connectors than what we typically use for solar. Cable will typically run ...





Solar Panel Watts Per Square Meter Explained

How to Calculate Solar Panel Watts per Square Meter. Calculating watts per square meter (W/m) is simple: Calculate total watts generated: Multiply the power output of a single panel by the ...



FLEXIBLE SETTING OF MULTIPLE WORKING MODES



How Far Can I Run My Solar Panel Cables & And the Battery

There are several ways to reduce losses from photovoltaic cells over long distances: 1) Use mirrors to concentrate sunlight onto photovoltaic cells: By using mirrors to ...

Solar Power per Square Meter Calculator

A solar power per square meter calculator takes details regarding these factors and then gives the accurate output generated by the solar panel per square meter. After this, ...



(PDF) Spatial layout optimization for solar ...

Spatial layout optimization for solar photovoltaic (PV) panel installation. December 2019; installation was assumed to be 10m 2 following the NREL's resulting in grids of one square. 283.



How Much Power Do Solar Panels Produce Per Square Meter?

The average solar panel has an input rate of roughly 1000 Watts per square meter, while the majority of solar panels on the market have an input rate of around 15-20 percent. As a result, ...



Solar explained Photovoltaics and electricity

Photovoltaic cells convert sunlight into electricity. A photovoltaic (PV) cell, commonly called a solar cell, is a nonmechanical device that converts sunlight directly into ...

TUV Solar DC Cable 4mm 6mm 10mm 16mm Solar Panel Wire and Cable ...

When the length is not enough, a special extension cable can also be used. According to the different power size of the component, this kind of connecting cable has a cross-sectional area ...



Proster Solar Panel Extension Cable 10m 4mm² with IP68 ...

Solar connector Y branch parallel adapter Solar panel cable Photovoltaic plug distributor. Solar Extension Cable Wire Kit 3 meters - Weatherproof, Tinned Copper Cable Connector for Rust ...



Standard Solar Panel Sizes And Wattages (100W-500W ...

How many watts per square foot can a solar panel generate? Dividing the specified wattage by the square footage of the solar panel will give us just this result: The average solar panel output per area is 17.25 watts per square foot. ...



How to Size The Solar Cable for Your Photovoltaic System

The alternating current solar PV cables must meet the general conditions of the standard. The section of the phase cables cannot be less than the value specified in Table 47. ...

How do solar cells work? Photovoltaic cells explained

There are many photovoltaic cells within a single solar module, and the current created by all of the cells together adds up to enough electricity to help power your home. A standard panel used in a rooftop residential array ...



Solar Panel Sizes And Wattage , Sizing, Dimensions & Weight

A solar photovoltaic (PV) system's size or capacity is the maximum amount of electricity it can produce. It isn't about the number of solar panels but the system's overall ...



Contact Us

For catalog requests, pricing, or partnerships, please visit:
<https://vdbconstruction.co.za>