

How many square meters of photovoltaic cable are required for a 400W photovoltaic panel





Overview

What size solar panel do I Need?

The most common solar panel sizes for residential installations are between 250W and 400W, while larger commercial installations may use panels up to 500W or more. The size of a solar panel affects its efficiency, with larger panels generally being more efficient but also more expensive and heavier.

What is the size of a solar panel?

The size of a solar panel is measured in watts, which indicates the amount of power it can generate. The most common solar panel sizes for residential installations are between 250W and 400W, while larger commercial installations may use panels up to 500W or more.

How many solar panels do I Need?

For instance, a typical 2kW solar panel system suited for 1-3 people will need anywhere between 5 and 8 solar panels (for 350W panels). This assumes you'll receive about 4 hours of sunlight a day and the positioning and efficiency of the solar panels is optimal.

How much power does a solar panel use?

The majority of solar panels for sale in the UK average around 350 watts (W) in power for residential units. However, it's quite easy to get your hands on more powerful solar panels, often up to 500 W if you have an extra large house with a lot of power demands.

How to calculate solar panel output?

To find the solar panel output, use the following solar power formula: $\text{output} = \text{solar panel kilowatts} \times \text{environmental factor} \times \text{solar hours per day}$. The output will be given in kWh, and, in practice, it will depend on how sunny it is since the number of solar hours per day is just an average. How to calculate the solar panels needs for camping?



How many watts can a 1m² solar panel produce?

Imagine a solar panel has a conversion efficiency of 100% i.e. it converts all the solar energy into electrical energy then all you would need is a 1 m² solar panel to produce 1000 Watts of electrical energy :). More than 20 years of experience in various organizations in Pakistan, the USA, and Europe.



How many square meters of photovoltaic cable are required for a 400



400 & 500 Watt Solar Panels: What is Best for You?

A 400 W solar panel does what it sounds like - one panel produces an output of 400 watts of electricity, which yields approximately between 1.2 and 3 kilowatt hours (kWh) daily. How much electricity your ...

Guide to Solar Panel Sizes & Dimensions (November ...

Solar panel sizes in the UK are generally between 250W and 450W for domestic installations, with physical dimensions typically measuring around 189 x 100 x 3.99 cm (6.2 x 3.28 x 0.13 feet). For commercial ...



How Many Solar Panels Needed For 1 MW POWER (Updated)

Assuming an average power output of 200 W per panel and accounting for a 15% efficiency loss, we can calculate the number of panels needed for 1 MW.. $1 \text{ MW} = \dots$

The Ultimate Guide to EcoFlow Solar Panel Specs

Monocrystalline solar panels offer more efficiency per square meter than polycrystalline or thin film panels (where efficiency dips into the single digits). EcoFlow's PV ...



How Many Solar Panels Are Needed For A Hot Water Heater?

The space on your roof where the solar panels are to be placed needs to be at least 2-5 square meters and away from the shade of neighboring buildings and surrounding ...



4kW solar panel systems , Costs & output [UK, 2024]

If you have a 400W panel, it will produce 400 watt-hours in standard test conditions, which includes a cell temperature of 25°C and solar irradiance of 1,000W per m², ...



400-watt Solar Panels Explained: Everything You Need ...

400-watt solar panels are photovoltaic (PV) panels that can generate up to 400 watts of instantaneous electrical energy under ideal Standard Test Conditions. Standard Test Conditions (STC) are specific conditions used ...



How Many Solar Panels Do You Really Need for UK Homes?

Calculate your household's average daily energy consumption in kilowatt-hours (kWh). This helps estimate the solar panel capacity needed. Solar Panel Efficiency: Consider the efficiency of ...



Ultimate Guide to Solar Panel Sizes, Dimensions & How Many ...

What Are the Standard Solar Panel Sizes? When it comes to standard solar panel sizes, like 300w or 500w, it is essential to determine the size of a solar panel system ...

Solar Cable Sizing Guide How Solar PV Cables Work Calculating ...

Most solar panel systems include basic cables, but sometimes you have to purchase the cables independently. This guide will cover the basics of solar cables while ...



Solar Panel Sizes And Wattage , Sizing, Dimensions & Weight

Your daily energy consumption and the size of your solar system determine the number of solar panels required for your home: the more solar panels you require, the larger ...



[The Ultimate Guide to Solar Panel Output](#)

Output = [Solar Panel Size (in square meters) × 1000] × Solar Panel Efficiency (percentage as a decimal) × Number of peak sun hours per day.
Example . Suppose the solar ...



[Solar Panel Cost Calculator UK](#)

The calculator provides a performance estimate of a domestic solar photovoltaic system using the answers provided. operation from April 2022 to 2027 which means that vulnerable households will pay less to make ...

Solar panel sizes and wattages , The Independent

Common domestic solar panel wattages in the UK include 250W, 300W, 350W and 400W, but even higher wattages are available - and all the best solar panels are at least ...



Solar Cable Size Selection Guide For PV Plants

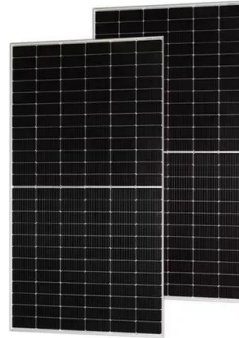
These cables are designed to transmit DC (direct current) solar energy in photovoltaic systems and serve as interconnects for solar panels and PV arrays within solar ...





[Free Solar Cable Size Calculator](#)

Estimated cable length 12.4m needed for connecting the solar array to the next solar power system unit for the example charge controller. We get calculated that we need a copper wire of ...



Installing a Photovoltaic System in Cyprus: Complete Guide

Comparison of different panel options. With so many different types of photovoltaic panels on the market, it can be overwhelming to choose the right one. Comparing the different panel options ...

Solar Power Calculator and Battery Design Estimator , Enphase

The solar panel and storage sizing calculator allows you to input information about your lifestyle to help you decide on your solar panel and solar storage (batteries) requirements.



How Many Solar Panels Does It Take To Charge a Tesla

The above map shows Global Horizontal Irradiance (GHI) and the projected electricity production per m² (square meter) of photovoltaic surface. The more sunlight your ...



How Efficient Are Solar Panels?

A 400W solar panel from another manufacturer with an 18% efficiency rating The surface area required for 4 x 400W solar panels with 18% efficiency would be approximately 12.5m² to panels are given an efficiency ...



The Solar Wire Size Calculator

Wires that are too small will cause significant voltage drops, and therefore a significant solar energy loss, as well as possible overheating that may cause a fire. You can use our Solar Wire Size Calculator to select the proper wire for ...

Photovoltaic (PV) Solar Panels

Under typical UK conditions, 1m² of PV panel will produce around 100kWh electricity per year, so it would take around 2.5 years to "pay back" the energy cost of the panel. PV panels have an ...



How Many Solar Panels Do I Need to Power My House?

How many photovoltaic modules are needed to power a house varies significantly with the size of the home, (square meter) of photovoltaic surface. (Source:



Solar Panel Wiring Basics: Complete Guide & Tips to Wire a PV ...

You should know that there are limitations for series solar panel wiring. In the U.S., solar strings are required to feature a maximum voltage of 600V, so solar arrays comply ...



Solar Panel Wire Size (Cable Gauge + Calculations Chart)

Table 1: Solar panel cable for amp chart for 90°C (194°F) Copper. Amperage tables exist for copper cables reflecting the current carrying capacity of the different gauge cables at different operating temperatures. ...

A Complete Guide on Solar Panel Calculations (2023 ...

How many kWh does a 400W solar panel produce? A 400W solar panel produces about 1.2 to 3 kWh per day, depending on sunlight conditions. For exact solar panel calculation for output, you may also need to ...



How do solar cells work? Photovoltaic cells explained

There are many photovoltaic cells within a single solar module, and the current created by all of the cells together adds up to enough electricity to help power your home. A ...



Contact Us

For catalog requests, pricing, or partnerships, please visit:
<https://vdbconstruction.co.za>