

How many watts are two square meters of photovoltaic panels





Overview

What is solar panel watts per square meter (W/M)?

Solar panel watts per square meter (W/m) measures the power output of a solar panel based on its size. Compare solar panels to see which generates most electricity per square meter. A higher W/m value means a solar panel produces more power from a given area. This can help you determine how many solar panels you need for your energy needs.

How many Watts Does a solar panel use per square foot?

Dividing the specified wattage by the square footage of the solar panel will give us just this result: The average solar panel output per area is 17.25 watts per square foot. Let's say that you have 500 square feet of roof available for solar panel installation. What is theoretically the biggest solar system you can put on that roof?

.

How much power does a 400 watt solar panel produce?

A 400 W solar panel can produce around 1.2-3 kWh or 1,200-3,000 Wh of direct current (DC). The power produced by solar panels can vary depending on the size and number of your solar panels, the efficiency of solar panels, and the climate in your area. How many solar panels are needed to run a house?

.

How much power does a small solar panel generate?

Although, please note that they will not generate as much power as standard-sized solar panels, but that goes without saying. In terms of power, small solar panels typically start at around 50 watts but can go all the way up to 150 watts. Recommended solar reading:.

What is the size of a solar panel?



The size of a solar panel is measured in watts, which indicates the amount of power it can generate. The most common solar panel sizes for residential installations are between 250W and 400W, while larger commercial installations may use panels up to 500W or more.

How many Watts Does A 72-cell Solar System produce?

The size of a 72-cell solar system is the same, just they have an extra row of cells. The average output from 72-cell solar panels ranges between 350 watts to 400 watts. They are used in commercial solar projects and large buildings.

3. Efficiency of Solar Panels This is an important indicator when using the solar power per square meter calculator.



How many watts are two square meters of photovoltaic panels



Solar Panel Sizes, Dimensions & Weight

Solar panels also come with 72 solar cells, which are larger to accommodate the additional cells. They are around 30% larger than residential solar panels, measuring ...

How much energy do solar panels produce for your home?

2. Solar panel output per month. For a monthly total, calculate the daily figure then multiply it by 30: $1.44 \times 30 = 43.2$ kWh per month; 3. Solar panel output per square metre. The most ...

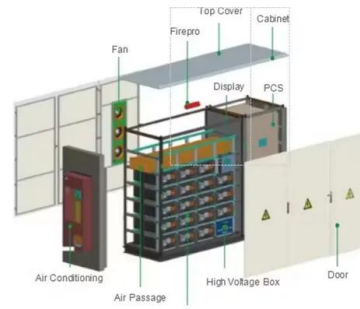


How much energy does a solar panel produce? Measuring solar ...

How much energy does a solar panel produce? As mentioned above, the two main factors that determine solar panel energy output are panel power and sunshine. In the UK, a typical solar ...

Solar Panels Sizes and Weights (All Sizes)

On average, a solar panel can provide 15 watts per square foot. Let's start by breaking down the average dimensions of different solar panels by size. Kilograms per ...



How much Space do I need for Solar Panels? UK Guide 2024

The 60-cell panels are about 65 by 39 inches and have a power output of around 280-320 watts, and the 72-cell panels are about 77 by 39 inches and have more power ...



Solar explained Photovoltaics and electricity

PV panels vary in size and in the amount of electricity they can produce. Electricity-generating capacity for PV panels increases with the number of cells in the panel or ...



[How Many Watts Does A Solar Panel Produce](#)

How Many Watts Does a Solar Panel Produce Per Day? The average output of a solar panel in kilowatts is given by; Step 1 = Size of one solar panel (in square meters) x ...





A Complete Guide on Solar Panel Calculations (2023 ...

Daily watt hours = Average hours of sunlight x solar panel watts x 75%. The following is an example: 1000 is the conversion factor that transforms power output per unit area from watts per square meter to percent. ...



Support any customization

Inkjet Color label LOGO

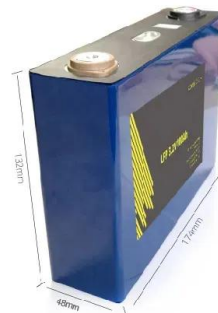


How to Calculate Solar Panel KWp (KWh Vs. KWp + Meanings)

1. Find the total solar panel area (A) in square meters by multiplying the number of panels with the area of each panel.
2. Determine the solar panel yield (r), which ...

Guide to Solar Panel Sizes & Dimensions (November 2024)

Some common solar panel system sizes include a 3kW solar panel system, a 4 kilowatt solar panel system and a 5kW solar panels. For instance, a typical 2kW solar panel ...



Solar Panel Dimensions Sizes and Wattage

Solar panel dimensions is an essential criterion to consider when planning a photovoltaic solar installation. So, how big is a solar panel? these panels offer greater ...



How Many Solar Panels Do I Need To Power a House?

A peak sun hour is when the intensity of sunlight (known as solar irradiance) averages 1,000 watts per square meter or 1 kW/m². This is called power rating and it's ...



Standard Solar Panel Sizes And Wattages (100W ...

How many watts per square foot can a solar panel generate? Dividing the specified wattage by the square footage of the solar panel will give us just this result: The average solar panel output per area is 17.25 watts per square foot. ...

How Much Power Do Solar Panels Produce Per Square Meter?

The average solar panel has an input rate of roughly 1000 Watts per square meter, while the majority of solar panels on the market have an input rate of around 15-20 percent. As a result, ...



Solar Rooftop Calculator: How Many Solar Panels Can

The smarter way to use the data about how many watts do solar panels produce per square foot. In fact, by averaging different wattages and dimensions of solar panels, we can see that an ...



Solar panel output: How much electricity do they ...

To calculate how much power a solar system will generate, multiply the solar panel wattage by the number of daylight hours, and then multiply that by the number of solar panels you have. For example, with 350W ...

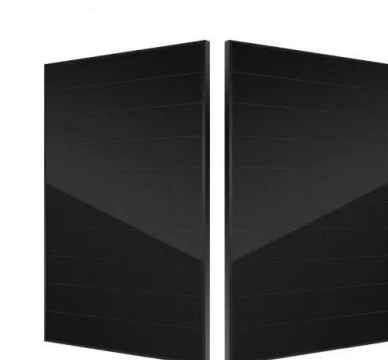


[Solar Power Per Square Meter Calculator](#)

"At Earth's average distance from the Sun (about 150 million kilometers), the average intensity of solar energy reaching the top of the atmosphere directly facing the Sun is ...

Solar panel output: How much electricity do they ...

A solar panel's output is expressed in watts (W). The higher the wattage of a solar panel, the more electricity it can produce. the more electricity it will produce per square metre. Here's what you can expect from different ...



[Solar Panel Watts Per Square Meter Explained](#)

How to Calculate Solar Panel Watts per Square Meter. Calculating watts per square meter (W/m) is simple: Calculate total watts generated: Multiply the power output of a single panel by the number of panels. Example: 20 panels x 300 ...



How Much Electricity Do Solar Panels Generate in Ireland?

One square meter of silicon solar panels can generate approximately 150 watts of power on a clear, sunny day. However, the actual electricity generation will be lower than this ...



[How Much Power \(Watts\) does a Solar Panel ...](#)

Size of one solar panel (in square meters) x 1,000; That figure x Efficiency of one solar panel (percentage as a decimal) 6 hours x 300 watts (an example wattage of a premium solar panel) = 1,800 watts-hours, or roughly 1.8 kilowatt ...



Solar Panel Sizes And Wattage , Sizing, Dimensions & Weight

The power generated by a solar panel is measured in watts (W), which correspond to the panel's optimum sunshine and temperature conditions. For much of the ...



[Solar Panel Watts Per Square Meter Explained](#)

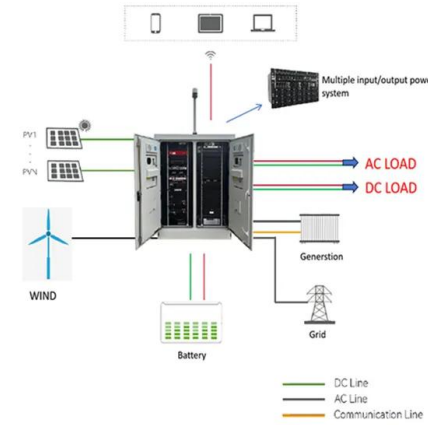
Solar panel watts per square meter (W/m) measures the power output of a solar panel based on its size. Compare solar panels to see which generates most electricity per square meter. A higher W/m value means a solar panel ...





Solar Panel Sizes & Dimensions UK (2024)

The majority of solar panels for sale in the UK average around 350 watts (W) in power for residential units. See also Solar Panels UK - Buying Guide. instead of the typical ...



Average Solar Panel Output Per Day: UK Guide

Here is the formula: solar panel watts x sun hours = Wh. How much energy does a solar panel produce per day? So, for a 16 panel system, with each panel measuring one square metre, each panel can generally ...

How Many Solar Panels Do I Need in the UK?

Most roofs can easily manage 10kg per square meter, while the average weight load of a solar panel on a slanted roof is about 1.3kg per square meter (2.3kg per m2 on a flat roof). While they can weigh up to 18kg to 20kg, ...



Contact Us

For catalog requests, pricing, or partnerships, please visit:
<https://vdbconstruction.co.za>