

How many watts is a set of photovoltaic panels





Overview

The typical solar panel in the UK is 350W, which can produce up to 1,128.75Wh of electricity per day - enough to cover almost a sixth of the average UK home's electricity needs by itself. How many watts is a solar panel?

The typical solar panel power rating varies between 40 and 480 watts. Lower-watt solar panels are commonly smaller and more portable. Although higher-wattage solar panels exist, such as Trina Solar's 600+ watt module, they are often too large for widespread use.

How much power does a solar panel produce?

(The most powerful solar panel we recommend, the JA Solar JAM72S30 Mono PERC Half-Cell MBB, has a power output of between 525W and 550W.) Understanding solar panel wattage is vital to picking a solar panel powerful enough to meet your home's electricity needs.

How many solar panels are in a 20 x 330 watt solar system?

The number of solar panels x output = Solar system size 20 x 330W panels = 6,600 W or 6.6kW solar system The number of solar panels multiplied by their output determines the size of the solar system. For example, if you have 20 solar panels with a wattage of 330W each, it results in a 6,600 W or 6.6kW solar system.

How much wattage does a solar PV system have?

The wattage of the solar panels, in this case, is crucial in determining the overall capacity of the system. Your system may consist of 20x330W panels, resulting in a 6,600W (6.6kW) solar PV system. A solar photovoltaic (PV) system's size or capacity is the maximum amount of electricity it can produce.

How much power does a 400 watt solar panel produce?



A 400 W solar panel can produce around 1.2-3 kWh or 1,200-3,000 Wh of direct current (DC). The power produced by solar panels can vary depending on the size and number of your solar panels, the efficiency of solar panels, and the climate in your area. How many solar panels are needed to run a house?

.

How do you calculate wattage of a solar panel?

It is usually measured in watts and calculated by multiplying the solar panel's voltage, amperage, and the number of cells. The typical solar panel power rating varies between 40 and 480 watts. Lower-watt solar panels are commonly smaller and more portable.



How many watts is a set of photovoltaic panels



150 watt Solar Panel: How Many Amps (Specifications, Power ...

A 12v 150 watt solar panel will produce about 18.3 volts and 8.2 amps under ideal sunlight conditions. (inc. 1kw/m² of sunlight intensity, no wind, and 25 o C temperature). ...

Solar Simplified: Easy-to-Understand Guide to Voltage, Amperage ...

For example, a solar panel with a voltage of 20V and an amperage of 5A has a wattage of 100W. This means the panel can produce 100 watts of power under optimal ...



[Average Solar Panel Output Per Day: UK Guide](#)

Each solar panel system is different -- different panels, different location, different size -- which means that calculating the "average" output per day depends on many factors. However, the majority of private-use solar ...

How Many Solar Panels Do I Need for A 30 Amp Controller?

Solar panel wattage: This tells you how much power each panel churns out under ideal conditions. Think of it as their individual muscle mass. the voltage will be 22.7 * ...



51.2V 150AH, 7.68KWH

[Solar Panel Output Calculator UK 2024](#)

If you're planning to cut your energy bills and help the climate by getting solar panels on your roof, you'll want to know exactly how much electricity they can produce and ...



Solar panel sizes and wattages , The Independent

Measured in watts, solar panel wattage refers to the maximum power output a solar panel can produce when exposed to sunlight. Under STC, the temperature is set at 25°C;



The Complete Off Grid Solar System Sizing Calculator

ACOPOWER 600 Watt Solar Panel Kit, 6x100W Solar Panels with LCD Charge Controller/Mounting Brackets/Y Connectors/Solar Cables/Cable Entry housing(600W MPPT50A Kit) Check Price RICH SOLAR 600 Watt 12 ...





Fitting a Solar Panel to your Campervan

As a general guide. On a sunny day, a 100W solar panel will produce approximately 4-5 amps per hour in full sun. This means that the solar panel would take around 18-25 hours to charge a ...



What can a 200 watt solar panel power? A complete ...

How many amps does a 200 watt solar panel produce? In terms of current, 12V-200W solar panels are usually rated at 8 to 10 Amps. The amperage of the solar panel is generally specified by the manufacturer under ...

How Many kWh Does A Solar Panel Produce Per Day? Calculator ...

Now you can just read the solar panel daily kWh production off this chart. Here are some examples of individual solar panels: A 300-watt solar panel will produce anywhere from 0.90 to ...



- IP65/IP55 OUTDOOR CABINET
- OUTDOOR CABINET WITH AIR CONDITIONER
- OUTDOOR ENERGY STORAGE CABINET
- 19 INCH



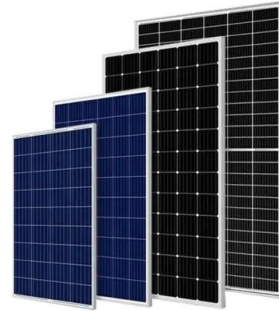
How Big and Expensive is a 15kW Solar System?

Here's an example of a 15kW solar system. The number of solar panels needed to create 15 kilowatts depends on the efficiency of the panels, though it typically hovers ...



200 Watt Solar Panel Guide , All You Need to Know

For instance, let us assume that the number of peak sun hours is 5; the electrical energy generated by the 200 watts solar panel would be 200 watts x 5 peak sun hours = 1000 Watt-hours. How Many AMP Hours Does A ...



Standard Solar Panel Sizes And Wattages (100W ...

A typical 400-watt solar panel is 79.1 inches long and 39.1 inches wide. It takes up 21.53 sq ft of area. If you have a 1000 sq ft roof, and you can use 75% of that roof area for solar panels, you can theoretically put 34 400-watt solar panels ...

[Solar Panel Ratings Explained](#)

For instance, the 100-watt solar panel from our example has a V_{mp} rating of 17.8 Volts, which means that under the STCs, this solar panel will measure 17.8 Volts across its terminals when it's producing 100 Watts of ...



How many solar panels do you need to power a UK home?

Already know how much electricity your home needs in Watts? According to the Renewable Energy Hub, domestic solar panel systems usually range in size from around ...



How much energy do solar panels produce for your home?

Most residential solar panels on today's market are rated to produce between 250 and 400 watts each per hour. Domestic solar panel systems typically have a capacity of between 1 kW and 4 ...

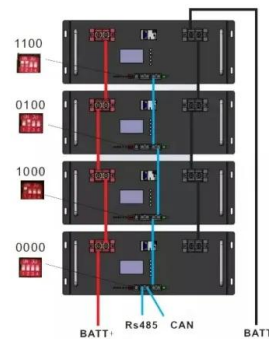


How to Test Solar Panels: Output, Amps & Watts

At this point in the day, the clouds had rolled in, so my watt meter measured an output of 24.4 watts from my 100 watt solar panel. As you can in the photo, you can also use a ...

How much electricity do solar panels produce? [UK, 2024]

The average temperature coefficient for a solar panel is -0.32%/°C, which means for every degree above 25°C, a solar panel's output falls by a miniscule 0.32%. ...



114KWh ESS



Calculating Solar PV String Size - A Step-By-Step ...

For example, if you have a solar panel that has a Voc (at STC) of 40V, and a Temperature Coefficient of 0.27%/°C. Then for every degree celsius drop in panel cell temperature, the voltage will rise by: $40V \times 0.27\% = 0.108V$. Or if your ...





600 Watt Solar Panels Technical Specs & Installation

A premium solar panel typically can cost between \$1 and \$1.50 per watt, amounting to \$600 and \$900 for a single 600-watt solar panel. Less efficient panels might be ...

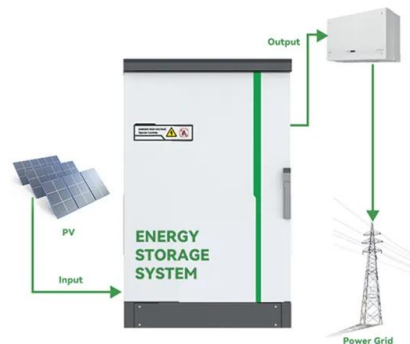


4kW solar panel systems , Costs & output [UK, 2024]

A 4kW solar panel system costs around £9,500 to buy and install. If you want to include a battery in the installation, this will add around £2,000 to the price, for an overall ...

Solar Panel Wattage and Output Explained , 2024

How much power does a 500-watt solar panel produce per day? Assuming favorable sunlight conditions, a 500-watt panel will produce around 2 kWh per day, and more ...



How Many Solar Panels Do I Need to Power My Home ...

For the calculations below, we use 400 watts as an average solar panel rating of the power solar panels produce. Production ratio: The ratio between the estimated energy ...



[Solar Panel Sizes & Dimensions UK \(2024\)](#)

The size of a solar panel is measured in watts, which indicates the amount of power it can generate. The most common solar panel sizes for residential installations are ...



The Ultimate Camper Van Solar Setup Guide (2023 Edition)

300-400+ watts fixed panels (rigid monocrystalline panels) 30-40 amp MPPT charge controller But you will be limited in how many panels you can put in your solar panel ...



Solar Panel Wiring Basics: Complete Guide & Tips to Wire a PV ...

Connect solar panel strings in parallel by using a connector known as MC4 T-Branch Connector 1 to 2, Really need more info 600 Watts of solar panels is quite small. ...



Solar Panel Sizes And Wattage , Sizing, Dimensions

Watt (W) and kilowatt (kW): a unit used to quantify the rate of energy transfer. One kilowatt = 1000 watts. Solar panels' rating in watts specifies the maximum power the solar panel can deliver at any time, providing insights ...





Solar Panel Sizes and Wattage Explained

Solar Panel Size. It focuses on maximum electricity generation and overall capacity rather than the quantity of panels. To calculate the required system size, multiply the number of panels by the output. For example, a 6.6 ...



Contact Us

For catalog requests, pricing, or partnerships, please visit:
<https://vdbconstruction.co.za>