

# How many wind levels does Fengli generator rotate

*LiFePO<sub>4</sub> Battery, safety*

*Wide temperature: -20~55°C*

*Modular design, easy to expand*

*The heating function is optional*

*Intelligent BMS*

*Cycle Life: ≥ 6000*

*Warranty: 10 years*





## Overview

---

How does a wind turbine rotate?

In a wind turbine, the rotation is achieved through the clean, natural, and ultimately unlimited power of the wind. To capture wind energy, the top part of the turbine is turned to face the wind, the three blades are set at exactly the right angle, and the movement of the air past them causes them to rotate.

How much electricity does an offshore wind turbine generate?

One rotation of an offshore wind turbine of the type installed for Ocean Wind 1 generates enough electricity to cover the power consumption of a typical home for about 20 hours. How reliable is wind energy?

Offshore wind power is more reliable than you might think.

How much power does a wind turbine generate?

One single wind turbine can generate a few megawatts (MW) of power. That's a lot compared to the power needed to light a home, for example. But it's still much less than the steam turbine in a conventional power station. That's why wind turbines are grouped together to form a wind farm.

What is the capacity factor of a wind farm?

The "capacity factor" of wind farms varies quite a bit, but 30–50 percent is a decent, working range. A blog called Energy Numbers suggests that typical UK offshore farms vary between about 33 percent and 50 percent for 2021.

Why are wind turbines grouped together to form a wind farm?

That's why wind turbines are grouped together to form a wind farm. This can be thought of as one big power station – but one that doesn't create any emissions when it generates electricity. An offshore wind farm is made up of many turbines spread out over a wide area of ocean.



How does a windmill work?

A turbine, like the ones in a wind farm, is a machine that spins around in a moving fluid (liquid or gas) and catches some of the energy passing by. All sorts of machines use turbines, from jet engines to hydroelectric power plants and from diesel railroad locomotives to windmills. Even a child's toy windmill is a simple form of turbine.



## How many wind levels does Fengli generator rotate

---



### How do offshore wind turbines work? , Ørsted

One rotation of an offshore wind turbine of the type installed for Ocean Wind 1 generates enough electricity to cover the power consumption of a typical home for about 20 hours. How reliable ...

### Yan-Feng Li's research works , Beijing University of Technology

Yan-Feng Li's 237 research works with 5,548 citations and 9,025 reads, including: Multi-Directional Displacement Threshold Energy and Crystal Irradiation Damage Model

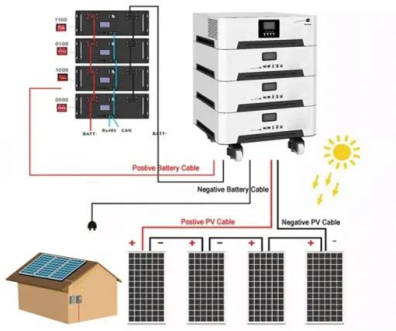
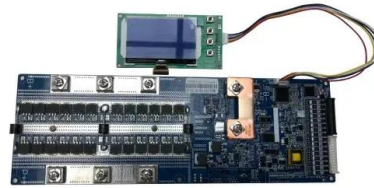


### [How Do Wind Turbines Maintain 60hz?](#)

To achieve high synchronous speed, gearless direct drive generators have a significant number of poles. Generators with fewer poles rotate at a faster rate, necessitating the use of a gearbox ...

### How does a wind turbine generate electricity? -- Energy

A wind turbine works by catching the energy in the wind, using it to turn the blades, and converting the energy to electricity through a generator in the part of the turbine called a ...



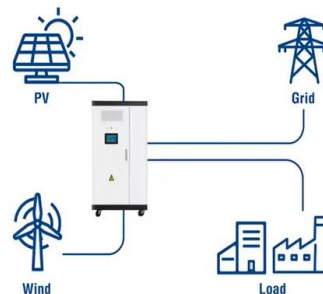
### How do offshore wind turbines work? , Ørsted

To capture wind energy, the top part of the turbine is turned to face the wind, the three blades are set at exactly the right angle, and the movement of the air past them causes them to rotate. ...

### How Fast Do Wind Turbines Spin?

The wind velocity has the biggest effect on the rotational speed of the rotor. After all, wind turbines are meant to rotate in response to the wind! Faster wind speeds mean faster rotation. The wind turbine begins to react, ...

### Utility-Scale ESS solutions



### How does a wind generator work? UKA



Wind speed: Wind speed is higher at great heights than at ground level (wind shear). For a wind turbine, this means that energy generation can, to a certain extent, be enhanced by taller towers. Rotor surface area: Rotor blades for ...



## Wind Turbine Calculator

Wind turbines convert the kinetic energy from the wind into electricity. Here is a step-by-step description of wind turbine energy generation: Wind flows through turbine blades, causing a lift force which leads to the rotation of the blades..  
...



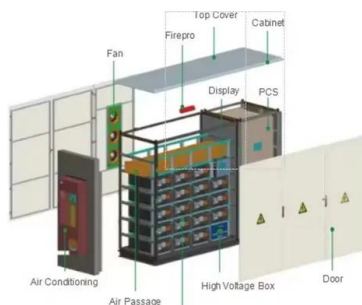
## How Fast do Wind Turbines Spin? - Wind Turbine ...

However, large wind turbines are at a slight disadvantage to larger wind turbines because the blades are heavier, which slows down the speed at which the turbine blades spin and rotate. This is one of the reasons that wind turbines don't ...



## [NFU Energy wind energy guide](#)

Wind turbines capture this kinetic energy with their blades, and rotate, turning it into mechanical energy, which spins a generator to generate electricity. Like any generator, a wind turbine can ...



## Miaoli Fengli (Taiwan)

Offshore wind farm; Developer: Fengli Offshore Wind Power Generation; Owner: Source: Localisation. Latitude: 24° 50' 23.9" Longitude: 120° 35' 59.9" Geodetic system: ...



## Fundamentals of Wind Turbines , Wind Systems Magazine

The rotation is transmitted through a gearbox to a generator, which converts it into electricity. The magnitudes of the lift and drag on the turbine blade are dependent on the ...



1075KWHH ESS



### General description of a wind turbine system The appropriate ...

A modern wind turbine is often equipped with a transformer stepping up the generator terminal voltage, usually a voltage below 1 kV (E.g. 575 or 690 V), to a medium voltage around 20-30 ...

### How many more wind turbines will the UK build?

The government says it wants to generate enough wind energy to be able to power every home in the UK by 2030. Its energy strategy promises a major expansion of ...



### Wind Turbine Generators , How it works, Application & Advantages

How Wind Turbine Generators Work. The fundamental principle behind wind turbine generators is relatively simple and consists of four primary steps. First, when the wind ...





## How Fast Does a Wind Turbine Spin? (And Why it ...)

Measuring a Wind Turbine's Speed. When considering the question of how fast do wind turbines spin, it is important to note that there are two ways in which the rotation speed can be measured.. RPM (revolutions per ...



### [\(PDF\) How Can Wind Turn Into Electricity?](#)

A wind turbine consists of several metal blades mounted on a metal pole and connected to an electrical generator. The wind rotates the blades, which turn a gear shaft ...



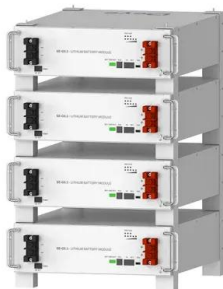
## Should wind turbines rotate in the opposite direction?

The intentional yaw misalignment of leading, upwind turbines in a wind farm, termed wake steering, has demonstrated potential as a collective control approach for wind ...



## The Science Behind Wind Blades and How They Work

How Wind Blades Work. Wind turbine blades transform the wind's kinetic energy into rotational energy, which is then used to produce power. The fundamental mechanics of wind turbines is straightforward: as the wind ...



Deye Official Store

10 years warranty



### How Much Power Does A Wind Turbine Generate?

When air blows through them, they cause the rotor to turn a shaft that powers an electrical generator. Most turbines automatically shut down when wind speeds reach about ...

Energy storage(KWH)  
**102.4kWh**  
Nominal voltage(Vdc)  
**512V**  
Outdoor All-in-one ESS cabinet



### **How Many Homes Can Be Powered by a Wind Turbine?**

The US would need about 37,000 wind turbines to cover its residential sector. Europe would need just over 18,000 turbines to power its households. And that's not even ...

### Feng Li Offshore wind farm

Feng Li Offshore wind farm (??, ??????????????, ???1800MW(?)) is a cancelled wind farm in Miaoli County, Taiwan. Project Details Table 1: Phase-level project ...



### **How Fast Do Wind Turbines Spin? (20 RPM, on average)**

1. Wind speed Chart relation of wind speed to rpm by Esmar Budi. Wind speed is one of the most significant factors determining how fast a wind turbine will spin. Higher ...





## Contact Us

---

For catalog requests, pricing, or partnerships, please visit:  
<https://vdbconstruction.co.za>