

How much does a 278-watt photovoltaic panel weigh





Overview

These panels cover an area of 17.62 square feet and weigh around 40 pounds, excluding the weight of frames and mounting equipment. How much does a solar panel weigh?

Solar panels usually weigh about 40 to 50 pounds. Commercial solar panels are generally larger than residential solar panels at 6.5 feet by 3 feet. Installing high-efficiency solar panels can reduce the number of panels you need, which lightens the total load on your roof. How big is a solar panel?

.

How much does A 72-cell solar panel weigh?

72-cell solar panels weigh around 61.73 pounds. As you may recall, these larger panels usually provide 350 to 400 watts. The weight of a solar panel per unit is an important consideration when deciding which size is best for your home, which we will discuss further in a later section.

How much does a 60 cell solar panel weigh?

Every brand of solar panels has slight variations in their dimensions and weights, according to manufacturing material. Although the weight of different brands of solar panels varies, an average 60 cell solar panel weighs about 40 pounds. Other important factors are wattage and voltage/current requirements.

How many Watts Does a solar panel power?

The wattages of solar panels can range greatly. While some solar panels power select appliances or RVs, others are powerhouses, and others can power industrial buildings. These solar panels differ in both size and weight. On average, a solar panel can provide 15 watts per square foot.

What is a solar panel size?



When speaking about a solar panel's size, people can often become confused. Solar panel size can refer to the power it produces (measured in watts) and its physical dimensions. Nevertheless, the typical size of a residential solar panel in the UK is 250W to 450W.

Do solar panels have a higher wattage?

A solar panel's physical size tends to strongly correlate with its wattage. As a general rule, larger solar panels have higher power output than smaller ones. This is because larger solar panels have more surface area, meaning they can accommodate more solar cells.



How much does a 278-watt photovoltaic panel weigh



Solar Panel Dimensions & Weight in Australia: The Ultimate Guide

It is important to consider the dimensions and weight of your desired solar panel system to ensure it will fit on your roof. These details are an important consideration for ...

How Many kWh Does A Solar Panel Produce Per Day? Calculator ...

Now you can just read the solar panel daily kWh production off this chart. Here are some examples of individual solar panels: A 300-watt solar panel will produce anywhere from 0.90 to ...



Solar Panel kWh Calculator: kWh Production Per Day, ...

In a 5.50 peak sun hour area, a 300-watt solar panel will produce 1.24 kWh per day, 37.13 kWh per month, and 451.69 kWh per year. Example: What Is The Output Of a 100-Watt Solar Panel? Let's look at a small 100-watt solar panel. ...



Solar Panel Size & Weight: A Comprehensive Guide

How much does a 300 watt solar panel weigh? They generally consist of 60 or 72 solar cells (or 120-144 half-cut solar cells) and can produce 300 to 400 watts of power. In general, residential solar panels can weigh as low as 35 lbs (kg) and



...



[How Much Do Solar Panels Weigh?](#)

How Much Does a 400-Watt Solar Panel Weigh?
The weight of a solar panel varies by manufacturer, material, and construction. An EcoFlow 400W rigid solar panel weighs 21.8kg, whereas a 400W portable solar panel ...

How Much Does a Solar Panel Weigh? - Solar Panel ...

How much does a solar panel weigh? If you're using a regular panel for homes, expect it to weigh approximately 40 lbs. However, depending on the solar panel manufacturer, the weight of solar panels can vary between 33 ...



Guide to Solar Panel Sizes & Dimensions (November 2024)

The standard solar panel weight in the UK is 18 - 21kg for residential settings and 22 - 30kg for commercial settings. These include the weights of the frames and mounting ...



How Much Does an Average Solar Panel Weigh?

For a 6 KW solar panel installation consisting of 20 panels, the weight of just the panels will be close to 800 pounds. Here we are basing our calculations on an average thin-film panel ...



How much do solar panels weigh?

Most of the solar panels available on the market, consisting of 60 cells per panel, weigh about 40 pounds (18 kilograms). However, some solar panels can weigh up to 50 pounds (22.6 kilograms), but these are usually ...

Top 7 Best 400-Watt Solar Panels in 2024 (Cost, Specs & More)

Any more than that and the panel weakens under its own weight. This makes the power rating so important, because all manufacturers have to maximize the power output ...



LPSB48V400H
48V or 51.2V



Solar Panel Watts Per Square Foot: 'We (Finally) Did The Math'

Check the standard solar panel size (area) and the output wattage of the whole panel. Divide the solar panel wattage (for 100W, 150W, 170W, 200W, 220W, 300W, 350W, 400W, 500W) by ...





Solar Panel Weight

Understanding how much does a solar panel weigh is crucial for various reasons, from installation to structural considerations. In this comprehensive guide, we'll delve into the world of solar ...



[Solar Panel Sizes & Dimensions UK \(2024\)](#)

The size of a solar panel is measured in watts, which indicates the amount of power it can generate. The most common solar panel sizes for residential installations are between 250W and 400W, while larger commercial ...

Solar Panel Size & Weight: The Ultimate Guide 2024

To determine the size of your solar system, you can use a solar power calculation formula based on the typical output of solar panels, usually ranging from 250 watts ...



[Are 500-watt solar panels the best option?](#)

A 500-watt solar panel will produce 2 kilowatt-hours (kWh) of daily power in typical conditions. They have an efficiency rating of around 21%. In terms of weight, 500 W panels weigh ...



Renogy 16BB N-Type 250 Watt Bifacial Solar Panel

Renogy 250W 12V N-Type TOPCon Solar Panel offers 25% efficiency, 30% more energy, IP68 rating, easy installation, and a 10-year warranty. Decrease Quantity of Renogy 16BB N ...



400-watt Solar Panels Explained: Everything You Need ...

Most 400-watt panels measure around 6.5 feet by 3.3 feet and weigh approximately 50 pounds. This makes them manageable for installation on various surfaces, from rooftops to ground-mounted arrays. How Much Does ...

150 watt Solar Panel: How Many Amps (Specifications, Power ...

A 12v 150 watt solar panel will produce about 18.3 volts and 8.2 amps under ideal sunlight conditions. (inc. 1kw/m² of sunlight intensity, no wind, and 25 o C temperature). ...



[How much does the average solar panel weigh](#)

On average, polycrystalline panels weigh between 42-45 pounds each. Thin-film models are the lightest, but their efficiency is also much lower. A 36-cell 100-watt thin-film panel can weigh ...



How Much Does A Solar Panel Weight?

How Much Does A Solar Panel Weight? Solar panels have become a popular choice for generating clean energy. However, one question that often arises is how much do solar panels ...

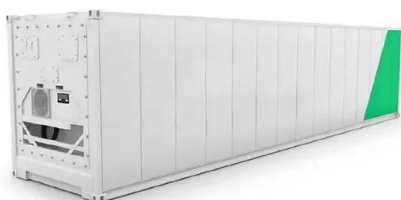


Solar panel sizes and wattages , The Independent

Measured in watts, solar panel wattage refers to the maximum power output a solar panel can produce when exposed to sunlight. (such as 72-cell panels) can weigh as ...

How Much Do Solar Panels Weigh?

Solar Panels Weigh 2 to 4lbs Per Square Foot. Solar panel weights vary by manufacturer, mounting system, and other factors. Generally, however, an average solar panel, including ...



How Much Do Solar Panels Weigh? 1.30 - 2,608.7 lbs ...

If we know that 1 square foot of a solar panel weight 2.25 lbs and has a rated wattage of 17.25 watts, we can calculate the how much any solar panel (100W, 200W, 300W, 400W, 500W) and any solar system (3kW, 5kW, 10kW, 20kW, ...



How Much Does a Solar Panel Weigh?

Photovoltaic Panels (Thin-Film) The most common type of solar panel used in residential settings is that of the photovoltaic panel or thin-film panel. On average, photovoltaic panels weigh ...



How Much Do Solar Panels Weigh? (Chart)

How big is a 400-watt panel? A panel size depends on its material, efficiency, and brand. But a 400W panel can be 75" x 45" on average. LG's 400W panels are 80" x 40". SunPower's 400W panels are 66" x 39". How ...



How big are solar panels? Solar panel size and weight

We'll help you understand solar panel size, solar panel weight, and whether your roof can support your panels. Open navigation menu The total system size is also ...



How Much Do Solar Panels Weigh?

How Much Does a 400-Watt Solar Panel Weigh? The weight of a solar panel varies by manufacturer, material, and construction. An EcoFlow 400W rigid solar panel weighs 48.1 pounds, whereas a 400W portable solar ...





Contact Us

For catalog requests, pricing, or partnerships, please visit:
<https://vdbconstruction.co.za>