

How much does a photovoltaic panel weigh in square meters





Overview

The wattages of solar panels can range greatly. While some solar panels power select appliances or RVs, others are powerhouses, and others can power industrial buildings. These solar panels differ in both size and weight. On average, a solar panel can provide 15 watts per square foot. Let's start by breaking down the.

Here are some quick facts about the average weight of solar panels with differing wattages: 1. 100-watt solar panels from 5 of the most.

The roofs of current homes can safely support about 20 pounds per square foot. Including the mounting equipment, residential solar panels weigh about 3 to 4 pounds per square foot. Even after a snowstorm, your roof is.

They will weigh 13.12 kilograms per square meter. 200-watt solar panels that are 10.56 kilograms and measure 1.64 meters long by 0.99 meters wide have an area of 1.63 square meters. How much does a solar panel weigh?

Solar panels usually weigh about 40 to 50 pounds. Commercial solar panels are generally larger than residential solar panels at 6.5 feet by 3 feet. Installing high-efficiency solar panels can reduce the number of panels you need, which lightens the total load on your roof. How big is a solar panel?

How big are solar panels?

Residential solar panels consist of around 60 solar cells and are roughly 5.5 feet long and 3 feet wide. Solar panels usually weigh about 40 to 50 pounds. Commercial solar panels are generally larger than residential solar panels at 6.5 feet by 3 feet.

How much does A 72-cell solar panel weigh?

72-cell solar panels weigh around 61.73 pounds. As you may recall, these larger panels usually provide 350 to 400 watts. The weight of a solar panel per unit is an important consideration when deciding which size is best for your home, which we will discuss further in a later section.



How much does a 60 cell solar panel weigh?

Every brand of solar panels has slight variations in their dimensions and weights, according to manufacturing material. Although the weight of different brands of solar panels varies, an average 60 cell solar panel weighs about 40 pounds. Other important factors are wattage and voltage/current requirements.

How much does an RV solar panel weigh?

RV solar panels are generally rated at 100-150 watts and are smaller and lighter than residential solar panels. In general, the average rigid solar panel used in RV solar systems is rated at 100 Watts and weighs about 15lbs.

How many Watts Does a solar panel power?

The wattages of solar panels can range greatly. While some solar panels power select appliances or RVs, others are powerhouses, and others can power industrial buildings. These solar panels differ in both size and weight. On average, a solar panel can provide 15 watts per square foot.



How much does a photovoltaic panel weigh in square meters



Solar Panel Sizes, Dimensions & Weight

Typically solar cell sizes have been 156mm x 156mm, however, they have been increasing over the last 3-4 years which has been leading to larger dimension solar panels. ...

How Much Do Solar Panels Weigh?

The Weight of Solar Panels per M2 . Different manufacturers create solar panels of different weights. On average, solar panels weigh between 5 and 10kg per square meter. For a sound roof, this weight won't threaten the ...

TAX FREE

ENERGY STORAGE SYSTEM

Product Model
HJ-ESS-215A(100KW/215KWh)
HJ-ESS-115A(50KW/115KWh)

Dimensions
1600*1280*2200mm
1600*1200*2000mm

Rated Battery Capacity
215KWH/115KWH

Battery Cooling Method
Air Cooled/Liquid Cooled

FLEXIBLE SETTING OF MULTIPLE WORKING MODES



How Much Does a Solar Panel Weigh? - Solar Panel Facts

How much does a solar panel weigh? If you're using a regular panel for homes, expect it to weigh approximately 40 lbs. However, depending on the solar panel manufacturer, ...

How Much Do Solar Panels Weigh? 1.30

Now you can just read the estimated average solar panel weight from this chart. Here are some examples: On average, a 100-watt solar panel weighs 13.0 lbs.; On average, a 300-watt solar ...



How Much Does a Solar Panel Weigh? Solar Panel Size, ...

If we divide this weight by the total area of the system (32.7 square meters) it gives a weight of approximately 11 kilograms per square meter (2.3 lbs/sq.ft.). Adding the ...



How Much Does a Solar Panel Weigh? Solar Panel Size, ...

This means that the weight per square foot of a typical solar panel is around 2.3 pounds (10.80 kg/sq.m.). The smaller size of residential solar panels makes them ideal for residential rooftop installations. Read our article ...



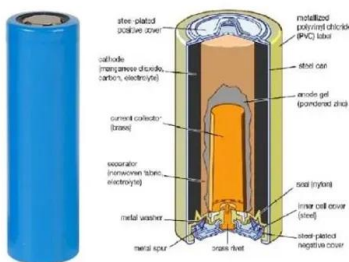
[How Much Do Solar Panels Weigh?](#)

Why Do Solar Panels Weigh So Much? Solar panels are relatively light. However, the entire solar panel array includes aluminum framing and other parts, and these parts tend to be heavy. ...



How big are solar panels? Solar panel size and weight

Solar panels generate clean energy and significant savings, but they aren't a one-size-fits-all solution. The size and weight of solar panels vary depending on the make and model, with most residential panels measuring ...



How Much Does an Average Solar Panel Weigh?

The average weight of a photovoltaic panel is about 40 pounds per panel. However, different manufacturers have different practices, leading to variations in weight. You can expect a ...

Detailed analysis of solar panel weight and calculation

How much does a solar panel weigh. such as thin film solar panels (like thin film solar cell), which are much lighter. Secondly, the solar panel weights is also related to ...



Solar Panel Size Guide: How Big Are Solar Panels and ...

At 17.5 square feet per solar panel you will be looking at around 437 square feet, or 40.5 square meters of solar panels on you roof, weighing around 1000 pounds. Now, the average size of your roof most likely sits ...



How Big Are Solar Panels? Understanding Solar Panel Size and Weight ...

Panel Weight: Solar panels vary in weight based on their size, type, and technology. Typically, a standard 60-cell solar panel weighs around 40 pounds (18-23 ...



Guide to Solar Panel Sizes & Dimensions (November 2024)

Solar cell dimensions are typically around 189 x 100 x 3.99cm (6.2 x 3.28 x 0.13 feet), while solar panel dimensions are usually between 1.6m² to 2m² (17.22 to 21.53 ...

Solar Panel Weight Guide: Everything You Should Know

The solar shingles used to make these solar roofs weigh less than solar panels, at about thirteen pounds per square foot (sixty-three kilograms per square meter) and while that seems heavy, ...



How Much Does a Solar Panel Weigh? [All You Need ...

So how much does a solar panel weigh? A solar panel typically weighs between 30 and 40 pounds, depending on the size and type of solar panel. The most common type of solar panel is the crystalline silicon solar cell, ...



Solar Panel Dimensions & Weight in Australia: The Ultimate Guide

Solar cell panels are categorised into two main sizes: SOLAR PANEL : CONFIGURATION: SIZE : 60 - Cell System : 6 x 10 : 99 x 167.6 cm : 72 - Cell System : 6 x ...



How Much Power Do Solar Panels Produce Per Square Meter?

How much energy does a solar panel create per square meter? The average solar panel has an input rate of roughly 1000 Watts per square meter, while the majority of solar panels on the ...

Solar Panel Weight

How Much Does a Solar Panel Weigh? but it typically ranges from 2 to 4 pounds per square foot of solar panels (10 to 20 kilograms per square meter). Inverters: Because of a number ...



How much Space do I need for Solar Panels? UK Guide 2024

Given these values, we can calculate the estimated electricity generation per square foot of solar panels in the UK: Estimated electricity generation (kWh/square foot/year) ...



How much do solar panels weigh? A complete guide ...

Weight of different residential solar panels. In terms of weight per area, the average weight/area of a residential solar panel is around 2.25 pounds per square foot (24.3lbs/m² or 11Kg/m²).. Please note that the overall ...

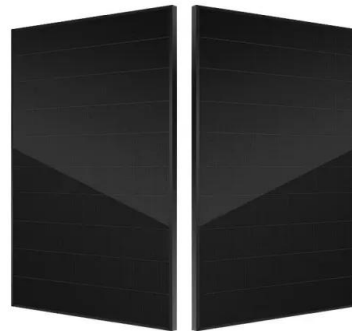


Solar Panel Size And Weight: A Comprehensive Guide

Solar panels come in different sizes and weights, and various factors can impact their dimensions, including total wattage required, solar cell type and solar panel material.

[Solar Panel Weight - WGSi Solar](#)

How much do solar panels weigh? Each panel weighs around 42 pounds (19 kg), though this may vary from brand to brand, but is usually about the same for most solar panels used in home ...



Solar Panel Size & Weight: The Ultimate Guide 2024

The 60-cell and 72-cell panels are standard for residential and commercial installations due to their practicality. 96-cell panels, though offering more power, can be ...



Contact Us

For catalog requests, pricing, or partnerships, please visit:
<https://vdbconstruction.co.za>