

# **How to construct the photovoltaic support foundation**





## Overview

---

How is a ground mounted PV solar panel Foundation designed?

This case study focuses on the design of a ground mounted PV solar panel foundation using the engineering software program spMats. The selected solar panel is known as Top-of-Pole Mount (TPM), where it is designed to install quickly and provide a secure mounting structure for PV modules on a single pole.

How do I choose a foundation for a solar project?

Understanding a potential solar project's ground conditions can influence many design considerations, most importantly what foundation to choose. The most economical foundation design can depend on geographical location, soil type, local building code requirements, groundwater levels, corrosion potential and topography.

What types of foundations are used for solar panels?

Different foundations are used based on the site's soil conditions, local regulations, and project scale. Concrete Ballast: Concrete blocks or pads are strategically placed on the ground to provide weight and stability to the solar array. This non-penetrating foundation is often used when soil penetration is restricted or prohibited.

What makes a ground-mount Foundation the right fit for a solar project?

Soil composition, local climate conditions, module size, array tilt and other features of the proposed site and array influence what makes a ground-mount foundation the right fit for an individual solar project. "Arrays may be mounted on driven beams, anchor systems, ballasts or hybrid racking systems," said Bill Taylor, CEO of DCE Solar.

Can a concrete foundation be used for a solar array?

Concrete foundations. Repurposed brownfield sites, capped landfills, and



designated wetland sites are ideal for ground-mounted solar arrays, but they require foundation designs to be minimally invasive. These kinds of sites can use concrete foundation racking systems that do not disturb the ground underneath.

How do you design a solar PV structure?

ALL Solar PV Structures are to be designed based on a rational design methodology that follows well-established principles of mechanics and be evidence-based. "Relying on a Factor of Safety (FS) is not reliable." Davisson and Robinson. Bending and Buckling of Partially Embedded Piles.



## How to construct the photovoltaic support foundation

---



### How to Design a Solar Pump System: A Step-by-Step ...

Mounting: Securely mount the PV combiner box close to the solar panels.. Connections: Connect the positive and negative terminals of the solar panels to the corresponding inputs in the combiner box.. Safety Devices: ...

### How to install photovoltaic support in frozen soil area?

The uneven frost heave and uplift of the photovoltaic support foundation is the focus and difficulty of the development and construction of photovoltaic projects in frozen soil ...



### Lithium battery parameters

Product capacity: 100Ah

Product size: 135\*197\*35mm

Product weight: 1.82kg

Product voltage: 3.2V

internal resistance: within 0.5

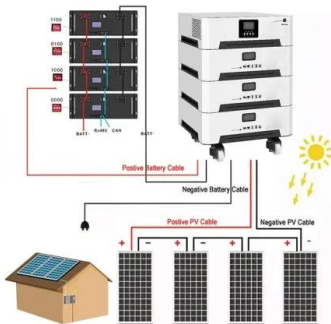


### Best Practice: Solar Roof Mounting System Design and Construction

The design of solar roof mounting systems is a critical phase that sets the foundation for the success and longevity of a solar installation. Snow Loads: In colder ...

### Flat Roof Ballasted Systems Design and Construction

The design and construction of flat roof ballasted systems require a nuanced understanding of various factors, including structural integrity, environmental conditions, and ...



### Navigating the foundation: risk vs. reward - pv magazine USA

Ensuring smooth sailing in a high-refusal environment. Refusals on a project can swing both ways. But defining a standard approach to each site using a scenario with a 50% ...

### Soil Improvement: Methods to Enhance Soft Ground Conditions

View the complete article here. When designing and constructing a superstructure's foundation, the enhancement of soft ground conditions can often eliminate the ...



### Selecting the right foundation for ground-mounted PV panels

Selecting the right foundation for a ground-mounted solar PV installation is critical for its success as the use of an incorrect foundation can result in premature refusal, ...





## How To Build A Photovoltaic Solar Panel [9 Easy Steps]

PRO TIP: For an in-depth support discussion of what solar PV is, visit this article. Step 1. Gather the Materials Needed for Your Photovoltaic Solar Panel The cheapest way to make a DIY ...



### [Solar Pile and Foundation Design](#)

Their design allows for easy installation, alignment, and support, which is crucial for maximizing solar energy capture in utility-scale projects. Pile design ensures that the pile structures align ...

## Your Guide To Solar Photovoltaic Support System In 2021

Concrete support is mainly used in large-scale photovoltaic power stations, because of its self-weight, it can only be placed in the field, and the area with a good ...



### **Ground Preparation and Foundation for Solar Panel ...**

A robust and stable foundation is essential for ground-mounted solar arrays' reliable and long-term operation. Different foundations are used based on the site's soil conditions, local regulations, and project scale.





### Understanding How Solar Cells Work: The Photovoltaic Principle

Fenice Energy uses its 20-year experience to make solar panels for India's solar needs. They focus on PV cell structure details to cut down major indirect costs of solar power. ...



### ESS



### Professional Solar Mounting Systems Ground Mount Systems

make up the FS System, geological testing of the soil to determine the necessary post embedment depth is required. Based on the testing results, the appropriate post length and ...

### Photovoltaic ground bracket installation options

The installation selection of photovoltaic ground brackets is mainly based on factors such as the fixing method of the bracket, terrain requirements, material selection, and the weather ...



### [Solar plant design guide: the basics](#)

Utility and community scale. Solar plants can also be utility and community scale: 1. Community-scale solar plants, also known as community solar gardens or shared solar projects, are solar energy installations ...



### 8 types of foundations commonly used in photovoltaic brackets

Ground photovoltaic support foundation . Bored pile foundation: Hole formation is more convenient, the top elevation of the foundation can be adjusted according to the ...



????????????????????

The quality of the support foundation construction was directly related to the installation of photovoltaic support, the ease of installation of photovoltaic modules, and whether the ...



### Solar mounting structure construction methods -- ...

The success of a PV installation relies on solar panel mounting systems. Here we discuss the four-step approach to selecting the right mounting structure for your PV project. Pole mounting installs steel poles with ...



### Research and Design of Fixed Photovoltaic Support Structure Based on

and 5 columns fixed photovoltaic support, the typical permanent load of the PV support is 4679.4 N, the wind load being 1.05 kN/m<sup>2</sup>, the snow load being 0.89 kN/m<sup>2</sup> and the seismic load is ...





6

In addition, large-scale solar power construction most often involves a considerable amount of solar platform preparation, PV support foundation work, logistics, and environmental engineering tasks. All of these are significant cost ...



**Solar mounting structure construction methods -- ...**

The success of a PV installation relies on solar panel mounting systems. Here we discuss the four-step approach to selecting the right mounting structure for your PV project.

**Build Your Own Solar Panel: A Step-by-Step DIY Guide**

This section provides a detailed list of items required, ensuring you have everything needed to successfully construct your solar panel. Solar Cells: The Heart of Your ...



**Guidebook for Solar PV projects in the Philippines**

This Guidebook addresses project developers and investors in the field of on-grid solar photovoltaic (SPV) projects in the Philippines. It intends to provide them with a clear overview ...



[12. Foundations , DIY Blog](#)

Build up all the corners first, making sure that each brick course is level and the walls are plumb. The top of all corners should be level with each other. After you have built the corners, build ...



[Off Grid Solar: A Beginner's Complete Guide](#)

A proper solar support structure can be built in many ways, depending on the materials you have on hand, and the skills you possess. I recommend, at the least, building a south facing A-frame ...



[Solar Carport Structures Comprehensive Guide](#)

These materials must support the weight of solar panels and withstand weather conditions, emphasizing the importance of quality in construction practices. Solar panel ...



**There are solar ground-mount solutions for any type of soil**

Installers make up that money by installing more beams, which is why a pile-based solar installation doesn't make sense on small projects. I-beams come with a higher ...



## Contact Us

---

For catalog requests, pricing, or partnerships, please visit:  
<https://vdbconstruction.co.za>