

# How to cut power to adt alarm system





## Overview

---

Find and open the alarm's security panel box. This is separate from the keypad. Inside the panel box, you'll find a battery attached by two leads. Disconnect these leads and remove the battery. Once you do this, the alarm should shut off. Can ADT batteries be charged through the mains power?

More advanced alarms, such as ADT systems, are able to charge their own backup batteries through the mains power when restored. However, if issues persist, we'll check for faults through our remote service, and will service your alarm system at a time that suits you.

How do I know if my ADT alarm is working?

The alarm system will give indication of a mains power failure by beeping shortly after the mains outage occurs. You should be able to shut off the noise with a code or another instruction. With an ADT alarm, the beeping will sound from the control system, and you can simply enter your keypad code to dismiss the alert.

How do I Stop my ADT alarm from shutting down?

With older alarms, you may simply be able to cut off mains power and remove the backup battery to shut the system down completely in the meantime. ADT customers have access to 24/7/365 all-inclusive support as standard, meaning we're always on hand to help.

How loud is an ADT security alarm?

A typical ADT security alarm system is between 100 and 115 decibels — which is pretty loud. And to make matters worse, now you're standing next to your blaring alarm and can't turn it off because you don't remember the code. Now what?

Locate and remove the transformer plug from the outlet. Disassemble the security panel. Remove the backup battery.



Does ADT have a backup battery?

Most common alarm systems, including ADT models, feature built-in backup batteries, specifically to keep your security system up and running in the event of a power cut. You won't have to do anything for your alarm to start using power from the backup battery, it will switch to batteries automatically when mains power is out.

How do I Stop my ADT alarm from beeping?

You should be able to shut off the noise with a code or another instruction. With an ADT alarm, the beeping will sound from the control system, and you can simply enter your keypad code to dismiss the alert. More advanced alarms, such as ADT systems, are able to charge their own backup batteries through the mains power when restored.



## How to cut power to adt alarm system

**Outdoor Cabinet BESS**  
50 kWh/500 kWh Battery Storage System  
Industrial and Commercial Energy Storage

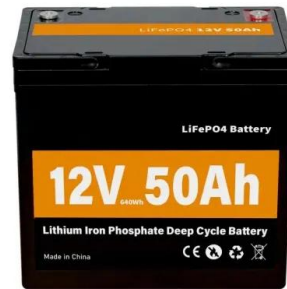
- All in One**  
Integrating battery packs
- High-capacity**  
50-500kWh
- Degree of Protection**  
IP54
- Operating Temperature Range**  
-20-60°C(Derating above 50 °C)
- Intelligent Integration**  
Integrated photovoltaic storage cabinet
- Rated AC Power**  
50-100kW
- Altitude**  
3000m(>3000m derating)

### How to turn off power / decommission a burglar alarm

The bell will usually ring for 20 minutes and then stop. At this point your alarm is decommissioned. If you want a professional engineer to fix your alarm system, get in touch with the SmartSecurity team. Watch how to video If you want to turn off / decommission

### How to Turn Off ADT Alarm System Without a Code

Cut power to the alarm system from your circuit breaker. Remove the transformer and battery from your alarm system. Take down the control panel, sensors, and cameras .



### How to Remove ADT Alarm System from Wall (Step-by-Step)

And fortunately, disabling an ADT alarm system doesn't require hard-to-find gear! Here's what you need: Phillips Head screwdriver Flathead screwdriver Blow dryer (for sensors) Acetone (for sensors) Removing ADT Base Unit From Wall The ADT base unit is the

### Video Tutorials

What is a monitored alarm and are the benefits worth it? The very first Monitored alarm system was established in the US in 1866 by the president of the Gold and Stock Telegraph Company after he was disturbed in his home by a burglar. The idea then - as



### Security During A Power Cut

Most common alarm systems, including ADT models, feature built-in backup batteries, specifically to keep your security system up and running in the event of a power cut. You won't have to do anything for your alarm to start using power from the backup battery, it will switch to batteries automatically when mains power is out.



### **How to Silence Low Battery Alerts on ADT Systems**

For many of our most popular systems, beeping alarms and low battery trouble beeps can be silenced by pressing the [OFF] or [#] buttons from the keypad. If this does not ...



### **How can I stop all power to my burglar alarm?**

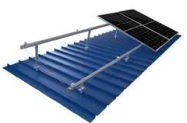
When mains power is cut to an alarm, most alarms sound powered by their own internal rechargeable batteries. This is a security feature to prevent burglars simply cutting power to an alarm to stop it. Of course, the alarm can't tell the reason for the mains supply



TILE ROOF SOLAR MOUNTING SYATEM



STANDING SEAM ROOF SYATEM



ADJUSTABLE TILT FLAT ROOF SYATEM



TRIANGLE FLAT ROOF SYATEM



### Do Security Systems Work In Power Outages?

Security systems that connect to a landline have one edge over home security systems without a landline: They won't go offline when the power goes out. Your traditional ADT system will keep running until its batteries run out of juice, assuming the extreme weather didn't take down the phone lines too.



### **How to reset ADT Honeywell Galaxy , Smart Security Guide**

Instructions on how to reset your Honeywell Galaxy alarm system, including Galaxy alarm Engineer reset, Manager reset and user reset. Includes all alarms. Guide to resetting your Galaxy alarm If your ADT Honeywell Galaxy system (or any Galaxy alarm system) has been activated, whether due to a real break-in or a false alarm, there are various methods for resetting it, ...

### **How to Bypass Commercial Alarm Systems , 9 Easy ...**

If the alarm system is connected to a power source, cutting it off can be an effective way to disable it. In most cases, this means unplugging the device or turning off the breaker. Doing so will prevent the alarm from detecting ...



### **Can a Burglar Cut My Alarm System Wires? , Reviews**

If you have a phone-line-based security system, a savvy burglar might cut the power, or telephone line, or both. They may cut the line, then enter the home and disable the alarm for good. They could even wait nearby for the alarm to use up all its backup battery before they loot the house.<sup>1</sup>



### [How to Remove an Old Alarm System](#)

8 Steps to Removing an Old Home Alarm System  
Removing your old security system takes time and patience. Some systems put a siren on a separate circuit in case an intruder tries to cut the power to the central system. When disconnecting the sirens 5.



### **How to Turn Off ADT Alarm System Without a Code**

A typical ADT security alarm system is between 100 and 115 decibels -- which is pretty loud. And to make matters worse, Cut power to the alarm system from your circuit breaker. Remove the transformer and battery from your alarm system. Take down the

### [How to Remove ADT Panel \(In 6 Easy Steps\)](#)

Locate the ADT control box and make sure to cut off all power to the ADT panel, including the battery backup. This video provides a good example of what you may need to look for if you are dealing with an older ADT panel (the Safewatch Pro 3000) with a control box.





### ADT Alarm System and Device Troubleshooting FAQs

1. How do I reset my keypad after an alarm event? You may want to clear the keypad display history after an alarm event. The process of resetting your keypad varies from system to system. Reset instructions for ADT's most popular systems can ...

### Say Goodbye to Your Old ADT Panel: A Quick Guide on ...

With a little bit of patience and some basic tools, removing your old ADT panel shouldn't be too difficult. Step 1: Locate Power Source to Panel When it comes to installing an electrical panel, the first step is to locate the power source. This may seem like a daunting

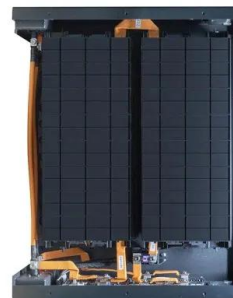


### How To Turn Off The Power To The Smoke Alarm At ...

(Learn How To Disconnect ADT Alarm System) If the power goes, then the battery takes over. Depending on the battery type, you can add a new battery without cutting power, yet it isn't possible to disconnect a smoke ...

### How to Disable Voice on Your ADT Alarm System

How do I contact ADT customer service about voice issues on my alarm system? If you have any further questions about your ADT alarm system's voice prompts, contact ADT customer service directly. They can be reached at (800) 587-4198. You can also reach





### How to Stop the ADT Alarm from Beeping (Low Battery)

Recharge Your ADT Alarm Battery ADT Alarm batteries most often die out due to outside factors like a power outage. When there's a power outage, you'll usually see a "No AC" message. This means there is no AC ...



### [How To Disconnect ADT Alarm System](#)

By the end, you'll know enough about how to disconnect ADT alarm system without alerting the ADT office and police. Use Alarm Code to Deactivate Security This is the best and simplest remedy to a home security alarm malfunction. ADT allows you 30



### How To Turn Off an ADT Alarm System Without a Code (Easy Fix!)

Follow these steps to turn off an ADT alarm system without a code: Step 1: Unplug the system's transformer box and remove its backup battery supply Step 2: Locate the breaker in your panel giving power to the ADT alarm system Step 3: Turn off the ADT



### How To Reset Your ADT Alarm After Power Outage?

As one of the business pioneers, ADT (Home Alarm Systems) knows how to deal with power outages, and its systems are designed to work even when power outages happen. ADT is also one of the most common ...





### ADT Troubleshooting: Severe Weather and Your ADT System

ADT's monitoring centers are not affected by inclement weather and will continue to help protect what's important to you. 3. What happens during a power outage? Your alarm system normally runs on AC (Alternating Current) power from your location. During a



### How to disable / turn off ADT alarm : r/homedefense

You want to remove power to the whole system. Find the alarm panel (it's in a metal box somewhere, usually in the basement or a closet). That box has a panel in it that's attached to ...



### 114KWh ESS



### 4 Ways To Fix Alarm System Beeping After Power Outage

Investing in decent alarm systems like ADT is a great option, and you can rely on their subsection services for a better experience. So, it is a safety mechanism that can inform users if someone tries to tamper with the alarm by cutting off the power to the The

### How Do I Turn off (Power Down) My Home Alarm System?

You can turn off or power down your home alarm system by disconnecting its backup battery and then unplugging the transformer for the device from the wall outlet. You can confirm that the ...





### How to Reset ADT Alarm System (2024 reset guide)

Reset ADT alarm system after a power outage  
Let's suppose that your alarm system has been off due to a power outage in your area. Sometimes it can be off after a battery replacement. In this scenario, you may reset the alarm system by entering the code via



### How to stop ADT unmonitored system from beeping?

I have an ADT alarm system that was originally installed by Brinks, then was taken over by Broadview, and finally taken over by ADT. The model number of the system is : BHS-4000A. The system is unmonitored. Once a day this system tries to call out to ADT but

#### HEAT DISSIPATION

Cold aisle containment, making optimal refrigeration effect:



## Contact Us

For catalog requests, pricing, or partnerships, please visit:  
<https://vdbconstruction.co.za>