



VDB Solar Solutions

How to place a TV on a single photovoltaic panel





Overview

Here's a quick video overview of this tutorial. Check it out below and consider subscribing to my YouTube channel for more DIY solar videos like this! .

First things first, you need to pick a place to mount your parts. Make sure that all your wiring (solar cables, battery cables, TV power cord with or without an extension cable) can.

Place your solar panel(s) outside in a sunny spot and cover it with a towel to reduce the risk of electrical shock. If you want to mount your solar panel, you can use the kit's included.

We're going to add a fuse on the positive wire between the battery and charge controller for safety reasons. If you've never done this before, don't worry, using the parts list provided.

How can I run a TV using solar power?

To run a TV using solar power, you need to install solar panels and additional instruments of a solar system. You can convert solar power to AC for providing power to your television. This setup requires solar panels, batteries, and a converter with a solar charging controller.

How do I Turn my TV into a solar powered TV?

Additionally, you can charge these generators via your outlet, garage, and solar panels. Turn your TV into a solar-powered TV is using a solar generator. The average energy-consuming TV requires a 302.5 Wh battery and a 160W solar panel.

Can a solar panel power a TV?

The solar panel is now properly connected and has started charging the battery. The battery will store all that solar energy which we'll use to power the TV via an inverter. Batteries are direct current (DC), but most TVs run on alternating current (AC). To convert DC to AC, we need to use an inverter.

How many solar panels are required to run a TV?



The number of solar panels required to run a TV depends on the wattage of the TV. To run a device with solar power, you have to understand the energy consumption rate of the TV and the energy production measurement of solar panels. The number of solar panels needed is influenced by the technology and type of solar panels.

How to install a TV solar panel?

However, to start a TV solar panel installation, you need to know either watt or amp figures. Therefore, at this stage, you have determined the maximum wattage in On and Standby modes, estimated the actual watt usage and/or maximum amps, and approximated the amp draw.

How do I choose a solar system for my TV & lighting?

When you're aware of how much energy certain devices require, finding a suitable solar system to power them is as simple as matching the wattage. To power your television and lighting successfully, you would need to have a solar system that produces more energy in watts per hour than all of those devices combined.



How to place a TV on a single photovoltaic panel



Solar Powered TV: Can Solar Generator Run a TV

Absolutely yes! A solar generator is the best option for an off-grid, RV, or compact or medium-sized home TV. Jackery portable solar generators use clean solar energy to power your devices. For instance, you ...

3 Simple Ways to Install Solar Panels

Secure each panel in place with the provided retaining clips. One at a time, carefully lower each solar panel onto the stanchions in its intended spot. Snap the wiring plug from the micro-inverter into the underside of the ...



Installing a Photovoltaic System in Cyprus: Complete ...

Thin-film panels are the least efficient but the most affordable. Polycrystalline panels fall in the middle range of efficiency and cost. Choosing the Right Photovoltaic Panel for Your Needs Evaluation of different factors. When ...



How do solar panels work? Solar power explained

A typical solar module includes a few essential parts: Solar cells: We've talked about these a lot already, but solar cells absorb sunlight. When it comes to silicon solar cells, ...



A step-by-step guide to installing solar panels

6. The solar panel mounts will be installed. 7. The professionals will install the solar panels. 8. The solar panels will then be wired in (the house's electricity will be turned off at this point) 9. The solar panels will be connected ...



A Full Guide to Solar Panel Placement and Installation

The average cost of a single panel is now around \$200. The building codes for solar panel installation vary from place to place. It's important to check with your local code ...



How Are Solar Cells Connected In A Solar Panel?

Solar panels in a single photovoltaic array are connected in the same way that PV cells are connected in a single panel. The panels in an array can be linked in series, parallel, or a ...





Solar Panel for TV and Lights

Using Solar Panels to Power Your TV and Lighting. When it comes to television and lighting, in order to successfully provide the necessary power to these devices, you'll need to know how much power they consume. ...



59 Solar PV Power Calculations With Examples Provided

46. Solar Panel Life Span Calculation. The lifespan of a solar panel can be calculated based on the degradation rate: $L_s = 1 / D$. Where: L_s = Lifespan of the solar panel (years) D = ...

How Are Solar Panels Installed? , Step-by-Step Guide 2024

The mounting system makes sure the panels stay in place, while also helping to position the panels at an optimal angle on the roof, which will lead to more sunlight exposure. ...



A Full Guide to Photovoltaic Panel Installation and ...

PV panels perform best in direct sunlight, and their efficiency decreases in cloudy or shady conditions. Over time, photovoltaic panels experience a natural decrease in efficiency due to aging and exposure to ...



Solar Panel Series Vs Parallel: Wiring, Differences, And Your Right

In such a case, the single solar panel will likely be act as a short-circuit due to its bypass diodes. If an MPPT is used, the bypass diodes will not work, and the single panel ...



Do Solar Panels Need Blocking or Bypass Diodes?

In the above example, you only had to deal with a single solar panel. In real life, this is mostly not the case. You may come across multiple strings as well. A solar panel array ...

Is It Possible for Solar Panels to Power a TV?

These days, you can experience virtually limitless and off-grid entertainment with a solar-powered TV. This environmentally friendly and easy-to-use option has a convenient setup. You need to set a TV in the viewing area ...



The Complete Guide to Solar Panel Wiring Diagrams

Different Configurations for Solar Panel Wiring Diagrams. Traditional residential solar panel systems use a string inverter: multiple PV modules are connected to one another ...



Step-by-Step Guide to Operating Your Solar Powered TV

Installing a solar-powered TV requires specific parts: solar panels, a charge controller, a battery, an inverter, and cables. Tools for the setup include a drill, screwdrivers, and a wrench set. Proper sizing of these ...



How To Install A Solar Panel [A Complete Step-by-Step Guide]

If you're not installing your solar panel system onto the roof, setting up any safety measures may take less time. 2. Install the Solar Panel Mounts. Once all safety measures are in place, it's ...

Solar Panel Output Voltage: How Many Volts Do PV Panel ...

If you know the number of PV cells in a solar panel, you can, by using 0.58V per PV cell voltage, calculate the total solar panel output voltage for a 36-cell panel, for example. You only need to ...



Complete Guide on Solar Powered Televisions - Helius ...

To power your solar powered TV, you either need a single solar panel or multiple solar panels. However, before you run your Television using solar energy, you first need to understand your TV's overall consumption rate ...



How Much Do Solar Panels Cost?

They offer a range of solar panel and battery packages, from £4,995 for a typical 6-panel system. Customers whose electricity is supplied by E.ON Next and have had both solar panels and a ...



How To Install Solar Panels On A Roof & Connect Them

Ideally, install the inverter on an exterior wall between your solar panel's junction box and the main circuit breaker panel to your house. Some code's will require the inverter and your AC Disconnect switch to be within a ...

How Much Energy Does A Solar Panel Produce? , EnergySage

Most home solar panels that installers offer in 2024 produce between 350 and 450 watts of power, based on thousands of quotes from the EnergySage Marketplace.Each of ...



ESS



Shading effect on the performance of a photovoltaic ...

The degradation of the incident solar irradiation on a single cell of the photovoltaic panel leads to a considerable decrease in the power produced by the system (about 1/3 in the case of a fully



How To Mount Solar Panel -- A Step-by-Step DIY Guide

2. Attach the Fixing Bracket to the Solar Panel. Once you've gathered all the tools and followed up on permits and safety requirements, it's time to set up your mounting ...



Solar Panels for TV: Complete Guide To Run TV on ...

There are several options available for running a TV with solar power. You can convert solar power to AC for providing power to your television. It requires solar panels, batteries, and a converter with a solar charging ...

How To Build A Photovoltaic Solar Panel [9 Easy Steps]

Materials Needed for Building a Photovoltaic Solar Panel. Of course, you can only build your own solar panel system with the appropriate equipment. Don't worry. Everything you need is listed ...



Mounting Solar Panels: A Complete Beginner's Guide to Installation

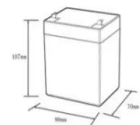

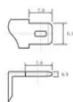
What is Solar Panel Mounting and Racking? Mounting solar panels refers to the process of installing solar energy systems onto a structure such as a building or ground ...



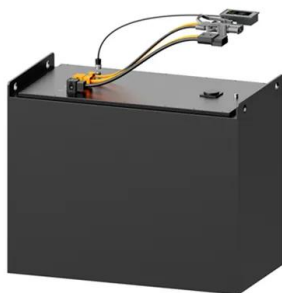
Photovoltaic Basics (Part 1): Know Your PV Panels for ...

However, the efficiency of this type of photovoltaic panel is limited by thermal agitation; otherwise, it would rise as high as 50%. Next Steps. So far, we have reviewed the types of photovoltaic panel available on the ...

12.8V6Ah

- Nominal voltage (V):12.8
- Nominal capacity (ah):6
- Rated energy (Wh):76.8
- Maximum charging voltage (V):14.6
- Maximum charging current (a):6
- Floating charge voltage (V):13.6-13.8
- Maximum continuous discharge current (a):10
- Maximum peak discharge current @10 seconds (a):20
- Maximum load power (W):100
- Discharge cut-off voltage (V):10.8
- Charging temperature (°C):0-+50
- Discharge temperature (°C): -20-+60
- Working humidity: <95% R.H (non condensing)
- Number of cycles (25 °C, 0.5c, 100%doD): >2000
- Cell combination mode: 32700-4s1p
- Terminal specification: T2 (6.3mm)
- Protection grade: IP65
- Overall dimension (mm):90*70*107mm
- Reference weight (kg):0.7
- Certification: un38.3/mds



Solar Panel Wiring Diagram for All Setups [+ PDFs] - Solartap

A solar panel wiring diagram (also known as a solar panel schematic) is a technical sketch detailing what equipment you need for a solar system as well as how ...

Contact Us

For catalog requests, pricing, or partnerships, please visit:
<https://vdbconstruction.co.za>