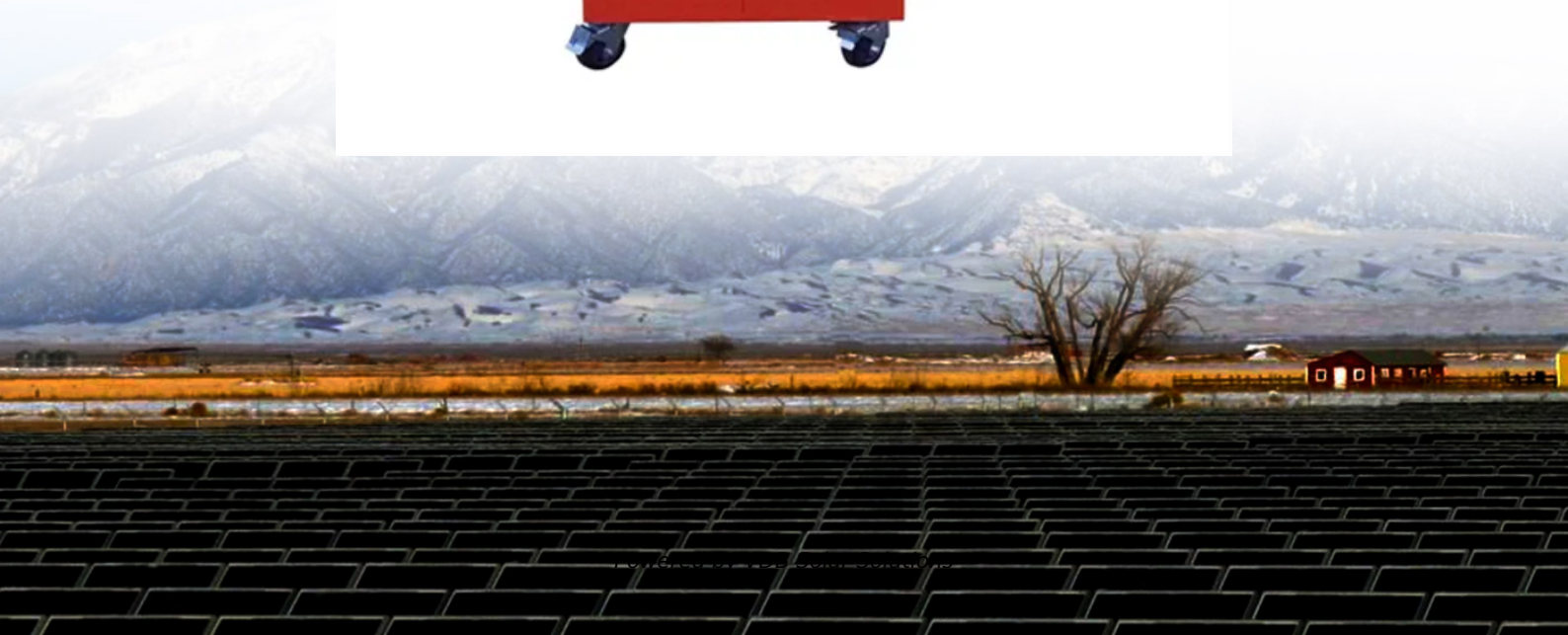


How to position the columns when installing photovoltaic panels





Overview

The best direction is to have your panels facing south, followed by west or east. You can position/optimize your panels on a flat roof using a mounting system. How to calculate solar panel orientation?

The orientation is composed of two parameters: direction and tilt angle. Select your timezone and enter your coordinates (latitude and longitude) to calculate the optimal orientation for fixed solar panels, twice adjusted solar panels, quarterly (seasonally) adjusted solar panels, and monthly adjusted solar panels.

Which direction should solar panels go?

As a general rule, the optimal direction for solar panels in the northern hemisphere is south. And in the southern hemisphere, the direction is north. So, the optimal direction for solar panels in the entire United States is south. The optimal tilt angle for fixed solar panels, as per a rule of thumb, is equal to the latitude of your location.

What is the optimal tilt angle of photovoltaic solar panels?

The optimal tilt angle of photovoltaic solar panels is that the surface of the solar panel faces the Sun perpendicularly. However, the angle of incidence of solar radiation varies during the day and during different times of the year.

How do I choose a solar panel?

Reading the Map: Key elements include azimuth angle (compass direction) and elevation angle (Sun's height). These help determine the best placement and tilt for solar panels. Seasonal Variations: Sun paths vary seasonally; understanding these changes helps adjust solar panel angles throughout the year to maximize energy capture.

What angle should solar panels be positioned in the UK?

Solar water heating. The ideal angle to position your solar panels in the UK is



between between 20° and 50°. Keeping your solar panels positioned between this range will ensure the maximum amount of light hits them throughout the day. In turn, this will also maximise energy production, and your savings and hopefully reduce the payback period too.

Why does solar panel orientation and angle matter in a solar power system?

Prior to understanding why solar panel orientation and angle matter in a solar power system, we need to know how a solar panel collects energy from the sun. Solar panel cells only collect a specific wavelength during absorbing radiant energy from the sun.



How to position the columns when installing photovoltaic panels



The best angle and direction for solar panels [UK, 2024]

The best angle for solar panels is slightly different depending on where you are in the country, as your position relative to the sun changes. To find the ideal angle in several different UK locations, we've used irradiance ...

Determining the Best Location for a PV System

This post will help you to determine the best location for a photovoltaic (PV) system. After you have sized your PV system based upon the calculated the power requirements, you will have to select a location that has ...



A step-by-step guide to installing solar panels

3. Make space for the solar panel accessories (solar inverter, cables and solar batteries, if desired), for instance in a plant room. 4. Plan a day for installation. 5. Erect the scaffolding (this can be done by your supplier or by ...

Point Your Solar Panels in the Right Direction for the Most Power

Industrial solar farms are designed to follow the sun through the day, but your rooftop probably can't do that. Here's how to figure out the best angle for your solar panels. The angle and

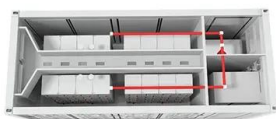


What is the best angle for positioning solar panels in the UK?

The optimal angle for solar panels in the UK is facing south, at an angle between 20° and 50°. The best angle is worked out based on your location's latitude, which means the ...

Solar Panel Direction and Angle in India

The success of a solar panel installation hinges on a harmonious fusion of solar panel angle and orientation, fine-tuned in response to local conditions. By factoring in ...



How to Become A Certified Solar Installer: The Complete Guide

Individuals may need at least a high school diploma or equivalent to enter an entry-level position as a solar installer. From there, a student would learn how to assemble, ...



The best angle and direction for solar panels [UK, 2024]

The impact of direction on solar panel output. Your solar panel system's direction is one of the biggest factors in determining its output. This chart below uses an ...



[Solar Panel Orientation Calculator](#)

Your solar panel orientation is an important part of the sizing of photovoltaic and solar thermal systems. Since solar power produced is directly proportional to the orientation of ...

How do I position the Arlo Solar Panel to get the most sunlight?

The amount of energy that the Arlo Solar Panel can produce depends on several factors: average sun exposure, weather conditions, tilt angle, and dust or debris. A ...



[How to Install Solar Panels on a Shed](#)

Install the inverter on the support wall. Connect it to the fuse box and charge the controller to complete the electrical setup. Step 2: Work on the solar panel connections. Secure at least ...





How To Build A Photovoltaic Solar Panel [9 Easy Steps]

Materials Needed for Building a Photovoltaic Solar Panel. Of course, you can only build your own solar panel system with the appropriate equipment. Don't worry. Everything you need is listed ...



How To Install A Solar Panel [A Complete Step-by-Step Guide]

That being said, installing solar PV panels can be a lot of work, especially for the ordinary person. Here's a complete guide on how to install solar panels with ease. 7-Step Solar Panel ...

[How to Design and Install a Solar PV System?](#)

Suppose, in our case the load is 3000 Wh/per day. To know the needed total W Peak of a solar panel capacity, we use PFG factor i.e. Total W Peak of PV panel capacity = $3000 / 3.2$ (PFG) ...



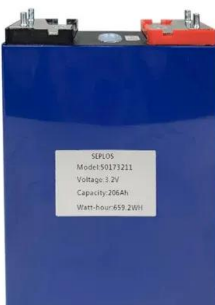
How to Find the Best Orientation and Angle of Solar ...

The tilt angle for solar panels varies specific to your location latitude, season, and time of day. Typically, an optimal angle sits between 30° and 45°. To maximize the energy conversion efficiency, use proper mount ...



How To Install Solar Panels On A Roof & Connect Them

Hopefully, this helps your DIY solar panel installation process go smoother and leaves you less stressed out. This is the four article in our Going Solar post series helping ...



[3 Simple Ways to Install Solar Panels](#)

Dual-access tracking enables the solar panel array to follow the sun across the sky during the day, as well as to adjust its angle to suit the sun's position at different times of the year. In a sunny location, this basically maxes ...

Solar panel inclination angle, location and orientation

Select your timezone and enter your coordinates (latitude and longitude) to calculate the optimal orientation for fixed solar panels, twice adjusted solar panels, quarterly (seasonally) adjusted solar panels, and monthly ...



How to Install Rooftop Solar Panels: A Step-by-Step ...

Preliminary Steps for Solar Panel Installation. Before starting with your rooftop solar panel system, make sure to do some key steps. You need to look at how much electricity you use now. Then, you decide on the right solar ...



Solar Panel Mounting Systems and Their Installation

It is important to know what type of solar panel mounting system is the best for you. these limits are related to the edges of the roof and will be necessary to take into ...



Best direction for solar panels: How to position your solar PV panels

To find out, we used the MCS PV Output Calculator, which lets MCS-certified solar panel installers calculate the best direction and angle for panels anywhere in the UK. It ...

Solar Panel Wiring Basics: Complete Guide & Tips to Wire a PV ...

However, it is still important to learn how to properly install a PV connector, since in some cases or sections, the system may require you to make the connection yourself. ...

TAX FREE

ENERGY STORAGE SYSTEM

Product Model
HJ-ESS-215A(100KW/215KWh)
HJ-ESS-115A(50KW 115KWh)

Dimensions
1600*1280*2200mm
1600*1200*2000mm

Rated Battery Capacity
215KWH/115KWH

Battery Cooling Method
Air Cooled/Liquid Cooled

TAX FREE

1-3MWh
BESS



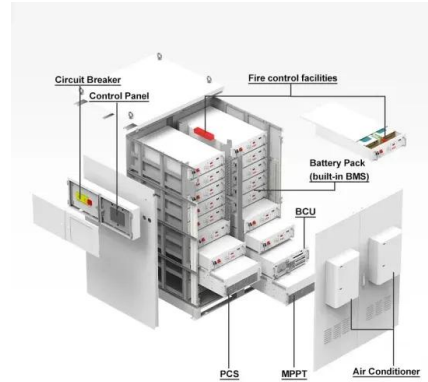
What Direction and Angle Should Solar Panels Face in India?

Orientation: A south-facing roof is generally considered ideal for maximizing solar energy production. East and west-facing roofs can also be suitable but may have slightly ...



Best Angle & Direction for Solar Panels UK

The best angle for solar panels in the UK is between 20° and 50°. The best direction is to have your panels facing south, followed by west or east. You can position/optimize your panels on a flat roof using a mounting system. ...

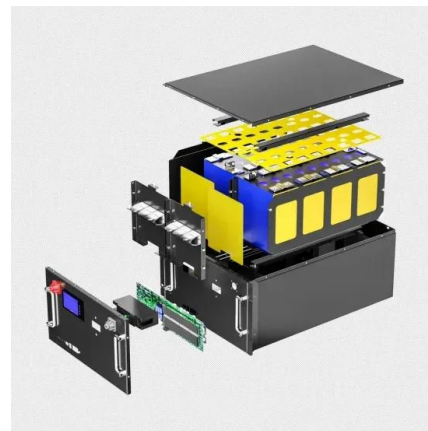


Sun Direction Maps: Your Guide to Optimal Solar Panel ...

How do I read a sun direction map for solar panel placement? ? Understand azimuth angle (compass direction of sunlight) and elevation angle (Sun's height). Use these to optimize solar panel angles and positions.

Solar panel inclination angle, location and orientation

Any implementation of a sustainable photovoltaic solar energy system implies the optimization of the resources to be used. Therefore, it is the basis for the design and assembly of solar installations to optimize renewable ...



- 100KWH/215KWH
- LIQUID/AIR COOLING
- IP54/IP55
- BATTERY 6000 CYCLES

How do I install roof integrated solar panels? , Marley

Roof-integrated solar panel installation is a simple process with Marley SolarTile® - just secure the fixings, place the first tile, push-fit additional tiles and then attach final fixings and flashings. ...



Solar Panel Installation Guide - Step by Step Process

Solar Panels perform at optimum capacity when placed in direct sunlight. When you install your Solar Power system, try to position your photovoltaic panels directly under the ...



Best direction for solar panels: How to position your ...

Here's our guide to positioning your panels in the UK. Solar panels can shrink your carbon footprint and slash your energy bills by providing nearly all the electricity you need, but only if they get plenty of sunshine. ...

Structures for photovoltaic solar panels

Solar panel frames are systems specifically designed to hold photovoltaic modules in place and provide the optimal tilt to capture the maximum amount of solar energy. Their importance lies in the fact that they guarantee ...



What Solar Panel Orientation is best in the UK?

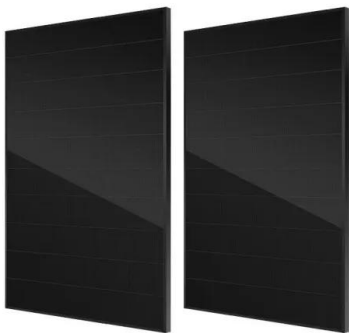
If even one panel is shaded it will reduce the output of all your panels unless you invest in micro-inverters or other optimizing devices. Solar Panel Orientation and Elevation: So we've established that there's a sweet spot for your solar panel ...





The Complete Guide to Ground-Mounted Solar Panels

I. Introduction . Welcome to our guide on ground-mounted solar panels! Nowadays, everyone's talking about solar energy, and it's easy to see why 's a clean, green ...



[Solar Panel Installation Guide](#)

Solar Panel Installation Guide. Once the position of the anchors is determined they can be fixed to the roof. One roof tile is removed to allow the anchor to be screwed to the rafter and then ...

[How Much Do Solar Panels Cost?](#)

Solar panels could reduce your bills and even earn money by generating electricity you can sell back to your energy company. But the average solar panel system of 3.5kWp will cost around ...



Contact Us

For catalog requests, pricing, or partnerships, please visit:
<https://vdbconstruction.co.za>