

# **lbm power system i**





## Overview

---

IBM i (the i standing for integrated) is an developed by for . It was originally released in 1988 as OS/400, as the sole operating system of the line of systems. It was renamed to i5/OS in 2004, before being renamed a second time to IBM i in 2008. It is an evolution of the operating system, with compatibility layers for .

IBM had two distinct POWER- and PowerPC-based hardware lines since the early 1990s: • Servers running processors based on the architecture in the family (later known as iSeries, then System i) running OS/400 (later known as i5/OS, and now )



## Ibm power system i



### Sistema operativo IBM i

IBM i es un sistema operativo totalmente integrado, lo que significa que la base de datos, el middleware, la seguridad, el tiempo de ejecución y el hipervisor están integrados en la pila y se licencian como una única solución. Los clientes no tienen que pagar por el

[???? IBM Power ??,??? IBM i ??????????](#)

2008 ? 4 ?,System i ? System p ?????,??? IBM Power Systems,i5/OS ??? IBM i,??????? ?????????????,IBM i ??? 7 ??,????????????????,????????? ?????,?????????????,?????????????,?????????



### IBM POWER9 on IBM Cloud: More Choice and Flexibility, On ...

IBM POWER9 on IBM Cloud: More Choice and Flexibility, On-Premise and Off Cloud adoption isn't a "one-cloud-fits-all" strategy. The conventional wisdom that an enterprise can lift, shift everything to a public cloud, then figure out the rest later--all while being agile and innovative--is misguided at best. The average enterprise business has 5+ clouds to straddle, [...]

### IBM System i

2008?4?,System i? IBM System p ( ?? : IBM System p ) ??? IBM Power Systems ( ?? : IBM Power Systems )?i5/OS?????????IBM i [3]? ????



[??] ^ Frank G. Soltis Fortress Rochester: The Inside Story of the IBM



1075KWHH ESS

### IBM i

IBM i (the i standing for integrated) [6] is an operating system developed by IBM for IBM Power Systems. [7] It was originally released in 1988 as OS/400, as the sole operating system of the IBM AS/400 line of systems. It was renamed to i5/OS in 2004, before being renamed a second time to IBM i in 2008.

### Gamme Power Systems , Power Systems et IBM i

Gamme de serveurs Power Systems actuellement commercialisée par IBM. Cette gamme est désormais exclusivement composée de modèles Power10 (Scale-Out et Scale-Up Systems). Les derniers modèles POWER9 (Scale-Out Systems) qui étaient encore proposés, ont été retirés de commercialisation en octobre 2023.



### IBM System i

IBM System i ? IBM ??????? ?????? ??????.  
??1988?6????,???? AS/400 (Application System/400),?????? OS/400 (?:OS/400) ??????.  
...



## IBM Power Virtual Server

The IBM Power Virtual Server environment consists of SAN Storage, Power servers, PowerVM Hypervisor, and AIX Operating Systems that are certified for Oracle DB including Real Application Clusters (RAC).



## [Everything To Know About AS400 iSeries \(IBM i\)](#)

IBM rebrands the AS/400 as an "eServer iSeries," highlighting its integration capabilities and e-business readiness. iSeries (later named IBM i) embraces web technologies, Java integration, and XML. Eventually, IBM merged System i and System p (Power

## Serveurs Power , IBM

IBM Power est une famille de serveurs basés sur des processeurs IBM Power capables d'exécuter IBM AIX, IBM i et Linux. Répondez plus rapidement aux besoins des entreprises, protégez vos données depuis le coeur jusqu'au cloud et rationalisez les analyses et l'automatisation.



## [Introduction to Linux on IBM Power Systems](#)

With IBM's world-class virtualization technologies, IBM Power Systems, can simultaneously run workloads using Linux, IBM AIX, and IBM i operating systems. IBM Power Systems running Linux consists of IBM's top ...







### System i

IBM System i -  
Integration System  
x?System p?System z) IBM Power Systems (IBM i)  
- POWER9?Integration?



### IBM i

IBM i Power Systems  
PureSystems?AIX?Linux? IBM i  
??



### 9040-MR9 (IBM Power System E950)

The IBM Power System E950 (9040-MR9) is based on POWER9 processor-based technology. Use this information to find the system overview and the planning, installing, removing, replacing, configuring, and troubleshooting procedures.







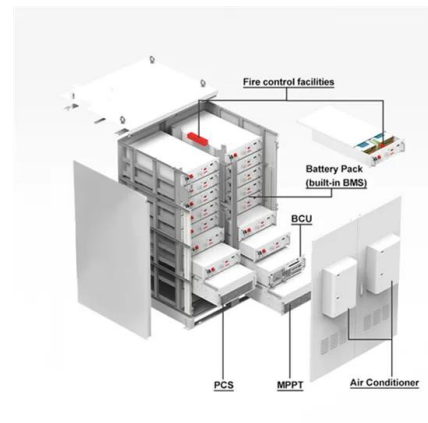
### IBM i: A History in Numbers

IBM i May 21, 2019 While some of its roots can be traced back to the System/38 world of 1970's and 1980's, IBM POWER servers running IBM i started life as the AS/400 (Application System/400) in 1988, a fully integrated hardware and software platform. At its heart, IBM i's history is the story of each



### **Betriebssystem IBM i**

IBM i Solutions Editions verbinden IBM i- und Power-Server mit zentralen Geschäftsanwendungen von branchenführenden unabhängigen Softwareanbietern (Independent Software Vendors, ISVs). Sie sind so flexibel, dass sie die Anforderungen vieler kleiner bis mittelständischer Unternehmen erfüllen.



### **IBM i operating system**

IBM i is an operating system for IBM® Power® servers. IBM i is a fully integrated operating system, meaning the database, middleware, security, runtime, and hypervisor are all integrated ...



### **IBM Power Systems**

IBM had two distinct POWER- and PowerPC-based hardware lines since the early 1990s: o Servers running processors based on the IBM PowerPC-AS architecture in the AS/400 family (later known as iSeries, then System i) running OS/400 (later known as i5/OS, and now IBM i)

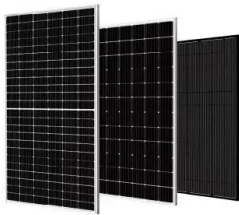






### Getting started with IBM i

Ultimately, the hardware and I/O platform of the AS/400 line converged with the hardware and I/O of the AIX-based RS/6000 until, in 2007, IBM Power Systems was launched. In early 2008, the operating system was given its current name, IBM i. The latest IBM i 7.



### IBM System i

IBM System i ? IBM ??????? ?????? ??????  
??1988?6???,???? AS/400 (Application  
System/400),???????? OS/400 (?:OS/400) ??????  
...



## Contact Us

---

For catalog requests, pricing, or partnerships, please visit:  
<https://vdbconstruction.co.za>