

Installation of photovoltaic inverter lines





Overview

What is a PV inverter?

The inverter is a key component of the PV system and is usually installed near the main electrical panel. It must be easily accessible for maintenance and monitoring.

Where should a PV inverter be installed?

An inverter supplied from a PV array must preferably be installed in a dedicated circuit in which: no current-using equipment is connected, and no provision is made for the connection of current-using equipment, and no socket-outlets are permitted. An inverter must not be connected by means of a plug with contacts which may be live when exposed.

What is the installation phase of a photovoltaic system?

The installation phase of photovoltaic (PV) systems is a critical step that involves several key activities to ensure the system operates effectively and safely. Here's a more detailed look at what this phase entails:

How do I connect a PV system to the grid?

Grid Interconnection Application: Before connecting a PV system to the grid, an application must be submitted to the local utility company. This application includes detailed specifications of the PV system, such as its capacity, the type of inverter used, and the configuration of the solar array.

Do solar panels need an inverter?

However, to truly harness the potential of solar energy, connecting the solar panels to an inverter is essential. The inverter serves as the heart of the solar power system, converting the direct current (DC) electricity produced by the solar panels into alternating current (AC) electricity, which is suitable for powering homes and businesses.



Can I Touch the PV panels when the inverter switch is on?

Do not touch the PV panels or any rail system connected when the inverter switch is ON, unless grounded. **WARNING!** SafeDC complies with IEC60947-3 when installing the system with a worst case SafeDC voltage (under fault conditions) < 120V. **CAUTION!** This unit must be operated according to the technical specification datasheet provided with the unit.



Installation of photovoltaic inverter lines

[Photovoltaics in Buildings](#)

2.2.3 Inverter earthing 22 2.2.4 Lightning and surge protection 22 2.2.5 Lightning protection systems 22 2.2.6 Surge protection measures 23 2.3 Design part 3 - a.c. system 24 The ...



[Clearline fusion Roof Integrated Solar PV](#)

Roof Integrated solar PV. As solar power moves beyond government subsidy to become a home improvement option, its kerb-appeal is becoming more and more important. Integrated solar ...



Solar Panel Building Regulations & Planning ...

Solar panel building regulations. Solar panel installations have to pass standard building regulations for the property - it's a legal requirement for many home improvements.. The key areas are structural safety of a building (Part A) and ...



Line Filtering for Solar Power Inverters , DigiKey

FN2200 Series EMC/EMI Filters Schaffner's FN2200 series standard filters are designed for use with photovoltaic (PV) inverters. Related Articles and Blogs An Engineers ...



How to connect a PV solar system to the utility grid

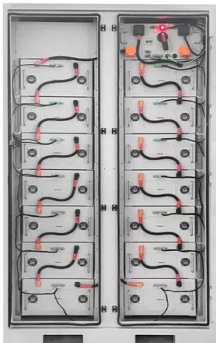
An adequately sized PV service disconnect box must be used prior to making the connection between the junction box and the solar inverter. By connecting on the Line side, it avoids de ...

How to Design and Install a Solar PV System?

Design and installation of solar PV systems. Size & Rating of Solar Array, Batteries, Charge Controller, Inverter, Load Capacity with Example Calculation. This also helps to plan the installation of inverter, converts, and battery banks. ...



To Strive forward No Energy Waste



- ✓ All in one
- ✓ 100~215kWh High-capacity
- ✓ Intelligent Integration

Power One AURORA Installation And Operator's Manual

Photovoltaic Inverters. AURORA inverter pdf manual download. Sign In Upload. Page 1 ® AURORA Photovoltaic Inverters INSTALLATION AND OPERATOR'S MANUAL Model ...



Solar Panel Wiring Basics: Complete Guide & Tips to Wire a PV ...

For the ending points of the system, you may be able to use an MC4 extension cable that generally comes in multiple sizes to interconnect the PV system and the inverter. ...



Solar Panel Installation Guide - Step by Step Process

Solar Panels perform at optimum capacity when placed in direct sunlight. When you install your Solar Power system, try to position your photovoltaic panels directly under the ...

How to Install Solar Panels (Detailed Step-By-Step Guide)

Step 4.5 How to install solar panels and inverter . The focus here is to connect the solar panel to the inverter. This means that the solar array is grid-tied and without a battery ...



The Complete Guide To Solar Panel Wiring Diagrams

String Inverter Systems: In contrast to microinverters, string inverters are connected to multiple solar panels, or "strings," in series. This centralized approach is often more cost-effective for larger installations. However, ...



[INSTALLATION GUIDE ALL IN ONE + GIV-GATEWAY](#)

Installation of the GivEnergy All in One and Giv-Gateway must be carried out by a The Giv-Gateway interface features connections for a PV inverter, EV charger, grid and home storage ...



Hybrid, solar, photovoltaic, wind installation single-line diagram

Single-line diagram of a hybrid photovoltaic-wind installation; with batteries and a dc/ac inverter to feed an isolated alternating current network. (the inverter maintains the network). includes ...

[Installation Operation Manual](#)

As shown in Fig 1.1 above, a complete photovoltaic grid-connected system includes photovoltaic modules, photovoltaic inverters, public grids and other components the photovoltaic module ...



Solar PV design and installation , PPT , Free Download

This document summarizes the basics of solar PV systems and provides an example design. It discusses key components like solar panels, batteries, charge controllers ...



Solar panel installation: a guide for installers

This means an inverter is needed to convert the energy from DC to AC. Inverter units can be installed inside, in a location that can be easily accessed for maintenance. Battery ...



12V 10AH



Solar Inverter Tutorial: Setup & Installation Guide

Solar Inverter Installation Guide: Key Steps and Considerations. The solar inverter installation guide provides essential information on the key steps and considerations for a successful installation. By following these ...

TECHNICAL SPECIFICATIONS OF ON-GRID SOLAR PV POWER ...

The scope includes guidelines and practices for the Supply, Installation, Testing and commissioning of On- Grid PV power plants (Roof-top/Ground Mounted) All the necessary ...



Installing a Photovoltaic System in Cyprus: Complete Guide

The incentives and financing options available for the installation of photovoltaic systems in Cyprus can make the installation process more affordable and accessible for homeowners. By ...



DOMESTIC SOLAR PHOTOVOLTAIC

Micro-Inverter Inverter which has one or two solar PV modules connected to it, typically installed at the back of the solar PV modules. Module The Solar PV panel including all solar PV cells, ...



Solar Power Inverters and EMI Filtering Techniques

3. IGBTs are widely used in power electronics due to their high voltage and current capabilities, fast switching speed, and low on-state voltage drop, making them ideal for ...



Solar Inverter Installation Guide

Our solar panel installation guide includes step-by-step instructions to help you through every step of the solar and inverter installation process, whether you plan on installing ...



Solar Inverter Placement in Your Home

Choosing the right location for your solar inverter is a critical decision in the process of setting up a solar PV system for your home or business. The inverter plays a ...

Warranty
10 years

LiFePO₄

Intelligent BMS

Wide Temp.
-20°C to 55°C





A Guide to Photovoltaic Systems Installation: From

Follow along with the essential steps of photovoltaic systems installation, from mounting solar modules and connecting to the grid, to commissioning and regular maintenance for optimal ...



Single-line diagram of hybrid solar photovoltaic-wind installation

Single-line diagram of a hybrid photovoltaic-wind installation; with batteries and a dc/ac inverter to feed an isolated alternating current network. (the inverter maintains the network). includes ...

Technical specifications for solar PV installations

The red line represents the peak output of a Solar PV system with peak power 650kWp. Demand peaks and solar PV generation peaks align well in the case of typical office buildings. In sizing ...



A Guide to Photovoltaic Systems Installation: From

This article walks you through the basics of PV system installation, focusing on the practical steps from mounting modules to connecting the inverter to the electrical grid, and emphasizes the ...



Installation and safety requirements for photovoltaic

9 PV ARRAY CABLE BETWEEN ARRAY AND INVERTER 26 10 INVERTER INSTALLATION 28 10.2 PV array DC isolator near inverter (not applicable for micro inverter AC and modules ...



HANDBOOK ON DESIGN, OPERATION AND MAINTENANCE OF SOLAR PHOTOVOLTAIC ...

2.2 PV Modules 3 2.3 Inverters 3 2.4 Power Optimisers 4 2.5 Surge Arresters 4 2.6 DC Isolating Switches 4 2.7 Isolation Transformers 4 2.8 Batteries (for Standalone or Hybrid PV Systems) 4 ...

Contact Us

For catalog requests, pricing, or partnerships, please visit:
<https://vdbconstruction.co.za>