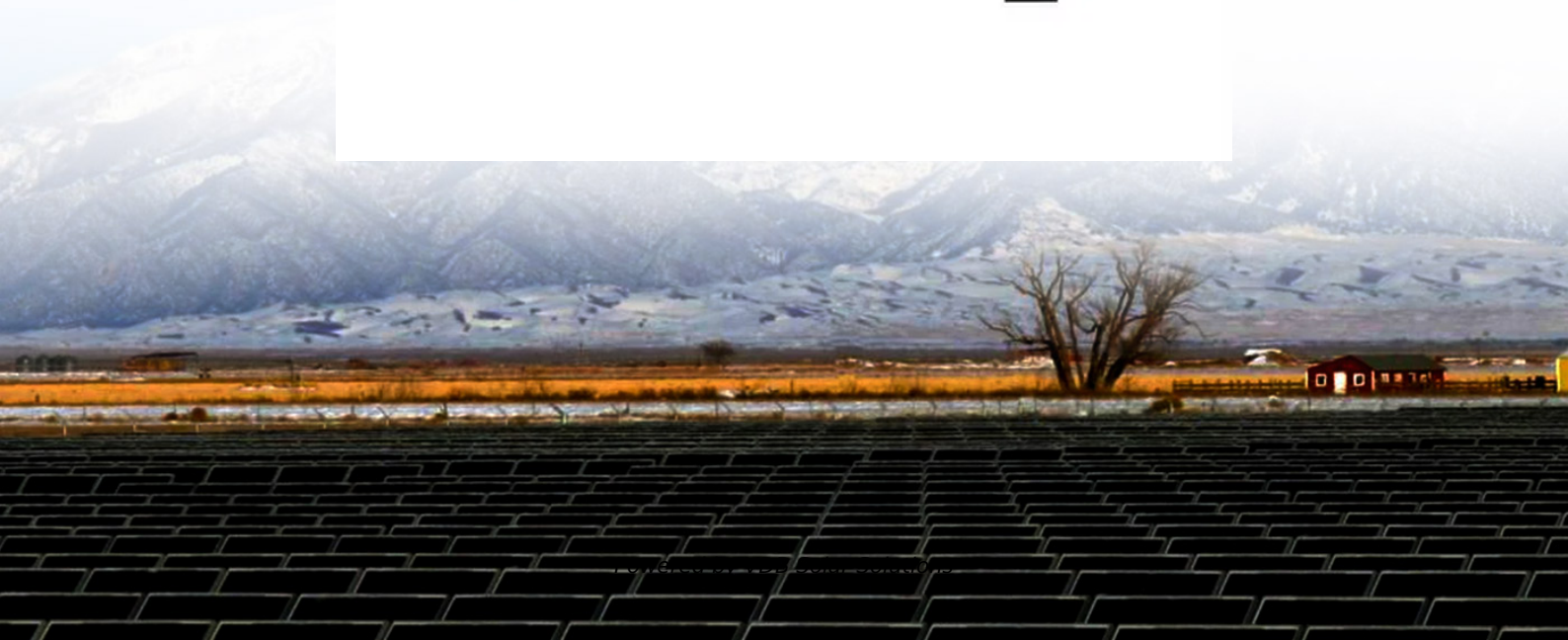
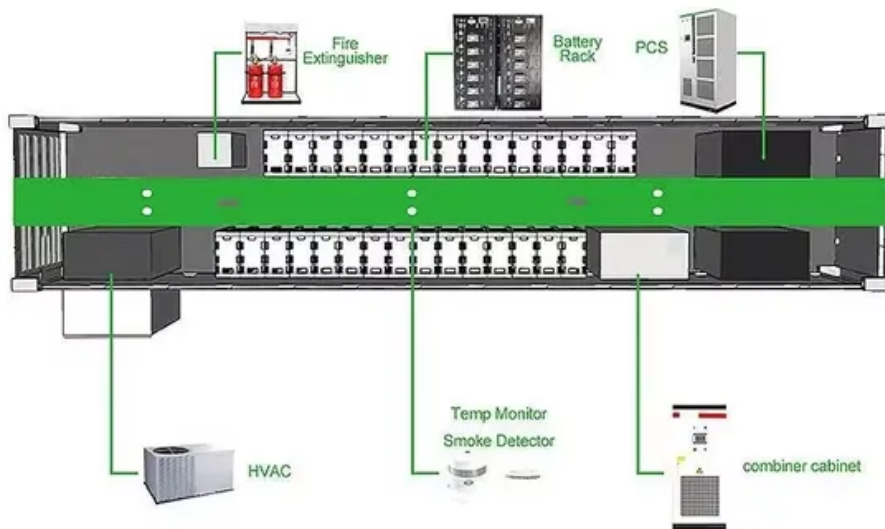


Installation of photovoltaic panels on cast-in-place sloped roof





Overview

Can solar panels be mounted on a flat roof?

This means there are two different mounting systems to help ensure you get the best out of your solar panels on a flat roof. A mounting system is critical for solar panels on a flat roof, as by using a framing system, the panels can be tilted toward the sun, enhancing their efficiency.

Can solar panels be installed on a commercial roof?

If you're considering installing a residential or commercial solar panel system, you might wonder if your roof type is appropriate for a solar installation. The good news is that solar panels can be installed on just about any roof type, but the installation process and mounting hardware might vary from material to material.

How do I install solar panels on a flat roof?

There are a few crucial steps to follow when installing solar panels on a flat roof: To start the process, an engineer will carry out a structural survey to check if your roof is suitable for handling the solar panels' weight and the ballast used to secure them.

Can a photovoltaic system replace roof cladding?

It is possible for photovoltaic systems to replace roof cladding entirely. This is known as a solar or energy roof. Additionally, PV modules can be integrated into the roof cladding. Solar roof tiles are a special type of in-roof installation. They can be integrated into the existing roof cladding without any extra mounting systems.

Where should solar panels be installed on a roof?

The best place to install solar panels on a roof (flat or sloped) is on a south-facing section, as it will receive the most daylight throughout the day, optimising electricity production.



Can a PV system be installed on a flat roof?

However, these advanced tracking technologies are primarily recommended for large-scale outdoor installations due to their complexity and maintenance requirements. Installing a PV system on a flat roof requires thorough consideration of the roof's structure and specific mounting requirements.



Installation of photovoltaic panels on cast-in-place sloped roof

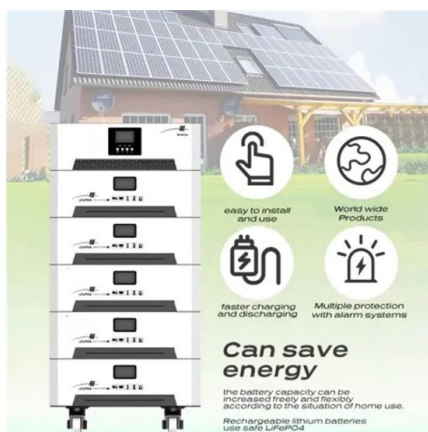
[Installing Solar Panels On Low Slope Roofing](#)

When planning the installation of a low-slope rooftop solar array, it's crucial to start with a thorough structural evaluation of the roof deck and the building. Consider the age and type of roofing materials to ensure the right steps are ...



How close to the edge of your roof can your solar panels go?

In the past I've written about solar panel clamping zones which determine where, on a solar panel's edge, you can place the clamps that attach the modules to their mounting ...



[Solar panels: Is your roof suitable?](#)

However, what needs to be considered is how the slope of your roof (or lack thereof) will affect any solar panel yield. The ideal roof pitch angle is between 30-40°, but even if the angle of ...

[Installing Solar Panels On Low Slope Roofing](#)

In most low slope roofing applications, water intrusion is kept at bay by flashing the attachment points. Different low-slope roof coverings will have different flashing requirements. Wind ...



Calculation Methods for Array Spacing of Photovoltaic Systems ...

When installing PV systems on pitched roofs, such as those made of color steel tiles or ceramic tiles, the installation method typically follows the natural slope of the roof. In ...

What's the Best Roof Pitch for Solar Panels?

Hiring a solar panel installer to help you plan your placement is ideal, but if you're in the early stages of planning, these are some tips to keep in mind that can help you ...



How to install photovoltaic panels on the roof

Flat roof PV systems are generally installed in the form of concrete columns and PV brackets. The investment cost is not high and the economy is better. On a horizontal roof, we can determine the angle of the PV panels by adjusting the ...



PERFORMANCE EVALUATION OF SOLAR PHOTOVOLTAIC PANEL MOUNTED ON SLOPED

The highest temperature attained by the photovoltaic panel is when it was directly mounted on the roof as 76.5°C while the other photovoltaic panels mounted at a gap ...



Can You Install Solar Panels On Concrete Roof? , Eco Happy

The number of solar panel installers on site. How Much Does It Cost To Install Solar Panels On Concrete Roof? According to the Energy Saving Trust, the average price for ...

Fixing solar panels to membrane roofs.

Ways to fix Solar PV to the roof structure. So now we have looked at the roof structure and the roof coverings we can look at the different ways of mounting solar on the roof. Obviously, ...



Can you place solar panels on a sloped roof?

Before we dive into the installation process, let's first understand what a sloped roof is. A sloped roof, also referred to as a pitched roof, is a roof that has an incline or slope rather than being flat. Sloped roofs are commonly ...



Ultimate Guide to Photovoltaic Installation: Step-by-Step ...

Looking to install a photovoltaic (PV) system? Our detailed guide provides step-by-step instructions for pitched, in-roof, and flat roof mounting. Avoid common mistakes and ensure a ...



[Roof Anchor System for Solar Panels](#)

PV panel anchors are installed and flashed before installing racks and panels. (Source: IBACOS.) Figure 6. Lag-Bolted L Brackets for Mounting PV Panels to Roof Decking. (Source: Solar Rating and Certification Corporation 2020.) ...

[HEALTH AND SAFETY Solar panel installation](#)

A contractor and a self-employed roof worker were both given suspended prison sentences and 280 hours of community service when they dropped some of their materials and injured a ...



Structural Requirements for Solar Panels -- Exactus Energy

ASCE 7 Guidelines. The American Society of Civil Engineers (ASCE) provides guidelines for the structural design of solar panel installations through their publication, ASCE ...



Solar Panels on Flat Roofs: Costs, Pros & Cons (November 2024)

Flat roof solar panel mounting is usually done with ballasts, which can also incur extra costs during purchase. Ballasts can be around £60 to £120 per kilowatt on average ...



A Step-by-Step Guide to Solar Panel Installation

Solar panel installation is the process of setting up a solar energy system on a property, whether it be a residential solar system, a commercial building with commercial solar panels, or another ...



Solar Panel Building Regulations & Planning Permission

Solar panel building regulations. Solar panel installations have to pass standard building regulations for the property - it's a legal requirement for many home improvements.. The key ...



[The Complete Guide To Rooftop Solar Mounting](#)

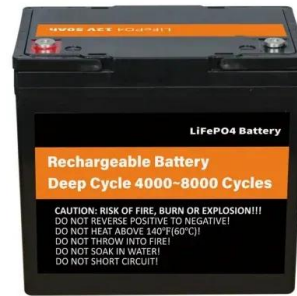
There are several ways to secure a solar panel to a roof without drilling. You can use adhesive or industrial-strength magnets to attach the panel to the roof. You can also use ...





Are solar panels on a flat roof a good idea? , Homebuilding

Unlike pitched roofs, which limit panel placement to the roof's slope, a flat roof allows the panels to be positioned at the optimal angle and direction to maximize sun ...



Solar Panel Mounting Systems and Their Installation

Most houses have a sloped roof design. Therefore, the solar mounting structure needs to adjust solar panels to an inclined surface. In order to do so, manufacturers offer several options: #1 Railed mounting system. The ...

What Is the Best Roof Design for Solar Panels and What If Mine's ...

If you're looking to go solar at home, chances are you're going to put those panels up on your roof. Ground-mounted solar is a great option, but it's uncommon to have ...



How do I install roof integrated solar panels? , Marley

Roof-integrated solar panel installation is a simple process with Marley SolarTile® - just secure the fixings, place the first tile, push-fit additional tiles and then attach final fixings and flashings. ...



Installing Solar Panels on Different Roof Types

However, solar racking companies and installers have crafted many intelligent and safe ways to make putting solar panels on a tiled or shingled roof easy. Can you install ...



Is it possible to install solar on a sloped roof without ...

What if you could install traditional solar panels on a sloped roof with no penetrations? Not low-watt, adhesive modules; not flexible thin-film; but rigid, glassed, crystalline solar panels on rails. Impossible, right? According to ...



Can Solar Panels Be Installed on a Flat Roof in the UK?

Always check with a qualified solar PV installer that your roof is suitable for solar panels. More roof space required. Solar panel systems on a flat roof take up more space. The ...



Solar Panel Fixing Options

An in-roof solar panel system sits on top of the roofs battens and is then tiled or slated around. All great place to install solar panels. Fixing solar to trapezoidal roofs don't always require ...



Solar Panel Mounting and Racking: An Overview

On top of each horizontal rail, solar panels essentially "snap into place" with support against heavy weather conditions on a sloped roof. Installing the Electric Wiring : After ...



Building Matters Final Flashcards

A Precast concrete B Cast-in-place concrete C EPMD membrane D Structural wood panels E Corrugated steel and more. A A perfectly flat roof B 2:12 sloped roof C A 8:12 sloped roof D ...

Solar Panels for Flat Roofs: Roof Requirements [2023]

Solar Panels can be the wisest investment you have made so far for your commercial building to produce energy. Solar panels for flat roofs are not more expensive than a standard sloped ...



Contact Us

For catalog requests, pricing, or partnerships, please visit:
<https://vdbconstruction.co.za>