

# **Installation procedures for wind power generation equipment**





## Overview

---

How long does it take to install a wind turbine?

The length and complexity of the installation process depends upon the size and type of wind turbine. Prior to any installation it is necessary to commission a technical survey of your site and monitor local windspeeds over a period of time (at least 3 months). (Click to enlarge).

How to build a wind turbine?

Foundation Construction: Depending on the turbine size and type, construct a suitable foundation to ensure stability and support. The installation of a wind turbine is a complex process that should ideally be handled by professionals. It includes the assembly of the turbine components and their secure installation on the site.

How to install a vertical axis wind turbine?

Homeowners can successfully install their wind turbines by following these steps and paying attention to safety requirements. The electrical wiring of a vertical-axis wind turbine is an important step in the installation process. It is essential to connect the wiring correctly to ensure the turbine operates efficiently and safely.

What should be included in a wind turbine installation plan?

The wind turbine installation plan will also consider the unique challenges and weather conditions of the site. 2. Risk assessment. A typical wind turbine installation requires a variety of specialist lifts as part of its transportation, offloading, electrical installation, commissioning work and final connection.

How do I install a wind turbine?

Apply for Permits: Obtain all necessary permits before proceeding with installation. This may include building permits, electrical permits, and others, depending on your location. Select a wind turbine that meets your energy



needs and is suitable for the wind conditions and space constraints of your site.

How should a wind turbine be mounted?

The mounting structure should be firm enough to accommodate the weight of the turbine and should also be placed in an area that receives a steady flow of air. Additionally, take note of any local regulations or restrictions that may apply to where and how you can mount your turbine.



## Installation procedures for wind power generation equipment

---



### [Users' Manual for wind turbine](#)

3.2 Procedures to assemble the wind turbine generator. (1) To elicit the generator cables with cables for anemoscope and dogvane (anemoscope and dogvane for 3KW & above models) ...

### [G99 Connection Procedures Guidance Document](#)

construction by a Generator to any Power Generating Module, or the manner of its operation. Power Generating Facility (e.g. some wind turbines are induction or asynchronous All of ...



### **Micro-Hydro Power: A Beginners Guide to Design and Installation**

solar power, wind, biomass, and fl ow-ing water to produce power to run farm equip-ment. Many of the technologies for converting these renewable sources into useful power have been with ...

### **Division 48 - A Comprehensive Guide to Electrical Power Generation ...**

Structural components and mounting systems provide the necessary support for electrical power generation equipment, such as solar panels, wind turbines, and hydroelectric ...

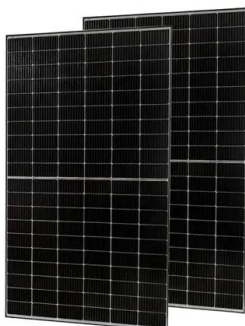


### 1.2 A Wind Project: Step by Step , One Power Company

3. Land Availability: Wind turbines are big. To install these large turbines on site, we'll need a sufficient amount of land near the facility. Wind for Industry projects typically require an 800 ...

### How to Install Solar Panels - The Installation ...

Proper installation techniques must be followed to ensure the system functions optimally and meets all safety and compliance standards. Wiring System Installation. The installation of the wiring system involves connecting ...



### Requirements for installation and use of solar and wind power

1. Noise pollution. It is known that wind turbines generate a certain amount of noise at frequencies which can be a nuisance and possible hearing damage to people.



### Installing marine power generation and distribution equipment ...

obtain clearance to work on the system and observe the power isolation and safety procedures; return all tools and equipment to the correct location on completion of the ...



### SOP Manual for Wind Electric Power Generation SOP-851

The SOP on Wind Electric Power Generation gives an overview of the Sector. The importance of wind energy and the momentum it has gained in recent years are mentioned. The manual ...

### DNVGL-ST-0054 Transport and installation of wind power plants

Transport and installation of wind power plants  
DNV GL AS 1.3.2 Definitions Table 1-3 Terms  
Term Definition asset term used in the context of wind power plant projects to describe the ...



### Dynamic Cable System for Floating Offshore Wind Power Generation

Offshore wind power generation has two variations in installation configuration (see Fig. 1). In Japan, floating offshore wind power generation (in which the wind power generation ...



### Installation of offshore wind turbines: A technical ...

The installation phase is a critical stage during the lifecycle of an offshore wind turbine. This paper presents a state-of-the-art review of the technical aspects of offshore wind turbine



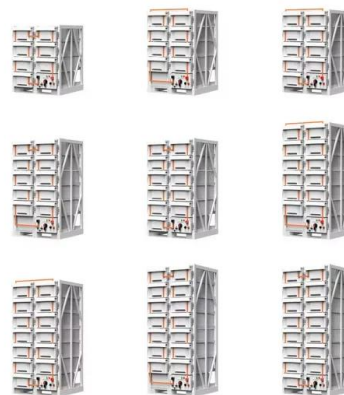
### Marine Grade 2000W 24 Volt Wind Generator User Manual

6-2 Assembly procedure 6-3 Attaching to pole 7 nnecting the system Do not install the wind generator if the pole to which it will be attached is not standing straight up. The wind generator ...



### Installation of offshore wind turbines: A technical review

Wind turbine installation vessels. Given the development trend of OWTs, larger wind turbines steadily appear on the market. To keep up with the size growth of OWTs, next ...



### The Eight Stages of Wind Turbine Installation

7. Fixing wind turbine components in place on-site. AIS Wind Energy's specialist installation team will assemble all components and install and fix the wind turbine's five major ...





ONSITE GENERATION INSTALLATION PROCEDURES

solar installation, is applicable for any source of onsite generation. CEC must be fully aware of, and approve, any Member owned onsite generation. Therefore, prior to installation of any ...



**Offshore Wind Subsea Cable Installation Best Practice**

Offshore Wind Subsea Cable Installation Best Practice Name: Jacky Yao Time: 9th May 2019. o Ancillary Equipment (Turntable, Tensioner, Gantry, etc) Best Practice- Selection of Burial ...

Wind Turbine Installation Guide

Microsoft ?????????????? Cookie ?????????????????????? ?????????????,????????????????????????????????



**Requirements for installation and use of solar and wind power**

responsibilities associated with installation and operation of plant and equipment and would be applicable to any such alternative power generation installation irrespective of whether such ...



## Power Generation by Offshore Wind Turbines: An Overview on ...

Wind energy is one of the most sustainable and renewable resources of power generation. Offshore Wind Turbines (OWTs) derive significant wind energy compared to ...



### [Wind Turbine Installation Guide](#)

Wind Turbine Installation Guide. How is a wind turbine installed? The length and complexity of the installation process depends upon the size and type of wind turbine. Prior to any installation it is necessary to commission a ...

## Development, test, installation, and commissioning of the 3 MW ...

o Superconducting generators can be o much smaller than present day "state of the art" generator (Ecoswing: 5.4 m ->4 m ) o much lighter than present day "state of the art" ...



### G99 Connection Procedures

connected to that Customer's Installation is a Generator. Generating Unit Any apparatus that produces electricity. Installer The person who is responsible for the installation of the Power ...



### Marine Grade Wind Generator

will yield a 100% increase in power from the wind generator. A little more money spent on a higher tower will harvest the same power as 2 machines! Preference should be given to the ...



### **How To Install and Maintain Small Wind Turbines To Power Your ...**

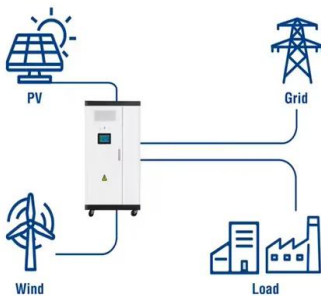
The shift towards sustainable living has brought wind power to the forefront of renewable energy solutions, especially for homeowners. As we increasingly seek ways to ...

### **Installation, Safety and Maintenance Procedures for Diesel Generator**

Industrial Power Units; We Buy Used Equipment; Our Equipment Expertise. Used Generators for Sale; Installation Procedures; Generator Safety Tips. Used ...



### **Utility-Scale ESS solutions**



### **Floating offshore wind farm installation, challenges and ...**

While Table 3, Fig. 6, Fig. 7 incorporate both fixed and floating offshore installation studies under the umbrella of "offshore wind installation studies", it is crucial to note ...



## Connecting commercial generation to the electricity networks

The revised fast track procedures for small scale generation (found in EREC G99) were implemented 9th November 2022, and are summarised below: The power generating modules ...



## Floating offshore wind turbines: Installation, operation, maintenance

This was followed by the installation of a 25 MW floating wind farm in the west coast of Portugal. The wind farm consists of three MHI Vestas 8.4 MW turbines mounted on Principle Power's ...

## Overview of the development of offshore wind power generation ...

The COVID-19 pandemic has greatly affected the global offshore wind power industry [9], which also revealed some shortcomings of the Chinese offshore wind power ...



## Contact Us

---

For catalog requests, pricing, or partnerships, please visit:  
<https://vdbconstruction.co.za>