

# **Is it okay to lay photovoltaic panels on the roof of a thermal power plant**





## Overview

---

A wide range of geographical factors will inevitably impact upon the output of your solar thermal installation. Southern and coastal areas receive the most sunlight, although most areas of the United Kingdom are suitable for the generation of solar energy. It is vital that the property's roof has little or no shade coverage.

An unobstructed, south-facing roof with an inclination of 30° from the horizontal is optimal, although a solar thermal array can be installed at any angle.

In England and Wales, the domestic installation of mounted solar collectors is likely to be considered 'permitted development', meaning.

Can you put a solar panel on a thatched roof?

Thatched roofs are not suitable for solar panels. There's no mounting system designed for thatch, which wouldn't be ventilated well enough underneath the panels and so would rot. And given that thatched roofs already present a fire risk, putting an electrical system on top wouldn't be sensible!.

Where should a photovoltaic system be installed?

The ideal place to put a photovoltaic system is on the rooftop, as it's generally the spot most exposed to the sun and would otherwise be unused space. But which types of roof are suitable for solar panels?

The first step is to make sure you own your roof.

Can solar panels be installed on a slate roof?

Asphalt shingles or metal roofs are easier for solar panel installation. Metal roofs with standing seams are handy, because installers can fix solar panels without making holes. This option may cost the most, but it's a good idea. With all the information above, you're now ready to proceed with your solar installation on your slate roof.

Can solar panels be installed on a flat roof?



You can have solar panels on a flat roof, but they need a specialist mounting system to raise them to a suitable angle and provide ballast. Designing the system also requires a compromise between packing the available space and leaving room for shading between rows of modules.

Do solar panels need to be installed at the same time?

The solar panels do need to be installed at the same time as the green roof, however, since the mount is fitted underneath the growing medium to weigh it down. On the plus side, the transpiring vegetation keeps the panels well ventilated. Thatched roofs are not suitable for solar panels.

Can a roof be used as a solar power source?

“If there is not enough space on the roof to meet the desired power output goals then property owners can potentially use other locations including ground-mounted solar, as well as the sides of buildings, or shed and garage roofs,” Ben adds.



## Is it okay to lay photovoltaic panels on the roof of a thermal power

---



### Legal and Planning Permissions Associated with a Solar Panel ...

2 ???· Legal and Planning Permissions Associated with a Solar Panel System UK. Solar Panel Legal and Planning for England. In England and Wales, the domestic installation of ...

### How To Install Solar Panels on a Home Roof & Connect Them

Peak sun hours have an impact, but solar panels can pick up energy even in low-light situations. You don't need to live in a desert for your solar panel to generate ...



### [Solar panels on a flat roof explained](#)

Pros of flat roof solar panels. Easier to install: Because the surface is not sloped, flat roof solar panels are easier to install than pitched roof solar panels, and easier to ...

### Building regulations for solar panels: explained [UK, 2024]

Installers must only fit solar panels if they're sure your roof can hold their weight, and carry on doing so for up to 40 years. Fortunately, most roofs in the UK are built to hold much more than a solar panel system, which ...

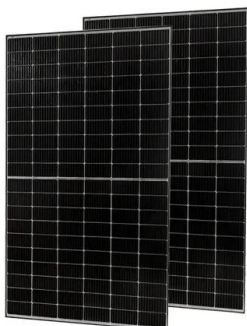


### Managing the risks of roof-mounted solar panel systems

If you are planning to install solar panels on the roof of your community building, it is important that you understand the risks involved. In the event that a solar panel fire happens, it will make ...

### Solar Panel Roof Requirements For Installation (2023 Guide)

Solar panels are now an option for most homes. According to the Solar Energy Industries Association, more than 2 million PV installs are in the USA. The rapid growth is due ...



### Legal and Planning Permissions Associated with a Solar Panel ...

2 ???· If solar panels are being installed on a flat roof, they must be at least 1 meter from the edge of the roof and must not protrude more than 1 meter from the roof's surface. If the ...



**Turn the following sentences into the Passive : 1 . They will install**

turn the following sentences into the passive1.  
they will install solar panels on the roof of our house next week2. will the plumber check cracks on the water pipes in two days 3. they wont ...



**The Importance of Solar Panel Safety: Understanding and ...**

Maximize solar panel safety. Learn about risks and how to prevent them. Essential tips, techniques, and guidelines for a safe installation. We will also provide ...

[Industry best practice manual 2.0](#)

PDF-1.7 %µµµµ 1 0 obj >/Metadata 2020 0 R/ViewerPreferences 2021 0 R>> endobj 2 0 obj > endobj 3 0 obj >/ExtGState >/XObject >/ProcSet[/PDF/Text/ImageB/ImageC



**(PDF) Effects of dust on the performance of solar panels - a review**

the PV panels is also studied by considering the height of the roof as one of the factors. The dust particle size was noted at 20 u mt o8 0 u m for a roof height of 10 metres, as ...



### Can Solar Panels Be Installed on a Flat Roof in the UK?

Always check with a qualified solar PV installer that your roof is suitable for solar panels. More roof space required . Solar panel systems on a flat roof take up more space. The ...



### Transforming Your House: The Power of Solar Panels on the Side

Harnessing Solar Power. Solar energy has emerged as a powerful and sustainable source of renewable energy. With the help of solar panels, homeowners can tap ...

### Can Solar Panels Be Installed on a Slate Roof?

Yes, solar panels on a slate roof take more time to install. Your MCS certified installer will need about five days to install the complete solar PV system, while most standard roofs take just one or two days. More time means higher costs, ...



### Why your roof might not be suitable for solar panels

Roof obstacles such as dormer windows do pose a problem, but it's possible for multiple systems to be used across a roof to suit layouts as required. Installers can be flexible to meet your needs - on various occasions ...



## Advantages and disadvantages of a photovoltaic plant

The side panels of a photovoltaic power plant are designed to collect large amounts of electricity. Once a photovoltaic cell is built, sunlight hits the solar cell. Concentrated solar thermal ...



### Solar Panel Fixing Options

An in-roof solar panel system sits on top of the roofs battens and is then tiled or slated around. Using solar tiles is a popular option when installing solar power on prestigious developments ...

## Can Solar Panels Be Installed on a Slate Roof?

1. Remove the tiles. On a slate roof, hammering flashing and brackets would ruin or crack the tiles. So, your installer will take out the required tiles carefully, with a hammer, a slate ripper, and maybe tin snips.



### Fixing solar panels to membrane roofs

Ways to fix Solar PV to the roof structure. So now we have looked at the roof structure and the roof coverings we can look at the different ways of mounting solar on the roof. Obviously, ...



### Dualsun SPRING: the leading hybrid solar (PVT) panel

A 2-in-1 innovation A combination of photovoltaic and thermal solar energy that produces at least 2 times more energy than a conventional photovoltaic panel.; Made in France label SPRING ...



### Will Solar Panels Damage Your Roof? A Homeowner's Guide to Safe

Homes in areas with frequent storms benefit from having an additional layer of protection on the roof. Thermal Regulation: By shading the roof, solar panels help regulate ...

### Green roof and photovoltaic panel integration: Effects on plant ...

The combination of green roofs with photovoltaic (PV) panels has been proposed to provide synergistic benefits as the panel is cooled by the presence of the vegetation, and ...



### Can You Put Solar Panels On A Conservatory Roof?

Optimal Roof Orientation: A conservatory roof facing south with a tilt angle of 30-40 degrees is ideal for maximising solar energy absorption. Shade Management: It's vital to assess the surrounding environment for ...



### How to Install Solar Panels on a Roof: A Step-by-Step ...

Here is a stepwise description of how to install solar panels on the roof: Step 1: Identify the Roof Space Ensure Accurate and Safe Installation. Solar panel installations must be meticulously performed under the ...



### Solar Panels on a Garage Roof in the UK: A 2023 Guide

The costs to install solar panels on a garage roof can vary based on several factors, including the number of panels, the type of panels, the complexity of the installation, and the location of your ...

### Concentrated solar power (csp): What you need to know

Concentrated solar power (also known as concentrating solar power or concentrating solar-thermal power) works in a similar way conceptually. CSP technology produces electricity by concentrating and harnessing solar ...



### [Can You Put Solar Panels on a Flat Roof?](#)

In most cases, you do not need planning permission to install solar panels on a flat roof. Most UK residential solar panel installations come under 'permitted development', which means they do not require specific ...



### Solar thermal vs solar PV panels: Which is the best option

At 2022 prices, a 250 watt solar panel costs between £400 and £500, although this varies depending on the type of PV panel and size of the solar PV panel system. The most ...



### Solar PV: Safety and The Building Regulations

The installer is also faced with the dangers of handling potentially large and heavy equipment at height as well as ensuring that the installation of a solar PV system does not have a negative impact on the strength and integrity of the buildings ...

### Can You Put Solar Panels on a Flat Roof?

Standard solar PV panels that you would install on a sloped roof can also be installed on flat roofs. Pros and Cons of Solar Panel Flat Roof Installations. including monocrystalline, polycrystalline silicon cells and thin ...



### Solar Thermal vs Photovoltaic Solar: What is the Difference?

The solar thermal system differs from solar photovoltaic in that the solar thermal power generation works through the concentration of sunlight to produce heat. The heat, in ...



## Contact Us

---

For catalog requests, pricing, or partnerships, please visit:  
<https://vdbconstruction.co.za>