

# Leveling method of photovoltaic panels in color steel shed





## Overview

---

How do solar panels for sheds work?

Here's how it works. Solar panels for sheds are a greener way to provide power to an outbuilding, without the often costly and disruptive process of channelling cables under the ground. Alternatively, they can potentially provide a home with solar generation if the main roof is unsuitable for installation.

How can solar power transform a shed?

Solar energy not only offers an eco-friendly power source but also transforms sheds into fully functional workspaces, studios, or retreats. In this guide, we'll outline the essential steps, from sizing your solar panels to the installation process, ensuring you harness the sun's power efficiently.

Which solar panels are best for a shed roof?

When it comes to solar panels, there's a variety to choose from:

**Monocrystalline:** Monocrystalline panels, such as the ones found in our Rich Solar 1600W Complete Solar Kit, are highly efficient and great for smaller spaces, making them perfect for shed roofs. **Polycrystalline:** A cheaper option, but with less efficiency.

Are solar panels for sheds a viable alternative?

Solar panels are a viable alternative as it means getting power directly from the shed's current position and running that inside. Therefore using solar power for sheds means fewer cables, less destruction and cheaper longer term running costs. This guide will share all you need to know about solar panels for sheds.

Can you add solar panels to a shed?

Adding solar panels which power the shed, is a different matter, however. They are generally smaller and often produce less power. If you will only be



using the power to light a shed or outbuilding, they can be a good option, but for heavy-duty power tools or anything that requires substantial electricity, a grid system might be best.

Can a small shed benefit from a solar PV system?

A small shed that's used for storing tools and general pottering may benefit from a DIY solar PV system, such as those used for camping or caravans. Although not as robust, and without as much oomph, they can be a lot less expensive and do not need formal installation, as they are not connected back to the grid.



## Leveling method of photovoltaic panels in color steel shed

---

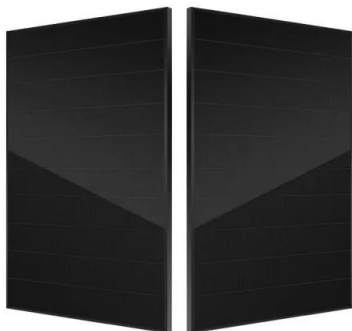


### Metal Shed

12x6 Ft Pent Metal Color Shed. For metal sheds, a level concrete slab is the best option. Check that it's level and free from faults. Construct and affix the base frame. The best metal sheds ...

### A photovoltaic surface defect detection method for building ...

As shown in Fig. 4, we selected 1550 panel cracks and spot images from the dataset to conduct this experiment; thus, the overall defect dataset consisted of 1550 specific ...



### Design and Analysis of Steel Support Structures Used ...

In the photovoltaic (PV) solar power plant projects, PV solar panel (SP) support structure is one of the main elements and limited numerical studies exist on PVSP ground mounting steel frames to

### Solar panels for sheds: The essential guide to your FAQs

For an application to supply green energy to a home, we are not talking about small sheds though -- the average 16Amp installation would require around nine solar PV ...



### Perspectives and review of photovoltaic-thermal panels in net ...

This forward-looking perspective article presents a status overview of solar photovoltaic-thermal (PVT) panels in net-zero energy buildings from various points of view and ...



### [Solar Panel Fixing Options](#)

Solar Panel Fixing Options. There are many different options to suit all different situations for fixing solar panels to buildings. We have built this page for solar panel fixing options to help ...



### Steel sheds for photovoltaic panels / Carports

Steel sheds for photovoltaic panels / Carports. We will design and manufacture Carports. Carports have become our flagship product. We are able to carry out the design of both standard 1 and ...





## Solar panel structures, solar carports, solar field

All the profiles used in our solar panel structure systems are made of S350-GD galvanized structural steel (from Zn 450 up to ZnMg 310 gr/m<sup>2</sup>), corrosion resistant, have a very low ...



## Steel Solar Panel Structures , Nucor Buildings Group

Solar panel systems are an efficient use of space, bringing shade and clean energy to your building or parking lot. Over 100 million metric tons of carbon emissions are reduced yearly, ...

## How to Mount Solar Panels - The Methods Naked ...

Many commercial buildings have metal trapezoidal roof structures. Here the rails are secured to the ridges of a metal roof using self-tapping screws. The base of the rails has a waterproof membrane to ensure a secure weather seal. The ...



## [Analyzing Metal Buildings for Solar Panels](#)

Increasingly, contractors and solar installers are being asked to install solar panels on existing metal buildings. Building owners are aware of the cost benefits of a switch ...



## Assessing the combined effect of PV panels' shading and

PV panels are vastly used for sustainable electricity generation, while they can also help the environment by improving buildings' energy consumption. The best placement ...



## [Solar Panels for Sheds: What You Need to Know](#)

Metal Garden Storage; although you need to make sure whichever method you use provides enough electricity for your needs (more about this later). (5W) and a desk ...

## Metal Building Colors: How To Choose The Right Ones

Can you change the color of a metal building? You can change the color of a metal building in a few ways: paint it, use powder coating, apply vinyl wraps, or replace the ...



## A structure adapted to the installation of photovoltaic panels?

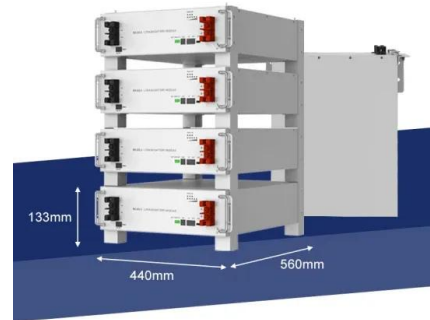
Start producing clean energy by installing photovoltaic panels on your building! Our steel shed structures adapt for this use case! Today, renewable energies are at the heart of the debates.





Can I put solar panels on my shed roof?

Roof orientation. Whether you opt for a solar PV system or a DIY kit, the best place to position your shed to get optimum sunlight is south facing. It should be pitched at ...



**Integrated thinking for photovoltaics in buildings**

The opaque panels, prepared at CSEM, based on c-Si, incorporate different filters (fibreglass, and different metal meshes) offering a variety of textures, colours and reflections ...



**37 BEST Tips How To Add A Lean To Onto A Metal Shed (Easy)**

Attach metal shed brackets or connectors to secure the structure to the existing metal shed. Use a level to ensure everything is plumb and square. Choose a color that complements your ...



**Home Energy Storage (Stackble system)**



- High Efficiency
- Easy installation
- Safe and Reliable
- Perfect Compatibility

- Product Introduction**
- Scalable from 10 kWh to 50 kWh
  - Self-Consumption Optimization
  - Integrated with inverter to avoid the compatibility problem
  - LFP battery, safest and long cycle life
  - Stackable design, effortless installation
  - Capacity of high-powered
  - Emergency-Backup and Off-Grid Function

**Solar Panels on Metal Roof (Advantages + Disadvantages)**

The average cost to install a solar panel system on a metal roof is \$19,000. Considering how durable and long-lasting they are with minimal maintenance, this makes ...



## Solar Panels for Sheds , Costs & Benefits (2024) , Eco Experts

The more solar panels you install, the more expensive it will be. The make, model, and type of solar panel will also affect the cost. Benefits of solar panels on a shed. ...



### Solar panels for sheds - everything you need to know

Panel size is varied, but how many solar panels for sheds are needed is vital to know, too. For basic needs, like lights and charging smaller devices, a 50W panel setup can be enough. But if you're going bigger - by ...

### Installing Solar Panels

Solar panels, also know as photovoltaic (PV) systems, convert sunshine directly into electricity. The following guidance is intended to help property owners and those involved in managing, maintaining, or making ...



### Design and Analysis of Steel Support Structures Used in Photovoltaic ...

The construction of solar energy systems, mainly steel materials have a favorable custom in structural engineering applications, but the aluminum alloy is increasingly being used due



### (PDF) Recent advances in passive cooling methods for photovoltaic

PV panel, insulation material, and six copper pipes welded on the rear side of the PV module. The use of a transparent TPT layer shows promising effects for its high thermal e ...



CE UN38.3 (MSDS)



### A Guide to Metal Roof Solar Installation , Greentech Renewables

This metal roof type is considered more economical but less aesthetically pleasing and is universal across agricultural and industrial buildings. Corrugated metal roofing is another ...

### Best Solar Shed Lights for 2024

This is the level of customization needed for darker settings where the light goes quickly. Dual Color Output. Features to Look for in Solar Shed Lights Design. The solar panel design in ...



### Photovoltaic Basics (Part 1): Know Your PV Panels for ...

Waste from the processing of electronic components can be used in photovoltaic panels, since a lower level of purity is required for silicon. The first solar panels (the "first generation" ones) were the so-called ...



### Structural Requirements for Solar Panels -- Exactus Energy

The solar panel mounting structure is usually made of mild steel or aluminum, which adds minimal weight but provides adequate support to the panels 1. The design of the ...



### Solar panels for sheds: The essential guide to your ...

Adding solar panels which power the shed, is a different matter, however. They are generally smaller and often produce less power. If you will only be using the power to light a shed or outbuilding, they can be a good ...

### Color Steel Tile Roof Solar Panel Installation System, ...

Color Steel Tile Roof Solar Panel Installation System, Photovoltaic Roof Solar Installation Support, Color Steel Tile Component type and installation method: Bracket Features: Firstly, All raw materials were selected are the highest ...



### [How to Set Up Solar Panels for Shed](#)

In this guide, we'll outline the essential steps, from sizing your solar panels to the installation process, ensuring you harness the sun's power efficiently. We'll also explore the types of solar panels suited for sheds, the ...



## Review of cooling techniques used to enhance the efficiency of

Photovoltaic (PV) panels are one of the most important solar energy sources used to convert the sun's radiation falling on them into electrical power directly. Many factors ...



### [How to Install Solar Panels on a Shed](#)

The answer is a resounding yes! In fact, metal roofs, including those made of steel, offer an ideal surface for mounting a solar panel system. Metal panels, often used as roofing material, typically have a lower pitch, ...



## Contact Us

---

For catalog requests, pricing, or partnerships, please visit:  
<https://vdbconstruction.co.za>