

# **Lithium battery 5000 btu air conditioner**

**ESS**





## Overview

---

To run a 5000 BTU air conditioning unit, a good starting point is 600 watts of solar power (preferably tilttable), a 40 amp MPPT charge controller, a 2000 watt pure sine wave inverter, and 400 amp hours of lithium ion batteries or 800 amp hours of lead acid batteries. That setup will run the A/C for about eight hours. How many watts a day does a 5000 BTU AC use?

For example, consider a 5000 BTU air conditioner that runs for 8 hours a day, and that consumes 2400 Watt-hours on average. Assuming we'll be using Lithium batteries to run this AC unit, we can calculate the capacity of the battery bank (at 12 Volts) as such:.

How many BTUs does a 5000 BTU air conditioner produce?

A 5,000 BTU air conditioner generates 5,000 cooling BTUs per hour. This cooling capacity might seem low, but it is enough to cool small areas measuring 150 square feet. You can use such a unit to cool an office, closet, kitchen, or small bedroom.

Do 5000 BTU air conditioners come with installation kits?

Some 5,000 BTU air conditioners come complete with their installation kits; others do not. The installation kit in window ACs consists of the mounting brackets and frame, while in portable ones, it is the window kit for venting. Your priority should be an AC that comes with all the installation components.

How quiet is a 5000 BTU AC?

Because of their lower cooling capacity, the 5,000 BTU ACs tend to be quiet. They produce about 48 to 52 decibels of noise on average. Does a 5,000 BTU air conditioner use a lot of electricity?

The 5,000 BTU ACs consume less energy than their bigger counterparts.

What is a 5000 BTU cooling unit?



5,000 BTU units are the smallest units on the market. You can find them in both portable and permanent variations. The portable models are good when you want a mobile solution to keep you cool all around the house. While the permanent, window or wall-mounted units are more suitable for cooling an office or a particularly hot area of your house.

Is a 5000 BTU air conditioner enough for a living room?

Since most living rooms measure around 340 square feet, a 5,000 BTU air conditioner is not enough for a living room. Is 5,000 BTU air conditioner the smallest?

Among the traditional AC range, 5,000 BTU units are the smallest. But you can also find personal AC models with lower cooling output and coverage area.



## Lithium battery 5000 btu air conditioner

---



### Lithium (LiFePO4) Battery Runtime Calculator - Dot ...

Lithium batteries can be discharged at 1C (for example, 100 amps for a 100Ah battery). Discharging your battery at a higher rate than what is recommended will increase the heat in battery cells. As a result, your battery ...

### Can Air Conditioner Run On Inverter?

However, the length of time that an inverter can keep an air conditioner running will vary depending on the size of the unit and the capacity of the inverter. For example, a small 5000 BTU air conditioner might only require around 700 watts to operate.



### How many solar panels do I need to run my RV AC?

Devices like the Kill-A-Watt meter can help you monitor the power usage and the energy consumption of your air conditioner. Click here for more information about this topic. How much sunlight will your solar panels receive? In general, sunlight is measured in  $W/m^2$  (Watts per square meter), and solar panels need exactly  $1000 W/m^2$  ( $1 kW/m^2$ ) of sunlight to ...

### 10 Best Air Conditioners for Small RVs Like Truck Campers and ...

Several pop-up truck camper companies offer a 5,000 BTU wall mounted air conditioner, though some, like our friends at KingStar, offer this



excellent 8,000 BTU model by Amana instead. Aside from the low weight, the big benefit of going with the Amana 8000 is the price, it sells for only \$270, a bargain compared to typical RV rooftop models.

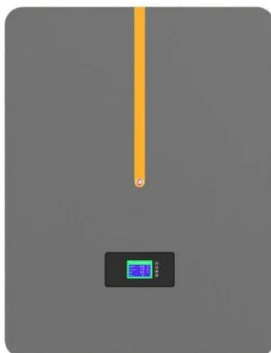


### How many 12 volt batteries to run an air conditioner?

For example, consider a 5000 BTU air conditioner that runs for 8 hours a day, and that consumes 2400 Watt-hours on average. Assuming we'll be using Lithium batteries to run this AC unit, we can calculate the capacity of the ...

### How long can you run RV Air conditioner on lithium battery power?

How long can lithium batteries run a standard RV air conditioner? There are many variables in this question but on average, the rule of thumb is you can run



### [How Many Batteries To Run RV AC?](#)

The average RV air conditioner is rated at 13500 or 15000 BTUs, air conditioners of this size consume between 1300 and 1600 Watts when running. On average, to run an RV air conditioner, you would need anywhere from 90 to 130 Ah (amp-hours) of battery capacity (@ 12V) for every hour of use.



### 4 Best Battery Powered AC Units , Reviews + Guide

The ACDC battery-powered air conditioner is one of the best AC on the market. With 6,000 BTU of cooling power and a reverse-cycle heat pump, this device can keep you cool even on the hottest summer days. The air ...

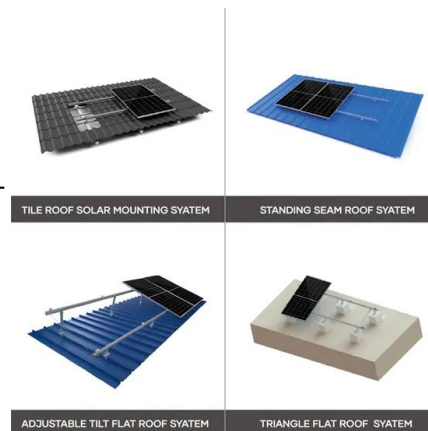


### Daewoo

Shop Daewoo 5,000 BTU Window Air Conditioner White at Best Buy. Find low everyday prices and buy online for delivery or in-store pick-up. Price Match Guarantee. I purchased this air conditioner specifically because Best Buy stated that this was energy efficient

### 12V Air Conditioners: Battery Powered for Off-The-Grid Vanlife

12V "battery powered" air conditioners for off-the-grid usage are starting to hit the market. Manufacturers like Nomadic Cooling Co. and Dometic claim those 12V A/C units can be 70% more efficient than traditional 120V A/C rooftop units and are, therefore, suited for vanlife. and are, therefore, suited for vanlife.



### How Many Solar Panels Does It Take To Run a 5000 BTU Air Conditioner

A 5000 BTU air conditioner can remove 5000 BTUs of heat energy per hour. Estimating Power Consumption For 8 hours of cooling per day, you would typically need around 400-500 amp-hours of lithium battery capacity for a 5000 BTU AC unit. The exact



### How Many Solar Panels To Run a 5000 BTU AC?

600 watts of solar power can run a 5000 BTU/450wh air conditioner for 7-8 hours a day. To complete the system you will also need 4 x 100ah 12V batteries, a 30A MPPT charge controller and a 1500W pure sine wave inverter.



### **7 Best 5,000 BTU Air Conditioners For Rooms Up To ...**

1. Best Overall: MIDEA Easy-Cool.
2. Runner-Up: FRIGIDAIRE FFRA051ZA1 17" Window Air Conditioner.
3. Quietest Unit: AMANA 5,000 BTU Window-Mounted Air Conditioner.
4. Most Energy Efficient: KEYSTONE LCD ...

### **Can I Run My RV Air Conditioner on Battery Power?**

If you had three 100 AH (amp hour) Lithium Phosphate batteries, along with a 7,000 watt power inverter, you could run two 15,000 BTU air conditioning units for about 1 hour. But that will also require you to have about ...



### **How Long Will A Jackery 2000 Run A 5000 BTU Air Conditioner?**

The answer to this question is not straightforward because it depends on several factors, including the size of the battery, the condition of the battery, and the efficiency of the air conditioner. However, we can make some estimates based on the specifications of Jackery 2000 and a typical 5000 BTU air conditioner.



### Top-Rated 12V Air Conditioner Options for Van Life

For example, a 100 Ah lithium battery can power a 15,000 BTU RV unit for 30 minutes. However, a bank of 8 batteries would power the same unit for 4 hours. A smaller 12 volt air conditioner (for example, something around 5000-6000 BTU) can run anywhere from



### 5000 BTU AC Off Batteries And Solar

To run a 5000 BTU air conditioning unit, a good starting point is 600 watts of solar power (preferably tiltable), a 40 amp MPPT charge controller, a 2000 watt pure sine wave ...

### r/VanLife on Reddit: Is a 24/7 air conditioner feasible?

I use a 5000 BTU air condition and it is effective. I have a 600AH lithium battery, 400W solar, 3000VA Victron inverter, 30A (rated) Victron battery to battery charger. I can run my air conditioner off the batteries for about 14 hours under the hottest conditions. After



### Can A Solar Generator/Power Station Run An Air Conditioner?

They've become increasingly popular as large lithium batteries have become more accessible. It's a 4000 BTU AC, so it isn't very powerful compared to a 13,500 or 15,000 BTU RV air conditioner, but it can cool down a bedroom or an office at least. If you



## The 11 Best Air Conditioners for a Campervan of 2024 ...

In some forums, van lifers recommend having at least 500-600 amp hours of lithium batteries to run the Dometic RTX 2000 12-volt air conditioner, plus at least 300 watts of solar. Having a DC to DC charger also ...

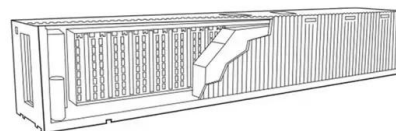


## How Many 12 Volt Batteries Do You Need to Run an Air Conditioner?

A car battery can be used to power a 5000 BTU air conditioner, but it is important to note that a car battery is not designed for this purpose and may not last as long as a deep cycle battery. Assuming the car battery has a capacity of around 60 amp hours, and the 5000 BTU air conditioner draws around 5 amps while running, you can expect to get around 12 hours of use ...

## How Many Batteries Does it Take to Run an Air ...

Four 12 volt batteries is the very minimum needed to run a rooftop RV air conditioner. But then, that will only run an air conditioner for about 1 hour maximum. Of course, it depends upon the type of battery. Flooded cell ...



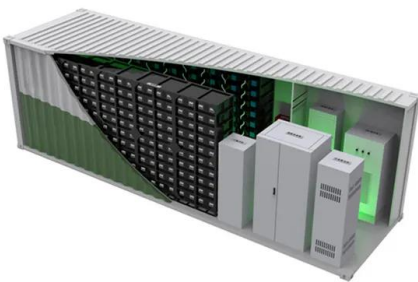
## How Many Solar Panels Does It Take To Run a 5000 ...

How many batteries would a 5000 BTU AC need? For 8 hours of cooling per day, you would typically need around 400-500 amp-hours of lithium battery capacity for a 5000 BTU AC unit. The exact amount depends on the ...



## Can You Run Your RV AC While Boondocking? - Practical RV

A common lithium battery can provide 100 amp hours, so if you had five of them linked together your system would have a capacity of 500 amp hours. To determine how fast a 15,000 BTU air conditioner will drain a 12 volt lithium battery system, the following

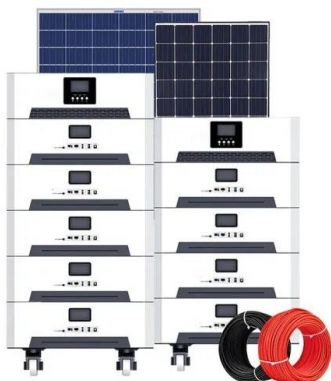


## How Many 12 Volt Batteries Does It Take to Run an Air Conditioner

How Many Batteries Do I Need to Run a 5000 BTU Air Conditioner? You'll need about 765 watts to run a 5000 BTU air conditioner. That's about 3 amps at 240 or 6 amps at 120 volts. So you'll need at least two batteries, possibly more, depending on how much

## Maplin Plus 5000 BTU 4-In-1 Portable Air Conditioner

The summer heat can be unpredictable, which is why you need a multi-functional air con unit to match. Bring in this Maplin Plus 5000 BTU 4-In-1 Portable Air Conditioner which does four jobs. It cools, ventilates, dehumidifies and also has a sleep mode. 'Cool' keeps the area at a constant temperature, 'ventilate' contro



## [4 Best Skoolie Air Conditioning Options](#)

We installed a 5,000 BTU air conditioner that pulls around 500 watts @ 120V, so it is about 1/3 the power draw of an 11,000 BTU rooftop air conditioner. Skoolie Window AC on Shore Power Like roof-top air conditioners, these are very convenient for running on a shore power hookup without much issue.



### 7 Best 5000 BTU Air Conditioners for Rooms Below 150 Sq Ft

Whenever I have to recommend a 5000 BTU air conditioner, I mention the Frigidaire FFRA051WAE first. There's very little not to like about this small window AC unit -- it's affordable, dependable, and powerful for its size. For a 5000 BTU air conditioner, the to it.



### 200ah LiFePo4 battery runs an AC for how long? With ...

It turns out during the heat of the day, the 5000btu GE air conditioner I used pulled 500 watts total from the battery. This is including efficiency losses in the inverter itself. Long story short, it took 5 hours for the ...



### Zero Breeze Mark 2 Review (2021): Tesla Of Portable AC Units

If you don't have central air, if a window AC won't work in your situation, and if a ductless mini-split or heat pump system would be too complex or costly for you, a portable air ...



#### OEM service

Hot Colors:



Color can be customized  
more questions just do not hesitate to contact us

LOGO Position: (Screen printing)



### How many solar panels to run air conditioner?

For example, if our air conditioner consumes 5000 Wh per day, and we use lithium batteries (80% DOD) to run it, the required battery capacity to run our air conditioner is: Required Battery Capacity (Watt-hours) = Air ...



## Running 8000 BTU Air Conditioner with a 12v 100ah LifePO4 Battery!

I really wanted to see if I could possibly run an 8000 BTU air conditioner with a 12v battery. I looked up the info on the AC unit and found out it is possi I really wanted to see if I could



## Contact Us

---

For catalog requests, pricing, or partnerships, please visit:  
<https://vdbconstruction.co.za>